

Inside This Issue

Car Pool Cost Sharing	1
Volunteers	3
Board Notes	4
Conservation Corner	5
Janet's Jottings	5
Trip Reports & Activities	6-10
Upcoming	10
Upcoming Extended Trips	11
John Craig Race Invitation	12
Barb's Sampler	13
At the Lodge	14
Classifieds	15
Calendar	15
Picture of the Month	16

Dates to Remember

Feb 17	Recycling- SciEd Tuesday
Feb 22	Bus Rally at Lodge
Feb 27	Stove Team - Potluck
Feb 28	March Bulletin Deadline
March 4	Board Meeting

Complete current schedules at:
www.obsidians.org or
 Register-Guard – Outdoors – Tuesday

**Byways-By-Bus
Schedule 2009**

See Insert
 Online viewers: Access at the
 Obsidian website.

**2009 Membership
Directory**

See Insert & Info Page 2
 Online viewers: Access in the
 member's only area of the
 Obsidian website.

Mileage Math:

*A Quick Course in
Car Pool Cost Sharing*

By Marshall Jay Kandell



We have always relied on willing drivers, with riders sharing the costs.

WHEN GAS PRICES SOARED, we raised our recommended car pool cost sharing rate to nine cents per mile. So, now that gas prices are down, we'll reduce our rate...right? Uh, well, no.

As any automobile owner will attest, there's more expense involved in driving a car than just the gas. There's wear and tear (on both the car *and* the driver), plus more frequent servicing and repairs. For years Obsidians have discussed appropriate voluntary cost sharing with drivers to compensate them for their generosity. Without drivers, our trips don't even get started.

With gas prices on their recent roller coaster ride, the board of directors decided this was as good a time as any to try and come up with some sort of formula that would consistently guide the club without having new motions voted on each time OPEC, speculators, oil companies or world events goose the gas rates. Outgoing club president Brian Hamilton chaired a committee that proposed just that sort of formula at the January board meeting.

Common Cents

Before getting into the math part of the proposed equation, it should be noted that there was a considerable amount of discussion over the past few months and several surveys of what similar organizations around the west charged. Several were in the same 9 or 10 cent range as we are, but most were up around the 15 cents per mile mark. A few were linked in some way or other to the Internal Revenue Service's cost per mile rate. And that's where Brian's group also found agreement.

The IRS rates for 2009 are 55 cents per mile for business; 24 cents per mile for medical or moving purposes; and 14 cents per mile driven in service of charitable organizations. Taking the 55 cents per mile guideline (which is down from 58.5 in 2008), Brian's committee chopped off about a third of last year's figure to account

(Continued on page 2)

Car Pool Cost Sharing

(Continued from page 1)

for those standard ongoing costs of ownership that have no relationship to our considerations (license, insurance, etc.). That brought it to about 37 cents per mile...or about 9 cents per mile each for driver and passengers, figuring four people per car.

No Change, for Now

Considering the state of the economy and how close these amounts were to our current recommended car pool sharing rate, it was generally agreed by the board that this would not be a good time to impose an increase. The board did like having a formula, however, and will be considering a proposed bylaws addition at the March meeting that will include annual rate reviews using the IRS rate as a benchmark (see *Bylaw proposal below*). It will still be up to board members to decide whether to change the recommended rate or not; but, for once, they will have a solid guideline on which to base their decisions.

For the first time, a surcharge of \$2.00 per trip has also already been instituted for snow shoe or ski trips. While a reluctance to drive under winter conditions is understandable, the shortage of drivers willing to offer their cars and services has been posing a real problem in the past couple of years, with some trips getting canceled and some who signed up being told they couldn't go because of lack of transportation. \$2.00 more per passenger may not attract that many drivers, but it is a token of appreciation to those who serve during the winter driving season.

It is important to remember that although car pool cost sharing is strongly encouraged, it is voluntary and the suggested mileage rate is just that, a suggestion. There will always be some inequities. As is usually the case, the recommended changes won't please everyone. The board welcomes your feedback and suggestions.

For those who never drive and resent having to share car pooling expenses, remember all this math adds up to the following bottom line:

No drivers = no trips

Proposed Carpool Bylaw Change

Section 5-- Carpool Expense Sharing

- 1) In consideration for members who volunteer to drive their cars on Obsidian trips, sharing of driving expenses (gas, wear and tear, etc.) among all riders is encouraged. Sharing of all driving expenses is voluntary.
- 2) The recommended driving cost per mile to be shared by drivers and riders is based on two thirds (2/3) of the Internal Revenue Service's mileage rate, divided by 4 (average riders per car); i.e., one-sixth (1/6) of the IRS rate per person.
- 3) Each December, the Board of Directors will review IRS and Obsidian trip mileage rates, consider adjustment of the recommended club rates in accordance with the above formula and announce any changes to the members.
- 4) It is recommended that an additional \$2.00 per trip be assessed to each rider on snowshoe and skip trips.

Membership Directory Changes

WITH THE ADVENT of various new awards being available in the last few years, the space required to list all of them for individuals in the 2009 Membership Directory became prohibitive. So therefore we now only list the membership status for each member. These include Active, Associate, Junior, Life and Honorary Members. We are sorry we ran out of room to include other interesting and deserved awards and honors.

OBSIDIANS, INC

P.O. Box 322, Eugene, OR 97440

Website: www.obsidians.org

Board of Directors

President - Jim Duncan
 Vice President - Jim Pierce
 Secretary - Laurie Funkhouser
 Treasurer - Stewart Hoeg
 Wayne Deeter Larry Huff
 Marshall Kandell Verna Kocken
 Barb Revere

Board meetings are held at 6 p.m. on the first Wednesday of each month, except August, at the Obsidian lodge.

Committee Chairpersons

Byways-By-Bus.....Liz Reanier
 Climbs Larry Huff
 Concessions Kathleen Floyd
 Conservation..... Pat Bitner
 Entertainment Laurie Funkhouser
 Extended Trips..... Jim Duncan
 FinanceStewart Hoeg
 Lodge Building Doug Nelson
 Lodge GroundsJohn Jacobsen
 Librarian/HistorianLenore McManigal
 MembershipBarb Revere
 OnlineWayne Deeter
 PublicationsBarb Revere
 Publicity.....Elle Weaver
 Safety.....Sue Sullivan
 Science & Education.....Joella Ewing
 Summer Camp Lana Lindstrom
 Summer TripsJim Pierce
 Trail Maintenance.....Peter Green
 Winter Trips.....Paul Flashenberg
 Youth.....

The **OBSIDIAN** *Bulletin*

© 2009

Published monthly, except August. Articles, story ideas, letters to the editor and other editorial submissions may be emailed to:

bulletin@obsidians.org

Although email is preferred, submissions may also be sent to:

The Obsidian Bulletin

P.O. Box 51424, Eugene, OR 97405

For reprint rights, contact above.

Deadline

for March 2009 Bulletin

Saturday, February 28, 2009

Assembly/Mailing Team

For January Bulletin

Assembly & Mail Manager Lou Maenz
 Call Manager Vera Woolley
 Assembly Team ... Yuan Hopkins, John & Lenore McManigal, Margaret Prentice and Barb Revere

Editorial Team

Writing & Editorial Staff Jean Coberly, Bea Fontana, Janet & John Jacobsen, Joanne Ledet, Barb Revere, Beth Roy
 Copy Editors.... Jean Coberly & Beth Roy
 Graphics, Design & Desktop Publishing Stewart Hoeg & John Jacobsen

**By Ways By Bus
Liz Reanier, Chair**

Ethel Allen, Ewart Baldwin
Barbara and Paul Beard
Pat Bitner, Mary Lee Cheadle
Sharon Cutsforth
Dennis and Barbara Flanders
Bette Hack, Ray Jensen
Ben and Pat Jeffries
Rosella Jones, Verna Kocken
Lenore McManigal
Barbara and Don Payne
Janet Speelman
Mary Ellen West, Vera Woolley

Climbs

Larry Huff, Chair

George Baitinger,
Wayne Deeter, Steve Kuhn
Doug Nelson, John Pegg
Sue Sullivan

Concessions

Kathleen Floyd, Chair

Sharon Duncan

Conservation

Pat Bitner, Chair

Margot Fetz, Judy Newman

Entertainment

Laurie Funkhouser, Chair

Stephen Brander, Denise Butler
Linda Danielson
Carol Fairbanks, Kathy Hoeg
Yuan Hopkins, Sam Houston
Scott Hovis, George Jeffcott
Darlene Mancuso
Patrice McCaffrey
Mary Morrison
Tom Musselwhite
Chuck Wagar, Susan Wanser
Sue Wolling

Extended Trips

Jim Duncan, Chair

Lana Lindstrom, Jim Pierce

Finance

Stewart Hoeg, Chair

Dan Christensen, Jean Coberly
John Jacobsen, Lana Lindstrom
Liz Reanier

**Librarian/Historian
Lenore McManigal, Chair**

**Lodge Building
Doug Nelson, Chair**

Brad Bennett, Sue Carey
Jim Dotson, Brian Hamilton
Larry Huff, Juli McGlinsky
John and Lenore McManigal
Pat Soussan, John Pegg

Membership

Barb Revere, Chair

Margaret Prentice, Helen Martz
Moshe Rapaport, Shirley Froyd
Janet Jacobsen, Julia Richardson



President's Message:

**LOOKING FOR A FEW(?)
GOOD VOLUNTEERS**

THE OBSIDIANS, like any other volunteer organization, is only as good as its members are willing to make it. We've really been fortunate during the years I've been in the club to have had a group of highly active individuals willing to take on responsibility and donate time and effort to make sure we continue to thrive and grow. It's necessary and important that we continue to replenish this dedicated pool of committed members who do so much to keep the club humming along. Important, I think, because it's essential for any organization to have a fresh influx of new people and new ideas, to stir things up, to try something different. It keeps our club young and vibrant (despite its advanced age!).

This year, the *Bulletin* will be featuring photographs and brief articles about the chairs of many of the Obsidians committees. We want to recognize those individuals who have been willing to step up and take responsibility for overseeing the important activities of the club.

Although we have over 150 members (count them in the banners left and right) now serving on committees, we're always on the lookout for more help, especially from members who might be willing to get more involved and who might, in the future, be willing to take on more responsibility. The work involved in making the club go is not really work – it's mostly fun. It's a great chance to meet new people, make new friends, and provides the satisfaction that comes from taking part in a group effort to do what needs to be done for the club.

Join us! Not sure? Maybe you should try some of Garrison Keeler's Powder Milk Biscuits – "Heavens, they're tasty and expeditious and give shy persons the strength to get up and do what needs to be done."

We need your help. Call me (343-8079), or any of our committee chairs, and we'll get you involved

- **Jim Duncan, Obsidian Board President**

Lodge Grounds

John Jacobsen, Chair

Pat Adams, Rick Ahrens
Brad Bennett, Max Brown
Jim Dotson, Jim Floyd
Brian Hamilton, Stewart Hoeg
Brenda Kameenui, Gary Kirk
Darlene Mancuso, Pat Soussan
Chuck Mitchell, Doug Nelson
Effie Neth, John Pegg
Jim Pierce, Dave Predeek

Online

Wayne Deeter, Chair

John Jacobsen

Publications

Barb Revere, Chair

Jean Coberly, Bea Fontana
Stewart Hoeg, Janet Jacobsen
John Jacobsen, Joanne Ledet
Lou Maenz, Beth Roy

Safety

Sue Sullivan, Chair

Wayne Deeter, Scott Hovis
Larry Huff, John Jacobsen
Verna Kocken, Lyndell Wilkin

Publicity

Elle Weaver, Chair

Marshall Kandell, Mary Hamilton
Janet Jacobsen, Martha Welches

**Science and Education
Joella Ewing, Chair**

Rich Ahrens, Tom Musselwhite

Summer Camp

Lana Lindstrom, Chair

Melody Clarkson, Wendy Dame
Don Doerr, Jim Duncan
Laurie Funkhouser, Scott Hovis
Jim Pierce, Nancy Whitfield

Summer Trips

Jim Pierce, Chair

Jennifer Barnes, Linda Danielson
Walt Dolliver, Kathleen Floyd
Mary Hamilton, Daphne James
Joanne Ledet, Norma Lockyear
Helen Martz, Valerie Metcalf
Effie Neth, Karla Rusow
Pat Soussan, Chris Stockdale
Judy Terry, Elle Weaver
Lyndell Wilken

Trail Maintenance

Peter Green, Chair

Matt Bell, Janet Jacobsen

Winter Trips

Paul Flashenberg, Chair

Daphne James, Jim Pierce
Chris Stockdale, Elle Weaver

Youth

This committee is currently inactive, but we hope to reinvigorate it soon.

BOARD NOTES

February 4, 2009

By Laurie Funkhouser, Secretary

President Jim Duncan called the meeting to order. Board members present: Laurie Funkhouser, Jim Pierce, Marshall Kandell, Barb Revere, Wayne Deeter, Larry Huff, and Stewart Hoeg. Others present: Paul Flashenberg, John & Janet Jacobsen, Joella Ewing, Lenore McManigal, Ed Lichtenstein, Liz Reanier, Elle Weaver, and Doug Nelson.

Treasurer's Report: Bills approved.

COMMITTEE REPORTS

Summer Trips (Jim Pierce): Committee met on January 22. There are several significant committee changes. The most important change is to recruit leaders several times during the season. We plan to use email to contact leaders... calling them as a last resort. Another change is to email the leader packets, not mail them. Packet documents will be available at the YMCA and we plan to have them all printable from the Website too.

Winter Trips (Paul Flashenberg): There are now 59 trips on the schedule

Climbs (Larry Huff): The dates for Climb School have been set. Will have registration and promotional info out by the third week in February. The Obsidian climb schedule is also being put together.

Trail Maintenance (Peter Green): Trail maintenance held January 14 and 24th. Our next outing will be February 28th.

By-Ways-By-Bus (Liz Reanier): The list of trips will be distributed in the Bulletin. A donation made this year in recognition of Ewert Baldwin.

Summer Camp (Lana Lindstrom): The registration form will be included in the March Bulletin. Summer Camp registration will open at the March 27 Rally/Potluck. Anne Marie Askew did a fabulous job drafting the Camp Booklet. We're still looking for Responsible People (lead folks).

Extended Trips (Jim Duncan): Schedule for 2009: Big Lake Winter Trip; March 11 - 13; Frenchglen - Malheur National Wildlife Refuge, May 8-10;

Columbia Gorge, May 27-29; North Cascades, August 19-23. The committee members for 2009: Jim Pierce, Lana Lindstrom, Jim Duncan.

Conservation (Pat Bitner): Preparations have been made for the February 2009 SciEd program to present Carolyn Stein of BRING Recycling as the speaker. An accompanying article on the importance of recycling has been submitted for the Feb. Bulletin.

Publications (Barb Revere): The Publications Committee expects to send the new 2009 Membership List (unofficially known as the Club Directory) out with the February Bulletin on Feb. 11. We plan (to remember) to email the board and committee heads about the Bulletin deadlines, approximately 1 week ahead of the deadlines each month.

Entertainment (Laurie Funkhouser): Bill Sullivan's presentation regarding *Oregon Natural Disasters* was frighteningly enjoyable: 54 attended the potluck; 63 attended the presentation and \$57 was collected. Next potluck is Friday, February 27, 2009 with Nancy Hughes informing the Club of volunteer opportunities with Stove Team.

Science and Education (Joella Ewing): Twenty-two people attended the January SciEd meeting, \$27 was collected. The Feb. 17 program on BRING recycling is co-sponsored by the Conservation Committee. All programs for 2009 have been scheduled except October, which is being negotiated.

Membership (Barb Revere): No new applications for Membership in Feb. We inactivated 32 members last month, for non-payment of dues. Had two representatives at Jan. potluck, to greet new people.

Publicity (Elle Weaver): The Publicity Committee working on the wording and design of a brochure to be used to highlight the Obsidians' activities.

Library/Historian (Lenore McManigal): All of the trip reports recorded.

Lodge Building (Doug Nelson): Lodge has been reserved for rental on Feb. 22. Building expenses: \$ 41.98.

Lodge Grounds (John Jacobsen): A grounds work party was held Monday January 19. Helping out were Pat Ad-

ams, Brenda Kameenui, Gary Kirk, Doug Nelson, Effie Neth, Jim Pierce.

OLD BUSINESS

Car-pooling Bylaw Language: Marshall Kandell reviewed the bylaws regarding the car-pooling expense. APPROVED by the Board as follows: It is recommended an additional \$2.00 per trip be assessed to each rider on snowshoe and ski trips. The Board then reviewed the new bylaw regarding Car-pooling (see Page 2). The Board moved and seconded a motion to approve. A second motion to table the vote until the next Board meeting. This will allow time for information to be presented in the Bulletin for members to comment (see Page 1).

Obsidians Survey Results: Ed Lichtenstein provided a summary/review of the survey of members provided with the membership renewals. The last survey was taken five years ago and the response rate of approximately 60 percent continued. The survey pointed to some areas where the club could make improvements such as providing information regarding leading trips, involvement in committees. The sign-up board at the YMCA is an inconvenience to approximately half the responders which brings back the idea of working on an internet sign-up system.

Summer Trips 2009: See information above regarding Summer Trips Committee submitted by Jim Pierce. The primary changes are: Recruiting leaders in "waves" - approximately every 2-3 months. One concern would be the elimination of the "season" trip list. Contacting potential leaders with three emails and a telephone call. E-mail the leader packets. In addition, Jim reorganized the "boxes" at the YMCA and is planning to work with Sue Sullivan of the Safety Committee to update the first aid kits.

Urban Hikes Committee: Based upon discussions at the last Board meeting, it was decided to create an Ad Hoc Committee to address fees, free hikes, etc. regarding urban hikes. Stewart Hoeg agreed to chair the committee with Janet Jacobsen, Barb Revere and Marshall Kandell volunteering as members.



LOCAL MOUNTAIN EXPANDING!

By Pat Bitner, Conservation Chair

SHORT MOUNTAIN - SOUND FAMILIAR? Yes, that's our Lane County landfill, located eight miles south of Eugene along I-5. Our mountain of trash is more than 160 feet tall and covers 90 acres - and it grows more than 900 cubic yards per day. This is about the equivalent of a new single-family home, literally filled with compacted garbage each day. We are polluting our environment and wasting resources needlessly.

Sanipac, my garbage and recycling collector, reports that roughly 75% of this material could easily be recycled or composted. The watch words are Reduce - Reuse - Recycle - Rethink. And even after the above bad news, Lane County does recycle 53% of its waste. We have continued to be above the state average, and Oregon remains a leader in recycling. The national average is 32.5% of waste recycled.

With the passage and implementation on January 1, 2009

of the revised Oregon Bottle Bill, all plastic drink bottles will carry a 5-cent deposit requirement. This should help alleviate the enormous waste represented by throw-away plastic drink bottles. Reports are that a huge area of ocean is covered by a dense mass of plastic waste. Many birds and



sea mammals die after ingesting plastic or being strangled by the rings which hold a six-pack together. With the inauguration of our President, Barack Obama, we enter a new era of shared effort, shared sacrifice and shared hope for a better future for

all Americans. We can restore our earth to good health, all of us, together. Recycling and reusing is a part of it.

Sci-Ed Tuesday, February 17, will focus on the link between our throw-aways and climate change. Join Carolyn Stein, BRING Education Coordinator for an enlightening evening.

Janet's Jottings:

Trails, Books & Person of the Year

Ridgeline Trail News

Rerouting: The Ridgeline Trail from the end of Spring up to Baldy has been rerouted with lots of switchbacks and gravel. It is a stunning improvement, capped with a new bench at the top. The trail on the west side still has those steep places near the parking lot on Dillard. There are new kiosks at Spring and Dillard trailheads.

Amazon Headwaters Trail Closure: Christer LaBrecque, Natural Resource Maintenance for Eugene Parks and Open Space, said that the Amazon Headwaters Trail will be closed starting January 26 for the 2-3 weeks while the contractor is resurfacing. This is welcome news!

Resurfacing Tie Trail: Sunday, January 25, a Lane County staff person stopped his motorized wheel barrow so I could ask questions about the Tie Trail. The County has contracted with Department of Youth Services to resurface the Tie Trail that connects the Ridgeline Trail to the Spencer

Butte Summit Trail. Those who hike from the 52nd and Wilamette or the Fox Hollow trailheads use the Tie Trail. The gravel has to be hauled for one mile in the motorized wheel barrows from the end of Kline Road up to the Tie Trail. This project is a tough one. The trail remains open.

Obsidians Noted

Robin Romm's new book, *The Mercy Papers: A Memoir of Three Weeks*, was reviewed on the front page of the January 4, 2009 *New York Times Sunday Book Review*. Ms. Romm writes of the last three weeks of her mother's life. Robin is the daughter of Obsidian **Rich Romm**.

Robert Scherer, Springfield Buick, was named Springfield Business Person of the Year for 2008, at the Springfield Chamber of Commerce's Annual Awards Banquet. He was also honored for his many years of contribution to the Springfield community. Robert and his wife, Terry and their twins, Emily and Sam, are all Obsidian members.

TRIP REPORTS & OTHER ACTIVITIES



Hikes

Courthouse River Walk

Date of Trip: January 6, 2009

Leader: Janet Jacobsen Photo: Jim Pierce

3 Miles, 0 ft. (Easy)



HOW MANY OBSIDIANS does it take to interpret the art at the Wayne Lyman Morse United States Courthouse? On our self-guided tour, five of us shared our thoughts and tried to make sense of the “Jury Pool” on the 2nd floor and “Stare Decisis” on the 3rd floor. The latter was the most challenging with the abstract map of the Willamette River located on the roof representing the river of law and the illuminated painted light boxes with illegible handwriting in the hallway showing the history of the law and Oregon’s development. From there we walked to the Amtrak station to see the Marker of Origin and then along the roaring Willamette River. We appreciated the dry day and each other’s artistic observations. Members: Lynda Christiansen, Janet Jacobsen, Jim Pierce and Julia Richardson; nonmember: Suzanne Steussy.

North Shasta Loop

January 7, 2009

Leader: Ruth Romoser

5 miles, 500 ft. (Easy)

FIVE OBSIDIANS, Sharon Alden, Jim Pierce, Ginny Reich, Julia Richardson, and hike leader Ruth Romoser, walked from Amazon Community Center up North Shasta Loop and down to the Masonic Cemetery and back to our cars via Emerald Street. We stopped at Jim Pierce's house-in-the-woods and posed for pictures. It was a great morning for walking and for city views, and we all enjoyed a simple urban walk which just took a little over two hours!

Sweet Creek Falls

January 9, 2009

Leader: Kathleen Floyd

2.5 miles, 250 ft. (Easy)

THREE OBSIDIANS met at Amazon Community Center and moseyed on out to Sweet Creek Gorge and Falls. It was a beautiful morning to enjoy a crisp walk to the base of the falls. The raging river along with the side creeks and falls were overflowing, and the rock-covered moss and ferns were weeping with mist. It was a grand day! Members who enjoyed this walk were: Jim Pierce, Nola Shurtleff and leader Kathleen Floyd.

Buford Park and Arboretum

January 15, 2009

Leader: Barb Revere Photo: Noreen Pergament

4 miles, 200 ft. (Easy)



AFTER A QUICK SPIN UP SEVERAL TRAILS of the Arboretum, we entered Buford Park and walked south on the Quarry Road. Turning into the meadow, we saw where a fish canal (for salmon) will be dug. Several large cottonwoods have been cut down to make way for the bulldozers, but one hopes it will be worth it to return the river to a more natural state with channels and backwaters, etc. The day was cold enough to redden our cheeks and noses. We hale and hearty souls were: Jim and Sharon Duncan, Jim Pierce, Moshe Rapaport and Barb Revere, members all, and nonmember Noreen Pergament, eagerly taking home an application.

Walk Through the Solar System

January 13, 2009

Leader & Photo: Jim Pierce

7.5 miles, 100 ft. (Moderate)

THANKS TO THE foresight of an Eagle Scout, Eugene has a one-billionth scale model of our solar system, located along and near the banks of the Willamette River. There is an informational plaque near the Sun and beside each planet. Our group started at the Sun, located in Alton Baker Park near the outlet from the reflecting pond. The four rocky planets (Mercury, Venus, Earth and Mars) are within sight of the Sun, but they are scattered around.



Ski Trips



Midnight Lake

January 4, 2009

Leader: Sue Wolling

6.5 miles, 600 ft. (Moderate)

A FRAZZLED TRIP LEADER ARRIVED at the meeting place, unable to open the frozen trunk of her car which contained the tire chains and her ski boots. Although she soon got the trunk open, she decided not to take that car up into the snow. What some leaders won't do to avoid having to drive! Our group of nine skiers headed up to Gold Lake Sno-Park. We made good time, with no need to put on chains, and headed off on the loop from Midnight Lake to Bechtel Shelter and back to the sno-park. Though there had been very little fresh snow, conditions were excellent: light, fluffy snow on a solid base, trail broken but free of frozen ruts, and crisp 20-degree weather under an overcast sky. We quickly reached Midnight Lake, but after a few minutes of admiring it and noticing that it was fairly windy there, we left it to two other groups who arrived just after us, and headed on to Bechtel Shelter for lunch. (And some hungry camp robbers were glad we did!) Gliding through the trees and then on the road down from the shelter was pure joy. We finished a wonderful trip by around 2:30 and headed back. But since it had been such a nice day, we decided we weren't quite ready to be back in Eugene, so we spent an extra 90 minutes on the highway, waiting for a wreck between Oakridge and Salt Creek Falls to be cleared. Members: Bea Fontana, Brian Hamilton, Mary Hamilton, Ed Lezewski, Carol Petty, Clare Tucker and Sue Wolling; nonmembers: Marcia Karnesky and Satnam Khalsa.

Our group pretended we were comets with highly elliptical orbits. Walking faster than the speed of light, we crossed the suspension bridge and hiked along the river to Skinner's Butte Park. Jupiter is beside the bike path about 0.2 miles beyond the Campbell Senior Center. The other gas giants (Saturn, Uranus and Neptune) are beside the bike path over the next three miles. Our group did not visit Pluto, partly because it is now classified as a dwarf planet, but mostly because it would have added another two miles to our 7.5 mile orbit. Enjoying the great hiking weather were past member Suzanne Steussy, and members Ginny Reich and leader Jim Pierce.

Salmon Creek

January 18, 2009

Leader & Photo: Chris Stockdale

7 miles, 200 ft. (Moderate)



A LITTLE KNOWN TRAIL along Salmon Creek out of Oakridge offered a pleasant, though chilly, hike. Starting from a trailhead that is a little tricky to find (out of the fish hatchery), the route led upriver to the Salmon Creek campground and falls. Parts of the trail remained frozen all day, but we were able to find a sunny spot at the campground for our lunch break. The trail is popular with the mountain bike crowd, although we didn't meet any this day. Obsidians Lynda Christiansen, Barb Revere, Brenda Kameenui, Moshe Rappaport and Paul Flashenberg and nonmember Suzanne Steussy, joined leader Chris Stockdale who was celebrating her return to hiking after hip surgery.

Rosary Lakes

January 11, 2009

Leader: Sue Wolling

6 miles, 600 ft. (Moderate)

"WELL, IT'S NOT RAINING HARD. And we shouldn't need chains." Valiantly striving for Obsidian optimism on a dreary Sunday morning, we headed up to Willamette Pass. As it turns out, it was O.K. The snow wasn't great, but it was acceptable, and it softened up a bit during the day so that the long downhill return trip after lunch at the lake wasn't the bobsled run that it can sometimes be. So, enjoying a pretty good day at Rosary Lakes were members Bea Fontana, Sue Meyers, and Sue Wolling (leader) and nonmember Marcia Karnesky. And by the way, if anybody else is heading up to Rosary Lakes, please keep an eye out for a nice pair of black-and-white handmade Icelandic wool mittens that Bea has cherished for 20 years.

Sand Mountain Loop

January 25, 2009

Leader: Sam Miller

10.5 miles, 1,000 ft. (Difficult)

AFTER SEVERAL WEEKS WITHOUT FRESH SNOW our group recognized that the loop around the Little Nash-Sand Mountain area might be a cement-like skating rink. Fortunately, a bit of

snow fell the night before the trip and more snow arrived during our outing. The result was 2-4 inches of fresh powder on top of a firm base. The skiing was surprisingly good so we rewarded ourselves by extending our trip from 9.5 to 10.5 miles, thus adding some pleasant open tree skiing on a long gentle descent. Our group for this outing consisted of members Sue Wolling, Chrissy Anderson, Dave Jensen and Sam Miller (leader).



Snow Shoe Trips

Trapper Creek

January 3, 2009

Leader: Paul Flashenberg
4 miles, 500 ft. (Moderate)

HAVING RESCHEDULED THE TRIP DUE TO WEATHER and losing two drivers, this trip was in jeopardy until a non-member volunteered to drive. Unfortunately, he was the only driver so only five of us left Eugene under surprisingly sunny skies. The bridge crossing Trapper Creek was impassable due to snow drifts, so we backtracked a little ways and started up Whitefish Trail (aka Diamond View Lake Trail) which follows Trapper Creek. Conditions were ideal with about five inches of fresh powder, and the trail clearly marked from previous snowshoers. After a leisurely lunch stop right by the creek, we headed back to Shelter Cove. Everyone agreed it was a lovely first snowshoe of the season. Members: Paul Flashenberg, Sachiko Iwasaki, Daphne James and Sue Meyers; nonmembers: Dale Schaper.

Bechtel Shelter

January 10, 2009

Leader: Marianne Camp Photo: Jim Pierce
5 miles, 500 ft. (Moderate)



WHEN LEADERS SCHEDULE A TRIP they never know the type of weather they will experience. When we reached Oakridge a wind blew so hard that the drivers held tight to their wheels. The road signs warned of spots of ice, and the first thing we saw was a pickup on its side with the three occupants wondering how that happened. Within a mile the vehicle in front of us lost control,

spinning three times and landing on the other side of the road facing us. We did not let this stop us. We drove slowly and arrived safely, enjoying a spectacular day in the snow. We were the first on the trail with four inches of fresh fluffy powder. The sun was bright and the flakes had large crystals shining on the surface with lots of tree branches covered in fresh snow. We were enjoying the day so much that we stopped for a short side hike to take in a view of Salt Creek Falls. It was a day to remember! Members: Marianne Camp, Daniele Delaby, Paul Flashenberg, Sue Meyers and Jim Pierce; nonmembers: Donald Burton, Peter Eberhardt and Marcia Maffei.

Lava and Fish Lakes

January 10, 2009

Leader: Scott Hovis Photo: Barb Revere
4 miles, 100 ft. (Moderate)



THIS IS A NICE TRIP FOR A LEISURELY WALK with minimal elevation gain. When walking north from the sno-park to Lava Lake it is worth the bushwhack 300 yards to the right (south) to the lava field. Climb the 20 feet to the top to see a good view of Three Fingered Jack. Caution: there is some barbed wire in the area. Fish Lake, across the highway and west of Lava Lake Sno-Park, is where you will find the historic Fish Lake Remount Depot Cabins. I was surprised to see one of the state's giant snowplows working in the sno-park on a Saturday. The noise was very loud. Members: Mari Baldwin, Scott Hovis and Barb Revere; nonmembers: Sherrill Bower.

Fish Lake Remount Depot Cabins

January 14-16, 2009

Leader: Scott Hovis
10 miles, 200 ft. (Moderate)

THE HISTORIC CABINS have been maintained nicely although the stove in the large cabin does not work except for the top burners. It's too bad the highway is now so close, as the traffic from the road takes away from the wilderness experience. Nonetheless, it's a wonderful place for a get-away. One plus with having the many roads in the area means you can always get back to your car (or the cabins) with basic trail-finding skills, so we did some bushwhacking. The cabins have a book about the history of the area, and it was with pride that we noticed many references, including pictures, of Obsidians. One photo of an Obsidian was dated 1933. We had planned to snowshoe at Ikenick Sno-Park across the highway from Clear Lake on the way home, but

it was closed due to logging. We were there on a Friday so the situation might be different on a Saturday or Sunday, but I'd call ahead. Members: Daphne James and Scott Hovis; nonmembers: Keiko Bryan.

Rosary Lakes

January 17, 2009

Leader: Matthew Bell

8 miles, 700 ft. (Difficult)

WE MET IN THE SOUTH EUGENE HIGH SCHOOL parking lot at 6:00 am and headed for Willamette Pass. We arrived at Willamette Pass a little after 7:30 and began our trip just before 8:00. Unfortunately, the snow conditions on the trail were horrendous. The snow was extremely crusty and icy which meant that snowshoes were almost unnecessary. Beyond the condition of the snow on the trail, we could not have asked for a better day for snowshoeing. It was sunny all day with not a single cloud in the sky, and there was a very unusual and warm wind from the south. Our group of snowshoers made exceptional time up to Lower Rosary Lake, arriving by about 10:00 am. As we skirted along the banks of the Rosary Lakes, Pulpit Rock and the adjoining ridge started to look more inviting. Since we had made such great time and were all still feeling great, we decided to climb up onto the ridge and follow it back south to the bottom of Lower Rosary Lake. We went off of the PCT above North Rosary Lake and headed up towards the ridgeline. After a very, very steep ascent we reached the top of the ridge and looked for a place to stop and have lunch. We found a bench on the south side of Pulpit Rock and enjoyed the sun and views. From the ridge we were able to enjoy beautiful views of Maiden Peak to the east, Lower Rosary Lake below us, and Odell Lake to the south. We made our way back along the ridge and then descended down to the PCT below Lower Rosary Lake before heading back to Willamette Pass. Unbelievably, we did not see any other people until we were well on our way back to Willamette Pass, probably due to the poor snow conditions. Participants: members Matthew Bell (leader), Elle Weaver, Ed Lizewski, and nonmembers Brent Clark and Dwight Golann.

Craig Lake

January 21, 2009

Leader: Susan Sullivan

6 miles, 800 ft. (Moderate)

THIS TRIP WAS ORIGINALLY BOOKED as a cross country ski trip, but the lack of any fresh snow in the past couple of weeks convinced us that it would be more fun as a snowshoe trip. And it was fun! Three of us left the stagnant, smoggy air in Eugene and headed up to mild temperatures and occasional sunshine at Santiam Pass. We donned snowshoes and headed up on crusty snow through the burned area north of the Santiam Sno-Park, curved around toward the west through the Lost Lake Creek drainage, and approached Craig Lake on the ridge to the south of the lake. The trick to making this an enjoyable experience is to get on this ridge at the right spot that isn't too steep (for GPS geeks, the UTM waypoint for the ideal crossing is at 10T 589415 4921180 [NAD27]). We got to the lake relatively easily and enjoyed the views of Three Fingered Jack and Mt. Washington. I did have a couple of moments when I wished I had skis on the descent, as the snow was beginning to soften up, but by the time we got back to the sno-park, a crust of ice was already be-

ginning to form in the shady spots so the snowshoes were a good call. Participants were members John Mowat, Moshe Rapaport, and leader Sue Sullivan.



Trail Maintenance

Ivy Removal Along the Willamette

January 14, 2009

Leader: Jim Pierce

IT WAS A DRY DAY FOR TAKING IVY OFF THE TREES along the bike path. We started opposite the Campbell Center and in three hours managed to get about 200 yards downstream. The trees loved us! The four ivy removers were nonmembers Helen and Bill Rocket, and members Pat Hutchins and Leader Jim Pierce.

Spencer Butte

January 24, 2009

Leader: Peter Green Photo: Christer LaBrecque



WE HAD FOUR MEMBERS help with a planting project on the North Side Trail on Spencer Butte. Janet Jacobsen, Matt Bell, Ed Lizewski, and Peter Green. Our next outing will be February 28th at 9am.



SciEd Tuesday

Klamath Wildlife Refuge Dwindling

January 20, 2009

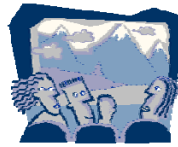
Reported By Joella Ewing

THE KLAMATH BASIN NATIONAL WILDLIFE REFUGES once had 350,000 acres to serve the 80 percent of the Pa-

cific Flyway birds who rest, refuel and breed here. Now it has only 80,000 to 100,000 acres. Once, 700,000 birds used the basin's marshes. That number has been reduced to 150,000, according to Ani Kame'enui, the Klamath Campaign Coordinator of Oregon Wild, who spoke to the January SciEd Tuesday attendees.

Four hundred thirty species of animals, of which 260 are birds, make their homes here, but their numbers are dwindling as most of the 14,000 acres of marsh in Upper Klamath Lake is drained dry by the 240,000 acres of farmland that get Refuge water when they need it. Heavy pesticide use and other activities of large-scale agribusiness in the area are harmful to the wildlife. Farmers pay the same amount today for water rights as they did in 1908.

Oregon Wild advocates for, and works with local farmers to achieve what is best for water conservation and the biological integrity of the refuges. The National Wildlife Refuge Improvement Act calls for scientific evaluation of farm/refuge compatibility and to bring back balance with what the basin can normally provide. Buying out farms and consideration of dam removal are on the table. Other options include banning pesticides and phasing out subsidies.



Potluck

Bill Sullivan – Oregon Disasters

January 23, 2009

Reported By Jim Pierce

BILL SULLIVAN GAVE ANOTHER GREAT PROGRAM at the January pot luck. He dazzled us with disasters and filled us with facts. Bill focused on natural disasters that have occurred in the last 14,000 years, ever since people have been around to be victims. The most devastating disasters have been huge floods caused by ice dams on the upper Columbia during the last ice age. More recently there have been rain/snow melt river floods that have taught us what flood plains are for.

The plate subduction off the Pacific Coast has caused mountain building, volcanic eruptions, earthquakes and tsunamis (another flood, hmmm). Bill explained that all of these disasters have “normal” cycles and are part of the natural order. It is man, with our recent history, that is just now learning.

There were 54 for the potluck and 63 for Bill's presentation.

OTHER ORGANIZATIONS' UPCOMING

Events at the Arboretum

Wild Child Survival Skills!

Session 2: Shelter & Fire

Sunday, February 15th, noon-2pm

Session 3: Water and Food

Sunday, February 22nd, 10:30-12:30

Learn basic safety and prevention, awareness, and attitude, as well as how to build a shelter and start a fire, with tons of outdoor time and great games and activities. Geared towards kids 5-11 years of age and their grownups. Meet at the Visitor Center. \$8 per kid or \$5 per kid with a family membership, and adults are free with child. Call Clare at 747-1504 or email mtpisgjp@efn.org for more information or to sign up.

Outdoor Volunteer Work Party

Sunday, Feb. 18, 12:30-3:30 Repair fence and invasive plant control.

Sunday, Feb. 22, 12:30-3:30 Spruce up Watergarden and prep for wildflower season. Meet in front of the Arboretum Visitor Center. To RSVP contact Tom LoCascio at pis-gah4@epud.net or call (541) 954-5463.

Wild Edibles and Herbs Walk

Saturday, February 21, 10am-noon

Hungry? Take a walk with herbalist Sue Sierralupé, and find out which local plants are good to eat and good for you. \$5/members

free. Meet at the Arboretum Visitor Center, rain or shine.

Adventures in Arborism Walk

Sunday, March 1, 10am-noon

Join arborist and Arboretum board member Scott Altenhoff on The Most Amazing Tree Walk Ever. Learn about trees and the wide variety of organisms that depend on them, find out how to maximize the habitat potential of trees and attract wildlife, and learn what the Arboretum is doing to release precious Oregon white oaks from competition with conifers, while enhancing habitat. Scott has great stories about the high-climbing life of an arborist, from what it's like to wield a chainsaw while dangling 100 feet above the ground, to how one rescues a fallen baby owl. \$5/members free. Meet at the Arboretum Visitor Center, rain or shine.

Eugene Natural History Society

Biodiversity Hotspots around the World! Amazon Community Center, 2700 Hilyard, Eugene. Bitty Roy, Professor of Biology, University of Oregon, will give the talk, February 20, 7:30 PM. Free of charge. For more info: 344-3327.

Green Gold: West Eugene's Grassland Communities Presented by Emily Steel, a passionate restoration ecologist in our community. March 20, 7:30PM, in Room 100, Wilamette Hall, UO campus. Free of charge.

UPCOMING EXTENDED TRIPS

Malheur National Wildlife Refuge, May 8-10

AN EXTENDED TRIP LED BY **MARIANNE CAMP** has been scheduled for the May 8-10 weekend in Frenchglen, which is about 60 miles south of Burns, adjacent to Malheur National Wildlife Refuge in southeastern Oregon. Malheur Wildlife Refuge is one of the most important freshwater marshes in the western US. Three major bird migration corridors within the Pacific Flyway converge here, creating a way station for all kinds of birds - waterfowl, shorebirds, songbirds, and birds of prey. Our very own Rick Ahrens will be participating on the trip as the resident naturalist. The focus of this trip is birding; bring your binoculars!



Trip participants will be staying in the historic Frenchglen Hotel, which was established in 1916 and is a popular destination for people from all over the world. Many historical sites are close by, the Alvord Desert is just an hour away and Steens Mountain is right outside the hotel's front door (although snow levels will prevent driving to its top so early in the year).

The hotel's evening meal is served family style and is good home style cooking. It will provide a nice setting for

sharing the day's adventures. The most popular dessert is homemade marionberry cobbler a la mode.

The hotel has eight rooms, each with double beds and shared bathrooms down the hall. A newer motel style addition has five rooms with queen beds and private baths. The cost of the trip will depend on your desired unit and occupancy. Breakfast and lunch are not included in the cost.

Prices, which include your room and dinners for both Friday and Saturday, are: Double bed rooms, single occupancy, \$210; double occupancy, \$140 each. Queen bed rooms (private bath) single occupancy, \$240; double occupancy, \$155 each. Non-members, add \$10.

Additional information regarding the logistics of the trip will be provided at a pre-trip meeting.

To reserve a spot, send a \$10 nonrefundable check payable to Obsidians, Inc to Marianne Camp, 1245 W. 16th Ave., Apt. 1, Eugene, OR 97402. Please include your phone number and email address. Deposits need to be received by March 1st. Questions: Call Marianne at 221-1866 or email at mcamp@hsolc.org

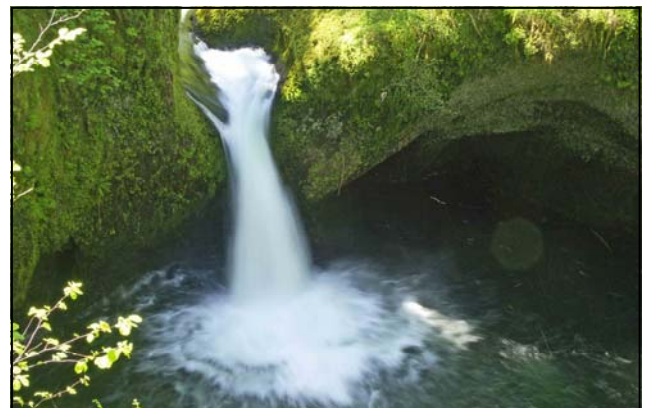
Columbia Gorge Waterfalls & Wildflowers, May 27-29

HAVE YOU ALWAYS WANTED TO EXPLORE the waterfalls in the Columbia Gorge or hike Dog Mountain, but just haven't found the energy to plan an overnight trip? Here's your opportunity to do so with other Obsidians.

Lana Lindstrom is leading an extended Obsidian trip on Wednesday, May 27 to Friday, May 29, staying at Menucha Retreat and Conference Center in Corbett. This beautiful, peaceful, not-for-profit facility sits on a bluff above the Columbia River, 25 miles from downtown Portland and two miles west of Crown Point Vista House.

We'll explore nearby trails and waterfalls and hike to the top of Dog Mountain (Washington side) - spectacular views overlooking the Columbia will reward us. Wildflowers should be at their peak. See the July, 2008 *Bulletin* for last year's trip report: [http://www.obsidians.org/bulletin/Issues/2008 Bulletins/2008 07 Bulletin.pdf](http://www.obsidians.org/bulletin/Issues/2008%20Bulletins/2008%2007%20Bulletin.pdf)

We will stay in two separate buildings (Beam and Lindsay), each of which has rooms with either double or single beds. There will be two persons in most rooms, and three in a few rooms. Bathrooms are shared. Both buildings have living rooms to lounge around in or play cards or games.



For additional information about the Center, see: www.menucha.org. First come, first served; this trip will sell out quickly.

Breakfasts and dinners are served family style; we'll make our own lunches to take with us on our hikes. Six meals are included, starting with dinner on Wednesday night

(Continued on page 12)

John Craig Memorial Invitation

The *Bulletin* staff recently received an intriguing email from Chrissy Anderson:

HI, I'D LIKE TO SKI THE 30K John Craig Memorial Ski Race over the scenic McKenzie Pass this year, and I want to invite other Obsidians to do it with me. The Oregon Nordic Club puts it on each year, and I just called the contact person, and they are still working out a few details. The event is on Saturday, March 14. There is an online registration form. They have a shorter option too for those who don't want to do the full 30k. We would probably have to go up Friday and stay overnight, because the race starts around 6 am. I would want everyone to handle their own registrations. There is a post-event meal at a hotel in Sisters included in the registration fee. Also provided is the shuttle to get everyone over to the west side for the start. There are aid stations along the course. The Willamette Ski Patrol is handling the support.

Thanks! Chrissy

If anyone is interested in joining Chrissy, you can contact her at 946-1732 or chrissyanderic@hotmail.com. Check out details online at:

http://www.tumalolanglauf.com/events/john_craig_memorial.html

History of John Craig & the Memorial Race

Courtesy of the Oregon Nordic Club

TWO MILES WEST OF THE MCKENZIE PASS SUMMIT and marked by the Dee Wright Observatory, is the John Craig Memorial. John Templeton Craig was born in 1832 and grew up in the McKenzie Valley. By 1871 and for 25 years thereafter he was in charge of the McKenzie Salt Springs/Deschutes Wagon Road.

After its completion the government routed the Eastern Oregon/Upper Willamette Valley mail over the road. In summer the mail was carried on horseback. In winter it was carried on John Craig's back. To accommodate the mail carrier, a cabin was erected about half way across, in which he could spend the night.



On December 3, 1877 John Craig set out from the McKenzie Bridge, heading east, with the Christmas mail in a heavy backpack. He never returned. His death was not confirmed until spring 1878, when two men reached his cabin and found his body curled in the ashes of his fireplace. It is believed that Craig, suffering from exhaustion and possibly ill, reached the shelter, built a fire and fell asleep. When he awoke he found the fire had gone out. Attempts to rekindle it apparently failed and the half frozen man crawled into the warm ashes and died.

In 1930 the John Craig Memorial was built. It was dedicated by 400 of Oregon's rural mail carriers. The John Craig Memorial Ski race was first held in 1934 but after 2 years it floundered-only to be revived in the 1940s. WWII interrupted the race again but in 1951 it was revived. It failed to catch on once again. It was not until 1972 when the Oregon Nordic Club revived it. It has been running continuously ever since.

Editor's Note: Eight Obsidians participated in the 1951 race. For more information see:

www.tumalolanglauf.com/events/race_results/John_Craig

Columbia Gorge Extended Trip

(Continued from page 11)

and ending with a sack lunch for Friday. We'll take turns serving breakfasts and dinners.

There will be a pre-trip meeting Thursday, May 7, 7 pm at the Lodge. Cost will be \$145 for the accommodations and 6 meals (members); \$155 (nonmembers). Maximum number of participants: 18.

To reserve your place, send a *non-refundable* check payable to Obsidians, Inc. for \$20 to Lana Lindstrom, P.O. Box 5506, Eugene, OR 97405. The balance will be due no later than April 15. If you want to share a room with someone, include their name with your check.

North Cascades, August 19-23

THERE ARE STILL A FEW OPENINGS for the Extended Trip to the North Cascades led by Jim Pierce, August 19-23. The cost is \$55 for campsite and four group dinners. Make out your check to Obsidians for \$55 (\$60 non-member). Send your check to leader Jim Pierce; 1775 Cameo Drive; Eugene, OR 97405.



Winter Valentine Specials

Thurs., Feb. 19 -- River Trail – Hike, easy. Marshall Kandell is leading several urban hikes in the next few weeks. All are *easy* or *moderate* and right in town. This is a great chance to see old Obsidian friends and meet new ones -- and get some exercise at the same time. I'm told the fresh air is intoxicating on these hikes and they always seem to wind up at one of our wonderful local bakeries! Beat the winter blahs, boost your health and 'bail out' Eugene bakeries! Other routes include: Pre's Rock and Rexus Trail. See online schedule: 2/16, 3/2 & 3/5.

Sat., Feb. 21 – Ray Bensen Sno-Park -- X-Ski, difficult. Leader Valerie Metcalfe promises a loop route in this gently rolling terrain. The trip is rated *difficult* due to distance, but skiers should be able to handle occasional trail "narrowings", all snow conditions and steeper areas along the trail. *Ten mi., little elevation gain.* Note: Another trip to this snow park, rated *moderate*, and led by Laurie Funkhouser, is slated for Sat., Mar. 7th.

Same Day – Diamond Creek Falls – S'Shoe, easy. The falls on Salt Creek and Diamond Creek are never more beautiful than in winter when their black cliffs wear frosty whiskers. This familiar trail is a mostly easy loop, with a couple of challenging spots to keep it interesting. 'Experienced beginners' okay on this trip, but checkout your gear and clothing well ahead of time, so that you and your leader, Charles Durham, can enjoy the day. **Nearly 4 mi. & 250 ft.**

Same Day – Fawn Lake – S'Shoe, moderate. South of Odell Lake and on the NE boundary of Diamond Peak Wilderness, this trail leads into a valley embraced by Lakeview and Redtop mountains. The scenery is fabulous and so is the solitude that is likely to be yours when you take this trip led by Matt Bell. **6.5 mi., 600ft.** You can also do this trip on Sat., Mar. 7th, led by Brian Hamilton.

Sun., Feb. 22 – Arrowhead Lake – X-Ski, difficult. High above Odell Lake's west end sit many much smaller lakes, all linked together by the Pacific Crest Trail. After leaving the hubbub of Gold Lake Sno-Park, Arrowhead Lake is the second snow-blanketed "meadow" along the forested trail. Laurie Funkhouser leads this trip that is sure to become a favorite. **8 mi., 800 ft.** NOTE: Another chance at this destination is led by John Cooper on Sat, Mar. 14.

Tue., Feb 24 – McKenzie River Trail – Hike, moderate. Different from the rest, this trip takes an easy route along the famed McKenzie River National Scenic Trail from the McKenzie Bridge Ranger Station to Belknap Resort. We have many choices at the resort – but the best in my opinion is the 102 degree soaking pool. To top it off, the ride to the trailhead is via LTD bus, for a whopping \$3 round trip! **8 mi., 200 ft.** Led by Barb Revere.

Fri., Feb. 27 – West Eugene Wetlands – Hike, easy. This walk, very close to town, explores the spectacular West Eugene Wetlands. Bring your binoculars and bird guide, or just enjoy the conversation and fresh air, while you explore with leader Chris Cunningham. **5 mi., flat.**

Same Day – Row River Trail – Hike, moderate. Down in Cottage Grove, along the river and Dorena Lake, you'll hike the bike path with leader Sandra Larsen. Among many points of interest along the way: Row River, Mosby Creek, three covered bridges and many city and county parks. **10.6 mi., mostly flat.**

Sun., Mar. 1 – Birthday and Verde Lakes – X-Ski, difficult. Chrissy Anderson leads this trip, for hardy and seasoned skiers, into the Island Lakes region, between Mt. Ray and Mt. Fuji. The scenery is unsurpassed, with views of Diamond Peak and the surrounds of south Waldo Lake. With decent weather and snow, your day will be perfect and well worth the effort. **9.5 mi., and 1200 ft.**

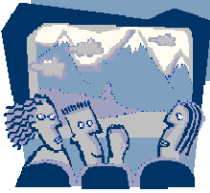
Sat., Mar. 7 – Gold Lake – S'Shoe, moderate. This beautiful snowshoe trip near the sno-park with a couple of creek crossings and a rustic shelter for lunch is led by Charles Durham. Your route follows a forest trail down to Marilyn Lakes, then on to Gold Lake & Shelter. Your route back climbs out on the same trail, or a convenient and easier road, so save a few bites for quick energy. During lunch, watch for the charming gray jays that appear the minute someone rustles a food wrapper. **4 miles and 200 ft.**

Sun., Mar. 8 – Prairie View Loop – S'Shoe, easy. This beautiful trail system, in the Ikenick Sno-Park, is the setting for an easy Sunday jaunt. Part trail and part unplowed road, your route is directly south of Fish Lake and across the highway from Clear Lake. Possible views include Mt. Washington, the Sisters and other major Cascade peaks. **5.5 mi., 150 ft.**

Thurs., Mar. 12 – SW Eugene Hills – Walk, easy. Take an easy in town tour of the southwest neighborhoods of Eugene. Joanne Ledet has been leading this trip, in all weather and seasons, for three years and it continues to grow in popularity. "There is a little bit of everything," including a little-known nature trail." **4 mi., 500 ft.**

Fri., Mar. 13 – Larison Rock – Hike, easy. Just a minute out of Oakridge and you can hop onto an interesting trail up to this large monolith, with views of surrounding forest and, you guessed it, Oakridge. Your route is through an old-growth area and very beautiful. The final few hundred yards are steepish, but then you get the sense of accomplishment as you scramble out of the tall trees to the top of the rock and, I hope, bask in the sunlight. **5 mi., 500 ft.** Led by Ruth Romoser.





Stove Team

OBSIDIANS ARE GENEROUS INDIVIDUALS! I know many members volunteer their time to the club as well as to other organizations and community concerns. Join us on Friday, February 27, 2009 for an introduction to an opportunity to learn about volunteering, having an adventure, and providing a wonderful benefit to a community outside of the United States!

Stove Team (www.stoveteam.org) was started by Nancy Hughes, a Eugene resident, who saw a need and took the initiative to find a solution. And what a successful impact it has had!

Come, learn what Stove Team is all about....it may meet your urge to help others and have an adventure.

- Jim Pierce



February Potluck - Friday, February 27, 2009
Obsidian Lodge - Potluck, 6:30 p.m. Program, 7:30 p.m.
Bring your favorite potluck dish to share...along with plates, utensils and cups... plus \$1 to help cover club expenses.



Science of Recycling

DIDN'T THINK RECYCLING COULD BE EXCITING and meaningful? Let our February SciEd presenter help us to understand just how important reusing or recycling our "stuff" is to the future health of our planet. On Tuesday, February 17, at 7 PM, BRING Recycling's Education Coordinator, Carolyn Stein, will present a one-hour slide show on the link between the use of natural resources, solid waste and climate change. By examining our consumption patterns, the things we use and what we throw away, we will learn how we can mitigate the negative effects of climate change and protect the wild places we love.

BRING Recycling is one of the nation's oldest non-profit recyclers. Since 1971, they have encouraged people to rethink what they use and what they throw away. They help the community keep useful items out of the landfill, find ways to use less stuff, reuse as many things as possible and recycle the rest. From collecting and processing household recyclables to teaching kids about us-

ing worms to compost, BRING has a wealth of information, practical tips and programs to help us live sustainably in Lane County.

Carolyn has a background in aviation and spent several years flying as a commercial helicopter pilot throughout Asia. Her interest in conservation and sustainability began during that time and was greatly influenced by the aerial crop dusting industry. She left aviation in 1997 to raise a family and has worked simultaneously in education and sustainability as the director of an early childhood education program and as a partner/owner in Oregon's first biodiesel facility, SeQuential-Pacific Biodiesel, where waste vegetable oil is turned into cleaner burning, renewable fuel. Her one year anniversary with BRING will be in February of this year and she is currently developing a business education program for Lane County businesses.

- Joella Ewing, SciEd Chair and Pat Bitner, Conservation Chair



Mt. Pisgah Oak Restoration

March 17, 10am - 1pm

FRIENDS OF BUFORD PARK is organizing a tour for the Native Plant Society and the Obsidians at the oak restoration project area on Mt. Pisgah. Jason Blazar is leading the tour of restoration work achieved last fall.

The tour, sponsored by the SciEd Committee, takes place on Tuesday, March 17, 10 am to 1 pm. Janet Jacobsen will post a sign up sheet at the Y. There will be no trip fee. It is not necessary to sign up: just meet at the Mt. Pisgah Arboretum parking area around 9:50. The tour will involve hiking up about 2/3's of the way to the top.

This is a follow up to the introductory tour that Dave Predeek helped organize for Obsidians on May 19th of last year. Anyone who has hiked up Mt. Pisgah in the last few months has seen evidence of the work to protect the white oak savannah. If you have any questions, call Dave Predeek at 345-5531.



Upcoming Bus Trips & Rally

TWELVE BUS TRIPS are planned for this year. The first trip will be Eagles'n More, an over-night trip February 17-18, led by Rick Ahrens. There are two multi-day trips, both to California; one will include a ride on the Skunk Train, and the other three-night trip will be to the Trinity Alps. There are nine one-day trips, including a trip to the St. Paul Rodeo July 4. Barbara and Paul Beard have already reserved comfortable seats in the shade. Come to the Bus Rally at the Lodge on Sunday, February 22 from 1-4 pm, to find out more about bus trips, enjoy coffee and goodies, and sign up for trips you want to take. In this *Bulletin*, there is an insert containing the complete list of all the trips.

Editors Note: The bus schedule insert mentioned above is inserted only with the mailed hardcopy of the *Bulletin*. The bus schedule is available on the Obsidian website.

Trail Maintenance

Spencer Butte & Ridgeline Trail System

Saturday February 28, 9am-Noon

JOIN THE OBSIDIANS & EUGENE PARKS & Open Space staff to work on one of the Ridgeline trails. The Eugene Parks and Open Space staff will provide gloves, shovels, and whatever is needed. Although strong backs are helpful, the jobs vary. There is something to do for everyone at all skill levels. Coffee and snacks will be provided. Trail tending is a rewarding way to spend a few hours on Saturday morning.

Obsidian Calendar

February

16 Mon - Alton Baker to Pre's, Hike, M, Kandell345-8095
17 Tue - Science of RecyclingSci Ed
17-18 Tue-Wed - Eagles 'N More, Bus, L.Reanier687-1925
19 Thu - River Trail—Skinner Butte, E, Kandell.....345-8095
21 Sat - Benson SP Loop, S'Shoe, D Metcalfe
21 Sat - Diamond Creek, S'Shoe, E, Durham687-0885
21 Sat -Fawn Lake, S' Shoe, D, M. Bell.....503-884-8829
22 Sun -Arrowhead Lake, X-Ski, D, Funkhouser206-2303
22 Sun -Bus RallyLodge
24 Tue -McKenzie River Trail, M, B. Revere.....726-4989
27 Fri - Eugene Wetlands, 5m E, Cunningham344-0486
27 Fri - Row River Trail, D, S.Larsen687-2589
27 Fri -Stove Team.....Potluck
28 Sat -Berely Lakes, X-Ski, M, Hamilton343-6550
28 Sat -Spencer Butte, Trail Main, Green.....510-1511

March

1 Sun - Birthday/Verde Lk, X-Ski 9.5m D, Anderson ..946-1732
2 Mon- Pre's & River Trail, E, M. Kandell345-8095
4 Wed - Baldy/Ridgeline Tr 5 mi M, J Jacobsen.....343-8030
5 Thu - Rexius Trail, E, Kandell345-8095
6 Fri -Maiden Peak Cabin,X-Ski, D, Wilkin.....343-3080
7 Sat - Gold Lake, S'Shoe, M, C.Durham687-0885
7 Sat -Ray Benson, X-Ski, M, Funkhouser206-2303
8 Sun - Prairie View Loop, S'Shoe, E, S.Kuhn.....515-0768
11-13 Wed-Fri - Big Lake, Lindstrom683-1409
12 Thu - SW Hills of Eugene, 4m 500' E, Ledet.....683-2603
13 Fri - Larison Rock, 5m 900' E, R.Romoser.....726-8154
14 Sat -Arrowhead Lake, X-Ski, D, J. Cooper344-8517
17 Tue -Cross Country Bike.....Sci Ed
24 Tue -Skinner Butte Eagles, E, Essenberg.....343-1733

Classifieds

For Sale

Barrasters Ski Rack-Fits on cars with gutters. Excellent condition. Bargain price: \$25.00. **Bike rack** \$20.00. Fits on car trunk. Contact Sandra at 687-2589 or sglars@comcast.net

Used Equipment Sale

Every year the Mazamas hosts a used equipment sale, of gently used climbing, backpacking, hiking and XC skiing gear. The sale will take place Saturday, March 28th 2009. Details at: <http://www.mazamas.org/your/adventure/starts-here/C22/>

For Rent

Sunriver Chalet: Sleeps 4, close to village, fully equipped. Great for skiers visiting Central Oregon. \$80/night. Contact Ginny Reich at 686-8188 or greich@comcast.net

For Rent

Yachats Rental: 1 block from beach and walking trail. Rooms (\$60-80/night) downstairs or house with upstairs ocean views (\$190-250/nt). Availability/questions: jjobaer@gmail.com

Wood For Sale

WOOD - Green fir, cut and split at the Obsidian Lodge. You haul. \$120/cord. Contact John Jacobsen, Grounds Chair at 343-8030 or johnwjacobsen@comcast.net



A frosty Salmon Creek Trail. See trip report Page 7. Photo by Chris Stockdale



OBSIDIANS, INC.
P.O. BOX 51424
EUGENE, OR 97405

OBSIDIANS, INC. IS A NON-PROFIT ORGANIZATION

PRESORTED STANDARD
US POSTAGE
PAID
EUGENE, OR
PERMIT 803

RETURN SERVICE REQUESTED



February 2009