

### Inside This Issue

A Rich Heritage	1
Meet the Committees	2
Obituary	2
Conservation Corner	3
John Cecil Remembers	4
Wildflower Displays	5
Board Notes	6
Trip Reports & Activities	7-9
Upcoming Events	10-15
Others Upcoming	11
Barb's Sampler	13
At the Lodge	14
Classifieds	15
Calendar	15
Picture of the Month	16

### Dates to Remember

Mar 17	Riding - SciEd Tuesday
Mar 27	Camp Ishi Rally- Potluck
Mar 28	April Bulletin Deadline
Apr 1	Board Meeting
Complete current schedules at: <a href="http://www.obsidians.org">www.obsidians.org</a> or Register-Guard – Outdoors – Tuesday	

Camp Ishi  
Summer Camp Rally  
See Page 14

Camp Ishi  
Summer Camp 2009  
Registration Form  
See Bulletin Insert  
Online viewers: Access the Summer Camp Registration Form at the Obsidian website.

### Trail Maintenance:

## A Rich Heritage

By Janet Jacobsen

**A**T THE JANUARY TRAIL MAINTENANCE EVENT a city staff member asked how long the Obsidians had been doing trail maintenance. My first response was, "Forever." Actually it wasn't until 1982 that the Board created a standing committee for "maintaining and constructing hiking trails". At that year's October annual meeting the committee chair reported 26 work parties with 79 participants doing 224 man-days of work, estimated to be 1250 man hours of work with 62 miles of trail either maintained or constructed. Four Forest Service Volunteer Certificates were awarded to John Cecil, Peter Cecil, Betty Macy, and K. C. Kraft. Mary Bridgeman, Wilbur Groner, Lee Hatch, Steven Kraft, Helen Smith, and Jerold Williams earned Forest Service volunteer patches. Obsidians, men and women, were off to a good start.

The following historical glimpses came from old *Bulletin* reports, emails, and phone calls.

Wayne Deeter's detective skills provided this list of past Trail Maintenance chairs:

82-83 K. C. Kraft	95 Jean Ridone
84-85 Pete Cecil	96 Doug Nelson
86 John Cecil	97 Brian Hoyland
87-88 Larry Cash	98-02 Dave Predeek
89-90 Becky Hansen	03-04 Wayne Deeter
91-92 Velma Shirk	05-06 Peter Asai
93 Ray Jensen	07-09 Peter Green
94 Royal Murdock	

### Helen Smith, Volunteer

**IN THE MARCH 1991 BULLETIN** Helen reported that "For 16 years, Mary Bridgeman and I have been working for Lowell and Blue River Districts of the Willamette National Forest under their Volunteer Program. About nine months of the year are for Lowell and then three months in the summer for Blue River. At Lowell we work four days a week, about 4-6 hours per day. In the summer for Blue River it is all day for several weeks at a time as Wilderness Information Specialists (Wilderness Guards). After retiring from clerical work in Eugene I wanted to be outdoors, walking the trails. That is what we do, making notes of trail conditions we find which need improving. We report to the Recreation Officer and get permission to do the

*(Continued on page 4)*



Obsidian trail maintenance crew building bridge over Deception Creek. Painting by Dallas Cole

## Meet the Committees:

### Elle Weaver Publicity Chair



**W**HEN JIM DUNCAN CALLED to ask me if I would be interested in being the Publicity Committee chair, I was certain he had called the wrong number. Publicity? I had only been a member for less than two years, but then let's see. Since June 2007 I've had lunch beside so many beautiful waterfalls that I've lost count. I've snowshoed with leaders who could sniff out trails that were invisible to me. I've scanned the horizon from the tops of mountains. Friends back east and new friends here frequently ask how I've seen so much of the state in such a brief time. With the Obsidians – of course!

Our committee's first goal is to design a brochure that expresses the club's mission "...to encourage our citizens to enjoy the outdoors and see its value as a community asset ..." by highlighting our multitude of activities. When I first moved to Eugene a *Walk with Me* newsletter posted at a laundromat led me to Tyler Burgess' walking group and on to the Eugene Marathon. It was a great way to dive into a new community. Our brochure may also be just what is needed to invite a newcomer or a long-time resident to investigate our website, or join a trip. Along with the schedule that is posted at several locations, the brochure will be an extension of our club to reach out to prospective new members. New members may be future trip leaders who will add their special trails to our extensive schedule.

We are also in the process of collecting photos to make visual displays of our trips, camps, potlucks and all the things we have so much fun doing. The Eugene Celebration is our target for using the posters, but we would also like to begin to contact a few organizations to introduce our club. Do you have a photo you'd like to share? Please send it to [publicity@obsidians.org](mailto:publicity@obsidians.org).

Being on the Publicity Committee is my way of thanking the Obsidians for opening unexpected adventures for me and for the friends I've made with its wonderful members. Please join our committee as an Obsidian ambassador during Eugene Celebration, Berg's Night, or any event needing volunteers. It will be the easiest committee job you'll have. All you'd have to do is just talk about all the fun it is to be an Obsidian.

## OBITUARY

### Robin Steussy 1921-2009

**F**ORMER OBSIDIAN MEMBER, Robin E. Steussy, died Feb. 18 of age-related causes. He was 87. No service is planned. At a later date his ashes will be interned at the Willamette National Cemetery in Portland. He was born Oct. 8, 1921, in Milwaukee, Wis., to Edwin and Helena Freitag Steussy. He married Ethel Hajdu in Switzerland on Nov. 26, 1947. He earned a business degree from the University of Wisconsin before attending the Foreign Service Institute. He also studied Russian language literature at Harvard, which led to a teaching career at the University of Oregon and Portland

State University. He served in the U.S. Army during World War II. Survivors include his wife; two daughters, Edwina Steussy of Madison, Wis., and Suzanne Steussy of Eugene; a son, Frederic of Portland; a brother, Calvin of Chicago; and a sister, Mary Ellen Shannahan of Blanchardville, Wis.

Robin went on his first trip with the club to Mt. Bailey in October of 1981. He did a total of 81 activities with the club, including 3 summer camps. From 1989 on he only did bus trips, the last one being in 1996 to the Portland Manor House. His daughter, Susanne, is an Obsidian member.

## OBSIDIANS, INC

P.O. Box 322, Eugene, OR 97440

Website: [www.obsidians.org](http://www.obsidians.org)

### Board of Directors

President - Jim Duncan  
 Vice President - Jim Pierce  
 Secretary - Laurie Funkhouser  
 Treasurer - Stewart Hoeg  
 Wayne Deeter      Larry Huff  
 Marshall Kandell      Verna Kocken  
 Barb Revere

*Board meetings are held at 6 p.m. on the first Wednesday of each month, except August, at the Obsidian lodge.*

### Committee Chairpersons

Byways-By-Bus.....Liz Reanier  
 Climbs ..... Larry Huff  
 Concessions ..... Kathleen Floyd  
 Conservation..... Pat Bitner  
 Entertainment ..... Laurie Funkhouser  
 Extended Trips..... Jim Duncan  
 Finance .....Stewart Hoeg  
 Lodge Building ..... Doug Nelson  
 Lodge Grounds .....John Jacobsen  
 Librarian/Historian .....Lenore McManigal  
 Membership .....Barb Revere  
 Online .....Wayne Deeter  
 Publications .....Barb Revere  
 Publicity.....Elle Weaver  
 Safety.....Sue Sullivan  
 Science & Education.....Joella Ewing  
 Summer Camp ..... Lana Lindstrom  
 Summer Trips .....Jim Pierce  
 Trail Maintenance.....Peter Green  
 Winter Trips.....Paul Flashenberg  
 Youth.....

## The OBSIDIAN Bulletin

© 2009

Published monthly, except August. Articles, story ideas, letters to the editor and other editorial submissions may be emailed to:

[bulletin@obsidians.org](mailto:bulletin@obsidians.org)

Although email is preferred, submissions may also be sent to:

### The Obsidian Bulletin

P.O. Box 51424, Eugene, OR 97405

For reprint rights, contact above.

### Deadline

for April 2009 Bulletin  
**Saturday, March 28, 2009**

### Assembly/Mailing Team

#### For February Bulletin

Assembly & Mail Manager ..... Lou Maenz  
 Call Manager ..... Vera Woolley  
 Assembly Team ... Tom Adamcyk, Don Baldwin, LaRee Beckley, Yuan Hopkins, John & Lenore McManigal, Don & Barbara Payne

### Editorial Team

Writing & Editorial Staff .... Jean Coberly, Bea Fontana, Janet & John Jacobsen, Joanne Ledet, Barb Revere, Beth Roy  
 Copy Editors..... Jean Coberly & Beth Roy  
 Graphics, Design & Desktop Publishing .....Stewart Hoeg & John Jacobsen





**Conservation Corner:**

# Water Shortage In Oregon? No, It's No Joke

*By Pat Bitner, Conservation Chair*

**N**EARING THE END of a long, dreary winter, as rain beats on the window, the idea of need for water conservation here in western Oregon seems a misnomer. However, many parts of the US are experiencing water shortages, including California to the south. Changing climate due to global warming will bring us a warmer, drier Mediterranean climate. In addition, population growth will put strain on existing water resources. Generally, the biggest use of electricity in municipalities is for treating and distributing drinking water, then collecting, treating and disposing of it after it has been used. Indoor water use for an American family is on average, 70 gallons per person per day - see the chart below. We can do better.

Obsidians residing west of the Cascades are very fortunate, waterwise. We have generally abundant water supplies, being blessed with the Willamette and the McKenzie rivers. This is not true of the land east of the Cascades. All of us are familiar with the headlong development which has proceeded in the Central Oregon area surrounding Bend and Sisters. Two proposed destination resorts drawing from the Metolius River watershed are receiving a great deal of attention: the Metolian Resort and the Ponderosa Resort. Both plans are drawing heated opposition from environmentalists, local residents, the Confederated Tribes of Warm Springs and some influential state leaders - including Gov. Kulonowski.

Sen. Ben Westlund introduced state Senate Bill 30 in the 2007 session, designed to protect against development in the Metolius Basin. Local



*Headwaters of the Metolius Photo by Stewart Hoeg*

cal protection for this iconic Oregon river hasn't happened; Jefferson County officials say they have followed existing rules in approving the Metolian. Future destination resorts would have been banned from the Columbia River Gorge, Crater Lake, Hells Canyon, and Oregon beaches with the passage of SB 30. The bill died in the 2007 legislative session.

The proposed Ponderosa Resort has apparently been approved, although it is way larger than the Metolian. The two resorts could combine 2,500 home sites and two golf courses located within a few miles of the headwaters of the Metolius. Those of you who know the Metolius would agree that it is a natural wonder. Water gushes from the ground, fed by a series of natural springs. It's a fabled fishing river, sacred for Native Americans. A newsletter from the Bend area real estate industry discusses the existing destination resorts in the Bend area - and notes there are presently 30 golf courses. It asks, "Do we

need another golf course?" Now, with realtors posing this question, there is a sea change in attitude. The Bend area has been built on headlong development without apparent thought to water needs in the near, let alone distant future in a high desert environment.

Ref: *Bend Bulletin*, June 6, 2007, Erik Kancler; Active Rain Corp. 2009, Real Estate Blog; *U.S. Water News Online*, June 2007

**\*\* WATER ACTIVITIES**

INSIDE ACTIVITY	GALLONS USED (conventional)	GALLONS USED (water saving*)
Toilet Flushing	5-7 gals per flush	1½-3½ gals per flush
Shower (water running)	7-10 gals per minute	2-4 gals per minute
Bath (full tub)	36-50 gals (conventional)	30-40 gals (conventional) 40-80 gals (whirlpool)
Laundry (full load)	60 gals top loader	42 gals top loader
Dishwasher	15 gals normal load	7½-10 gals normal load
Dish washing by hand	30 gals tap running	10-20 gals tap running
Shaving	20 gals tap running	2-5 gals tap running
Brushing Teeth	10 gals tap running	2-3 gals tap running
Washing Hands	2 gals tap running	1-2 gals tap running

\* The rate of consumption for water-saving devices varies significantly.

**\*\* AVERAGE CONSUMPTION/DAY PER PERSON = 70 GAL**

# A Rich Heritage

(Continued from page 1)

work of which we feel capable. Our work involves maintaining trails and shelters, replacement of missing or damaged signs, and the re-construction or new construction of trails.

I find that there is a great deal of satisfaction derived in walking a trail that I helped build and maintain.”

Helen died January 15, 1998 at age 87. She joined the Obsidians in 1937, chaired many committees and was President in 1973-74. She completed 700 activities in the 62 years she was a member. She was nominated by the US Forest Service as “Volunteer of the Year ” in 1986 (from Feb. 98 *Bulletin*).

## **Jerold Williams: Project Coordinator, ETPCT**

Jerold said, “Under the flag of the Sierra Club and with help of State Parks Department, I worked for 21 years building trails to help link existing trail segments. The Eugene-to-Pacific Crest Trail was dedicated on June 3, 1995 at the beginning of the trail near the Ferry Street Bridge.

Jerold’s trip reports on our website highlight the building of the trail. He wrote in 1987: “The concept of a continuous 74-mile hiking route from Eugene to a junction with the Pacific Crest Trail near Waldo Lake is large and exciting. At times over the past 8 years it has seemed a long way from being realized. Keeping at it is now paying off as we are achieving increasingly longer sections of the completed trail. A crew of 12 made the connecting link on Sept. 12.”

## **Larry Cash, 1987-88 Trail Chair**

Larry was also President of the Pacific Trail Association from 1986-1993. He worked on many trail projects. In April 1994, he awarded his Pacific Crest Trail System marker to the club. It still hangs on the Lodge wall.

## **Jane Hackett, Volunteer**

Jane worked on the Bobby Lake Trail on the PCT. She said, “Our club adopted this trail and made a commitment with the Forest Service to maintain that section of the PCT.”

## **Velma Shirk, 1992 Trail Chair**

“Our first project in January 1992 was to re-route a 400-foot section of the South Willamette Trail that had been logged over...We hooked up with Sue Baker at the Lowell Ranger District for our projects: clearing, building water ditches, and trail building.”

## **Ray Jensen, 1993 Trail Chair**

From the February 1993 *Bulletin*: “Yes, everyone can participate....All of us love the outdoors: here is your chance to put that love into action. Old or young (and in-between), strong of back and will, calloused hands or office smooth, neophyte or trail expert—come and discover the joys and rewards of Club trail maintenance.”

## **Royal Murdock, 1994 Trail Chair**

“We did four trail maintenance projects with the Forest Service. The project I remember the most is when a conglomeration of people, some with llamas and bicycles, helped to haul gravel for the Salt Creek Trail.”

## **Dave Predeek: 1998-02 Trail Chair**

“The work we did was entirely in the McKenzie Ranger Dis-

trict in the Mt. Washington Wilderness and at Castle Rock. We worked on trails that I was familiar with such as Scott Mountain. We did raking, picking up limbs and trimming brush. On one trip we worked in the vicinity of Robinson Lake. On another we worked at Hand Lake and beyond.”

**Continued next month.** We welcome any contributions about *Obsidian Trail Maintenance*. Personal anecdotes are needed.

---

# John Cecil Remembers

*Editors Note: In addition John’s trail maintenance activities, he was Editor of the Bulletin for 17 years, retiring in 2005.*

**H**ELEN SMITH WAS THE OBSIDIANS’ hiking trail advocate and watchdog in the late 1970’s and 80’s; she had a close personal association with the Forest Service. Threats of trail closures due to proposed logging sales would produce lengthy reports in the *Obsidian Bulletin*. She was later joined in her lone trail maintenance efforts by Mary Bridgeman and a very young Peter Cecil.

A Trail Maintenance Committee was authorized by the Board and trail maintenance trips increased in number and complexity through the 1980s. Work crews traveled to the McKenzie, Blue River and Lowell Ranger Districts. Trips always had the fullest cooperation of, and sometimes active involvement with, Forest Service personnel.

Obsidian “Field Days” were instituted in 1984 and were repeated several times. NO trips or climbs were scheduled on these week-ends, and comparatively large turnouts of members were usually achieved.

Projects worked on during these years (besides frequently clearing blow down after wind storms) included:

**Hardesty Mountain** trailhead was rebuilt (steps, drainage ditches, gravel) and an extensive re-route was completed.

**Deception Butte** trail saw multiple trips to construct a creek crossing using a log helicoptered to the site.

**Rebel Rock** and **Rebel Creek** trails received a new log bridge crossing and trailhead relocation work.

**Ash Swale Shelter** and its long corduroy trail saw multiple work visits in “various weather conditions” (!!).

On all trail trips safety was the number one concern, and a maintenance guide was developed. The Forest Service provided all tools needed, and gave instruction in chainsaw use.

Carpenter Mountain, Olallie, and Little Cowhorn Mountain fire lookouts received maintenance and painting work. A joint trail trip with the Chemeketans was successfully carried out on Iron Mountain. The Eugene-to-Pacific Crest Trail received regular attention by trail builders led by Jerold Williams, and Gary Kirk had his own trail construction franchise on Old Baldy in the Coburg Hills.

Camaraderie was invariably high on trail trips, and mandatory coffee stops at Vi’s Pies (McKenzie) and Pleasant Hill DQ on the way home were always popular. Trail Maintenance T-shirts (after ten trips) helped increase the interest.

Yes, those were the days...

*John Cecil, Trail Maintenance Chair, 1986*



# Local Wildflower Displays



**W**E ASKED MEMBER **BEKI RIES-MONTGOMERY** to share some of her wildflowers drawings. Last spring Beki spent an afternoon at Mt. Pisgah Arboretum painting wildflowers in her journal. Above are two pages from that journal which she is sharing with us. Beki's wildflowers are a reminder of the treasures to be found in the next few months when hiking Mt. Pisgah, Ridgeline, Spencer Butte, and Skinner Butte trails.

For descriptions of flower displays on Mt. Pisgah and Spencer Butte, check out the online article: "Spring and Summer Wildflower Displays Within Driving Distance of Eugene, Oregon," compiled by Rhoda Love, Gail Baker, Tanya Harvey, and Charlene Simpson. [http://www.emeraldnpso.org/PDFs/Wildflower\\_Hikes\\_Aug03.pdf](http://www.emeraldnpso.org/PDFs/Wildflower_Hikes_Aug03.pdf) The information courtesy of Emerald Chapter of the Native Plant Society of Oregon: [www.NPSOregon.org](http://www.NPSOregon.org)

Other featured trails are: Mary's Peak, Smith Rock State Park, Kentucky Falls, Columbia Gorge, North Shore Lookout Point Reservoir, Tire Mountain, Cone Peak and Iron Mountain, Patterson Mountain, Tidbits Mountain, Horsepasture Mountain, Bohemia Mountain, Blair Lake Meadows, Moon Point Trail, Grasshopper Mountain Meadows and Cupit Mary Meadows. The authors give the best months for wildflower displays, names of the flowers, and driving directions. It is not too late to volunteer to lead one of these trips. Just email [summertrips@obsidians.org](mailto:summertrips@obsidians.org).

*Editor's Note: If you are viewing Beki's watercolor above in a printed grayscale edition of the Bulletin, we would suggest you try to access the Bulletin online and view it in spectacular color.*



## Welcome!

**New Members**

**RIVERNIDER, KEN** (Active)  
140 Hamilton Ave., Eugene 97404  
688-4560

**Reinstated Members**

**STEUSSY, SUZANNE** (Active),  
2405 Mission St., Eugene 97403  
344-8074 [suzannesteussy@yahoo.com](mailto:suzannesteussy@yahoo.com)

# BOARD NOTES

**March 4, 2009**

**By Laurie Funkhouser, Secretary**

President Jim Duncan called the meeting to order. Board members present: Laurie Funkhouser, Jim Pierce, Marshall Kandell, Verna Kocken, Wayne Deeter, Larry Huff, and Stewart Hoeg. Others: Paul Flashenberg, John Jacobsen, Jan Jacobsen, Joella Ewing, Lenore McManigal, John McManigal, Ed Lichtenstein, Elle Weaver, Doug Nelson, Sue Sullivan, Pat Bitner, and Lana Lindstrom.

Treasurer's Report: Bills approved .

## COMMITTEE REPORTS

Summer Trips (Jim Pierce): The Summer Trips Committee met on Feb. 16. Everyone has plunged into their part of the Committee activities. We have started to contact potential Summer Trips Leaders. We expect to have our preliminary schedule by March 15. The focus is April-May-June with some outings throughout the rest of the season. There is a leaders training class scheduled for Thursday, May 7 from 7 to 9 pm at the Lodge.

Winter Trips (Paul Flashenberg): There are now 57 trips on the schedule. 13 February trips. 64 members, 14 non.

Climbs (Larry Huff): Developed and distributed a promotional flyer for Climb School. Registration for Climb School is now active. The Climbs Committee has a preliminary climb schedule with 17 climbs. The climb schedule will be official and available on the website April 1.

Trail Maintenance (Peter Green): February 28, 2009, Spencer Butte, planting some 150 ferns and false Salomon seal along a section of repaired trail on the south side. We had 5 members and 3 non-members attend. Our next outing will be Saturday March 28th at 9am

By-Ways-By-Bus (Liz Reanier): The bus rally was held on February 22, 2009 and was attended by 45 Obsidians and friends. None of the trips is sold out. The first bus trip of the 2009 year was the Eagles 'N More trip with 21 Obsidians and 10 guests.

Summer Camp (Lana Lindstrom): Rally at the March 27 potluck. The registra-

tion form is in the upcoming Bulletin. John Jacobsen enhanced the data base program for registration and Ann-Marie Askew did a great job writing the Camp Booklet. Scott and Mandy Gilbert will be the cooks again; the menu is finalized.

Conservation (Pat Bitner): The February SciEd speaker, Carolyn Stein of BRING Recycling, was arranged by Conservation Committee. 20 attendees.

Entertainment (Laurie Funkhouser): Don Steely and Susie Hanner informed the Club of the benefits of the Stove Team International project using the "stove" to heat up tortillas. Attendance: 34 for the potluck and 39 for the presentation with \$33 collected. March 27<sup>th</sup> - Summer Camp Ishi rally.

Science and Education (Joella Ewing): 16 people attended the Bring Recycling SciEd. \$14 was collected. March program will be Obsidians Bill Aspegren, Lyn Gilman-Garrick and Royal Murdock on their bike trip from the Pacific to the Atlantic.

Membership (Barb Revere): 1 new member approved and 1 reinstatement. The current club membership is 541.

Online (Wayne Deeter): The contacts page has been updated, and now includes all standing committees. Email addresses have been added for those committees which didn't already have one. More than 25 years of Bulletin back-issues are now online.

Library/Historian (Lenore McManigal): All trip reports have been recorded.

Lodge Building (Doug Nelson): Rented once in February. \$100.00 rental fees. We have a water leak. Initial investigations indicate (rain?) water is entering at or near the water inlet pipe on the west wall. Investigations and repairs to continue ASAP.

Lodge Grounds (John Jacobsen): A mini grounds work party Feb 16. A little more wood has been split and another cord of wood sold. A work party in conjunction with the Lodge Building Committee will be held March 7.

Safety (Sue Sullivan): The safety committee is taking on the task of updating the first aid kits.

## OLD BUSINESS

Car-pooling By-Law Language: The Board revisited and approved the tabled motion on Carpool Expense Sharing.

Obsidians Survey Results: Ed Lichtenstein provided additional summaries regarding the recent survey.

## NEW BUSINESS

Renewal CVALCO Membership: Elle Weaver informed the Board that CVALCO offers Marketing Packages/Benefits to members and focused on the Relocation, which the Club did subscribe to, and the Tourism. All packages provided website access and the group is currently working to improve the quality of the website information. CVALCO is changing its style with a new logo – Eugene, Cascades & Coast. – Real Adventures. In addition a 2<sup>nd</sup> office is being opened in the Gateway area. The BOARD APPROVED membership with CVALCO with the Relocation and Tourism packages (a total of \$200) with 1 Board member abstaining.

On-line trip signup: Jim Duncan announced that John Jacobsen and Wayne Deeter are moving forward in developing the technical details for an on-line trip signup. One of the catalysts to move forward in developing the on-line signup was information indicating that over 90% of the leaders and participants use the internet. As the "research and development" moves closer to implementation, an article will be placed in the Bulletin to inform members. In addition, an Ad Hoc Committee will be assembled to assist in the transition.

## ANNOUNCEMENTS

President Duncan noted that the Club received the annual membership to Federation of Western Outdoor Clubs (FWOC) in the amount of \$50.00. The BOARD APPROVED unanimously continued membership.

A last minute item was received by the Club from EWEB relating to a water upgrades to Spring Blvd./43<sup>rd</sup> area. Will review to determine if the Club will be directly affected and if action needs to be taken.



# TRIP REPORTS & OTHER ACTIVITIES



## Hikes

### Pre's & River Trails

February 2, 2009

Leader: Marshall Kandell

Photo: Jim Pierce

4.5 miles, 0 ft. (Easy)



**A**LTHOUGH THE TEMP WAS IN THE VERY LOW 30s, the sun was out and shining encouragingly upon our venture. From the duck pond in Alton Baker Park, we set out on Pre's Trail and had only reached Autzen Stadium when we veered off our set course to see the new Kilkenny Baseball Field. Enroute, we looked in on the Moshofsky Center and passed the Casanova Center as we circled Autzen. The power had just come on for the new baseball field and the lights were getting their first test. Bleachers were being erected for the first season, due to get underway this month. One of the construction crew took time to fill us in on everything and we moved on, patting ourselves on the back for deciding to make the detour, which added about a half-mile to our hike. Instead of backtracking, we went by the BMX track and then cut in along the waterway (and the magnificent homes backing upon it), back to Pre's Trail and the balance of our planned route. Although this would seem to be familiar territory, several of our group had never before seen the U of O facilities or been on portions of the trail. On the return loop through the Whilamut Natural Area, we stopped to check out a large cairn that had recently been built, both to provide housing for a variety of reptiles and small animals and to illustrate the value of restoring some of nature's landscape. Enjoying this most interesting walk (which included sightings of a great blue heron and an osprey in a tree playing with its still squirming lunch) were members Jim and Sharon Duncan, Marshall Kandell, Jim Pierce and Ruth Romoser; and prospective member Ken Rivernider.

### Rexius Trail

February 5, 2009

Leader: Marshall Kandell

4 miles, 50 ft. (Easy)

**EASY WALK** up one side of Amazon Creek and down the other, with an optional detour at the end to the Hideaway Bakery. Participants were members Mari Baldwin, Dick Hildreth and Marshall Kandell; and nonmember Ken Rivernider.

### Alton Baker to Island Park

February 9, 2009

Leader: Marshall Kandell

5 miles, 0 ft. (Easy)

**BRRR.** Hard to get your engine started on such cold mornings. Not the car's engine...mine! But start we did, following Pre's Trail from the duck pond. Once again, we were greeted by a great blue heron. Is it always the same one? Crossing into Springfield, we took a short rest stop at Willamalane Adult Activity Center (please, NOT a SENIOR center!). Then, we followed on surface streets to the Springfield bus station and boarded the Em-X for the return trip to Agate and our finishing stroll across Autzen Bridge and back to the duck pond parking lot...the final stretch in bright sunlight! Once more, there was no rain on our parade. Marching along were members Myron Cook, Marshall Kandell, Ginny Reich and Ruth Romoser; and, on his third qualifying hike, Ken Rivernider.

### North & South Shasta Loops

February 12, 2009

Leader: Marshall Kandell

4 miles, 0 ft. (Easy)

**ALTHOUGH THE WEATHER WAS A BIT NIPPY**, the forecasted freezing fog never materialized and from our starting point at Spring and Firland we could see LCC, Mt. Pisgah and distant Cascade peaks. We proceeded clockwise, down Woodson and South Shasta Loop and up the challenging North Shasta Loop. After concluding the hike, we decided to convene a world affairs conference at the Hideaway Bakery. Although we made some progress, it was determined that many more bakery sessions were required. Hiker/conference delegates were members Myron Cook, Marshall Kandell and Ed Lizewski.

### Duck Pond to Pre's Rock

February 16, 2009

Leader: Marshall Kandell

6 miles, 300 ft. (Moderate)

**A PRESIDENT'S DAY HIKE TO PREFONTAINE'S** memorial seemed appropriate. Again, we started out in chilly but clear weather. From the duck pond, we took the river trail to Autzen Bridge (the river seemed lower than we could ever remember), past the construction of the UO athletic academic center and the huge pits being dug that will eventually hold the new Matt Court and up 15th to Hendricks Park, where our group split up for a bit. At first, Ginny Reich took us on a "short cut" that wouldn't

be as steep as the course we were on. Hah! Then, she and her followers took the high road and I led my minions on the low road and we wound up at the rest rooms at the same time. From the rhody garden, we followed Skyline Blvd. to the spot where Pre lost control of his convertible...and his life. We followed Birch back down to Fairmont, enjoying the magnificent view of Alton Baker Park way below and, again, acceded to Ginny's urging to take 17th down instead of 19th (thereby eliminating the seductive aromas that emanate from Eugene City Bakery). We stopped for refreshments in the EMU's Fishbowl and then proceeded through the campus and across Franklin to the South River Trail and across the DeFazio Bridge back to the duck pond, finishing in bright sunshine. Hikers included members Myron Cook, Jim and Sharon Duncan, Marshall Kandell, Ginny Reich, Ken Rivernider (membership application in the mail!), Ruth Romoser and Martha Welches; and nonmember Nancy Sprague.

## North Fork of Middle Fork Willamette

February 15, 2009

Leader and Photo: Chris Stockdale

7 miles, 200 ft. (Moderate)



**SOME OBSIDIANS ARE TERMINALLY OPTIMISTIC** and so are inclined to ignore inclement weather forecasts. Some lucked out again on Sunday, Feb. 15 when they drove up to the Westfir covered bridge parking area to tackle the trail along the North Fork of the Middle Fork of the Willamette River. [Note: let's have a contest to shorten that name and submit it to the Forest Service.] Blue skies predominated and the predicted rain and cold winds were nowhere to be experienced. Thanks to some recent showers, the foliage along the trail was a vivid green and sparkling where it caught the sun, the river was cascading in torrents, and a few brave flowers were visible by the trail's side. Occasional muddy patches where the mountain bikers had ridden didn't faze the group. Lunch was eaten atop a rise overlooking the river before the group reluctantly headed back to make sure one hiker would be back in Eugene by mid-afternoon. The group also appreciated the later start of 9:00 am. Relishing the taste of spring were Obsidians Lynda Christiansen, Janet Jacobsen, Sue Meyers, Susan Wanser and leader Chris Stockdale, accompanied by a visitor from the Bend area, Larry Pennington.

## Duck Pond to Skinner Butte

February 19, 2009

Leader: Marshall Kandell

4 miles, 0 ft. (Easy)

**FROM THE ALTON BAKER PARK** duck pond we went east on the South River Trail to Autzen Bridge, then west on the North River Trail to Campbell Community Center, where we made use of their indoor facilities and met a couple of Obsidians who were there for various activities. Resuming our hike, we went up the trail to Skinner Butte summit and checked out the view of the city and surroundings, which were somewhat obscured by low clouds and haze that hadn't burned off yet. We returned via the DeFazio bike bridge, going by EWEB's fountain plaza, where Jim Pierce told us all a tall story about Native American maidens and dancing waters. In addition to Jim, hikers included members Myron Cook, Marshall Kandell, Ed Lizewski and Ken Rivernider; and nonmember Nancy Sprague (whose late father was an Obsidian) on her second club hike.

## McKenzie River Trail, Belknap Hot Springs

February 24, 2009

Leader: Barb Revere

8.2 miles, 200 ft. (Moderate)

**WITH FORECASTERS CALLING FOR A BIG STORM** in the afternoon, we chided ourselves for heading out to hike in the first real rainstorm in over six weeks. The grim forecast did whittle down the original signup total from 21 to eight and we were determined to enjoy the day: we outdid ourselves on that score. We were surprised at the reasonable temperatures and all were well prepared for the wet, and we re-learned that in a deep forest like we traveled today, the trees keep a lot of the rain to themselves and spare us who walk beneath. We all stayed pretty dry, until we arrived at Belknap, where most of us stripped to swimsuits and spent a lazy 45 minutes enjoying the geothermally heated waters of the pool. A quick lunch and we were back on the trail, in the rain, and back to the ranger station to await our chariot, the #91 LTD bus, for the 50-mile ride back into town. The trail is in reasonable condition for this time of year, but expect a lot of blowdown, most of it small, and not much mud--surprise! Our GPS expert tracked the hike at nine miles. My gratitude to those eight who 'stuck with it' and remained cheerful throughout (all Obsidians, by the way). Members: Dan Christensen, Myron Cook, Walt Dolliver, Clara Emlen, Pat Hutchinson, Janet Jacobsen, Barb Revere and Elle Weaver.



## Snowshoe Trips

### Maiden Peak Ski Shelter

January 31, 2009

Leader: Matthew Bell

12 miles, 900 ft. (Difficult)

**IT WAS CLOUDY AND DRIZZLY** in Eugene and the surrounding area when we left the South Eugene H.S. parking lot. However, the weather around Willamette Pass couldn't have been nicer. We traveled up the Pacific Crest Trail from Willamette



Pass by the Rosary Lakes to the Maiden Peak Ski Shelter. The trail was pretty crusty up to Maiden Saddle but we were able to break trail from the saddle to the cabin. We had started out from Willamette Pass at about 8:00 in the morning and made it to the cabin by about 11:00. We enjoyed a leisurely lunch inside the cabin then headed back to Willamette Pass. Participants: members Matthew Bell (leader), Steve Kuhn, Dave Jensen, Elle Weaver, and nonmember Erik Endrulat.

### **Fawn Lake Loop**

**February 7, 2009**

**Leader: Brian Hamilton**

**Photo: Roy McCormick**

**7 miles, 1,000 ft. (Difficult)**



**THIS TRIP WAS ORIGINALLY SCHEDULED** as a cross country ski trip but recent warm weather and weeks of very little fresh snow compelled us to use snowshoes on this loop. Actual conditions were not too bad, especially above about 5,500' where we encountered firm fresh snow and warm sunshine (and two skiers headed up Redtop Mountain). Our loop took us to Pretty Lake where we stopped for lunch, and then in a clockwise direction past Fawn Lake and back to our starting point. The icy patches that we encountered in the trees during the descent to the snopark validated our decision to use the foot paddles. This was a stellar day in the backcountry! Upon our return to Eugene we learned that the valley remained shrouded in fog all day and had been much colder than in the mountains. Many thanks to Obsidians Larry Huff, Roy McCormick, and Suzanne Steussy for helping to make this a very enjoyable winter trip. Thanks also to Roy for preparing most of this report!

### **Potato Hill**

**February 7, 2009**

**Leader: Scott Hovis**

**5 miles, 1,000 ft. (Difficult)**

**THE CLEAR DAY** allowed us to see seven major Cascade peaks. The snow was poor in that it was crusty and packed, but good in the sense that it was easy to walk on, and we made good time. The loop we hiked starts right off with the major part of the elevation gain, but after a quick descent the loop is fairly level. Most of the trail is on logging roads so you know that it has been made with an even grade. Members: Scott Hovis; nonmembers: Jolynn Fabrino, Craig Hovis, Janice Suratt and Jackie Wagner.



## **Ski Trips**

### **Maklaks Cross Country Ski & Snowshoe**

**February 1, 2009**

**Leader: Lana Lindstrom**

**6 miles, 200 ft. (Moderate)**

**IT WAS A GORGEOUS DAY** in both the valley and in the mountains - sunny, about 35 degrees. The snow was initially crusty, but as we gained a little bit of elevation, it turned to velvet. There were six snowshoers and six cross country skiers. Lunch was on a slight knoll in full sun which couldn't have been more perfect. After lunch, the skiers continued up the trail for about 15 more minutes and then turned around. Coming back down the ever so slight incline, barely needing to pole, was very, very fun. Enjoying a fabulous day in the snow were members Jane Allen, Anne Bonine, Lynda Christiansen, Brenda Kameenui, Sue Myers, Carol Petty, Suzanne Steussy, Chris Stockdale, Nancy Whitfield and leader Lana Lindstrom; and nonmembers Dwight Golann and Diane Pergamit.



## **Trail Maintenance**

### **Spencer Butte Trail Maintenance**

**January 24, 2009**

**Leader: Peter Green**

**3 miles, 0 ft. (Easy)**

**FOUR OBSIDIANS AND TWO PARKS AND OPEN SPACES EMPLOYEES** met at 9:00 am on January 24th to plant ferns and trees on the northside trail of Spencer Butte. The planting took about two hours and will really help to re-vegetate the area around the new trail. Members: Matt Bell, Peter Green, Janet Jacobsen and Ed Lizewski.

### **Mt. Baldy**

**February 4, 2009**

**Leader: Janet Jacobsen**

**5 miles, 500 ft. (Moderate)**

**SIX OF US HIKED** the new graveled trail from the end of Spring Blvd. to the top of Baldy. Re-routed and designed with many switchbacks, the trail is an impressive replacement of the steep, rutted path. From the new bench on top, we enjoyed the sun and the view above the clouds. We stopped at the trailhead kiosks - Baldy, Dillard, and Fox Hollow - to post an Obsidian schedule. We also picked up litter at the parking lots. Moshe and I rigged my hiking poles to carry a large black bag of garbage down Dillard Road. Fortunately, two hikers at the Baldy parking lot offered to transport the garbage. The trip took around three hours. Members: Janet Jacobsen, Moshe Rapaport, Ruth Romoser, Susan Sanazaro and Marian West; and nonmember Susanne Steussy.

# UPCOMING

## Upcoming Extended Trips

### Frenchglen & Malheur National Refuge

May 8-10 , Fri-Sun

Leader: Marianne Camp (221-1866)

Cost: \$140 - \$240 depending on accommodations

**OUR VERY OWN** Rick Ahrens will be participating on the trip as the resident naturalist. The focus of this trip is birding; bring your binoculars!

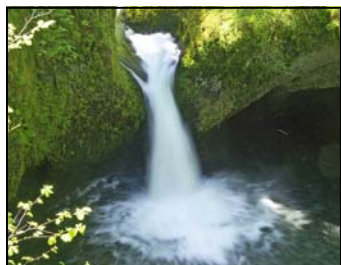


### Columbia Gorge Waterfalls & Wildflowers

May 27-29, Wed-Fri

Leader: Lana Lindstrom (683-1409)

Cost: \$145 Members, \$155 Non Members



**HAVE YOU ALWAYS** wanted to explore the waterfalls in the Columbia Gorge or hike Dog Mountain, but just haven't found the energy to plan an overnight trip? Here's your opportunity to do so with other Obsidians.

### North Cascades Hike/Car Camp

Aug 19-23, Wed-Sun

Leader: Jim Pierce (344-1775)

Cost: \$55 Members

\$60 Non Members

**GET AWAY** to the North Cascades of Washington state and enjoying an alpine adventure.



Trips are filling up. Contact the leader for the latest information or contact: [extendedtrips@obsidians.org](mailto:extendedtrips@obsidians.org)

For more detail, see last month's Obsidian *Bulletin*, Page 11.

## Upcoming Bus Trips



### Visit the Governor's House & the Capitol

Friday, March 20

Leader: Mary Ellen West

Cost: \$40 Members, \$42 Non Members

Reservations & checks to: Sharon Cutsforth 746-4929

**WE WILL VISIT THE GOVERNOR'S** house, Mahonia Hall, in Salem. Greeting us will be volunteer guides, and hopefully, the friendly family dog. We will start our visit at the capitol with an introduction by a tour guide and time to explore the newly repaired and refurnished building. We will also have lunch (your cost) in the capitol restaurant. Our next stop is the Mission Mill Museum which, in addition to regular exhibits, has a display called "facing Statehood," designed to give visitors a glimpse of Oregon's origins. Finally, we will visit the historic Elsinore Theater in downtown Salem where we'll enjoy a Wurlitzer organ concert.

### Thompson Mills - Horner Museum 'N More

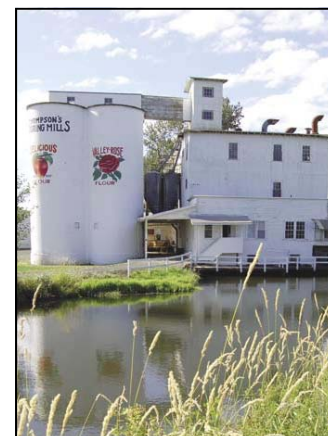
Tuesday, April 21

Leaders: Mary Ellen West, Ray Jensen

Cost: \$41 Members, \$43 Non Members

Reservations & checks to: Sharon Cutsforth 746-4929

**WE WILL START OUR TOUR** at the Thompson Mills, Oregon's oldest water powered mill. This is a State Heritage site that has been beautifully developed by Oregon State Parks (your lottery dollars at work). We'll cross the valley to the Finley Refuge to visit the newly restored Fiechten House, originally built in 1855. There are other historic buildings there as well, including one from the Cheadle family. Our own Mary Lee Cheadle will be our guide. Next we will go to the Gathering Together Farm in Philomath for lunch (your cost), and to purchase, if you like, organic vegetables grown there. The last history stop will be the Benton County Museum for a look at the Horner History collections. This is the first exhibit in many years. An assortment of items are on view in the main building and as a special treat, we can see the new storage building where nearly 60,000 items are housed. On the way home, we will stop at Hazelnut Hill for ice cream and shopping.





# 2009 SPRING CLIMB SCHOOL

www.obsidians.org



The Obsidians and Eugene Mountain Rescue would like to invite you to participate in their annual spring climb school. This is an entry level mountaineering class with an emphasis on providing the basic skills needed to climb safely with a group in alpine mountaineering environments—where travel may involve ascending glaciers or negotiation of steep rock. It is recommended for new climbers who would like to participate in any “technical” or roped climb or those who would like to refresh their climbing skills. Prerequisites for the course include being in reasonably good physical conditioning; being age 16 or older (or at least 13, if accompanied by a parent or other responsible adult).

April 2 (classroom), April 4/5 (field practice)  
April 16 (classroom), April 18 (field practice)



**\$50**

(members of either organization)

**\$75**

(non-members/general public)

Info: [climbs@obsidians.org](mailto:climbs@obsidians.org) / 1.541.868.5391

## OTHER ORGANIZATIONS' UPCOMING



### Nearby Nature

#### Nearby Nature Quest: Nesting Neighbors

**Saturday, March 14, 10-noon**

Learn all about our fine feathered friends on a family-paced hike and make a birdhouse to take home! Meet at the Alton Baker Park Host House (next to community gardens). \$2/person, \$5/family. Small extra fee for materials.

#### Spring Break Daycamp: Tracks, Trails, and Tales

**March 23-27, 8:30 am-3:30 pm**

Learn all about Kalapuya life and lore. Track animals, hike to the Talking Stones, hear stories, go on scavenger hunts, make drums, and visit the UO Natural History Museum! Ages 6-9. \$170 members/\$200 non-members. Register: 687-9699.

#### No School Day Adventure: Growing Up Green

**Friday, April 10, 8:30 am-3 pm**

Find out who's growing up green, from the wackiest wildflower to the tallest tree. Learn how seeds travel, get down in the dirt in our garden, discover nature's way with waste, and enjoy scavenger hunts. Ages 6-9, maximum 12 kids. \$30 members/\$35 non-members. Nearby Nature Yurt.

#### Nearby Nature's Egg Walk!

**Saturday, April 4, 2-5 pm**

Celebrate the egg-straordinary assortment of critters who hatch out of eggs—from ducks to dragonflies! Meet costumed critters on a special guided hike in Alton Baker Park, check out live critters from the Oregon Herpetological Society, enjoy crafts, a great raffle, and more. Each hike lasts an hour. FREE for members, \$5/non-member. Pre-registration is required: 687-9699.

*(Continued on page 12)*

## Nearby Nature Upcoming

(Continued from page 11)

### Nearby Nature Summer Daycamps!

Do your kids like exploring, catching bugs, doing outdoor science projects, riding bikes, telling stories, or creating nature crafts? Then they should participate in our summer daycamps program! Kids from 3 to 11 years old are invited to enroll in week-long camps that feature small classes, experienced educators, half/full day options, and topics ranging from bugs to bikes. All camps are held outdoors in local parks. Camps start June 22nd and go through the end of August.

EWEB-sponsored scholarships are available for conservation-themed camps. A complete list of Nearby Nature camps, costs, and scholarship information will be available in late March.

For information: [www.nearbynature.org](http://www.nearbynature.org) or call 687-9699.



## Mt. Pisgah Arboretum

### Explore Nature with Kids!

Children spend so little time out in nature, yet these experiences are vital to their health and the health of our planet. If you have a couple of mornings to spare this spring, join Mount Pisgah Arboretum's team of nature guides and reconnect kids with the natural world! The Arboretum's guides take 1800 elementary school students out into the woods every spring, exploring the plants and animals that inhabit the forests, meadows, and waterways along the Coast Fork of the Willamette River.

Guides are needed one morning per week, April 20-June 11. Training is free and includes all you need to know to lead a small group of K-5 grade students on a nature hike: Local Natural History, Outdoor Teaching Skills, Storytelling and Effective Group Management. An orientation will be held Wed. March 18, 7-9pm at Morse Ranch Family Farm. No experience required.

For more information or an application, call the Arboretum at 747-1504, [mtpisgfr@efn.org](mailto:mtpisgfr@efn.org).



## Natural History Society

### Green Gold: West Eugene's Grassland Communities

Come enjoy and learn from Emily Steel, a vibrant speaker and passionate restoration ecologist in our community. She will be speaking March 20, 7:30PM, in Room 100, Wil-

lamette Hall, UO campus at the monthly meeting of the Eugene Natural History Society. The public is invited, always free of charge. For more info: 344-3327.

## Geotourism Project

Nominate your favorite place in the Central Cascades of Oregon and Washington. The Central Cascades Geotourism Project will select 150 sites to be featured in the Geotourism Map Guide which will be coproduced with the National Geographic Society. See [www.thecentralcascades.com](http://www.thecentralcascades.com) to vote. Deadline March 29th.



## WREN

### A Tale of Two Rivers - March 22 - 2 p.m.

Janet Brown will discuss the important role that the Deschutes and the Willamette rivers have had on Oregon's history and culture. Brown shows how the geologic formation of these two critical waterways was influenced by, and in turn sculpted, human interaction. Brown's fascination with hydro-geology is framed by her twenty-five years of experience with the U.S. Geologic Survey.

The program is free and will be at the Eugene Downtown Public Library, 100 W. 10th Ave. For more information contact Holly McRae at 683-6494.

OCH is an independent, nonprofit affiliate of the National Endowment for the Humanities that is dedicated to the belief that knowledge and ideas are fundamental to the health of our communities. More information about OCH's programs, including "Women Photographers in Oregon" and "Out of the Ordinary Oregon" which will also be at the Eugene Public Library in March, can be found at [www.oregonhum.org](http://www.oregonhum.org).

### Wetlands & Weaving for Wee Ones - Mar 28 & Apr 25 Session 1 - 9:30 a.m.-noon, Session 2 - 1-3:30 p.m.

Children of all ages can participate in this one day educational premier about gathering and weaving of Native American Baskets from native wetland plants. Ethnobotanist Nan MacDonald will begin each session with a "walk a bout" in the wetlands to explore, discover, and learn about the wild native trees & plants used for making baskets. Participants will then return to the yurt to make a simple traditional Abenacki Ash & Sweetgrass keepsake. The event will include a presentation representing the cultures of the Abenacki, Mohawk, and Ojibway people. Each session is limited to 20 children and registration is required. Contact Holly McRae at [hmcr@wewetlands.org](mailto:hmcr@wewetlands.org) or 683-6494. Children must be accompanied by an adult. Suggested donation: \$2/WREN member and \$4/non-member. Meet at the West Eugene Wetlands Yurt, 751 S. Danebo Ave. in Eugene.

(Continued on page 13)



# Put Some Spring in Your Step

**Tue., Mar. 17 – Pisgah Oak Restoration – Hike, moderate.** Those of you who make frequent visits up Pisgah may have noticed the plethora of projects ongoing at Buford Park. On this hike, straight up to the 1500 ft. summit, you'll get a chance to learn about the restoration of the park's oak savannah. Janet Jacobsen leads this trip with help from Jason Blazar. If you have never been up the summit trail, it climbs 1000 ft. in little over a mile. Boots are appreciated by all who have the foresight to wear them –especially on the way down. Details Page 15.

**Tue., Mar 24 – Skinner Butte & eagles' nest – Hike, easy.** Each spring, Margaret and Dick Essenberg keep a close eye out for the return of their close neighbors, the bald eagle pair of Skinner Butte. They have mapped out the best viewing points all along the short walk in the park and up the butte. Bring binoculars and revel in our good fortune to have these part-time residents raise their chicks a short quarter-mile from downtown.

**Sun., Mar. 29 – Elijah Bristow State Park – Hike, moderate.** This will be somewhat new territory for your leader (me) so we'll explore together some of the 12 miles

of trail and 850 acres of this lovely state park near Lowell. This close-to-town, large natural area looks like good bird habitat, so bring binoculars



*Springtime on Pisgah*

and a bird guide if you like. The hike will be about six to eight miles and is practically flat.

**Mon., Mar. 30 – Washburne & China Creek – Hike, easy.** Out on the coast, just north of Florence, is an area that Obsidians favor with their company several times a year. No two leaders lead the trip alike and this one, led by Marshall Kandell, is a favorite. Start on the beach, pick up rocks and shells; throw some back to preserve area; gawk at birds and strange critters in tide pools; scurry up the Hobbit Trail watching for hobbit 'sign'; cross 101 to beautiful forest; walk creek-side and along beaver pond; lunch and ease feet in meadow amid foxglove; complete journey with ice cream at B.J.'s. Perfect trip!

**Sat., April 4 --Finley Wildlife Refuge -- Bird walk, easy.** Leader Rick Ahrens has been leading this trip each spring for the last several years to rave reviews. This is your chance to see many species of birds up close from well placed blinds constructed throughout the park. Rick is an expert (though too modest to be happy with this description) on local flora, fauna and avian life. There are many

routes to hike in the refuge, all of them easy, and the group usually chooses based on weather.

## WREN Upcoming

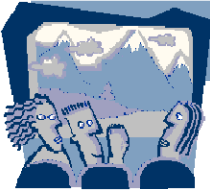
*(Continued from page 12)*

**April 4 - Eggs & Nests Family Program - 10-11:30 a.m.**  
Discover the beauty and wonder of wetland bird nests and eggs! During the program, participants have the opportunity to paint an egg to take home. Suggested Donation: \$2/WREN member and \$4/non-member. Meet at the West Eugene Wetlands Yurt, 751 S. Danebo Ave. in Eugene. For

more information, contact Holly McRae at [hmcr@wewetlands.org](mailto:hmcr@wewetlands.org) or 683-6494.

**April 14 - Wetland Wander - 9-10 a.m.**  
For this spring Wetland Wander, meet at the head of the Tsanchiifin Trail where South Danebo Avenue crosses Amazon Creek. Wetland Wanders are casual walks through various West Eugene Wetlands sites each 2nd Tuesday of every month. WREN will provide binoculars. For more information contact Holly McRae at 683-6494.

## AT THE LODGE



# POTLUCK

Friday March 27:

## Camp Ishi Rally!

**I**F YOU'RE THINKING about attending Summer Camp at Lassen Volcanic National Park, plan to attend the Rally Friday, March 27th. We'll show slides of the park's extraordinary scenery and hiking trails, answer your questions, and collect your registration form (see Bulletin insert) and \$30 deposit if you're ready to commit.

*Lana Lindstrom - Summer Camp Chair*



**March Potluck - Friday, March 27, 2009**  
**Obsidian Lodge - Potluck, 6:30 p.m. Program, 7:30**

*Bring your favorite potluck dish to share...along with plates, utensils and cups... plus \$1 to help cover club expenses.*

Sci Ed Tuesday March 17:

## Biking From Sea To Shining Sea



**O**BSIDIAN BIKERS DIPPED THEIR WHEELS in the Pacific Ocean last year near San Diego and again at the Atlantic beaches of St. Augustine, 68 days and 3,141.2 miles later. The biking team named BLR 3000 will show slides and tell all about their adventures at the March 17 SciEd Tuesday program. Bikers Bill Aspegren, Lyn Gilman-Garrick, Royal Murdock, along with van driver and scout, Christy Aspegren, will share how they averaged 54.2 miles per day, enjoyed 10 days of rest, went from below sea level to 8,228 feet, experienced temperatures from 110 degrees (Imperial Valley) to 25 degrees in Louisiana, and enjoyed catered dinners, including one by a generous family who informed them there were no nearby restaurants. They'll take us from the forests of Ocotillo to the majestic live oaks decorated with Spanish moss, and from roads so private they forgot about cars to the terror of urban traffic in Tallahassee. Come and vicariously join them on this journey.

*Joella Ewing - SciEd Chair*



# Oak Habitat Restoration Tour

Tuesday, March 17 from 10-1

**T**OUR OF MT. PISGAH OAK RESTORATION Project with Jason Blazar. Meet at Pisgah Parking lot at 9:50. Sponsored by Friends of Buford Park for Obsidians and the Native Plant Society.

There will be no trip fee. It is not necessary to sign up at the Y, just meet at the Mt. Pisgah Arboretum parking area around 9:50. The tour will involve hiking up about 2/3's of the way to the top. Call Janet Jacobsen at 343-8030 for more information or if you need to car pool.

## Ridgeline & Spencer Butte Trail Maintenance

Saturday, March 28 from 9-Noon

**J**OIN THE OBSIDIANS and Eugene Parks & Open Space Staff for trail maintenance. The Open Space staff will provide gloves, shovels, and whatever is needed. Get on the e-mail list to be notified about the time and place of the work parties. Get on Peter's email list to be notified about where to meet.

Peter Green, 510-1151 or [trails@obsidians.org](mailto:trails@obsidians.org)

## Summer is Coming!



**T**HE DAYS ARE GETTING LONGER. It is time to be planning summer schedules. The Summer Trips Leader Contact Team has started emailing trip leaders. Please think about what trip YOU would like to lead this spring, summer and fall.

We also have scheduled a leader refresher and training class for Thursday, May 7.

Contact [summertrips@obsidians.org](mailto:summertrips@obsidians.org) for more information.

Jim Pierce, Summer Trips Chair

## Trips Leader Training

Thursday, May 7 from 7-9

At the Obsidian lodge

**I**F YOU'RE CONSIDERING LEADING an outing for the first time, or would like a refresher, this event is for you. Besides safety issues, procedures, and rules, expect adventure stories and tales of the unexpected on the trail, answers to questions you didn't know you had, and answers to YOUR questions. Leading a hike is a serious responsibility and a lot of fun. Come join us, and find out through the advice and experiences of a group of veteran Obsidian trip leaders. You may even win a door prize!

# Obsidian Calendar

## March

- 12 Thu – SW Hills of Eugene, 4m 500' E, Ledet.....683-2603
- 13 Fri – Alton baker park, 8m 900' M, R.Romoser.....726-8154
- 15 Sun – Arrowhead Lake, X-Ski, D, J. Cooper.....344-8517
- 15 Sun – Sunset Bay/Shore Acres, E, Hutchins.....746-4625
- 17 Tue – Pisgah Oak Restoration, M, Jacobsen.....343-8030
- 17 Tue – Cross Country Bike.....Sci Ed Tues
- 20 Fri – State Capitol.....Bus
- 21 Sat – Ridgeline Trail, 5.5m, 1450', M, Jacobsen .....343-8030
- 24 Tue – Skinner Butte Eagles, E, Essenberg.....343-1733
- 27 Fri – Summer Camp Rally.....Potluck
- 28 Sat – Spencer Butte, Trail Main, Green.....510-1511
- 29 Sun – Elijah Bristow State Park, M, Revere.....729-4989
- 30 Mon – Washburne/China Creeks, E, Kandell.....345-8095
- 31 Tue – Ridgeline Trail, 5.5m, 1450', M, Jacobsen .....343-8030

## April

- 2 Thu – Basic Mountaineering Class, Huff .....868-5391
- April 2,4,5 –Thu/Sat/Sun, Rock Sessions
- April 16, 18 –Thu/Sat, Snow Sessions
- 4 Sun –Finley Wildlife Refuge, 3m, 100', E, Ahrens ....689-3996
- 18 Sat –Sweet/Beaver Cr Falls 5.2m, 650', E, Petty ....935-2088
- 19 Sun –Wasson Cr, 5m, 1000', M, Wolling .....345-2110
- 21 Tue – Adventure-Brule .....SciEd Tues
- 21 Tue – Thompson Grist Mill .....Bus
- 24 Fri – Appalachian Trial-Graham.....Potluck

## May

- 2 Sat – Brownsville .....Bus
- 2 Sat –Ridgeline Trail, 5.5m, 1450', M, Jacobsen .....343-8030
- 6 Wed –Spencer Butte, 6.4m, 1800', M, Jacobsen .....343-8030
- 7 Thu – Leaders Meeting, Workshop, J.Pierce.....344-1775
- 8-10 Fri-Sun – Frenchglen & Malheur, Bird, M.Camp..221-1866
- 9 Sat – Diamond Peak, X-Ski 6m 4000' D, G.Sayre.....345-2370
- 15 Fri – Bhutan—Stockdale.....Potluck

## Classifieds

For Rent

**Sunriver Chalet:** Sleeps 4, close to village, fully equipped. Great for skiers visiting Central Oregon. \$80/night. Contact Ginny Reich at 686-8188 or [gcreich@comcast.net](mailto:gcreich@comcast.net)

**Rustic McKenzie River Cabin:** 3br riverfront cabin near McKenzie Bridge needs by-the-week users this summer. Near trails, rafting, hot springs and restaurants. Intro rate is \$880/wk for 2, plus \$100 per addl. person. Six person maximum. Call Ralph at 541-688-0306 after 3/8.

**Yachats Rental:** 1 block from beach and walking trail. Rooms (\$60-80/night) downstairs or house with upstairs ocean views (\$190-250/nt). Availability/questions: [jjobaer@gmail.com](mailto:jjobaer@gmail.com)

Wood For Sale

**WOOD** - Green fir, cut and split at the Obsidian Lodge. You haul. \$120/cord. Contact John Jacobsen, Grounds Chair at 343-8030 or [johnwjacobsen@comcast.net](mailto:johnwjacobsen@comcast.net)



*It's about that time of year - trillium along the Spencer Butte Trail. Photo by John Jacobsen*



OBSIDIANS, INC.  
P.O. BOX 51424  
EUGENE, OR 97405

**OBSIDIANS, INC. IS A NON-PROFIT ORGANIZATION**

PRESORTED STANDARD  
US POSTAGE  
**PAID**  
EUGENE, OR  
PERMIT 803

**RETURN SERVICE REQUESTED**



March 2009