

Inside This Issue

Summer Trips	1
Team Sight Unseen Thank You	2
President's Message	2
McMurphy Revisited	2
How 'bout Them Ducks	3
Clouds and Fog	4
Meet the Committee Chairs	4-5
Hiking Oregon Coast	5
Board Notes	6
Setting the Course	7
Trip Reports & Activities	8-11
Upcoming	11-13
At the Lodge	14
New Concessions Items	15
Classifieds	15
Calendar	15
Picture of the Month	16

Dates to Remember

Mar 16	ExploraTalk—Night Skies
Mar 26	Potluck-Birding in Cuba
Mar 27	Trail Maintenance
Apr 7	Board Meeting

Complete current schedules at:

www.obsidians.org or

Register-Guard – Outdoors – Tuesday

Set Your Sights Higher

2010 Obsidian Spring Climb School

Basic Mountaineering Class

Rock: April 15,17,18

Snow: April 22, 24

Offered in conjunction with Eugene Mountain Rescue.

Contact Larry Huff:

climbs@obsidians.org

541-868-5391

Summertime Is Coming

By Brian Hamilton, Summer Trips Co-chair

SUMMER IS GETTING CLOSER! It's time to dust off your trail guides, get out your maps, and start planning for the 2010 Summer Trips season.

Whether you want to lead one of your favorite old hikes or try out a new one, the opportunities will be here soon. Is there a backpack or bike trip you want to do? Maybe you're more of the kayak or canoe enthusiast. Whatever type of summer outing interests you, **the Obsidians club needs volunteer leaders** to make sure it happens.

If you are a new Obsidian member or you have never led a trip, we want you, too. Summer Trips Committee will soon be contacting Obsidian members asking for leaders to fill in spots on the summer schedule. Why wait to be called? You can beat the rush by contacting the committee at summertrips@obsidians.org or by contacting one of the co-chairs. Think of it as 'Thon-busting' for Obsidians!

IF YOU WANT TO SEE what it takes to lead an Obsidian trip or even if you are an experienced leader, please plan on attending the Summer Trips Kickoff / Social & Leader Training at the Obsidians Lodge, Thursday, April 29th at 7:00 pm. Catch up with old & new friends, share stories, and join us for prizes, refreshments, and of course, training sessions for leaders and potential leaders.

SUMMER TRIPS COMMITTEE: Brian Hamilton and Scott Hovis Co-chairs. Walt Dolliver, Joanne Ledet, Kathleen Floyd, Helen Martz, Mary Hamilton, Elle Weaver, Daphne James, Sandra Larsen, Valerie Metcalfe, Chris Stockdale, Tom Musselwhite, Lyndell Wilken, and Martha Welches.

**Summer Trips
Kickoff, Social & Leader Training
Thursday, April 29th at 7:00 pm at the Lodge**

How 'bout Them Ducks



Winter, spring, summer or fall—being a duck fan is always in fashion.
See Page 3 for Beth Kodama's take on 'ducking'.

Welcome!

New Members

ARTHUR, BILL (Active)

PO Box 221, Harrisburg 97446

995-8294 wgarthur@comcast.net

ORWICK, DOUG (Active)

586 Sweet Gum Ln, Eugene 97401

731-1830 orwickdoug@hotmail.com

Team Sight Unseen Wins

I WANT TO THANK EVERYONE who voted for my climbing team in the Gore Experience More Challenge. We won the grand prize, \$10,000, plus a \$5,000 donation made in my name to the Access Fund! Follow us this summer as we begin our preparations for Aconcagua by climbing Wyoming's highest mountain, Gannett Peak. The following sites will let you monitor our progress: www.teamsightunseen.com and <http://tinyurl.com/yk5ydoq> (Gore Experience More Challenge)

Peter Green

Editor's Note: To learn more about Team Sight Unseen, their leader and their activities, see the July 2008, November 2008, and October 2009 issues of the Bulletin. Also visit their web site at the address above.

McMurphey Revisited

OBSIDIAN MEMBER Mary Ellen West responded to the January *Bulletin* inquiry for information about **Gene McMurphey**. Gene was an Obsidian who was active with the Willamette Pass Ski Patrol. He died in 1947 and the McMurphey shelter was built in his honor. Mary Ellen said he was a grandson of Alberta McMurphey, (for whom the Shelton-McMurphey House is named) but he never lived in the house himself. Mary Ellen is a guide at the house on Saturday afternoons if you would like to know more about the McMurphey family. Check the website for hours open:

www.smjhouse.org/SMJHouse/Home.html

The President's Message: Change in Policy?

WE OBSIDIANS are more likely to share our homes with a pet than a child. We have dogs, cats, birds, hamsters, fish, alligators, snakes, or lizards. Okay, most birds, fish, snakes and lizards don't go for walks.

Pet owners share the JOY of the out-of-doors with a different camaraderie than with other Obsidians. On an outing with their pet, people share who they are at least as much as the trail chatterer who talks the whole hike and hardly sees a fern.

Should we have Obsidian pet outings? If my alligator is on her leash, can she go for a walk with the dogs, cats and hamsters on their leashes? Thoughts and ideas? Please share yours with me at president@obsidians.org.

Jim Pierce, Obsidian Board President

A Look At Obsidian Membership



Year	A	L	H	S	J	Tot
2002	428	28	3	32	10	501
2003	454	26	2	37	12	531
2004	455	27	3	34	15	534
2005	451	25	3	37	18	534
2006	470	21	3	31	18	543
2007	477	21	2	37	20	557
2008	476	21	3	33	13	546
2009	460	20	3	35	12	520
2010	433	18	3	25	8	487

The number of Obsidian members listed above are as of March 1 each year. The abbreviations are:

A - Active Member

L - Life Member

H - Honorary Member

S—Associate Member

J - Junior Member

OBSIDIANS, INC

P.O. Box 322, Eugene, OR 97440

Website: www.obsidians.org

Board of Directors

Jim Pierce, President

Lana Lindstrom, Vice President

Kathy Hoeg, Secretary

Stewart Hoeg, Treasurer

Wayne Deeter, Lyn Gilman-Garrick,
Larry Huff, Verna Kocken, & Elle Weaver

Board meetings are held at 6 pm the first Wednesday of each month, except October when it is the Wednesday after the Annual Meeting, and no meeting in August.

Committee Chairpersons

Byways-By-Bus..... Liz Reanier
 Climbs..... Larry Huff
 Concessions..... Lyn Gilman-Garrick
 Conservation/SciEd... Pat Bitner/Joella Ewing
 Entertainment..... Laurie Funkhouser
 Extended Trips..... Jim Duncan
 Finance..... Stewart Hoeg
 Librarian/Historian..... Lenore McManigal
 Lodge Building..... Doug Nelson
 Lodge Grounds..... John Jacobsen
 Membership..... Barb Revere
 Online..... Wayne Deeter
 Publications..... Joanne Ledet
 Publicity..... Elle Weaver
 Safety..... Jim Pierce
 Summer Camp..... Lana Lindstrom
 Summer Trips . Brian Hamilton/Scott Hovis
 Trail Maintenance..... Matt Bell
 Winter Trips..... Paul Flashenberg

The OBSIDIAN Bulletin

© 2010

Published monthly, except August and December. Articles, story ideas, letters to the editor and other editorial submissions may be emailed to:

bulletin@obsidians.org

Although email is preferred, submissions may also be sent to:

The Obsidian Bulletin

P.O. Box 51424, Eugene, OR 97405

For reprint rights, contact above.

Deadline

for April 2010 Bulletin

Saturday, Apr 3, 2010

Assembly/Mailing Team

For February Bulletin

Assembly & Mail Manager - Lou Maenz

Assembly Team - Tom Adamcyk, Don

Baldwin, Yuan Hopkins, Joanne Ledet,

Lenore McManigal, Margaret Prentice

and Barb Revere

Editorial Team

Writing & Editorial Staff - Jean Coberly,

Bea Fontana, Ken Frazer, John Jacobsen,

Joanne Ledet, Beth Roy, Ethel Weltman

Copy Editors - Jean Coberly & Beth Roy

Graphics, Design & Desktop Publishing -

Stewart Hoeg & John Jacobsen

How 'bout Them Ducks

By Beth Kodama & Photos by Bert Ewing

I'VE DISCOVERED THE KEY TO SURVIVING winter in Eugene – Delta Ponds. From my house it's a straight shot down Chambers to Maurie Jacobs Park and its ample free parking. Then a quick walk across the pedestrian bridge, a left turn past the map, and a few more steps take me into a separate, magical world of ponds and marshes. The rushing sound of the river, just to the left, drowns out most of the traffic sounds, and my concentration allows me to ignore the rest.

I don't ask for much. My goal is to see one new thing every time I go, and eventually to know the Delta ducks* as

well as my brother used to know cars when we were teenagers, from grille to tail-lights. Occasionally I see a new species of waterfowl for the first

time, and it's exciting. This week I 'discovered' gadwalls! But expecting a new species on every visit would be unrealistic. So usually it's a new detail of appearance or behavior. One day I'm amused to realize that I can identify a pair of mottled brown and white ducks as some variety of mallard simply by noting the curled tail feathers – something I knew nothing about only a month ago. Another day it's observing a solitary common merganser and wondering why they don't hang out in pairs, as so many other waterfowl do. Recently I saw a pair of Northern shovelers turning slowly in circles around the axis of their own bills, poked underwater. That's how they churn up food, I learned from an old friend I ran into by chance.

THAT'S ANOTHER THING I LOVE about the Delta Ponds – chance encounters with friends, often Obsidians, and with friendly strangers who are happy to share their knowledge. The ponds attract a lot of birders, and they're a nice bunch of people. Of course, most of them are less selective than I am and have their eyes on the sky, trees, and shrubs as well as the ponds. I can't tell you how many times someone has asked me if I've seen the bald eagle. Well, no, because I don't look up. If an eagle or kingfisher swoops down in front of me to pluck a fish from the water, I'll see it, but otherwise forget about it. I'm looking at the ponds. Why? Part of the answer is simply my love of water, the enormous joy it gives me, a result of my childhood summers on the Finger Lakes in upstate New York. Thinking it over this morning I suddenly realized that birding, or at least 'ducking', is my winter substitute for boating. The male wood duck I watched yesterday

reminded me, in retrospect, of an ornately decorated wooden sailboat I saw at anchor last year. A cluster of Canada geese gently floating in the water, heads all pointed in the same direction, looks to me like a flotilla of old-fashioned hips at

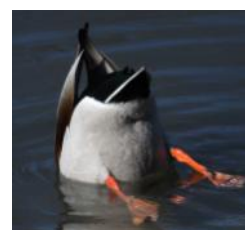
anchor, their necks like masts, their feathers white sails furled against their bodies.

But that's not the whole story. A recent installment of *Pickles*, one of my favorite comic strips, explains the rest. Maybe you saw it.

Earl, sitting on his porch with binoculars, tells his grandson that he's looking at a bird on a nearby pole, maybe a Cooper's hawk, and he's trying to confirm the identification with his guidebook. "I'm a little confused though. It says the Cooper's hawk has reddish bars on his underpants," says Earl. His grandson clears up the mystery: "I think it says underparts." Like Earl, I'm optically challenged, but waterfowl are BIG, they often travel in pairs or family groups, and – best of all – they move slowly across the relatively plain, well-lit background of the water instead of hiding in distant treetops and flitting away from you the minute you spot them. They're the perfect subject for a geriatric beginning birder like me, who chose her guidebook based on the size of the print.

Maybe one day I'll graduate to look at the trees and skies, but maybe not. After all, I don't want to miss the chance for a glimpse of my other love – otters! On my second walk at Delta Ponds this year, I saw a pair of river otters close up. They haven't shown their faces again, but if they do I'll be ready – head down, looking out over the ponds.

**Yes, I do know enough now to realize that they're not all ducks, even if they look like ducks to the novice. But 'waterfowl' is such an ungainly word, and 'waterfowling' is worse. My list so far: Canada goose, mallard, great blue heron, cormorant, coot, pied-bill grebe, American widgeon, gadwall, green-winged teal, common merganser, hooded merganser, bufflehead, lesser scaup, and wood duck.*



The End

Head in the Clouds & All Fogged Up!

By Janet Jacobsen (With appreciation to my personal ghost editor)

MANY OF US HAVE BEEN ACCUSED of being in a fog or having our heads in the clouds.

After finding ourselves in pea soup on Spencer Butte I wanted to use the right word in describing the condition in my trip report. Were we hiking in clouds or fog? Despite my background as a librarian, I turned to the modern source of all information: Google!

One source said, "There is no difference between fog and clouds other than altitude. Fog is defined as visible moisture that begins at a height lower than 50 feet."

When I shared this definition with several science-focused Obsidians I got a variety of skeptical comments about the relevance of 50 feet. Fifty feet from where? Would it be the same if I were at sea level as if I were atop Mt. Hood? One fellow Obsidian, trying to avoid commitment, suggested I avoid stress and just use the term 'water vapor.'

Member Richard Essenberg recommended I consult the Weather Service glossary at <http://forecast.weather.gov/glossary.php?word=FOG>.

OK, let's see if that helps.

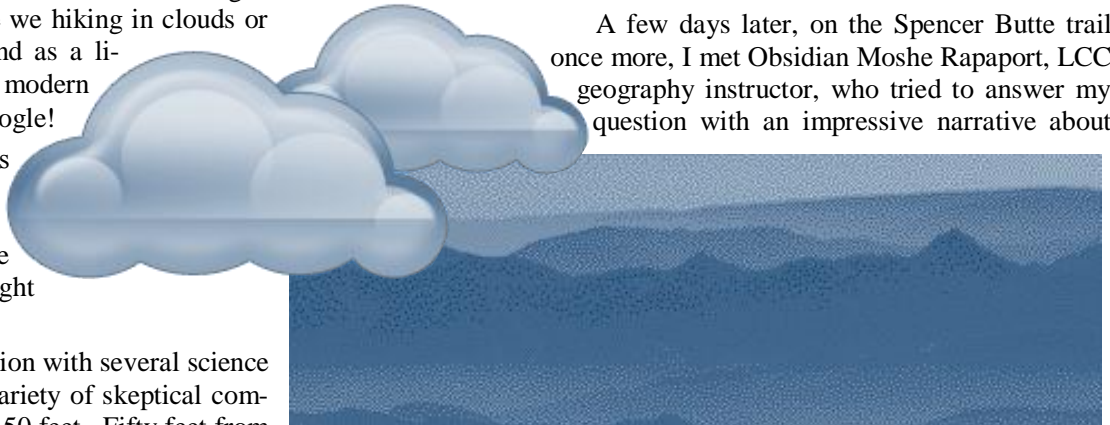
Fog (abbrev. F)...water droplets suspended in the air at the earth's surface. Fog is often hazardous when the visibility is reduced to a mile or less.

Cloud (abbrev. CLD)... visible aggregate of minute water droplets or ice particles in the atmosphere above the earth's surface.

Pat Soussan, a member from England, suggested adding a definition of mist from Wikipedia. <http://en.wikipedia.org/wiki/Fog>. The only difference between mist and fog is visi-

bility. If the visibility is one kilometer (~1,093 yards) or less (in the UK for driving purposes the definition of fog is visibility less than 200 meters, for pilots the distance is 1 kilometer). Otherwise it is known as mist.

A few days later, on the Spencer Butte trail once more, I met Obsidian Moshe Rapaport, LCC geography instructor, who tried to answer my question with an impressive narrative about



the subtleties of the definitions of fog and clouds. He added 'dew' to the mix.

Gary Dalenes, a newcomer to Eugene who was on one of my Spencer Butte hikes, suggested that I just call it 'valley fog.'

So, to conclude, if it is on the ground it is fog, and if it is in the air it is a cloud. And, I guess, if you see a mountain rising above a cloud layer and you drive up to it and find that visibility is reduced to zero and you can't even see your shoes, you're not in that cloud; you're in a fog. But what happened to the cloud? And, conversely, if you find yourself in a fog that slowly clears and visibility surpasses 50 feet above your head, the fog has become a cloud. Right?

Fog, cloud, water vapor, dew, pea soup, whatever. It is better to simply have clear skies and hope for a spectacular view of the Three Sisters from the Spencer Butte summit. That experience does not require clarification.



Meet the Committee Chairs:

Joanne Ledet, Publications Chair

SINCE JOANNE JOINED the club in 1994, she has gone on 134 trips and led 21 trips. She has been a member of the Summer Trips and Publications Committees. She has participated in many trail maintenance work projects. She returns frequently to her native state, Iowa, to visit her mother who just celebrated her 103rd birthday. Deadlines, recruitment, article coordination, editing, production meetings, and mailing are some of the tasks she manages. New decisions made under her leadership have been not to publish the *Bulletin* in December and to send the February mailing to everyone so that all members receive a directory. It was also decided to mail the September *Bulletin*, which includes the membership renewal form, to all members. If you would like to volunteer for the committee, contact Joanne at bulletin@obsidians.org

Hiking the Oregon Coast

By Don Colgan

I AM IN THE MIDDLE of an exciting hiking adventure. My goal is to hike the entire length of the Oregon coast, one segment at a time, by the fall of 2010. The idea is to experience the coastal environment in all its complexity, accomplish something a bit unusual, learn a few things about myself, my friends, the coast and its people, and of course, to create memories.

Last year I finished five legs of the hike, moving from the Columbia River down to Nye Beach (Newport). Much of the hiking is right on the shore, which is spectacular. Some of it is on forest trails up and over the many headlands; these trails provide frequent breathtaking views of the rugged landscape. The quality of the trails varies a lot as some have been maintained and some have not. Unfortunately there are inevitable stretches of road walking, either on quiet rural roads or on Highway 101. What this means is that the dream of a seamless Oregon Coast Trail has not yet been realized.

Most of my chosen legs are hiked over a two day period. Generally I walk one really long segment (12-18 miles) and

then get up the next day and do another 8-12 miles. The average is about 25 miles per leg. I make every effort to do one of these every month from March to October.

My wife Dixie accompanies me most of the time and acts as shuttle driver and moral support. We have stayed in motels and B&B's mostly. On one segment last August I camped with some friends at a state park. I hiked in May, July, August, September, and October, sometimes alone but usually with one or more companions. After taking the winter off I will be starting up again in March and plan to hike every month through October. With luck the goal of crossing the California border will be achieved this year!

I welcome hikers to join me at any point along the route. If this project interests you I invite you to my blog at <http://home.comcast.net/~dycolgan>. It has a pretty thorough account of the hike so far and keeps

you updated as to the next leg. I've had some trouble getting pictures on the site; my wife and I are still working on this component.

Please call me at 541-485-2787 if you have questions. The first 2010 leg will be on March 15-16. The second will most likely be on April 19-20. I anticipate getting to Yachats in March and then down to Florence in April. Let's hear it for the unique and accessible Oregon Coast!



Meet the Committee Chairs:

Matt Bell, Trail Maintenance Chair

MATT'S FIRST TRIP with the club was in 2005 and his first trail maintenance outing was in late 2006. Since then he has barely missed a trail maintenance outing. He graduated from the U of O in December with a MBA and works for Oregon CIS, a non-profit at the U of O. He has been an Obsidian trail maintenance volunteer and worked closely with the former chair, Peter Green. Following in Peter's footsteps he has worked with the city to set up the 2010 schedule of monthly work projects on Spencer Butte and publicized, recruited, and led trail maintenance outings. He has submitted an AHS (American Hiking Society) Trails Day grant application and is working with the city to have a large National Trails Day project in June. He is also working with interested Obsidians to coordinate trail maintenance outings in the National Forests and encourages members to possibly adopt a trail.

We love volunteers! If you are interested in volunteering or leading outings or know of a trail that could use some TLC, please contact Matt at trails@obsidians.org.



BOARD NOTES

March 3, 2010

By *Kathy Hoeg, Secretary*

President Jim Pierce called the meeting to order. Other Board members present: Lana Lindstrom, Wayne Deeter, Stewart Hoeg, Verna Kocken, Elle Weaver, Lyn Gilman-Garrick, and Kathy Hoeg. Also present were: Barb Revere, Lenore McManigal, Pat Bitner, Jim Duncan, Laurie Funkhouser, Matt Bell, John Jacobsen, Paul Flashenberg, Joella Ewing, and Scott Hovis.

Treasurer's Report: Reviewed the Budget-vs-Actual Report and the Balance Sheet. The Board approved bills.

COMMITTEE REPORTS

Summer Trips (Scott Hovis and Brian Hamilton): We request approval of the following committee members: Tom Musselwhite and Sandra Larsen. A Summer Trips Kickoff Social & Leader Training Program is scheduled for Thursday, April 29. The committee will begin calling trip leaders this month.

Winter Trips (Paul Flashenberg): Last month there were 13 trips completed -- 4 hikes, 4 X-skis, 4 snowshoe and 1 snowshoe/X-ski.

Climbs (Larry Huff): The Climbs Committee has put up a link on the website for climb school. We already have 14 confirmed participants with six applications pending. Beginning the process of putting the climb schedule together. The committee is also exploring a climb leader education course geared toward intermediate/advanced skills in the alpine environment.

Trail Maintenance (Matt Bell): February 27th, 2010 Outing held. Statistics for the month -- participants: 13 total, 6 members, 7 non-members. Estimated volunteer hours: 53.

By-Ways-By-Bus (Liz Reanier): The annual bus rally was held at the Obsidian Lodge February 21. Trip leaders gave a synopsis of their trips and answered questions. Sheets were available for sign up.

Extended Trips (Jim Duncan): The first extended trip of the year will be a snowshoeing and skiing trip to Crater Lake on March 26 - 28, led by Beth Kodama and Sharon Duncan. Over 30 members have signed up.

Conservation, Science, & Education

(Pat Bitner & Joella Ewing): Renamed the 3rd Tuesday Sci-Ed the 3rd Tuesday ExploraTalk. The next presentation will feature Sam Pitts with a program on the night sky.

Entertainment (Laurie Funkhouser): Lana Lindstrom's Eastern Europe presentation was well attended with a count of 78 and receipts of \$81.90. Rick Ahrens will be the presenter for the March 26, 2010, potluck; sharing his experience of his recent trip to Cuba.

Membership (Barb Revere): Showed the new forms for Application for Membership. These will be placed at the YMCA bulletin board, at the Lodge, in the Leader Packets, and online.

Publicity (Elle Weaver): An ad will be placed in the spring issue of Walk-With-Me, a newsletter published by Tyler Burgess.

Concessions (Lyn Gilman-Garrick): The Concessions Committee has added a few new items, including fleece vests and beanies and cotton visors. We are sponsoring a contest to encourage members to submit photos for notecards. We set up our table at the Bus Rally on Sunday, February 21st, and at the potluck on Friday, February 26th.

Online (Wayne Deeter): Traffic on the Obsidian web site continues the trend of being lower than a year ago.

Library/Historian (Lenore McManigal): All trips received online have been recorded.

Lodge Building (Doug Nelson): The lodge has been rented for a half day, March 14, for an Eagle Scout ceremony. Thanks to the Bus Committee for leaving the lodge cleaner than you found it.

Lodge Grounds (John Jacobsen): Work parties this month included mural cleaning, a major planting and transplanting party, fir tree removal and our normal pre-potluck spruce up.

Safety (Jim Pierce): The Safety Committee met in February to define our goals and plans. The Obsidian first-aid kits at the YMCA and the Lodge (climbs) will be checked and refilled. We are planning a first-aid class for late Spring. The committee also plans to reorganize and streamline the Safety Manual.

Incident Reports: The members attending the meeting discussed the purpose of Incident Reports. The purpose of the re-

port is to note unusual happenings; don't wait for a major incident to write a report; the Safety Committee needs documentation of a pattern of behavior before it can take any action.

OLD BUSINESS

Safety Deposit Box: Stewart Hoeg reported that the signature card is not up-to-date. The Board approved Stewart Hoeg and Jim Pierce to be the two persons allowed access to the box. Stewart Hoeg has the key that is designated for the Treasurer. The key that was designated for the President has not been found.

Membership Ad Hoc Committee: Lana Lindstrom has formed the committee. The members will be Lana, John Jacobsen, Matt Bell, Kathy Hoeg, and Lyndell Wilken. The purpose of the committee is to consider why membership and leader numbers have been declining and what actions the club might take.

Online Signup System: John Jacobsen reported that he is working on the system.

NEW BUSINESS

National Trails Day: Elle Weaver reported that the club received a letter from GOATS (Greater Oakridge Area Trail Stewards) inviting us to have a booth at their National Trails Day event on June 5. Elle and Lyn Gilman-Garrick will contact GOATS and will consider the benefit of an Obsidian booth and/or Obsidian-led hikes in Oakridge on that day. Matt Bell said that the Trail Maintenance committee may be organizing an activity that day in partnership with Lane County Parks.

Fire Risk: Stewart Hoeg reported that the club received a letter from the Oregon Department of Forestry describing a Wildfire Protection Plan. There may be grant money to help landowners reduce the potential fuel on their property. John Jacobsen has reviewed the letter and believes that the Lodge may not be in the designated area. He also cautioned the grant funding might include onerous requirements.

Obsidians Address: The club maintains two Post Office boxes. Sometimes, mail is sent to the wrong box resulting in a delay while it is forwarded. John Jacobsen will put the southside address on the online signup sheets.

Part 1 - Setting the Course

By Rich Maris, Willamette Pass Ski Patrol

Editor's note: "Setting the Course" is the first part of a two part series. The second part, "Fresh Tracks," will follow in the April Bulletin.

WHAT STARTED AS A 'SIMPLE' ASSIGNMENT, to find and list all the members of the Willamette Pass Ski Patrol who had received awards or recognitions from the National Ski Patrol System, has turned into a full ski-season adventure founded upon the dedication, enthusiasm, and tenacity of Obsidian members during the late 1930s and 1940s.

The best way for Obsidians interested in winter sports and early Obsidian ventures to find their roots is to go on-line and connect with the scanned Obsidian *Bulletins* found at: <http://www.obsidians.org/bulletin/search/>. I have only gone into the winter months of those early years. What I found produced keywords for further searches in the old scanned newspaper archives for the *Register-Guard* found at: <http://www.google.com/archive/search/>.

Early Obsidian ski outings seem fairly well established in 1930 at Lost River Ranch on the McKenzie, where a number of members slid down the toboggan run, without poles, and tried their best on a jump they had built. Others headed up toward Pole Bridge Cabin about 10 miles away. The Obsidian cabins there were headquarters for these outings.

Later, Obsidian Ski Club members and Eugene residents boarded the Eugene Snow Train that brought car loads of skiers up to Crescent Lake. One such outing, "Snow Train", was reported by Norwald Nelson in the *Obsidian*, Jan. 25, 1937. By reading a companion article in the same edition, "Winter Outing", by Glenn Sims, you will have your curiosity piqued and will begin following the tracks of members and events along the trail of months and years, as I have.

An interesting outcome of these reading ventures is the recognition and tracking of Obsidian members through the years. The same thing happens with "Winter Obsidian Playgrounds" along the McKenzie: the CCC project at White Branch, Sims Butte, Hand Lake, and the Sand Hills ski areas.

After the formation of the National Ski Patrol System in 1938 by the National Ski Areas Association, the Obsidians joined forces with the Ski Laufers of Eugene to form a ski patrol of some 40 members. The December 1938 *Obsidian* article, "Ski Patrol," identified the newly formed Willamette Ski Patrol, to be headquartered at Pole Branch Cabin. Early members were Paul Lafferty, former Obsidian President, as Division Chief at Eugene, Guy Wright as the Patrol Chief of Ski Laufers, and Tony Vogel as Patrol Chief of Obsidians. Ten men of the patrol were on duty each weekend to render assistance at ski accidents, perform first aid and to offer some skiing instruction.

THE OBSIDIANS TOOK A LEADING ROLE in Northwest Ski Area Association sanctioned ski races. When not staged in the McKenzie ski areas, Hoodoo Ski Bowl emerged as the prominent location. An early product of the Obsidians ski program, Wallace (Wally) Clark rose to the top and was soon writing articles beginning in the 1940 *Register-Guard* under the banner "Ski Heil!" Wally was also a regular participant and leader in mountaineering ventures into the Sisters from a base of cabins at Frog Camp, leading into what was to become Sunshine Shelter. Many Obsidian winter outings were staged from these cabins until their demise and eventual removal.

The World War II years, with gasoline rationing, brought changes in ski trips. Local walks grew but after the war a new surge of energy and activity in ski trips, again well supported by the Obsidians, exploded like a wave of powder snow in a well-carved high-speed skiing turn.



This photo from the Ray Simms 1936 Collection, provided to us by Curtis Irish from his extensive archives, shows what appears to be an early Obsidian snow outing with some incredible snowmobile pulling a toboggan.

Two of the folks in the photo have an early Obsidian patch clearly visible on their jackets.

Can anyone identify the people in the photo or can you identify the event? Some who have seen the picture believe the man sitting on the track is Ray Simms. If you have any information about this picture please let us know at:

bulletin@obsidians.org.

TRIP REPORTS & OTHER ACTIVITIES



Hikes

Spencer Butte from Martin Trailhead

February 2, 2010

Leader: Janet Jacobsen

Photographer: Jim Pierce

6.5 miles, 1,600 ft. (Moderate)



BLUE SKIES AND SUN GREETED EIGHT OF US for our hour and 45 minutes hike to the top of Spencer Butte. Snow-covered Three Sisters and Mt. Jefferson were glowing in the sun. What an Oregon delight to sit on top and enjoy the company and views. Gary Ladenes identified the pileated woodpecker call but only Jim Pierce and Pat Esch saw it. By the time we were back at our cars, the blue skies had vanished in preparation for the predicted afternoon rain showers. The 6.5 mile hike took 3.5 hours. Members: Pat Esch, Janet Jacobsen, Jim Pierce, Ruth Romoser, Susan Sanazaro and Martha Welches; nonmembers: Gary Ladenes and Connie Pierce.

Sweet and Beaver Creeks

February 14, 2010

Leader and Photographer: Barb Revere

5 miles, 300 ft. (Easy)

GEARED UP FOR A MONSOON, we hiked the Sweet Creek and Beaver Creek trails in beautiful dry weather. The creeks were properly swollen with recent rains and the falls were grand as always. The trails are in pretty good shape with a few short muddy spots. The rocky sections were slippery with fat carpets of moss. Wildflower lovers be aware that spring is about to pop on these trails. We saw a few salmonberry and plum blossoms already bursting forth. A trip to AlphaBit was rewarding and Tom took home marionberry pie for his valentine, waiting at home. Our two nonmembers, Joey Curtin and Richard McGuin-



ness, eagerly took home membership forms. Members Randy Sinnott, Pat Esch, Norma Lockyear, Tom Adamcyk and Barb Revere tried to answer all their questions and more. We look forward to seeing them again. Thanks to Pat Esch for driving.

Larison Rock

February 20, 2010

Leader: Chuck Wagar

11 miles, 2,400 ft. (Difficult)

SUNSHINE WAS THE NORM on this day. Along the way a bald eagle was sighted, and Sarah, a geographer, and Dalen with compass and map skills, enjoyed conversing about such topics. On the way down on most any hike I use a set of trekking poles, which allow me balance and pace. My right ankle did twist significantly, however with my right pole bearing significant weight I avoided a tumble. It was good to have member Sarah Proskievicz and nonmember Dalen Willhite joining me, the leader.

Washburne and China Creek Loops

February 21, 2010

Leader: Marshall Kandell

5 miles, 400 ft. (Easy)

YOU SHOULDA BEEN THERE! Bright sunshine, crystal clear air, flat sea, shirtsleeve weather...in February!!! It was so clear you could almost see the surfers on Oahu. And I've never seen so many families cavorting on what is now called Hobbit Beach. Basking in the sunlit meadow at lunch time, we could have simply had a siesta. But, believe it or not, it was getting too warm, so we moved on. You shoulda been there! Ken Rivernider and I were there and the rest of the club simply missed out on a truly spectacular coast trip. **TRAIL NOTES:** There used to be a Hobbit Trail that went down through the trenches and tunnels of foliage from the highway to the beach. And there was an easier parallel trail with cutbacks that one could follow. Over the past few years, the original trail has been blocked off, first at its bottom and then at its top. All that remains now is the alternate easier trail and just a few yards of the typical old Hobbit Trail at the bottom. New signs now call that the 'Beach Trail,' and say it goes to 'Hobbit Beach.' Of significance for trip leaders is that Bill Sullivan always listed the Hobbit Trail as 1/4 mile from

beach to highway, whereas the current Beach Trail is 1/2 mile. When added to the entire loop(s) that could make the difference between listing the hike as 'easy' or 'moderate.' Also of note: Whether the hobbits did it or the winter storms, the bottom entrance to the Hobbit Trail is now blocked by a rock pile. We skirted the left side of the pile, but more nimble hikers could choose to go directly over it. And, finally, I have previously reported on the mystery surrounding a cabin fire early last century that supposedly took a life, but never yielded a body. We had been told that you could still see the remains of the cabin's rock chimney, but we never did find it. This time, we wandered a few yards off the trail and, thanks to the still low grasses, found the remains of the chimney. We still need to find the rest of the story. Member Marshall Kandell and nonmember Ken Rivernider.

Tahkenitch Dunes

February 25, 2010

Leader: Sandra Larsen

6.4 miles, 650 ft. (Moderate)

WE LUCKED OUT AS FAR AS WEATHER WAS CONCERNED--no rain or wind and moderate temperatures which was surprising with the rain we have had the past few days. Seven members left Eugene at 8:30 and were at the trailhead just before 10:30. The trail was fine, no mud or standing water. We ran into a big problem when we tried to approach the beach from the sand dunes,. Due to winter storms the trail to the beach was a cliff that was too high to safely go down. We bushwhacked through the sticky dune grass for quite a distance before we could find a spot to drop down to the beach. Once we got on the beach the rest of the hike was uneventful. I think the group agreed you couldn't find a better day in mid-winter than last Thursday. Members: Daniele Delaby, Jim Duncan, Sharon Duncan, Yuan Hopkins, Sandra Larsen, Barbara Schomaker and Michelle Tambellini.



Snowshoe Trips

Lava Lake

January 30, 2010

Leader: Scott Hovis

6.5 miles, 300 ft. (Moderate)

THE SNOW WAS POOR BUT GOOD ENOUGH for our purposes. There was a light rain here and there which didn't amount to much. It would have been nice to have a 'birder' along to tell us what the flocks of small birds were; perhaps Pine Siskins? The trail southeast of Lava Lake seems level on the way in but save energy for the way out because it is indeed a slight uphill. Great solitude - didn't see another person. The trails are well marked with blue diamonds (ski) and yellow diamonds (snowshoe). Members: Brad Bennett, Paul Flashenberg, Danielle Harris, Scott Hovis, Judy Ness, Suzanne Steussy and Elle Weaver; nonmembers: Linda Coombs and Jolynn Fabiano

JoAnn Lake

February 6, 2010

Leader: Scott Hovis

8.4 miles, 1,200 ft. (Difficult)

IT WAS JUST THE TWO OF US. I haven't had much luck with interest in a snowshoe that is over six miles. Like most trips this winter, we started in a fine rain. By the time we got to 5700' the snow was great, for this winter anyway: a 2-foot base with 6 inches of fresh snow. The solitude was nice. The Waldo Sno-Park is really just the road plowed, and with all the trucks and trailers it was good to be there early. At the start the snowmobilers were at it, loud and fast. Nothing like the smell of gasoline in the morning! But we soon separated and enjoyed the day in quiet. Members: Brad Bennett and Scott Hovis.

Maiden Peak

February 7, 2010

Leader: Matthew Bell

15 miles, 2,800 ft. (Difficult)

THIS TRIP WAS DELAYED A DAY due to poor weather conditions on Saturday. The rescheduled trip conflicted with observance of the SuperBowl which meant that we had the trip and trail all to ourselves for most of the day. We started out at Gold Lake Sno-Park and followed the Gold Lake Road to the trailhead of the Maiden Peak Trail, then followed the trail all the way to the top of Maiden Peak. After crossing the PCT we began to break trail through deeper and deeper powder. In some sections we sunk down up to a foot. We all alternated breaking trail up Maiden Peak with Rob doing more than his share, which was greatly appreciated. At about the west ridge we went off trail and crossed up to the summit. Our entire trip to the top was under cloudy skies. As we stood on the summit enjoying the occasional views through cloud breaks, a cloud break aligned with the sun to illuminate the summit and us. We stood enjoying the sun's warmth before heading back. The descent along the trail we'd broken earlier was much easier than the ascent. We didn't see anyone or sign of anyone until we got back to Gold Lake Road. Participants: members Elle Weaver and Matthew Bell, and nonmember Robert Beal.

Bechtel Shelter (was Diamond Creek Falls)

February 16, 2010

Leader: Jim Pierce

3 miles, 400 ft. (Easy)

THE PLAN WAS TO GO TO DIAMOND CREEK FALLS, but there was NO snow under the trees, so we went 1000 feet higher to Bechtel Shelter. The 18 signups dwindled to six actual participants. The promised rain came on the drive up, but turned to blue skies at the Gold Lake Sno-Park. The snow was wet and heavy, of course. The snow gauge near the trailhead read 30 inches of snow. We had a speedy hike enjoying the many types of trees and birds. Seeing the sun glinting off the snow was an unexpected treat too. Enjoying the sunny snow was a soon-to-be member Bob Rein, and members Pat Esch, Keiko Byran, Susan Sanazaro, Walt Dolliver and Leader Jim Pierce.

Maklaks Ski/Snowshoe Trip

February 21, 2010

Leader: Lana Lindstrom Photo: Darko Sojak

6 miles, 300 ft. (Moderate)



WHEN I'VE LED THIS COMBINED cross-country ski and snowshoe trip in the past, there have been approximately the same number of each. Today, I was the only skier, and at times, I wondered if I had made the right decision. Going uphill: "#^\$*@, I'm slipping backwards almost as much as I'm going forward. I'm using my arms waaay too much to push myself up. And some of the snowshoers are actually passing me - how could that be???" Going downhill: "I'm going faster than I'd like. Oh no, here comes a mogul (snowmobile divot); stay light on the feet. Whew, I made it, but I'm picking up speed again. Just think of Lindsey Vonn and go for the gold. You're almost at the end! #^\$*@" But it was a glorious day, not a cloud in the sky; and we saw an eagle and shared chocolate and gummy bears. Special thanks to Charlie for driving, Suzanne, Judy, and Daphne for squishing into the back seat, and Pat and Judy for 'sweeping.' Sharing the day were Obsidians Suzanne Steussy, Judy Ness, Daphne James, Sue Meyers, Walt Dolliver, Pat Esch, Charlie Thomas, Darko Sojak, and leader Lana Lindstrom.



Ski Trips

JoAnn and Lorin Lakes

January 31, 2010

Leader: Dave Jensen

10 miles, 1,000 ft. (Difficult)

EIGHT OF US LEFT GOLD LAKE SNO-PARK on a sunny Sunday morning headed for the JoAnn and Lorin Lakes. This lake basin, nestled below the ridge containing Island Lakes, is not visited much in the winter, though it is a very worthy destination. After a quick ski past Gold Lake, and up to Waldo Road, we ascended the Fuji Mountain trail to the JoAnn Lake turnoff. The snow started out somewhat thin, but improved as we gained elevation. From the junction, we dropped down to JoAnn Lake, then headed over to Lorin Lake, enjoying the fluffy snow along the way. We had a leisurely lunch at Lorin Lake while enjoying

the sun on a balmy January day. After lunch, we returned via the same route we took up, though at a much greater speed. The skiers included Obsidians Chrissy Anderson, Sam Miller, Lubos Hubata-Vacek, Harold Thompson and Dave Jensen (leader), and nonmembers Sandy Healy, Paul Murtaugh and Brian Watson.

Maiden Peak Shelter

February 4, 2010

Leader: Lyndell Wilken Photo: Jan Anselmo

10 miles, 1,000 ft. (Difficult)



TRIP LEADERS **LYNDELL WILKEN** AND **JAN ANSELMO** were joined by Sam Miller, Dave Jensen and Kathy Wilkowski on a very enjoyable ski up to the Maiden Peak Cabin via Rosary Lakes and the Pumice Flats. Snow showers fell for most of our trip and we enjoyed the forgiving surface of new snow. We were surprised to find the wood supply at the cabin is gone, so anyone planning an overnight at the cabin should be prepared for no fire. Sam shared his condensed milk snack at lunch which refueled our energy levels, making for a smooth trip back to the car. Members: Jan Anselmo, Dave Jensen, Sam Miller and Lyndell Wilken; nonmember: Kathy Wilkowski.

Redtop Mountain

February 7, 2010

Leader: Gordon Sayre

8 miles, 2,100 ft. (Difficult)

WE DROVE IN TWO TOYOTAS from SEHS to the Crescent Lake Sno-Park in only 90 minutes or so. We were on the trail by 10 am and found this to be one of the better days in a poor year for snow in the Cascades. The Redtop Mountain tour is becoming more popular: there was at least one party ahead of us including some snowboarders or splitboarders. One of our party turned around before the summit, but the other eight were on top by 1 pm, in a cloudy flurry. Three of us took a telemark route down toward Pretty Lake. Others retraced the ascent route. There was perhaps a foot of powder; it was marvelous! The most difficult part of this trip is actually near the bottom where a narrow trail descends through dense trees. Our group was well prepared, however, with skins and wide, edged skis. See you again next year! Members: Chrissy Anderson, Brian Hamilton, Dave Jensen, Gordon Sayre, Randy Sinnott, Harold Thompson and Sue Wolling; nonmembers: Steve Goins and Dave Reuter.

Rosary Lakes

February 13, 2010

Leader: Sue Wolling

7 miles, 800 ft. (Moderate)

THIS HAS BEEN A SKI SEASON of expecting the worst, and hoping to be surprised. That strategy worked for the Rosary Lakes trip. Thanks to balmy weather and a forecast of possible rain, only three skiers showed up for this trip. But after an easy drive up to Willamette Pass (well, easy for the driver; the two tall passengers riding in a Toyota Corolla with skis in their ears might have found it more difficult), we started up the trail on a few inches of fresh snow. While we would have enjoyed more snow underfoot, we were glad there wasn't more snow to feed the bombs that occasionally fell off the branches overhead. After lunch at Middle Rosary Lake, looking up at Pulpit Rock, we headed down. With soft, relatively slow snow, the descent wasn't too exciting, but at least it wasn't the frightening bobsled run that it can be. All in all, it made for a surprisingly not bad day of skiing, and we were back in Eugene by 3 pm! Members: Ed Lizewski, Charlie Van Deusen and Sue Wolling.



Trail Maintenance

Spencer Butte

January 30, 2010

Leader: Matthew Bell

3 miles, 500 ft. (Moderate)

AN IMPRESSIVE TURNOUT (13 volunteers) greeted a dreary day on Spencer Butte. The day's project was to continue

working along the main trail just below the treeline to improve the trailbed, make the trail passable for power-wheelbarrows, and plant native plants to help rehabilitate overused unofficial side trails. The day was very eventful including a power-wheelbarrow that wouldn't start, a thrown track on the other, and rain on a trail maintenance outing. In the collective memory of Obsidian Trail Maintenance Volunteers it had never actually rained during a trail maintenance outing before; I guess there is a first time for everything. We accomplished a lot of work packing in all of the supplies and were able to improve another 40 feet of trail which is now ready to be graveled. Participants included nonmembers Rick McMonagle, Thomas Veeman, Mariah Thompson, Alex Lockfield, Matthew Lockfield, and Connie Morehouse; Obsidians Janet Jacobsen, Joanne Ledet, Jim Pierce, Charlene Pierce and Matthew Bell, leader; and Christer LaBrecque and Lorna Baldwin from Eugene Parks and Open Spaces.

OTHER ORGANIZATIONS' UPCOMING

Nearby Nature

March 22-26: Spring Break Day Camp: Undercover Creatures (Monday-Friday, March 22-26, 8:30-3:30) Use your nature detective skills to find out who's hiding in the trees, fields, and ponds of Alton Baker Park. Discover animals in art on a field trip to the Jordan Schnitzer Museum of Art! Ages 6-9. \$180 members/\$215 non-members. Pre-registration required: contact Nearby Nature at 541-687-9699 or <http://www.nearbynature.org/programs/registration-forms>.

April 17: I Spy Spring! (Saturday, April 17, 12-2 pm, Alton Baker Park) Celebrate spring...and put out the welcome mat for summer! Stop by the Learnscape and our Yurt in Alton Baker Park to meet live reptiles and amphibians from the Oregon Herpetological Society as well as Frannie our costumed Pacific tree frog! We'll also have crafts, garden activities, and a fun raffle. FREE!

Mount Pisgah Arboretum

Reconnect Children with Nature!

REMEMBER HOW MUCH TIME you spent in nature as a child? **Mount Pisgah Arboretum** is training volunteers who enjoy working with kids and want to help get them back into nature. Volunteers are trained to lead small groups of K-5 grade school students on tours, exploring the plants and animals of the Arboretum's woods and waterways. No experience necessary-only a love of nature. An orientation for new nature guides is offered on March 17 or April 1, 6:30-8:00 pm, at the Morse Ranch Family Farm, 595 Crest Drive in Eugene. Training covers everything you need to know to teach young people about nature. Volunteers lead a minimum of one morning tour per week (April 19-June 11). For more information or an application, call Fran Rosenthal, Arboretum Education Manager, at 747-1504, mtpisgfr@efn.org.

UPCOMING EXTENDED TRIP

Sequim Bay State Park

Tuesday, July 13 – Sunday, July 18, 2010



THE PLACE: SEQUIM BAY STATE PARK (pronounced Skwim...the 'e' is silent). The park is on the bay, so you can carry your sea kayak or canoe from your camp to the water. A Rails to Trails bike path starts just a half mile away. And there's fabulous hiking in the nearby Olympic National Park, as well as on the beaches near Sequim. Plus, you don't have to sleep on the ground. What more could you want??!

THE ACTIVITIES: There's more than enough to keep you busy for five days in the Sequim area. Here's a sampling:

- Hike 11 miles roundtrip along the Dungeness Spit, the longest natural spit in the U.S., and tour the lighthouse at the end. www.newdungenesslighthouse.com.
- Hike in Olympic National Park; Hurricane Ridge has a spectacular view of Victoria. www.nps.gov/olymp/.
- Rent a sea kayak or bring your own and paddle the shoreline on the Strait of Juan de Fuca, Dungeness Bay or Sequim Bay. www.bosunslocker.com; www.dungenesskayaking.com; www.atkayaking.com;
- After all the hiking or boating, soak sore muscles in the hydrotherapy pool at the Sequim Aquatic Recreation Center (SARC) or swim laps in the Olympic sized pool. www.olympen.com/sarc.
- Ride a bike (your own or rent) from camp to Port Angeles on the Olympic Discovery Trail. It's approximately 40 miles roundtrip. Part of the path is a converted railroad track and

there are several county parks along the way to stop and rest. www.olympicdiscoverytrail.com.

- Before or after this outing, take the four times a day ferry from Port Angeles to sunny Victoria. \$14.50 one way. www.ferrytovictoria.com.
- Or take the long way home and see the Hoh Valley.
- Take a leisurely stroll around downtown Sequim. Have a latte, check your e-mail at the library, visit an art gallery, museum (www.sequimmuseum.org) or the Audubon Center. (www.dungenessrivercenter.org).
- Tour a local winery or two (www.wineryloop.org) or check out one of the many lavender farms (www.lavenderfarms.com). Sequim is the lavender capital of the world and the annual lavender festival is happening that weekend. (www.lavenderfestival.com).
- Raft the Elwha River (class 2+) on a guided trip (Port Angeles area). www.raftandkayak.com.

THE FACILITIES: This will be a very civilized camping experience. We have a lodge with cooking facilities and refrigerators, as well as a 'living room' with a piano, ping-pong table, sofas and other accouterments. There are flush toilets and showers. You can pitch your tent, but there are also cabins and Adirondacks (three-sided buildings) which have multiple bunk beds. For a premium, these will be available for those folks who prefer sleeping inside and off the ground.

RV and Tents: There are ten or eleven RV or tent spots.

Cabins: There are three cabins, each with windows on two sides. Each has a small refrigerator, microwave, table and four chairs. They sleep 3-4 people in three bunks (doubles with singles on top). All bunks have mattresses; you bring your sleeping bag. The surcharge is \$35 per person,

Adirondacks: These are three-sided shelters with double bunk beds and mattresses; you bring your sleeping bag. Four Adiron-

(Continued on page 13)



OTHER UPCOMING



Upcoming Bus Trips

EXPLORE WEST EUGENE

Date: Tuesday, March 23 **Leader:** Liz Reanier
Cost: \$33 (\$35 non-members) **Reservations and checks to Liz Reanier, 541-687-1925**

WE WILL CONTINUE OUR TRADITION of exploring in the immediate area for our first trip by leaving Shopko at 8:30 am and visiting places in west Eugene, including Creative Clocks, a smoked salmon distributorship and the wetlands. Weather will dictate some of our stops. We will treat ourselves to lunch at Our Daily Bread Restaurant (in an old church) in Veneta, and then proceed with our exploring. Lunch is your cost. Return to Shopko by 4:00 pm.

GUIDE DOGS FOR THE BLIND IN BORING

Date: Saturday, April 10 **Leader:** Ben Jeffries
Cost: \$39 (\$41 non-members) **Reservations and checks to Mary Lee Cheadle 541-689-1085**

COME VISIT OREGON'S INSPIRING national training facility for Guide Dogs. We will have a private tour of the impressive buildings, including veterinary hospital, kitchen for animal meals, and view the combination training-dog housing area. Following the tour, we will attend the heartwarming, one hour graduation ceremonies. The dog recipients will speak, as will most of the volunteer puppy raisers (ten to 18 months of training). There will be a slide presentation concerning the organization's objectives and training. Also, there

will be a demonstration with a dog. There is a gift shop. Lunch, at your cost, will be in the town of Sandy at Calamity Jane's Hamburger Parlor, listed among the 10 best hamburger places in the U.S. Other food is available. Return to Eugene by 6:00 pm.

Conservation Hike:



HJ Andrews Experimental Forest

THE COMBINED Conservation and SciEd Committees will sponsor a conservation hike on Friday, March 19, as a follow-up to the February SciEd Tuesday (now called ExploraTalk) old growth presentation. This trip will include a hike along the Lookout Creek Old Growth Trail in HJ Andrews Experimental Forest above Blue River, a tour of the Andrews facilities, and discussion about research performed at the Forest.

The 3-mile trail is rated moderate, but rugged, with lots of ups and downs and several rather slippery stream crossings and large logs to climb over. This trail is a great old growth hike with lots of great scenery, and the possibility of encountering owls and other wildlife. A signup sheet will be posted at the Y. Call Tom Musselwhite for more information, 541-461-3296.

Note: The 61 year-old HJ Andrews Experimental Forest is a joint project of Oregon State University, the US Forest Service, and the Pacific Northwest Research Station.

Tom Musselwhite, Trip Leader

Sequim Bay State Park

(Continued from page 12)

dacks have four bunk beds each; a fifth shelter has two double bunks only. In most instances, the upper bunks will be used for storage rather than sleeping. In other words, there will be 3-4 people in each shelter. The surcharge is \$10 per person.

THE MEALS: Individuals will prepare their own breakfasts and lunches. Dinners will be catered. Refrigerators, a stove and oven, and storage space are available in the lodge.

THE COST: The cost includes lodging, coffee and tea, and 5 dinners. Some chores will be required.

RV or tents: \$110 per person

Adirondacks: \$120 per person

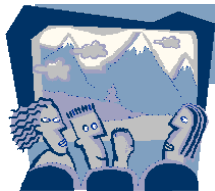
Cabins: \$145 per person

REGISTRATION: The group will be limited to 30 individuals. Send a non-refundable deposit of \$20 payable to the Obsidians to Lana Lindstrom, P.O. Box 5506, Eugene, OR 97405. The balance is due no later than May 31. With your deposit, indicate your first and second choices of lodging type (RV/tent, Adirondack or cabin) and if you would like to share your accommodations with someone else, the name of that person(s).

QUESTIONS: Call Lana at 541-683-1409 or e-mail at лана_lindstrom@hotmail.com

Lana Lindstrom, Trip Leader

AT THE LODGE



POTLUCK

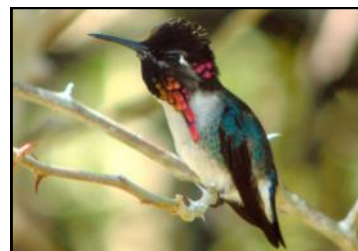
Friday March 26:

A Trip to Cuba



RICK AHRENS WILL SHARE his adventures and insights of Cuba based upon a recent birding trip there. Learn about the bird population as well as the current political, cultural and environmental aspects of this country.

*Laurie Funkhouser
Entertainment Committee Chair*



World's smallest bird



**March Potluck - Friday, March 26, 2010 - Obsidian Lodge
Potluck, 6:30 pm Program, 7:30 pm**

Bring your favorite potluck dish to share... along with plates, utensils and cups... plus \$1 to help cover club expenses.



Tuesday ExploraTalk (Formerly SciEd Tuesday) - March 16

Tour the Night Skies

THE RECENT MERGER of the Conservation and the Science and Education Committees prompts a change in the name of the former Sci/Ed Tuesday programs to 3rd Tuesday ExploraTalk.

The first ExploraTalk will feature astrophotographer Sam Pitts' program entitled "A Scenic Tour of the Night Skies" on Tuesday, March 16, at 7 pm at the Lodge.

Sam will take us on a tour of the night sky with the aid of star charts and images depicting some of the brightest objects normally viewed through telescopes. Some basic astronomy will enlighten the



audience about time, distance and the universe. All of the images are from his personal collection taken over many years from various locations throughout Oregon, the majority within a 45 mile radius of Eugene.

Sam, an amateur astronomer, is past president of Friends of (U of O's) Pine Mountain Observatory and current president of Eugene Astronomical Society. He's given many talks on cosmology, astrophotography, and general astronomy at planetariums, observatories, libraries, and seminars throughout Oregon. Some of his material and photos have been published.

Joella Ewing, Conservation SciEd Co-Chair

New Goodies!

WE ARE VERY EXCITED to announce that we have added three new items to our array of other fine merchandise. We now have cozy fleece vests (both men's and women's sizes), warm microfleece beanies, and cotton twill visors. They all come in an assortment of colors and, of course, proudly display the Obsidian name and logo. Please stop by our table at the next potluck and check them out. You might just find the perfect gift for yourself or a special someone.



Judy Terry models new Obsidian logo vest

Don't forget our contest to find photographs to use on Obsidian note cards! The deadline to get your pictures to us is March 31st. You can send them to Concessions Committee, 1610 Washington St., Eugene, OR 97401, or email them to lyngg@efn.org. Your pictures should capture the spirit of the Obsidians whether it's our sense of adventure or our connection with the natural world. We will announce the winners at the April potluck and they will each get to choose a prize...perhaps a pack of beautiful note cards or a warm fleece vest.

If you have any questions about our new products or our photography contest, don't hesitate to call Lyn at 541-345-5236.

Lyn Gilman-Garrick, Concessions Chair

3rd Annual Skinner Butte Eagles' Nest Walk

Tuesday, March 16th



EACH SPRING, Margaret and Richard Essenberg keep a close eye out for the return of their close neighbors, the bald eagle pair on Skinner Butte. Early March, they saw an adult eagle sitting on the nest so

incubation appears to have begun. They have mapped out the best viewing points all along the short walk in the park and up the Butte. See the May 2009 Bulletin for Margaret's map. The easy hike is 1 mile with 200 feet elevation gain. Sign up at the Y. If possible, bring binocs.

Obsidian Calendar

March

- 13 Sat – **Gold Lake**, X-Ski, M, L.Funkhouser 206-2303
- 13 Sat – **SW Eugene Hills**, Hike, E, J.Ledet 683-2603
- 14 Sun – **Island Lakes Loop**, X-Ski, D, Jensen ... 344-1363
- 15 Mon – **North Shasta Loop**, Hike, M, Romoser 726-8154
- 16 Tue – **Butte Eagles Nest**, Hike, E, Essenberg.. 343-1733
- 16 Tue – **Night Skies**, Sam Pitts **ExploraTalk**
- 19 Fri – **Andrews Forest**, 6m M, Musselwhite 461-3296
- 20 Sat – **Goodman Cr**, Hike, M, Flashenberg 461-1977
- 23 Tue – **Explore West Eugene**, Bus, Reanier 687-1925
- 26 Fri – **Ridgeline Tr** 7m 900' M, J.Jacobsen 343-8030
- 26 Fri – **Birding in Cuba**, Ahrens **Potluck**
- 26-28 – **Crater Lake**, X-Ski/S' Shoe, Kodama 686-3297
- 27 Sat – **Spencer Butte**, Trail Main, Bell..... 503-884-8829
- 27 Sat – **Youngs Rock**, 8.4m 2500' D, C.Wagar.. 543-1489
- 28 Sun – **Maiden Peak**, X-Ski, D, Anderson 946-1732
- 30 Tue – **Sweet Creek**, Hike, E, J.Pierce 344-1775

April

- 3 Sat – **Ridgeline Tr**, 6.2m 900' M, J.Jacobsen 343-8030
- 6 Tue – **Spencer Butte**, 7m 1300' M, J.Jacobsen.. 343-8030
- 10 Sat – **Guide Dogs for the Blind**, Bus, Cheadle 689-1085
- 15 Thu – **Basic Mountaineering Class**..... Huff 868-5391

Rock: April 15, 17, 18

Snow: April 22, 24

- 20 Tue – **Discover Newberg**, Bus, J.Speelman 344-3019
- 23 Fri – **Mystery Canyon**, McManigal Johnson.....**Potluck**
- 24 Sat – **Spencer Butte**, Trail Main, Bell..... 503-884-8829
- 30-May 2 Fri-Sun – **Spring Basin**, Stockdale..... 767-3668

May

- 11-12 Tue-Wed – **Columbia Gorge**, Bus, Cheadle689-1085
- 21 Fri – **Devils Staircase**, Tvedt**Potluck**
- 26 Wed – **Spencer Butte**, Trail Main, Bell.... 503-884-8829

June

- 22 Tue – **Salem**, Bus, J.Speelman 344-3019
- 25 Fri – **OR Nat Desert Assoc**, Comstock **Potluck**
- 30 Wed – **Spencer Butte**, Trail Main, Bell.... 503-884-8829

July

- 13 Tue – **Butterflies**, Bus, B.Payne..... 746-1964
- 13-18 Tue-Sun – **Sequim**, L.Lindstrom..... 683-1409
- 28 Wed – **Spencer Butte**, Trail Main, Bell.... 503-884-8829

Classifieds

For Sale

WOOD - Green fir at the Obsidian Lodge. Split, you haul. \$110/cord, or we can haul for \$40. Half cords available too. Contact John Jacobsen, Grounds Chair: 343-8030 or johnwjacobsen@comcast.net

Note: There is no charge for placing Obsidian Bulletin Classified ads; however, only members can place ads and preference will be given to ads that relate to the club's mission and our members' outdoor activity interests.



Elle Weaver, Matth Bell, and Robert Beal on Maiden Peak. See trip report on Page 9. Photo by Matt Bell

March 2010



RETURN SERVICE REQUESTED

OBSIDIANS, INC.
P.O. BOX 51424
EUGENE, OR 97405



OBSIDIANS, INC. IS A NON-PROFIT ORGANIZATION

PRESORTED STANDARD
 US POSTAGE
PAID
 EUGENE, OR
 PERMIT 803