

Inside This Issue

Summer Trips Kick Off	1
Obituaries	2
Thank-you Premium Members	3
March Board Notes	4
Trip Reports	5-8
Bus Trips 2013 Schedule	9
Upcoming	10
Summer Camp Questions	11
Recycled Tent	11
Camp Registration	12-13
Potluck	14
ExploraTalk	14
Wednesday Challenge	15
Thank-you Jimmy John's!	15
Calendar	15
Picture of the Month	16

Dates to Remember

March 22	Potluck
March 26	ExploraTalk
March 30	Bulletin deadline
April 3	Board Meeting

Complete current schedules at:
www.observians.org or
Register-Guard – Outdoors – Tuesday

Summer Trips Kickoff

Tom Musselwhite, Summer Trips Committee Chair

TUESDAY, MARCH 12 IS THE SUMMER TRIPS KICKOFF AND LEADER ORIENTATION. Make sure to add that date to your calendar. Our hostess this year is Jorry Rolfe and we will begin at 6:30 PM at the Lodge!

Leaders! Send in your Summer Trips! Log in to your Obsidian homepage and click on the *Full Schedule* button to see what trips are already on the program for this summer. Get those trips in soon! Make sure your trips get listed early!

Summer Trips are mostly day trips and overnight backpacks within a 100-200 mile radius of home. Summer Trips are mostly hikes, bicycle rides, canoe or kayak trips and pretty much anything you can get the Summer Trips Committee to approve.

Have an open date but having a problem with a destination? Email the Trip Genie at summertrips@observians.org and get a suggestion out of the magic lamp.

Go to *Online Signup* now, and sign up for this year's Summer Trips Kickoff! Any questions? Email summertrips@observians.org!



Obituaries

Edna Robertson 1919-2013

EDNA ROBERTSON, AGE 93, passed away peacefully on February 3. Edna was born in the Midwest but lived in many locations before settling in Eugene in 1994. She joined the Obsidians soon after her arrival and participated in 48 bus trips, the last to the Headwaters of the Metolius in 2007. Edna is survived by two daughters and other family members.

Editor's Note: A complete obituary can be found in the Feb. 17 issue of the Register-Guard.

OBSIDIAN MEMBERSHIP REPORT

Active Members	417
Associate Members	21
Honorary Members	5
Junior Members	10
Life Members	16
Total Members	469

Welcome New Members

Crandall, Hope (Active)
844-1307
tanenz@comcast.net

Fenton, Karen (Active)
PO Box 855
Marcola, OR 97454
933-2588
karencandance@gmail.com

Fogg, May (Active)
24622 Butler Rd
Junction City, OR 97448
689-0365
mayfogg@gmail.com

Kwak, Sandra (Active)
3461 Merryvale Rd
Eugene, OR 97404
221-5444
AlexKwak@comcast.net

McAllister, David (Active)
2750 Shadow View Dr #410
Eugene, OR 97408
954-6490
mca.dave@yahoo.com

Rogers, Jennifer (Active)
1819 Monroe St
Eugene, OR 97402
906-630-5770
rogersjenni@hotmail.com

THE OBSIDIANS NOW HAS A FACEBOOK PAGE
www.facebook.com/#!/theobsidians

OBSIDIANS, INC

P.O. Box 51510, Eugene, OR 97405
Website: www.obsidians.org

Board of Directors

Elle Weaver, President
Matt Bell, Vice President
Susan Wanser, Secretary
Stewart Hoeg, Treasurer
Sharon Cutsforth, Pat Esch, John Jacobsen,
Tom Musselwhite, & Nancy Whitfield

Board meetings are held at 6 PM the first Wednesday of each month, except October when it is the Wednesday after the Annual Meeting, and no meeting in August.

Committee Chairpersons

Byways By BusLiz Reanier
Climbs.....Brian Hamilton
Concessions.....Patty McAfee
Conservation/SciEdJoella Ewing
EntertainmentSusan Wanser
Extended Trips.....Chris Stockdale
Finance.....Stewart Hoeg
Librarian/Historian.....Lenore McManigal
Lodge Building.....Doug Nelson
Lodge GroundsJohn Jacobsen
Membership.....Elle Weaver
OnlineWayne Deeter
PublicationsNola Nelson
PublicityJorry Rolfe
SafetyPat Esch
Summer CampLana Lindstrom
Summer TripsTom Musselwhite
Trail MaintenanceMatt Bell
Winter TripsAnne Bonine

⁷⁴ OBSIDIAN Bulletin © 2013

Published monthly, except August and December. Articles, story ideas, letters to the editor and other editorial submissions should be emailed to:

bulletin@obsidians.org

For reprint rights, contact:
The Obsidian Bulletin

P.O. Box 51510, Eugene, OR 97405

Deadline
for April 2013 Bulletin
Saturday, March 30, 2013

Assembly/Mailing Team For February Bulletin

Assembly & Mail Manager - Lou Maenz
Assembly Team - Tom Adamczyk, Don Baldwin, Clara Emlen, Joanne Ledet, John & Lenore McManigal, and Margaret Prentice

Editorial Team

Writing & Editorial Staff - Bea Fontana, Joanne Ledet, Nola Nelson, and Ethel Weltman
Copy Editors - Nola Nelson & Ethel Weltman
Graphics Design & Desktop Publishing - Stewart Hoeg

**Thank You, Thank You,
Grazie, Danke, Merci, Arigato, Tak...**
**to the following generous donors, for their support of the
Obsidians through their premium memberships.**

Platinum Members: (\$200 or more)

Gordon Gribble

Gold Members: (\$100 to \$199)

Joan Bradley, Deb Carver, Rob Castleberry, Margo Fetz, Janet Jacobsen, John Jacobsen, Michael Landes,
Kathryn Madden, John McManigal, Lenore McManigal, John Pegg, Jim Pierce, Charlene Pierce,
Shellie Robertson, Velma Shirk, Judy Terry, and Elle Weaver

Silver Members: (\$50 to \$99)

Jennifer Barnes, Donald Bienvenue, Anne Bonine, Max Brown, Hal Busby, Susan Carey, Dan Christensen,
Dallas Cole, Ralph Core, Sharon Cutsforth, Wendy Dame, Don Doerr, Jim Duncan, Sharon Duncan,
Larry Dunlap, Charles Durham, Clara Emlen, Jack Ewing, Joella Ewing, Bob Foster, Shirley Froyd,
Richard Heinzkill, Scott Hovis, Larry Huff, Robert Jones, Brenda Kameenui, Verna Kocken, Joanne Ledet,
Ann Lichtenstein, Ed Lichtenstein, John Manotti, Lisa Manotti, Helen Martz, Diana Masarie,
Juli McGlinsky, Lynn Meacham, Sam Miller, Zola Ehlers Miller, Cat Nelson, Doug Nelson, Natalie Newlove,
Lin Pierce, Karla Rusow and Ellen Sather

Outdoor First

Sue Sullivan and Pat Esch

THE OUTDOOR FIRST AID COURSE WAS A GREAT SUCCESS! Instructor Laurie Monico from the Willamette Ski Patrol and Eugene Mountain Rescue, with many helpers, led twenty-one participants three Thursdays in a row, through the particulars of *what to do*. We learned to assess a situation, how to talk to an injured person, to bandage wounds, to apply splints (using what was at hand), to deal with cold and heat problems, some steps to stabilize a critically injured person and when to call for help.

Using SAM splints, cravats and bandages, we got to experiment on and to be experimented on by our fellow participants with experienced helpers on hand to guide us. We even learned how to put a leg in traction using ski poles, cravats and a fountain pen! I'll remember to always carry a pen on my outdoor trips. The old Red Cross First Aid handbooks have great illustrations on how to wrap slings and bandages around those awkward spots created by elbows, knees and ankles. My favorite visual aid was the one on *Bugs, Bites and Stings* with lovely pictures of the perpetrators.



At the third meeting, seventeen participants received certificates of completion from the National Ski Patrol and everyone present got homemade cookies.

March Board Notes

By Susan Wanser

President Elle Weaver called the meeting to order. Other Board members present: Matt Bell, Sharon Cutsforth, Pat Esch, Stewart Hoeg, John Jacobsen, Tom Musselwhite, and Susan Wanser. Also present were: Anne Bonine, Wayne Deeter, Joella Ewing, Kathy Hoeg, Lenore McManigal, Doug Nelson and Jorry Rolfe.

The Board approved the minutes of the February 2013 meeting.

Treasurer's Report: Stewart Hoeg reviewed the Budget-vs-Actual Report and the Balance Sheet.

The Board approved payment of the bills.

COMMITTEE REPORTS

Summer Trips (Tom Musselwhite): The Summer Trips Kick-off is scheduled for March 12th. Currently there are 20 summer trips scheduled: 1 backpack, 4 bike, 14 hikes, and 1 canoe/kayak.

Winter Trips (Anne Bonine): So far this season we have had 40 trips completed, 260 members, 123 nonmembers.

Climbs (Sue Sullivan): The registrations for climb school are coming in more slowly than in previous years, though there have been a lot of inquiries after recent publicity efforts. The schedule for climbs for 2013 is being developed.

Trail Maintenance (Matthew Bell): There was one outing in February. We continued to work to improve and restore drainage channels on the uphill side of the Ridgeline Trail near the Tie Trail Junction. We also worked to add and improve existing retaining walls. One of our participants burned shining geranium and herb Robert, both invasive plants. February Trail Maintenance Participation: One outing in Spencer Butte Park: Participants: 12 total: 9 members; 3 nonmembers; Estimated Volunteer Hours: 36.

Highways and Byways By Bus (Liz Reanier): The February Eagles 'N More bus trip to Klamath Falls went well. The Bus Rally at the Lodge was also successful with approximately 40 people attending to hear about the bus trips and enjoy refreshments. We had a good number of people sign up for most of the trips. Our next trip is English Tea at Lovejoy's in Florence on March 12th.

Conservation, Science, & Education (Joella Ewing): Janet Jacobson has volunteered to host a double feature ExploraTalk movie night on Tuesday, March 26 on the Kam Wah Chung General Store in John Day. The second movie will be Kolb Brothers and Grand Canyon Pioneers. There will be plenty of popcorn.

Publication (Nola Nelson): All members received a hard copy of the February *Bulletin*, because it included the new 2013 *Membership Directory*.

Entertainment (Susan Wanser): 75 people attended Jim Duncan's presentation about hiking in England at the February potluck.

Membership (Elle Weaver): Six new members were approved by the Board.

Publicity (Jorry Rolfe): Our February 28 National Chili Day

Hike was posted on the Y Facebook page and a short article appeared about the January work party in the "Kudos Korner" section of the online Eugene Park Stewards News, Feb. 6, 2013. An article about our e-lists will appear in the April *Bulletin*. In the meantime, protocol for these weekly online messages (UPDATES) is being worked out. Newly redesigned business cards are in the works. For details, contact John J. or Jorry R. Plans are in the works for our involvement at the Spring Cling climbing event open house on Sat., May 4 at Willamalane Center from 1-4 pm. If interested in volunteering, please contact Jorry or climbs@obsidians.org. For the June 1 Ridgeline Celebration Obsidians are working with Eugene Park Steward volunteer coordinator C. Karl on ideas. If you would like to lead a hike or explain trail maintenance that day, please contact Janet, Darko or Matt.

Concessions (Patty MacAfee): Our new concession items for 2013 (denim shirts, rain ponchos, polyester t's, beanies, sunhats) arrived in time for the February potluck. Also, a number of items were donated for an upcoming raffle.

Online (Wayne Deeter): We are up to 167 "Likes" on *Facebook*. There are now 402 photos in 54 albums in the new photo gallery system.

Lodge Building (Doug Nelson): The Lodge has been reserved for a memorial service for March 17. There seems to be an increase in inquiries concerning lodge rental recently, and we have quite a few Obsidian events scheduled.

Lodge Grounds (John Jacobsen): One grounds committee activity occurred during February, a cleanup before the February 22 Potluck.

Safety (Pat Esch): The first aid kits at the YMCA were inventoried and resupplied by Pat Esch and Lyndell Wilken.

OLD BUSINESS

There was a meeting regarding the Laurel Ridge project held on Feb 7th. The developer was present at the meeting, but there was nothing new to report.

NEW BUSINESS

The Board approved Stewart's recommendation for the allocation of 2012 Obsidian investment income to the capital and contingency fund.

The Board approved Clara Emlen as a member of the Trail Maintenance Committee.

The Board approved \$700 for the replacement of the current stove.

The Board meeting approved an expenditure of \$2,100 for tree removal and cleanup on the Lodge grounds.

ANNOUNCEMENTS

At the next Board meeting we will form a Nominating Committee consisting of at least 5 active members.

March 16-Spring cleanup Lodge Grounds party.

The next Board meeting will be on April 3 at 6:00 PM.

Trip Reports & Other Activities



Ski Trips

Redtop Mountain

January 27, 2013

Leader: Gordon Sayre

Xski: 8 miles, 1,500 ft. (Difficult)

SNOW CONDITIONS WERE EXCELLENT for Redtop Mountain this time, with one to four inches of fresh snow on top of a firm crust from three weeks of dry, clear weather in the Cascades. It was snowing lightly all afternoon. A couple of the skiers made the climb using crown-base ski patterns, while the rest used climbing skins. The route was clearly tracked by other parties on the way up. For our descent, we took a ridge on the north side of the mountain, and then made a long and scenic traverse back to Pretty Lake. The group was a mix of Obsidians back-country veterans and a couple of newer faces, and everyone kept the same pace both up and down. A marvelous outing on a great day in our local mountains. Members: Chrissy Anderson, John Hartman, Sam Miller, Julie Polhemus, Spencer Robertson, Gordon Sayre, Harold Thompson. Nonmembers: David McAllister.

Rosary Lakes

February 1, 2013

Leader: Steven Johnson

Xski: 7 miles, 750 ft. (Moderate)

EIGHT DEVOTED FANS of cross-country skiing decided to take the chance that the previous two days of warm weather had not totally ruined the trail into Rosary Lakes. While the trail going up was a bit on the crusty side, we were rewarded with a pleasant lunch in the brilliant sunshine on lower Rosary Lake. We did however have to endure an aggressive Clark's Nutcracker who thought our lunch belonged to him. He has become very adept at swooping down to grab a bite out of a sandwich. That day's warm weather eventually softened the snow making for a fun three mile glide back to the Willamette Pass ski area. Members: John Hartman, Steven Johnson, Brenda Kameenui. Nonmembers: Linda Gilbert, Phyllis Goldman, Tamara Johnson, Crystal Warsaw, Jeanine Taylor.

Booth Lake Loop

February 2, 2013

Leader: Brian Hamilton

Xski: 7.5 miles, 1,600 ft. (Difficult)

THE BURNED-OUT LANDSCAPE remaining from the 2003 B&B Complex Fires is a wonderful place to ski when conditions are right. The wide-open terrain makes it easy for skiers to go at their own pace and still remain in sight of the rest of the group. The downhill runs on sparsely-treed slopes can be equal to what is found at any ski resort, but without the crowds. Conditions on our trip were excellent (sunny, warm, and wind-free) with the one exception of a hard, icy, surface. Most of us had to use climbing skins on our skis to get any grip in the snow. By coincidence, we arrived at the Santiam Sno-Park at the same time as another group of mostly Obsidians, informally led by Sam Miller. We were all headed the same direction, so we traveled together for the first half of our trip. After climbing for two hours, we reached the edge of the ridge above Booth Lake. Sam's group continued on toward the south slopes of Three Fingerted Jack, while we started our first downhill runs. After a few hours of sunshine, the snow had not softened, so we kept our skins on for much of the way down to Booth Lake to keep from going too fast. With skins, though, it was hard to control our turns, so off they came when the angle of the slope eased up a little. From Booth Lake to the southwest corner of Square Lake, we were constantly faced with the decision of whether to skin up to make it over each little rise, take our skis off and posthole up, or just struggle up over the slick surface. We ended the trip with a quick, two-mile stretch, somewhat parallel to the highway and generally sloping just enough to make it fun and easy. Our total trip was 7-1/2 miles and took five hours. Members: Brian Hamilton, Randall Sinnott. Nonmembers: David McAllister.

Circle Lake Loop

February 9, 2013

Leader: Sue Wolling

Xski: 10 miles, 300 ft. (Moderate)

WITH NO RECENT SNOWFALL and considerable sunshine over the preceding few days, we were anticipating icy, potentially miserable ski conditions on the Circle Lake trip—but we decided to chance it, and were well-rewarded. We drove on bare pavement all the way to Ray Benson Sno-Park, and were delighted to find very good snow conditions all the way around the loop. We started with a group of six, but when 14-year-old Austin found that several years of snowboarding had obliterated the cross-country skiing skills he had as an eight-year-old, he and his mother opted to spend the day practicing on the groomed trails at Hoodoo. The rest of us skied on, and enjoyed good snow and a lot of sunshine in the morning, though it clouded up in the afternoon. Two miles from the parking lot, we were able to perform an Obsidian good deed. We encountered Kaplan, a young man skiing on some very old boots in which the sole

had suddenly separated from the rest of the boot, leaving him with a very floppy connection to his binding. Pulling out the 11th and 12th essentials (duct tape and a long piece of string), we helped him bind the boot and sole together well enough for him to continue skiing. We then headed on to the parking lot, where we encountered dozens and dozens of Boy Scouts from across Oregon, there for a weekend of camping out and practicing snow skills. We were glad to leave them to their snow caves and igloos, as we headed back to our hot showers! Members: Chris Stockdale, Jeanine Taylor, Sue Wolling. Nonmembers: Melanie Speicher, Deborah Cooke, Austin Turvey.

Fuji Mountain
February 10, 2013
Leader: Harold Thompson
Xski: 14.6 miles, 2,890 ft. (Difficult)

RARELY IN FEBRUARY is one able to lounge at the summit of a Cascade peak on a windless sunny day. Fuji Mountain was that rare day. Eight skiers left Waldo Lake snow park at 8:50 AM for the two road miles of travel before turning off onto the Fuji Mountain Trail. Steady climbing brought the group up to the plateau and on past Birthday Lake. Skins were used by all skiers to climb the final steep two miles, and snow buildup on the bottom of the skis was a problem in the softening conditions. The first were on the summit at 1:40 PM and all were basking in the sunshine by 2:00 PM. With lots of variation in equipment and downhill technique, everyone headed back down making turns where ever possible. All skiers were back to the cars by 5:15 PM to conclude a very long, but fun day. Members: Chrissy Anderson, Frank Chemotti, Marci Hansen, Dave Jensen, Kevin McManigal, Sam Miller, Spencer Robertson, Harold Thompson.



SnowShoe Trips

Diamond Creek Falls
February 16, 2013
Leader: Jim Pierce
Photographer: Ariana Songer
Snowshoe: 4.5 miles, 400 ft. (Moderate)

A DOZEN DETERMINED DODDERERS had a marvelous snow shoe outing to Diamond Creek Falls. The weather was warm and dry. The snow was icy and the trails well worn. The overlooks at Salt Creek Falls and Gorge were sensational. As we arrived at Diamond Creek Falls, the clouds rolled in ... perfect for pictures of Diamond Creek Falls. What a great outing! Members: Roberta Chord, Don Cross, Daniele Delaby, Charles Durham, Nancy Matthews,



Jim Pierce, Darko Sojak, Nancy Whitfield. Nonmembers: Daniel Hartnell, Ari Songer, Sandra Kwak, Sarah Lott.



Hikes

Moon Mountain
January 27, 2013
Leader: Janet Jacobsen
Hike: 2 miles, 300 ft. (Easy)

IT TOOK 5,000 STEPS to complete the two mile loop to the top of Moon Mountain Park (945 ft. high) and down the other side to Laurel Hill City Park. It was a curious group with lots of questions. When we started the hike near the vacant lots of the East Ridge area, we wondered “what happened to the developer?” From the top of Moon Mountain, we tried to identify the features of the confluence of the Willamette River. Those questions were answered in timely articles in the Monday’s *Register-Guard*. None of us knew how Moon Mountain got its name or when the city made it a park. May suggested that Moon Mountain would be a good place to view the August Moon coming up in the east. It was a perfect hike for a rainy Sunday afternoon. Members: Mary Ellen Baukol, Janet Jacobsen, Holger Krentz, Verlean McCoy, Effie Neth, Mike Piehl, Cindy Rust. Nonmembers: Mark Hougardy, Christiane Hougardy, Anna Hougardy, Alice Krentz, Serge Faumont, May Fogg.

Ridgeline Trail
February 2, 2013
Leader: Janet Jacobsen, Asst Leader: Darko Sojak
Photographer: Darko Sojak
Hike: 6.2 miles, 900 ft. (Moderate)

OUR SECOND ANNUAL GROUNDHOG HIKE began in thick fog. We had been walking in the fog for almost three miles when the sunlight began to drift through the trees. Anna, our groundhog procurer, somehow enticed a groundhog to

emerge in the sunlight. What a surprise for sixteen of us who didn't expect such a likeable creature to greet us and cast a shadow. Welcome to Anna and her parents, who will be new members by the time this report is published. The car shuttle went smoothly thanks to the nine drivers including Toresa Martell who drove from Coos Bay to hike with us. Members: Jane Allen, Jim Duncan, Sharon Duncan, Carl Hassman, Janet Jacobsen, Holger Krentz, Sandra Larsen, Jorry Rolfe, Susan Sanazaro, Darko Sojak. Nonmembers: Sandra Kwak, Morris Ostrofsky, Mark Hougardy, Christiane Hougardy, Anna Hougardy, Toresa Martell, May Fogg.



Anna Hougardy at the Summit

McDonald Forest

February 20, 2013

Leader: Kris Wolters

Hike: 8 miles, 1,000 ft. (Moderate)

WHAT A BEAUTIFUL DAY! The sun followed us for most of the hike and we stayed out of the poison oak. We met at MOC, and then drove to Timberhill Athletic Club to begin our hike on a state-funded boardwalk through a wetland. We went up an unnamed trail to Chip Ross Park, went west at the top of Chip Ross Park to Dan's trail in Mac Forest, and then took Jackson Creek trail to Lower Horse trail. We went left of the road to meet up with Lower Dan's trail, to a side unofficial trail to the road system leading us to the Corvallis water supply, then unnamed trails looping back to Timberhill on the boardwalk. It was a total of 7 1/2 miles, with lots of uneven balancing, and 1,200 feet total elevation gain. After completing our hike we enjoyed lunch at MOC. Members: Janet Jacobsen, Kris Wolters. Nonmembers: Jerri O'Brien, Sandra Kwak, May Fogg.

Ribbon Trail/Hendricks Park

February 24, 2013

Leader: Janet Jacobsen

Hike: 5 miles, 250 ft. (Easy)

SURPRISE! IT WAS SUNNY AND WARM for our hike on the Ribbon Trail to the trails in Hendricks Park. Twenty-four of

us left the lodge at 11:00 AM, and returned at 1:00 PM for the Bus Rally. Our thanks to the Bus Committee, who provided great refreshments and shared the highlights of their upcoming bus trips. Concessions was open for business. It was a lively way for activities of three committees to connect members and guests. Members: Jane Allen, Roberta Chord, Autumn Edwards, Chyanne Edwards, Trenton Edwards, Clara Emlen, Dick Hildreth, Anna Hougardy, Christiane Hougardy, Mark Hougardy, Janet Jacobsen, John Jacobsen, Holger Krentz, Darko Sojak, Tom Woxell. Nonmembers: Carolyn Sojak, Karen Fenton, Hope Crandall, Jake Bradshaw, Roger Galka, Maria Gerspacher, Sandra Kwak, May Fogg, Tim Bradshaw.



Trail Running

Ridgeline Trail

February 5, 2013

Leader: Dave Beardsley

Trail Run: 1.6 miles, 200 ft. (Moderate)

WAS THIS THE FIRST EVER official Obsidian trail run? Maybe not, considering in the history of the Obsidians, at least one hiker has come face-to-face with a bear! As with many winter runs, it started pouring as soon as I pulled up to the parking area on Fox Hollow Road. With very short notice, I actually had a participant—Diana. We met at 5 PM—a very late start for February 5th. The rain soon let up and we ran the 1.6 mile loop trail between Fox Hollow and Dillard Rd. Temperature was 53 degrees. I hope we develop a dedicated group of trail runners. The goal is to run a different loop every week and eventually cover every foot of the local trails. The pace is moderate, the mud can be deep and the views are fantastic. Members: Dave Beardsley. Nonmembers: Diana Masarie.

Mt. Pisgah

February 12, 2013

Leader: Dave Beardsley

Trail Run: 3 miles, 500 ft. (Moderate)

IT WAS A BEAUTIFUL AFTERNOON for a trail run on Mt Pisgah. Unfortunately, nobody signed up for this, the second run of the season for the Obsidians. Where are the runners? The weather was perfect, dry and in the high fifties. I ran up through the Arboretum, then speed-hiked up the west face direct to the summit, down the south ridge trail to Trail 3, then across the west face to the bench, then to the saddle, then down Trail 17 back to the main parking lot. Members: Dave Beardsley.

Spencer Butte
February 19, 2013
Leader: Dave Beardsley
Trail Run: 3 miles, 500 ft. (Moderate)

THIRD RUN OF TRAIL RUNNING SERIES, this time at Spencer Butte. From Fox Hollow up trail across street, to Y, then right and turn around at North Ridge trailhead. Then back to parking lot, water at truck, then one lap around Fox Hollow/Dillard loop. Weather was perfect—overcast, 54 degrees. Nobody to enjoy the run with. Members: Dave Beardsley.



slow speeds around the refuge, with frequent stops, to assist in spotting birds.

We enjoyed some sun breaks that gave us the opportunity to see the snow covered peaks, and we drove the Lower Klamath Refuge roads in a snow storm. It was interesting to see water covered with ice in some areas and open in others. Some of the many birds we saw were: eagles, hawks, swans, geese, harriers, ducks, other water birds, night herons, ravens and a variety of smaller birds.

Sharing good lunches at Applebee's, as well as breakfast, evening hot soup, and fresh baked cookies at the Best Western, provided opportunities for people to get acquainted. A total of 34 riders took part in the trip. Members: Tom Adamcyk, Rick Ahrens, Bill Arthur, Mary Ellen Baukol, Barbara Beard, Paul Beard, Paula Beard, Keiko Bryan, Ray Cavagnaro, Sharon Cutsforth, Jack Ewing, Joella Ewing, Barbara Flanders, Dennis Flanders, Janet Jacobsen, John Jacobsen, Harriett Kelly, Barbara Payne, Don Payne, Susan Sanazaro, Pat Soussan, Elle Weaver. Nonmembers: Judy Adamcyk, Pat Bitner, Libby Botero, Hope Crandall, Betty Dickerman, May Fogg, Margaret Hadaway, Mary Hawkes, Charlotte Maloney, Jim Maloney, Judy Phelps, Bob York.

First Time Leaders Meeting
February 22, 2013
Leader: Janet Jacobsen

EIGHT INTERESTED MEMBERS and four experienced leaders shared tips and suggestions on how to have a safe trip. It was an informal way to ask questions and share concerns. We tried to balance the fun of leading with the details. Everyone left with a leader's manual. Trip leaders are the backbone of our club. It is their time, energy and enthusiasm that helps members and guests enjoy the outdoors. Members: Mike Bullington, Roberta Chord, Sharon Cutsforth, Janet Jacobsen, John Jacobsen, Jonathan Jost, Jorry Rolfe, Jeanine Taylor, Elle Weaver, Tom Woxell. Nonmembers: Mark Hougardy, Christiane Hougardy.



Bus Trips

Eagles 'N More Bus Trip
February 18-19, 2013
Leaders: Rick Ahrens & Sharon Cutsforth
Photographer: Sharon Cutsforth

A WESOME TRIP, GREAT TRAVELERS, THOUSANDS OF BIRDS, sunshine to snow storm, we had it all. Another successful trip to see birds in the Klamath Basin! These trips, scheduled every two years, are always interesting because we never know what kind of weather to expect or how many birds we will see. But, thanks to Rick Ahrens we always see birds of many species. Rick helps locate the birds, shares identification tips, explains differences within a species and brings his scope for closer views. He talked about geologic formations as we traveled along and identified mountains for us—a true nature guide. We also appreciated our driver, Jay, for being willing to drive the bus at very



Remaining 2013 Obsidian Bus Trip Schedule



English Tea at Lovejoy's

Date: Tues. March 12

Leader: Verna Kocken

Cost: \$52 members (\$54 nonmembers)

Payment: Janet Speelman by Feb. 26

WE WILL LEAVE SHOPKO PARKING LOT AT 8 AM, travel to Philomath and west to Newport, then south to Florence, with a coffee stop on the way. Lovejoy's will serve us a light tea. The light tea features one tea sandwich (4 crust-less triangles), English scone with preserves and double Devon cream, a petite dessert, and, of course, tea. To accommodate our numbers, we will split into two groups, one served at 11:30 and one at 12:30. When not at your tea time, enjoy the sights and sounds of Old Town Florence—museum, shops, (antiquing?) and the view of the estuary. At 2 PM, the bus will load and we will go south to Reedsport, then east, stopping at Dean's Creek elk viewing station. We will also stop at Elkton to check out the progress on Ft. Umpqua. At the same site is the Butterfly Pavilion and the community library. Home by 5 PM. Limit for the trip is 30. Please dress for the weather.

More Food

Date: Thur. April 18

Leader: Mary Ellen West

Cost: \$45 (\$47 nonmembers)

Payment: Barbara Payne by Apr. 12

THIS TRIP SHOWS OFF WILLAMETTE VALLEY FOOD PRODUCERS. Our first stop will be at Camas County Mill near Junction City, where grain grown by the Hunton Farm is milled. Our coffee break will be here. We will then go to Corvallis. At OSU we will get a tour of the Arbutnot Dairy Center where artisan cheeses are made. Nearby, we will visit the brew-house and winery, which is also a part of OSU's Food Science Department. Lunch will be on your own at the New Morning Deli or brown bag at the nearby Corvallis Park by the river. Our last visit will be to The Deck Family Farm near Junction City. They are meat producers. Finally, we will stop in Junction City for Lochmead ice cream. All producers will have items for sale.

Crystal Springs Rhododendron Garden & Grotto

Date: Tues. May 7

Leader: Ray Jensen

Cost: \$49 (\$51 nonmembers)

Payment: Mary Lee Cheadle by Apr. 17

AFTER A REST STOP ON I-5, we should arrive at Crystal Springs in Portland by 10:30 AM, where rhodies, azaleas, and various water fowl should be at their best. An extensive trail system up and down will require somewhat strenuous

walking. About 12 noon we will depart for lunch. Picnic areas are not available at the Garden or the Grotto, so we will probably have a sit down lunch in East Portland TBA—not included.

About 1:30 we will arrive at the Grotto, which is a 62-acre Catholic Sanctuary. The grotto itself is on the ground level. The elevator to the upper level is \$4.00 per person—\$3.00 age 65 and older, cost included. Located here are the gardens, a chapel, the monastery, a statue of St. Francis, plus a great view.

We will leave about 3:30 on I-205, to arrive in Eugene before 6 PM.

Waterfalls of the Umpqua

Date: Tues. June 18

Leaders: Verna Kocken, Ray Jensen

Cost: \$40 (\$42 nonmembers)

Payment: Mary Lee Cheadle by June 1

Southern Oregon Coast

Date: Tues. July 16

Leaders: Mary Ellen West, Rick Ahrens

Cost: \$48 (\$50 nonmembers)

Payment: Janet Speelman by July 10

NE Oregon, SE Washington Extended Trip

Date: Aug. 5 - 10 (Mon-Sat)

Leaders: Sharon Cutsforth, Don & Barbara Payne

Cost: \$730 (\$742 nonmembers)

Payment: Barbara Payne (\$150 due now, \$300 due May 15, balance due July 1)

Ashland Shakespeare Theater & Crater Lake

Date: Sept. 10-11 (Tues-Wed)

Leader: Verna Kocken

Cost: \$190 (\$194 nonmembers) (limit 25 tickets)

Payment: Liz Reanier by Aug 7

End of Summer BBQ

Date: Tues, Sept. 24 (Tues)

Leaders: Barbara & Paul Beard

Cost: \$60 (\$62 nonmembers)

Payment: Barbara Payne by Sep. 10

Fall Color Trip

Date: Tues. Oct. 15

Leaders: Ray Jensen, Mary Ellen West

Cost: \$46 (\$48 nonmembers)

Payment: Mary Lee Cheadle by Sep. 20

Obsidian Lodge for the Holidays

Date: Tues. Dec. 10

Leader: Liz Reanier

Cost: \$5 (\$10 nonmembers)

Upcoming Activities

Basic Mountaineering Class Still Has Space!

IT'S NOT TOO LATE! There's still room in the Basic Mountaineering class offered in April by the Obsidians and Eugene Mountain Rescue.

The Basic Mountaineering class consists of two classroom sessions and two weekend field trips. The first class session and field trip cover basic rock climbing skills, rappelling and scrambling up rock with a fixed line for protection. The second class session and field trip are concerned with snow travel skills such as roped glacier travel, self-arrest skills, negotiating in crevasses, and belays used on snow.

The dates for the class sessions are April 4 and 18; the field sessions are April 6 or 7 and April 20. The rock field

sessions will be held at the Skinner Butte Columns, and the snow session will most likely be held at Santiam Pass.

There will be one or two climbs offered preferentially to the participants in the class (that is, the participants will have first opportunity to sign up for these climbs). These are not included in the course fee.

The cost of the class is \$50 for Obsidian members or members of Eugene Mountain Rescue, and \$75 for non-members.

For more information contact climbs@Obsidians.org. Enrollment is limited to 20 people.

Leavenworth Washington Extended Trip

Leavenworth Extended Trip

August 19–23, 2013

Leader: Dan Christensen, Co-Leader Jim Duncan

Cost: Members \$50 Nonmembers \$55

BACK TO THE BEAUTIFUL NORTH CASCADES! This four night Extended Trip will be held in the southeast quadrant of the North Cascades near the picturesque Bavarian style mountain town of Leavenworth, WA. The Forest Service Eightmile Group Campground is located on the Icicle River, eight miles west of Leavenworth. Nearby Alpine Lakes Wilderness is said to contain over 700 lakes and ponds. The Forest Service lists 26 hiking trails within easy access of the campground. Most of the hikes are rated Moderate or Difficult, but lots of Easy options can be created out of the trail system. Certain trails, as well as several mountain roads, are open for cycling. Whitewater rafting and opportunities for scenic driving are available as well.

The group campground has potable water, vault toilets, a large, flat asphalt parking area for cars and RVs. There are good tent sites close to the river.

Campers will be responsible for their own breakfasts and lunches. Good grocery stores are available in Leavenworth. Dinner for the first three nights will be prepared on a group basis and are included in the cost of the trip. The final evening will feature a no-host group dinner at King Ludwig's Bavarian restaurant in Leavenworth, followed by an outdoor amphitheater performance of *The Sound of Music* (\$35 per ticket) for those who are interested.

This trip is limited to 18 participants. To reserve your place on the trip, sign up online, then within five days send

a non-refundable deposit of \$10 payable to the Obsidians to Dan Christensen, 505 Sweet Gum Lane, Eugene, OR 97401-7003. Please include your phone number and email address. If you would like to attend the *Sound of Music* performance, please indicate that when you send your deposit. The balance will be due June 1. There will be a pre-trip meeting in July.

Questions?

Call Dan at 343-8941 (email lddc1010@aol.com) or Jim at 343-8079 (jameslduncan@prodigy.net)



Summer Camp in the Trinity Alps—July 8-13, 2013

THE FOLLOWING ARE QUESTIONS the Camp Committee has been asked about the two-step registration process which begins St. Patrick's Day, March 17.

Q: *I looked online where I usually sign up for trips, but I can't find Summer Camp!*

A: If it's before March 17, you won't find it because it is not yet available for signups. If it's after March 17, only about eight trips are initially visible on the signup page. To see other available trips, pull down the bar to the right of **Sign Up**. Summer Camp is the very last trip.

Q: *Why do I have to complete the paper registration form as well as sign up online?*

A: The registration form has the Release of Liability (your signature), plus it provides additional information like food preferences to the Committee. And, it envelops your check!

Q: *I do not receive a paper copy of the Bulletin. How do I easily print the registration form (and not the entire Bulletin)?*

A: The registration form is available on the Obsidian website. Click on **Summer Camp** on the upper left hand side of the home page and you'll see the link.

Q: *What's the maximum number of campers?*

A: Fifty (50). That's the maximum the group site can comfortably accommodate.

Q: *Will there be a lottery if more than 50 folks sign up?*

A: No. The Committee feels that we have had enough experience with online signups that it is *first come, first served*.

Q: *Summer Camp sounds like a lot of fun, but I may have a conflict. Should I sign up now and risk forfeiting \$35 or wait until my plans become clearer?*

A: The Camp Committee wishes that we had a crystal ball and knew how many people will sign up, but unfortunately, it's impossible to predict. Our suggestion is to monitor the online signups. If it starts approaching 50, you might want to register and pay the full amount. If you cancel prior to May 31, you'll receive a refund of \$130.

Q: *If I end up on the waiting list, should I send in my payment and registration form now in hopes that someone will cancel?*

A: No, wait until your status is changed to *Signed Up* to send in the form and check. If you're patient and have the flexibility, there are almost always last minute cancellations, so that you will be able to attend Camp.

Save The Date: *Camp Rally—Friday, April 26* at the Lodge. Potluck begins at 6:30 PM and the program at 7:30. The Camp Booklets will be available at the Rally for those folks who have signed up and paid. If you're on the waiting list, you will still want to attend the Rally because we usually have last minute cancellations.

Recycled Tent!

Jan Anselmo

AFTER ATTENDING SEVERAL SUMMER CAMPS, I noticed that almost everyone had a huge car camp tent. Some were equipped with blow-up mattress, cots, tables, chairs, lamps, etc. And here I was, sleeping in my backpack pup tent. I was frequently going in and out of my car for stuff because none of it would fit in my tent. I am sure the constant closing of the car doors was annoying to my neighbors.

So during a trip to Zion this past year, my husband Rich notices a tent leaning against the garbage dump. It was packed neatly in its box. Wow—why would someone throw away their car camp tent?

We took it home and there it is—the zipper is broken. So we fixed the zipper with needle nose pliers so it would stay on its track. We then set up the tent, cleaned it out and waited for the forecasted rain shower for that day. After a heavy shower, sure enough, there were leaks in the fly. Tiny puddles of water were on the inside tent floor. Not good. So we bought some waterproofing spray to coat the fly. Since there was no more rain for the day, one of us sat in the tent while the other created our own rain shower using the hose. No

leaks! Dry tent. BIG tent! Now we could sleep comfortably in our larger tent and keep our clothing and packs in our new abode. For an investment of \$18, this was recycling at its best! Now, it may not be as fancy as some others I saw, but we cleared the world a tiny bit more of trash and it was luxury to us. Oh yeah, we slept great!



SUMMER CAMP 2013 - REGISTRATION FORM

Monday, July 8- Saturday, July 13, 2013

*Each camper must register online and complete this registration form.
Please read the information and directions on the reverse side!*

Name: _____ Phone: _____

Address: _____ E-Mail: _____

City, State, Zip _____ Age, if under 18: _____

Camp Fees:

Members:	Adults and children ages 12 and above	\$165
	Children ages 6-11	85
	Children under 6	Free
Nonmembers:	Adults and children ages 12 and above	\$195
	Children ages 6-11	100
	Children under 6	Free

Full payment must be included for **each** registration. The cancellation policy is on the reverse side. **Within 5 days** of registering online, mail the check payable to **Obsidians Inc** to:

Obsidians, Summer Camp Registration
PO Box 51510
Eugene, OR 97405

Is this your first Summer Camp? Yes No

Would you like to be considered for a Responsible Person (lead) position? Yes No

Please indicate your dietary restriction: No restrictions Semi-vegetarian (fish & chicken) Vegetarian

Do you have limitations that should be considered when the duty roster is made up (e.g., bad back, etc)?
If so, specify.

If you plan to camp in an RV, what type of vehicle is it? *Type* _____ *Length* _____ ft.

Note: Carpooling to Camp is encouraged. When you sign up, please indicate whether or not you want riders or a ride. Individuals are responsible for making their own arrangements.

RECOGNITION OF RISK AND RELEASE OF LIABILITY

I, THE UNDERSIGNED, am aware that outdoor activities can be dangerous and present occasional hazards not encountered in everyday life. I am prepared to deal with and accept all risks of this activity and associated activities as my own responsibility. I am responsible for providing my own equipment, including first aid supplies and medicines. In consideration of OBSIDIANS, INC. sponsoring and granting permission for me to participate in this activity, I release OBSIDIANS, INC., its officers, agents and members from all claims on account of my death or injury resulting from any act, or failure to act, even if negligent, during my participation in this activity, including travel to and from the activity, and any associated activities.

By your signature below, you certify that you have read and understand all the conditions listed above and on the reverse side.

Signature: _____

Date: _____

If minor is under 18, parent or guardian must sign instead.

SUMMER CAMP 2013 - REGISTRATION INFORMATION

(Complete the front side of this registration form.)

Registration/Deposit: Registration is a two step process:

- 1) Register **online** at www.obsidians.org (bottom right corner of web page). Online registration begins on Sunday, March 17.
- 2) Complete the front side of this form, *one form per person*. Within 5 days of registering online, mail it with the full amount due. You may submit one check for multiple registrations in the same envelope. Make the check payable to **Obsidians Inc** and send to:

<p style="text-align: center;">Obsidians, Summer Camp Registration PO Box 51510 Eugene, OR 97405</p>

Waiting List: The Camp is limited to 50 persons. The names over 50 will have a *Wait List* status. If you are on the Waiting List, do not mail a registration form or check until your status changes to *Signed Up*; please monitor the web-site periodically.

Cancellation Policy: The Summer Camp Committee recognizes that sometimes cancellations are unavoidable; however, due to fixed costs, and in fairness to those who may be on the Waiting List, the policy is as follows:

- ▶ \$35 (considered to be the good faith deposit) is nonrefundable.
- ▶ Registrants who cancel online by May 31 will receive a full refund, less the \$35.
- ▶ Registrants who cancel online on or after June 1, but before June 30: if your vacancy is filled, the full fee, less the \$35, will be refunded after camp. If your vacancy is not filled, no refund will be made until after all camp expenses have been paid in full. At that time, funds permitting, a percentage of your fee will be refunded.
- ▶ Registrants who cancel online on or after June 30 will not receive a refund.

Summer Camp Rally: The Rally will be held at the monthly potluck on **Friday, April 26** at the Lodge. The potluck begins at 6:30 pm; the program starts at 7:30 pm. We'll discuss camp logistics and show slides of the camp, the area, and recreational opportunities.

Booklets: A Camp booklet containing detailed information regarding the campsite, the area, what to bring, etc. will be provided to registrants who have paid in full at the April 26 Rally. Those on the Waiting List will not receive a booklet at this time.

Check-in: Campers are welcome to arrive after noon (12:00 pm) on Monday, July 8. All food will be provided beginning with dinner the first night and ending with breakfast on the last day.

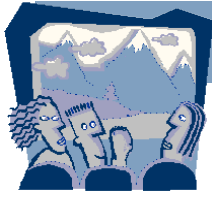
Questions: **Registrar/Treasurer** – Don Doerr 541-484-4950

donrdoerr@comcast.net

Camp CEO – Lana Lindstrom 541-683-1409

lane_lindstrom@hotmail.com

AT THE LODGE

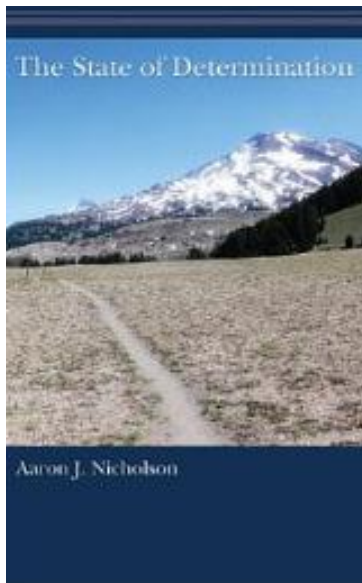


POTLUCK

Friday, March 22 at 6:30 PM

The State of Determination

AARON J. NICHOLSON HAD A MISSION: a 460-mile solo backpacking trip across Oregon without resupplying food or gear. His book, *The State of Determination*, chronicles his adventures on the trail.



March Potluck
Friday, March 22, 2013
Social hour, 6 PM Potluck, 6:30 PM Program, 7:30 PM
Obsidian Lodge

Bring your favorite potluck dish to share...along with plates, utensils and cups... plus \$1 to help cover club expenses.



ExploraTalk: Tuesday, March 26 at 7 PM

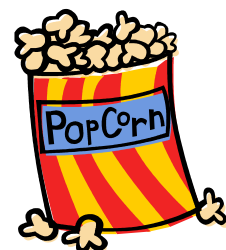
Film Night at the Lodge—with Popcorn

Kam Wah Chung (John Day) and Kolb Brothers, Grand Canyon Pioneers

Film #1: Kam Wah Chung is the name of the restored general store and pharmacy in John Day, Oregon, where herbal doctor Ing Hay and businessman Lung On lived and worked in the late 1880s. The OPB Oregon Experience film describes how the discovery of gold brought thousands of Chinese to eastern Oregon and how these two men became respected members of the John Day community. Close-up views of the general store, now a museum filled with interesting artifacts, will show how it functioned in its heyday. This will be of particular interest for those going on the Spring Basin/John Day extended trip in May.

Film #2: In 1903 Ellsworth and Emery Kolb set up a photography business on the Grand Canyon rim. For 75 years they operated the Kolb Studio, where they displayed photographs and showed amazing movies of their raft trips down the Colorado River. Their restored studio is the red house at the beginning of the Bright Angel Trail.

Many thanks to Janet Jacobson, for arranging this movie night program.



Trails Thanks Jimmy John's Sandwiches!

THE CO-OWNER OF JIMMY JOHN'S, Peter McGarty, an avid trail runner, donated and delivered gourmet sandwiches and chips to the Fox Hollow trailhead for the February 23rd Obsidian trail maintenance work party. The owner said it was his way to say "Thanks" to the Obsidians and Eugene Parks and Open Space staff for maintaining the trails. What a treat after working on the muddy trails for three hours! We thank him for his generous gift. We recommend you try the sandwiches at his store at 495 W. 7th Avenue.

Weekly Hikes and Trail Runs

Check it out online!

JANET JACOBSEN IS COORDINATING Wednesday morning 9:00 AM Amazon Headwaters/Ridgeline Trail hikes. They are now listed online for most Wednesdays in March and April. Depending on the weather and group input, the hike will begin at the Amazon Headwaters Trail to the Ridgeline Trail, cross Fox Hollow and continue on to Spencer Butte. We will hike 1 1/2 hours and then turn around. On our first Wednesday hike in February, several with an aerobic push made it to the top of the Butte. We will probably divide into several groups based on pace. This is a way to get in shape for summer hiking, to enjoy the wildflowers, and hike with others at a pace best for you. Please sign up online. If you would like to help or have questions, email bjjacobsen@comcast.net.

DAVID BEARDSLEY IS LEADING WEEKLY TRAIL RUNS for the Obsidians. Through March they are on Tuesdays at 5 PM at either Spencer Butte or Mt. Pisgah. In April this will change to Wednesdays at 5:30 or 6:00. This will allow more people to enjoy the thrills of running trails. Never the same trail twice.

Check it out online!

Janet Jacobsen & David Beardsley

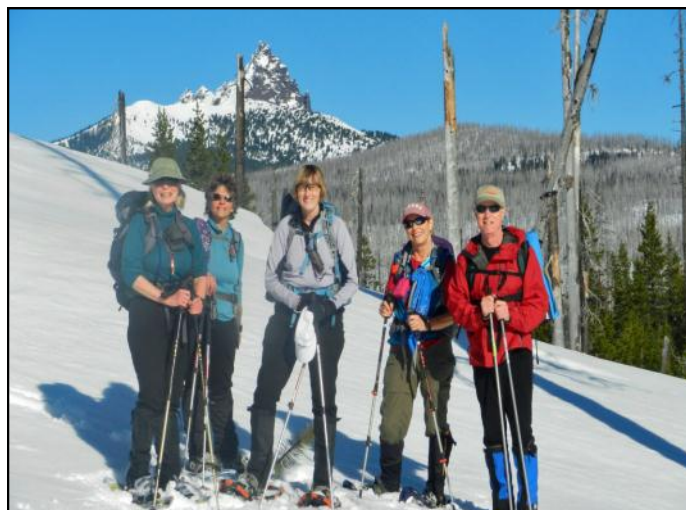


Photo by Chris Stockdale from January Circle Lake trip.

Obsidian Calendar

March

12 Tue	Leader Kick-off Meeting	Lodge
13 Wed	Ridgeline Trail Hike M Jacobsen	343-8030
16 Sat	Fawn Lake Xski D Sinnott	915-0234
19 Tue	Spencer Butte Tr Run Beardsley M	357-0630
20 Wed	Ridgeline Trail Hike M Jacobsen	343-8030
22 Fri	The State of Determination	Potluck
23 Sat	Walk, Wine And Dine Hike E Ledet	683-2603
24 Sun	Whale Watch Tour Boat Ewing	344-9197
24 Sun	Mt. Pisgah Hike M Sanders	255-2524
26 Tue	Film Night at Lodge	ExploraTalk
27 Wed	Ridgeline Trail Hike M Jacobsen	343-8030
30 Sat	Spencer Butte Tr Main M Bell	503-884-8829

April

12 Fri	Long Tom Grange Bike E Esch	338-8280
16 Tue	TBA	ExploraTalk
16 Tue	Yachats to Waldport Hike M Jacobsen	343-8030
25 Thu	Mt. Pisgah Sunset Hike M Jacobsen	343-8030
26 Fri	Summer Camp Rally	Potluck
27 Sat	Spencer Butte Trl Mnt M Bell	503-884-8829

May

3 Fri	Blacklock Point Bk Pk M Hovis	731-3412
4 Sat	Horse Rock Hike E Lindstrom	683-1409
10 Fri	Owyhee Rafting Ext Trp M Esch	338-8280
12 Sun	Yachats to Waldport Hike M Jacobsen	343-8030
17 Fri	Spring Basin Wilderness Ext Trp M Jacobsen	343-8030
24 Fri	Pisgah - Sunset/Moonrise Hike M Jacobsen	343-8030
25 Fri	Spencer Butte Trl Mnt M Bell	503-884-8829
31 fir	Astoria to Bar Harbor by Bike	Potluck

June

1 Sat	National Trails Day Hike M Jacobsen	343-8030
7 Fri	Parvin Covered Bridge Bike M Esch	338-8280
18 Tue	TBA	ExploraTalk
21 Fri	Pisgah Summer Solstice Hike M Jacobsen	343-8030
22 Sat	Crabtree Valley Hike M Sojak	525-1124
28 Fri	A Trip to Patagonia - Lana Lindstrom	Potluck
28 Fri	Macduff Mountain Hike D Jacobsen	343-8030
29 Sat	Spencer Butte Trl Mnt M Bell	503-884-8829

July

8 Jul	Trinity Alps Summer Camp Lindstrom	683-1409
22 Jul	Mt. Pisgah Full Moon/Sunset Hike M	TBA
31 Jul	Spencer Butte Trl Mnt M Bell	503-884-8829

August

2 Aug	Orchard Point Bike E Esch	338-8280
19 Aug	Leavenworth Extended Trip Christensen	343-8941
20 Aug	Mt. Pisgah - Full Moon/Sunset Hike M	TBA
28 Aug	Spencer Butte Trl Mnt M Bell	503-884-8829

September

1 Sep	Arrowhead Lake Hike D Harrison	556-3654
5 Sep	Women's Waldo Lake Water E Esch	338-8280
17 Sep	TBA	ExploraTalk
19 Sep	Mt. Pisgah Full Moon/Sunset Hike M	TBA
28 Sep	Spencer Butte Trl Mnt M Bell	503-884-8829



Photo of Ari Songer by Ari Songer at Salt Creek Falls—See trip report on page 6.

March 2013



PRESORTED STANDARD
US POSTAGE
PAID
EUGENE, OR
PERMIT 803

OBSIDIANS, INC. IS A NON-PROFIT ORGANIZATION

RETURN SERVICE REQUESTED

OBSIDIANS, INC.
P.O. BOX 51424
EUGENE, OR 97405

