

Inside This Issue

Honorary Membership	1
Obituaries	2
New Members	2
Lodge Storage Building	3
Board Notes	4
Trip Reports	5-13
Upcoming Bus Trips	13
Upcoming	14
Eugene Celebration Booth	14
In Living Color	15
Classifieds	15
Calendar	15
Picture of the Month	16

Dates to Remember

August 31	<i>Bulletin</i> deadline
September 4	Board Meeting

Complete current schedules at:
www.obsidians.org or
Register-Guard – Outdoors – Tuesday

Reminder:

No August
Bulletin

Nomination of John Jacobsen For Honorary Membership

Good day, friends

This is to address the nomination for Honorary Membership of John Jacobsen.

The Obsidian Board will recall that in 2012, Janet Jacobsen was elected an Honorary Member, and note was made that John was to follow. (Constitution permits one a year). This may be called 'extended business' by Robert's Rules and is legal by any other name. It was agreed that, the dedication of time to the Obsidians and years of service of both John and Janet be acknowledged. As the *Obsidian Bulletin* reports its history, events, activity, growth and reputation, John's work is prominent and clearly spelled out with his fine guidance and leadership...for many many years.

This includes Summer Camps to trail maintenance, to Lodge direction and care of the property, to shoveling in the dirt to computer programming. The Obsidian news stories reveal long hours spent by this resourceful engineer, serving with purpose and always a joyful spirit to benefit Obsidian members. John's enthusiasm in all of this has been an inspiration.

It has always been a source of pride for me to be an Obsidian member since the mid 1940's...and am grateful for the happy memories.

Therefore, I am very proud to nominate John Jacobsen for Honorary Membership in the year 2013. And for him to join Janet as truly, 'Mr and Mrs Obsidian'.

Sincerely,

Ray Cavagnaro

Editor's note: The above letter was submitted to the Board of Directors by Ray Cavagnaro, and transcribed by the Bulletin for publication.

Obituaries

Rachele Fiszman 1920-2013

RACHELE FISZMAN WAS AN OBSIDIAN MEMBER UNTIL JUST LAST YEAR, having first joined in 1987. The last 10 years of her membership she participated with Byways By Bus, going on 48 trips with the group. Her last bus trip was to Thomas Grist Mill in 2009. In the early years of her membership Rachele went on 26 trips, four of which were cross country ski trips.

Rachele is survived by two daughters and two grandchildren.

Editor's Note: A complete obituary can be found in the June 5th issue of The Register-Guard.

OBSIDIAN MEMBERSHIP REPORT

Active Members	439
Associate Members	19
Honorary Members	5
Junior Members	10
Life Members	15
Total Members	488

Welcome New Members

Geiser, Katie (Active)
2255 Garfield St.
Eugene, OR 97405
342-5500
katieg3@gmail.com

Huseman, Marge (Active)
755 Arcadia Dr.
Eugene, OR 97401
513-315-5952
margehuseman@gmail.com

Reinhard, David (Active)
2924 Firwood Way
Eugene, OR 97401
912-1209
dreinhard47@gmail.com

THE OBSIDIANS NOW HAS A FACEBOOK PAGE

www.facebook.com/#!/theobsidians

OBSIDIANS, INC

P.O. Box 51510, Eugene, OR 97405

Website: www.obsidians.org

Board of Directors

Elle Weaver, President
Matt Bell, Vice President
Susan Wanser, Secretary
Stewart Hoeg, Treasurer
Sharon Cutsforth, Pat Esch, John Jacobsen,
Tom Musselwhite, & Nancy Whitfield

Board meetings are held at 6 PM the first Wednesday of each month, except October when it is the Wednesday after the Annual Meeting, and no meeting in August.

Committee Chairpersons

Byways By BusLiz Reanier
Climbs.....Brian Hamilton
Concessions.....Patty McAfee
Conservation/SciEd.....Joella Ewing
Entertainment.....Susan Wanser
Extended Trips.....Chris Stockdale
Finance.....Stewart Hoeg
Librarian/Historian.... Lenore McManigal
Lodge Building..... Doug Nelson
Lodge Grounds.....John Jacobsen
Membership.....Elle Weaver
OnlineWayne Deeter
Publications.....Nola Nelson
Publicity.....Jorry Rolfe
Safety.....Pat Esch
Summer Camp.....Lana Lindstrom
Summer Trips.....Tom Musselwhite
Trail Maintenance.....Matt Bell
Winter Trips.....Anne Bonine

THE OBSIDIAN Bulletin

© 2013

Published monthly, except August and December. Articles, story ideas, letters to the editor and other editorial submissions should be emailed to:

bulletin@obsidians.org

For reprint rights, contact:

The Obsidian Bulletin

P.O. Box 51510, Eugene, OR 97405

Deadline

for September 2013 *Bulletin*
Saturday, August 31, 2013

Assembly/Mailing Team

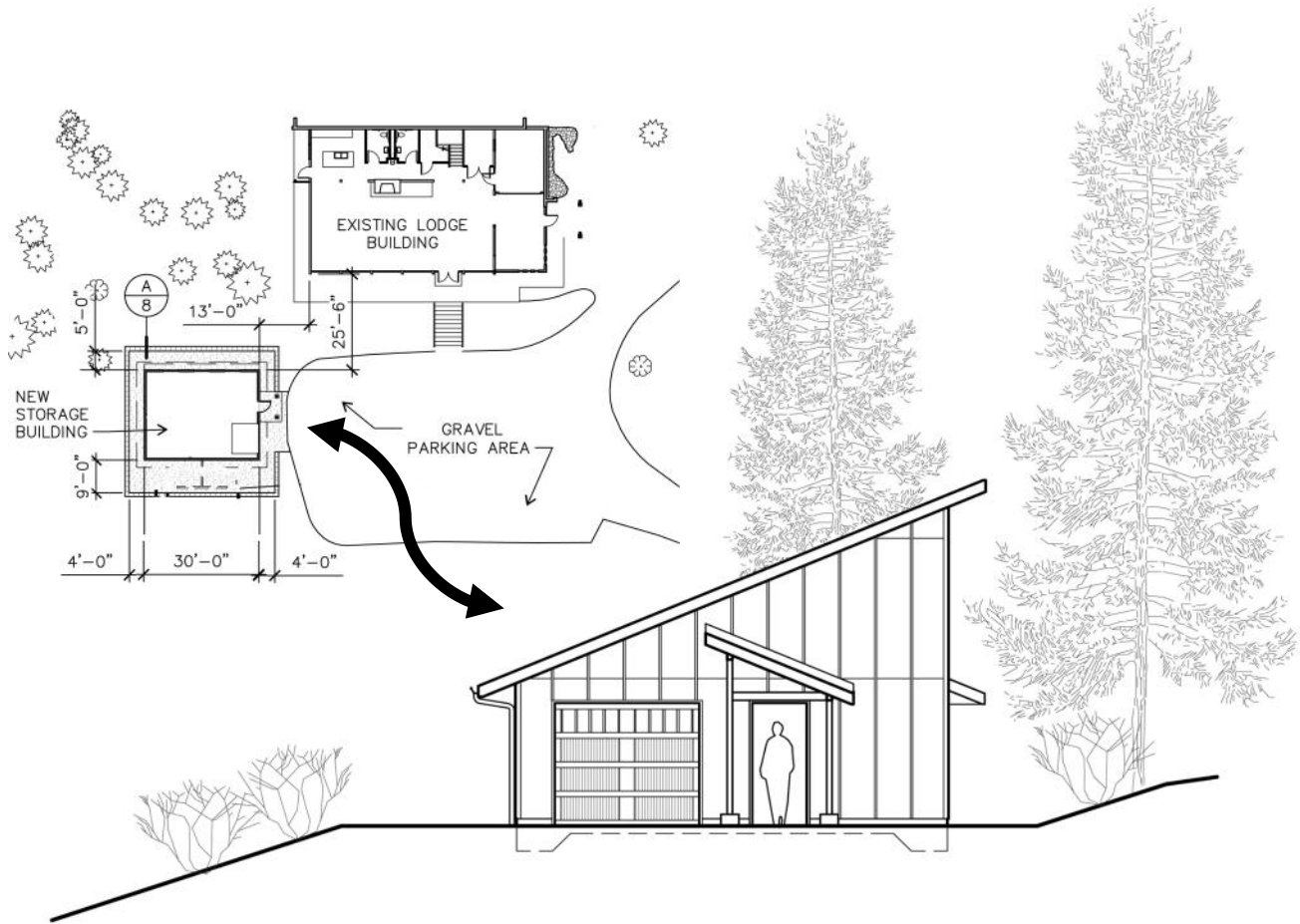
For June *Bulletin*

Assembly & Mail Manager - Lou Maenz
Assembly Team - Tom Adamczyk, Don Baldwin, Yuan Hopkins, Vi Johnson, John & Lenore McManigal and Margaret Prentice

Editorial Team

Writing & Editorial Staff - Bea Fontana, Joanne Ledet, Nola Nelson, and Ethel Weltman
Copy Editors - Nola Nelson & Ethel Weltman
Graphics Design & Desktop Publishing - Stewart Hoeg

Coming Soon (We Hope) To an Obsidian Lodge Near You



THE OBSIDIAN BOARD OF DIRECTORS at their July 3 meeting approved funding of up to \$50,000 to proceed with the construction of a new storage building to be built near our Lodge.

The new storage garage will replace two low-ceilinged, dilapidated sheds that are overflowing with Summer Camp gear, grounds equipment/supplies, and other odds and ends. It will also house other Summer Camp gear currently stored upstairs in the Lodge where it must be retrieved and restored via the Lodge stairs or a long hike up, around and behind the Lodge. There is miscellaneous equipment currently stored outdoors which would be stored inside the new building as well.

The Construction Committee consisting of Dave Beardsley, Rob Castleberry, Dan Gilmore, Steve Gunn, Brian Hamilton, John Jacobsen, Steve Johnson, and Doug Nelson have been working over the last half year locating and designing the structure. A special thank you goes to Obsidian members Brian Hamilton, an architect, and Steve Gunn, owner of Construction Focus, an estimating company, for their many hours of professional services volunteered to

move the planning along.

This building will be a significant addition to our property. Because of its location near the Lodge elements of our Lodge's style, such as its roof line and portico entrance, have been incorporated in the garage design to make it compatible with and look attractive near the Lodge.

We are currently waiting for input from a structural engineer regarding a couple issues but hope to have those resolved soon and possibly be ready to apply for a building permit by later in July. Then depending on turnaround time from the city, we might have shovels in the dirt before September.

There has been a great deal of interest shown by Obsidian members as well as Construction Committee members in doing much of the construction work ourselves. We have a number of skilled members who are willing and capable of doing what we need to do to build the storage garage. If anyone is interested in helping with this project, please contact me at: johnwjacobsen@comcast.net.

John Jacobsen, Construction Committee Chair

Board Notes

By Susan Wanser

President Elle Weaver called the meeting to order. Other Board members present: Matt Bell, Sharon Cutsforth, Pat Esch, Stewart Hoeg, John Jacobsen, and Susan Wanser. Also present were: Anne Bonine, Wayne Deeter, Joella Ewing, Brian Hamilton, Kathy Hoeg, Lana Lindstrom, Lenore McManigal, Doug Nelson, and Jorry Rolfe.

The Board approved the minutes of the June 2013 meeting.

Treasurer's Report: Stewart Hoeg reviewed the Budget-vs-Actual Report and the Balance Sheet. The Board approved payment of the bills.

COMMITTEE REPORTS

Summer Trips (Tom Musselwhite): As of July 1, 134 summer activities have been scheduled. Year-to-date, that's 12 activities over 2012. This year's trips include: 18 trail runs, 4 backpacks, 95 hikes, 12 bikes, and 2 canoe/kayak trips (and 3 leader orientation classes).

Climbs (Brian Hamilton): Three climbs have been completed since the last Board meeting. Thirteen climbs remain scheduled between July 6 and September 21.

Trail Maintenance (Matthew Bell): There was one outing in June. We worked independently to improve the West Trail for the anticipated increase in use while the Main Trail is closed this summer. Clara Emlen did an exquisite job cleaning the concrete steps.

Highways and Byways By Bus (Liz Reanier): The June 18 North Umpqua River Bus trip was enjoyed by 29 people.

Summer Camp (Lana Lindstrom): Two more folks cancelled from Summer Camp in June; two folks on the waiting list were thrilled to be attending! Managing the waiting list online is *much* easier and more efficient for all compared to the manual method!

Conservation, Science, & Education (Joella Ewing): Seventeen people attended the June ExploraTalk on Hiking Astronomy. The next program will be a gathering at Condon School on September 17 to watch the Swifts descend into the chimney.

Publications (Nola Nelson): The June issue of the *Bulletin* was 16 pages and 255 copies were printed.

Entertainment (Susan Wanser): Sixty-five people attended Lana's presentation about her trip to Patagonia. The next potluck will be on Sept. 27 and will feature Bob Welch presenting *Cascade Summer: Waldo and I on Oregon's PCT*. There will be a special social hour before the potluck to encourage people to come share tales of their summer adventures.

Membership (Elle Weaver): Three new member applications will be presented.

Publicity (Jorry Rolfe): We paid \$60 for Eugene Celebration booth fee. Our booth will need member volunteers for setting up and booth tending August 24 -25. There were two Get Acquainted hikes on June 30. Thanks to members Roberta Chord, Autumn Edwards, Clara Emlen, Yuan Hopkins, John and Janet

Jacobsen, and Ruth Romoser. Some guests continue to have a difficult time locating our lodge. In future, we need to post a helpful directional sign at Central and Spring intersection. Many thanks to Darko, Janet J. and Chris Stockdale for getting our information to the public by way of listings, posters and flyers which are distributed each month.

Concessions (Patty MacAfee): Concessions sold items at the June ExploraTalk and potluck. Also, a shipment of medium women's Sport Tek t-shirts arrived in time for Summer Camp.

Online (Wayne Deeter): There are now 965 photos in 90 albums in the online photo gallery. Our Facebook page now has 201 *likes*, up by eight from last month.

Library/Historian (Lenore McManigal): All of the activities printed in the June *Bulletin* have been recorded. Activity sheets for the new members elected to the club at the June meeting were also created.

Lodge Grounds (John Jacobsen): We had two work parties in June. June 12—Mowing, weed whacking, weeding, pruning and cleanup for Moffitt memorial and SciEd night. Thanks to Jim Whitfield, Rob Castleberry and Larry Dunlap for their help. June 27—Mowing, weed whacking and cleanup for potluck and get acquainted hikes. Thanks to Jim Whitfield for his help. I noticed another minor incident of vandalism around the Lodge recently. A brick had been thrown at the Summer Camp's water tank that is stored near the rear door to the Lodge. No damage was done, but I could just see the imprint of the brick in the dust of the tank. We have had other minor things of this nature that could easily be more serious if the targets were windows and such. When we get the storage garage built and paid for, I think it might be time to start discussion of security fencing around (or at least in front of) the Lodge property.

Safety (Pat Esch): Three First Aid Kits have been readied for Summer Camp.

OLD BUSINESS

John Jacobsen presented drawings for the new storage shed/garage along with a *Statement of Probable Cost*. He plans to apply for the necessary permits in the near future. John and his committee believe that much of the work on the building will be provided by volunteers, and there was some discussion as to how to cover the issue of liability for the volunteers while working on the building. The Board approved up to \$50,000 for the building of the new shed.

NEW BUSINESS

The Board approved changes to the Summer Camp Bylaws. It is now no longer necessary for there to be two signatures on checks greater the \$500.00.

The Club received two donations, in memory of Bep Fontana and Dick Moffitt.

ANNOUNCEMENTS

The next Board meeting will be on Sept. 4 at 6:00 PM.

Trip Reports & Other Activities



Hikes

Trestle Creek Falls

May 18, 2013

Leader: Tom Musselwhite

Photographer: Darko Sojak

Hike: 5.6 miles, 1,000 ft. (Moderate)



TRILLIUM SEEM TO HAVE COME AND GONE. Instead, we encountered a few wild rhodies in bloom, Siskiyou iris, and diverse wildflowers (see online album)—more than I can name. Thanks to Darko for the great photos. We made it to the lower falls thanks to a step that has been carved into the large tree that fell, blocking access, two winters ago. The trail was in great condition, with signs of recent trail maintenance. Several of us remarked on the low water flow at the upper falls. Members: Hope Crandall, Tom Musselwhite, Sarah Praskievicz, Darko Sojak.

Eula Ridge Conditioning Hike

May 19, 2013

Leader: Marci Hansen

Hike: 9 miles, 3,300 ft. (Difficult)

DALEN, TED, DAPHNE, JEANINE, DANNI, AND I met at South Eugene at 8 AM. We were hiking by about 8:45. Ted turned around about 3/4 of a mile in. He said he felt like he was going too slowly. Luckily he drove, so he was able to go home. It rained a little on the way up. There was no snow anywhere on the trail or the mountain. The group was well matched: it felt like we were moving at a quick pace. The day stayed cloudy for the entire hike, about 50 degrees. We

sat at the top and had a quick lunch, less than 10 minutes because it was chilly. The entire hike took about 4 hours 40 minutes. We all crammed into my truck for the drive back to South Eugene. Members: Marci Hansen, Danneille Harris, Daphne James, Jeanine Taylor, Dalen Willhite. Nonmembers: Ted Glick.

Mt. Pisgah - Sunset/Moonrise

May 24, 2013

Leader: Janet Jacobsen

Photographer: Cindy Rust

Hike: 3 miles, 1,000 ft. (Moderate)

A RAINBOW EMERGING FROM THE HILLS around Mt. June and Hardesty greeted us when we reached the summit. We kept turning around to view the 8:42 PM sunset, the rainbow, and the hidden 8:25 PM full moon rise. However, the eastern sky was dark with clouds blocking out the moon. Back down by the gate, we lingered to view Mercury, Jupiter and Venus in the western sky. By then, we could see moonlight filtering through the clouds. With such a gloomy weather forecast, our successful celestial evening was a surprise. Check out the photos posted on the website gallery. Members: Hope Crandall, Carl Hassman, Janet Jacobsen, Holger Krentz, Verlean McCoy, Cindy Rust, Darko Sojak. Nonmembers: Dana Furgerson, Bill Watson.



Ridgeline Trail

May 26, 2013

Leader: Janet Jacobsen

Hike: 6.2 miles, 900 ft. (Moderate)

DAVE PREDEEK, OUR MUCH APPRECIATED NATURALIST, pointed out a hemlock tree, coral root, native and nonnative blackberry, a ponderosa pine, and much more. He answered question after question and we still completed the hike and car shuttle in 3½ hours. Obsidians can talk and still move at a fast pace! Members: Don Cross, Lisa Grissell, Janet Jacobsen, Dave Predeek. Nonmembers: Tommy Young, Diane Dauble.

Mission Park/Iris Gardens

May 27, 2013

Leader & photographer: Joe Sanders

Hike: 4.7 miles, 0 ft. (Easy)

WHETHER BECAUSE OF MEMORIAL DAY MONDAY being part of a larger holiday weekend—with people away—or because of threatened rain on the day of our outing, or because my term *children welcomed* knocked back some who would not want to be hiking with young children present, the numbers who had signed on for this unique excursion were minimal. But the experience we shared was large. We walked on tranquil paved bike paths with occasional big puddles—but no cyclists—as well as a virtually deserted hike trail through the huge Willamette park, with only the sound of wind in the trees. The umbrellas we'd brought were largely unnecessary. The extra dry clothes for back-up protection at the event's ending, remained in their bags. We'd planned lunch after moving to the Iris gardens, but succumbed to our hunger while still in the park, the adults eating at a comfortable picnic table and Roberta's three high-spirited grandkids cavorting around us. Later, after driving five miles to Shrein-



er's Iris gardens, the skies did open, but any who objected to the rain could take shelter under a huge tent erected specifically for this weekend's festivities, sharing space with a traditional jazz band playing somewhat frumpy Dixieland and big band era offerings. Festive! And when the sun did soon enough clearly come out (for the first time, that day) the Iris—augmented by clematis, dogwood, columbine and lupines—preened and showed off their rainbow colors. For the serious flower photographer like yours truly, this was the photographer's prayer answered: the intimacy of fresh rain drops on the large flower petals, made jewel-like in the bright sun! But as a 'separate reality' to these mature attractions—for those sensitive to it—was the parallel opportunity to experience this day through the eyes and spirit of a six-to-ten year old: examining slugs 'n' bugs along the hike paths, trade off the carrying of the backpack, ride the funky little ferry at the North End of the Park and ... blow some bubbles, and see where the wind takes them. Members: Roberta Chord, Don Cross, Autumn Edwards, Chyanne Edwards, Trenton Edwards, Becky Lipton, Joe Sanders.

Amazon Headwaters/Spencer Butte

May 29, 2013

Leader: Janet Jacobsen

Hike: 6 miles, 1,300 ft. (Moderate)

SURPRISE! We missed the 90% chance of precipitation and enjoyed the remaining 10%. Members: May Fogg, Janet Jacobsen. Nonmembers: Gary Spizizen.

Ridgeline Trail Celebration

June 1, 2013

Leader: Janet Jacobsen, Ass't: Jorry Rolfe

Hike: 5.1 miles, 700 ft. (Easy)

OUR RIDGELINE HIKE FOR GUESTS was the first activity for the Ridgeline Celebration and National Trails Day. At 8:00 AM, we shuttled guests from the Spencer Butte parking lot to Spring Blvd. trailhead to hike to the top of Spencer Butte and back to the parking lot and the celebration. Sunshine and blue skies made it a perfect day to celebrate the trails. Members: Janet Jacobsen, Jorry Rolfe, Darko Sojak, Elle Weaver. Nonmembers: David Reinhard, Bill Watson, Tommy Young, Gary Spizizen, Diane Dauble.

Tire Mountain

June 2, 2013

Leader & photographer: Chris Stockdale

Hike: 7.6 miles, 800 ft. (Moderate)

THE PROMISED SUNSHINE took its time to make an appearance although the swirling mists and drops of condensation falling from the trees did not detract from the beauty of this trail. Numerous flowers were beginning to bloom, including trillium, fawn lily, plectritis, larkspur, indian paint brush, balsam arrowroot and others. The temperature on top of Tire Mountain was warm enough for the group to linger over lunch before heading back to the cars. Finally, the sun showed up and we were treated to great views of Diamond Peak. Thanks to Lyndell, Joe and Betty for driving. Members: Jan Anselmo, Dan Christensen, Lynda Christiansen,



May Fogg, Betty Grant, Joe Sanders, Chris Shuraleff, Chris Stockdale, Charlie Van Deusen, Lyndell Wilken. Nonmembers: Juliana Cichy, Malissa Bare, Becca Puleo.

Amazon Headwaters/Spencer Butte

June 5, 2013

Leader: Janet Jacobsen

Hike: 6 miles, 1,300 ft. (Moderate)

NONMEMBER, TOMMY YOUNG, AND I kept a fast pace to the top of the Butte. On the way down to the tree line, we followed the orange marks for the reroute project that will close the trail later this summer. Tommy's membership application was approved at the Board meeting later that day. Welcome! Members: Janet Jacobsen. Nonmembers: Tommy Young.

Silver Falls State Park - Trail of Ten Falls

June 7, 2013

Leader & photographer: Betty Grant

Hike: 9 miles, 800 ft. (Moderate)

A PERFECT DAY OF WARM SUNSHINE and gentle breeze provided the background for this astonishing waterfalls circuit. Our small group of four had ample time for conversation, quiet, walking, sampling tart salmonberries, enjoying the wildflowers and lunching next to Twin Falls. Members: May Fogg, Betty Grant, Susanne Twight-Alexander. Nonmembers: Karen Sieradski.



Heceta Head Lighthouse

June 8, 2013

Leader: Pat Soussan

Hike: 6 miles, 500 ft. (Moderate)

WE WERE A GROUP OF FIVE with California connections that arrived at Washburne beach to be greeted by a temperature of 53 degrees and windy conditions. After putting on wind breakers and fleece jackets, we made quick introductions and set off along the sand. Before heading up the Hobbit trail, we were shedding layers and couldn't have had bet-

ter weather for the remainder of the day. We admired the beauty of the Oregon coast during our hike from various vantage points. The lighthouse renovations have been completed and today was the official opening, but there were no tours available for us. There are new interpretive signs, as well as souvenir t-shirts and magnets available for purchase. We ate our lunch at the lighthouse grounds while basking in the warm sun and, thankfully, were sheltered from the wind that was still blowing on the north side of Heceta Head. Thanks to Sandra, Maura, Andy and Brian for the interesting conversations and making the hike such a pleasant trip. Members: Sandra Larsen, Andrew McIvor, Brian Popowsky, Pat Soussan. Nonmembers: Maura Conlon-McIvor.

Craig Lake

June 9, 2013

Leader: Jim Whitfield

Photographer: Holger Krentz

Hike: 6.5 miles, 1,000 ft. (Difficult)

OUR GROUP OF ELEVEN met at the Thurston Albertsons and



headed east up the McKenzie. Arrived at trailhead and discovered downed trees blocking access to the parking area, so parked next to the old Cascade Lodge. We were greeted by the local mosquitoes, so didn't waste much time hitting the trail. More fallen trees since last year, so this will probably be the last trip on this section of trail. Once again, there was a nice breeze that kept the mosquitoes at bay and the temperature down. Snow covered the trail in places and required some searching to continue. Lunch at the lake, after which Janet and Rob went swimming. No one else was inclined to join them. It was a nice uneventful trip on a beautiful sunny day. Special welcome to new member Patty Morrow on what I believe was her first trip as an Obsidian member. Members: Rob Castleberry, May Fogg, Lisa Grissell, Janet Jacobsen, Daphne James, Holger Krentz, Patty Morrow, Susan Sanazaro, Diane Schechter, Chris Shuraleff, Jim Whitfield.

Browder Ridge

June 9, 2013

Leader: Tom Giesen Ass't: Brian Hamilton

Photographer: Darko Sojak

Hike: 8.4 miles, 2,200 ft. (Moderate)



WE HAD AN UNEVENTFUL TRIP with 7 hikers. We encountered snow drifts in two places, but they were not much of a problem; most of us had trekking poles. We reached the uppermost ridge and six of the seven summited. Vegetation growth in the upper meadows was in a very early stage, needed 2-3 weeks (IMHO) to bloom. The trail is in good shape with the exception of perhaps 6-8 deadfalls across the trail. However it is passable without much trouble. Members: Tom Giesen, Brian Hamilton, Dick Hildreth, Kate Parrish, Darko Sojak, Chris Stockdale. Nonmembers: Amy Cook.

Amazon Headwaters/Spencer Butte

June 12, 2013

Leader: Janet Jacobsen

Photographer: David Reinhard

Hike: 6 miles, 1,300 ft. (Moderate)

TIGER LILIES STANDING UPRIGHT here and there on the trail added the color for our weekly hike to the top of the Butte. A white-looking coral root was later identified as



‘phantom orchid’, *Cephalanthera austini*. We had no trouble identifying poison oak for Anna Gerner, a U of O student on her first hike with the club. May Fogg and I signed membership applications for David Reinhard and Stephanie Hamington. Members: May Fogg, Janet Jacobsen. Nonmembers: David Reinhard, Stephanie Hamington, Anna Gerner.

Crescent Mountain

June 16, 2013

Leader: Jim Woodard

Hike: 9.3 miles, 2,425 ft. (Moderate)

ELEVEN ENTHUSIASTIC HIKERS arrived at the trailhead at 9:45 AM. The weather was partly cloudy and about 70 degrees. The first mile was a pleasant, cool hike to Maude Creek. The next mile and a half the forested trail took a steep incline. The forest floor was covered most notably with bunchberry in full bloom. As we entered the meadows at two and half miles the trail was easily visible as the bracken fern was only just beginning to come up from its winter sleep. Many of the wildflowers that inhabit the area were not yet in bloom, but we did find larkspur, bleeding hearts and the first of the soon-to-be-abundant Indian paintbrush and bear grass. After a mile or so of gentle incline through the meadows, we entered a stand of mountain hemlock and subalpine fir. After crossing a tiny patch of the rapidly dwindling snowpack, we began the last half mile or so of steep incline up the ridgecrest trail, arriving at the summit at just after noon. We stayed at the summit nearly an hour for a leisurely lunch. The view of the Cascade Mountains from Hood to Diamond Peak was stunning, even though the peaks of Mt. Hood and Mt. Jefferson were obscured by developing thunder clouds to the east. There was a slight haze so the visibility wasn't quite good enough to see Mt. Adams. Three Fingerted Jack and Mt. Washington were in full view as were the peaks of the Three Sisters and Diamond Peak. As we began the descent to the trailhead, a moderate breeze kept us pleasantly cool. We arrived back at the trailhead at 2:50 PM. Members: Jane Bartell, Lisa Grissell, Steven Johnson, Holger Krentz, Gary Spizizen, Chris Stockdale, Jeanine Taylor, Jim Woodard. Nonmembers: Tom Giesen, Nicole Mitchell, Jason Woodard.



Trail Running

Ridgeline Trail

May 1, 2013

Leader: Dave Beardsley

Trail Run: 5.7 miles, 1,000 ft. (Moderate)

TRAIL RUN #12. Ridgeline Trail end to end (more or less). Ken, Cal, Sheila and I met at the Mt. Baldy trail head and walked up to the top so that we could begin running at the Ridgeline Trail marker post. This cuts off a small section of the trail from Spring Blvd that is not very interesting. We ran back to the parking lot, up Dillard Road to the trail that connects to Fox Hollow Road. We then ran across the north face of Spencer Butte to the north Willamette trail-head. Then across the road to the final leg up and over the 'summit' of Blanton Heights to the parking lot where Patti was waiting with a car shuttle back to Dillard. Warm and sunny weather. Sheila brought Sweet Life pastries to enjoy once we made it back to our cars. Members: Dave Beardsley, Ken DenOuden. Nonmembers: Sheila Guilder, Calvin Beardsley.

Mt. Pisgah

May 8, 2013

Leader: Dave Beardsley

Trail Run: 5 miles, 1,000 ft. (Moderate)

TRAIL RUN #13. Mt Pisgah alone. Ran from main parking lot up face trail #17 to #7 at saddle, then up #3 to new trail (#34?) to #4. Turned south on #4 up steep fire lane to its intersection with the main trail #1 at the saddle between the middle butte and the south butte. Ran up to summit then down *West Face Direct* to #3 then headed north to #17 and back to the parking lot. Ken, Sheila, Katie and Liz unable to make it at the last minute—made for a lonely but satisfying evening on the mountain. Still nursing bruised (cracked?) ribs from tumble on run #12. OK going uphill, but hurting running down. Perfect weather. Members: Dave Beardsley.

Mt. Pisgah

May 15, 2013

Leader: Dave Beardsley

Trail Run: 5 miles, 1,000 ft. (Moderate)

TRAIL RUN #14. Mt Pisgah from the east. Sheila and I ran from the east side parking lot up Trail #2 to the summit and back with minor loop off the top down the fire lane. Beautiful day for a run, hardly anyone on the east side. Members: Dave Beardsley. Nonmembers: Sheila Guilder.

Ridgeline Trail

May 22, 2013

Leader: Dave Beardsley

Trail Run: 3 miles, 500 ft. (Moderate)

TRAIL RUN #15. Cal and I started from the Martin Way parking area and ran up the Martin Trail to the Fox Hollow parking area, then across to Dillard Road on the Ridgeline Trail, then half a mile north on the road to the Powerline trail back down to the Martin Way parking area. Nice conditions for a trail run—rainy and cool. Members: Dave Beardsley. Nonmembers: Calvin Beardsley.



Bike **Trips**

Parvin Covered Bridge

June 7, 2013

Leader: Patricia Esch

Bike: 25 miles, 250 ft. (Moderate)

WE HAD SUNNY WEATHER for our ride, and a little too warm down in the Middle Fork valley away from the breeze. There was very little traffic so we could enjoy looking around. Lots of roadside poppies, but no oreo cows in sight. After crossing Hwy 58 and going through Dexter, we zipped down Parvin Road and at the bottom got a good view of the infamous Parvin Butte with a crane on top. The covered bridge, our first goal, was impressive and still looking new with Anthony Creek babbling below. We returned to Elijah Bristow Park, our second goal, and had a relaxed lunch. The guys sunbathed and the gals sat around the picnic table and talked. After puffing up the hill that had been so much fun to ride down at the beginning, we finished our ride in Pleasant Hill. Members: Anne Bonine, Barbara Bruns, Patricia Esch, Kathy Hoeg, Moshe Rapaport, Joe Sanders.

Tour of the Solar System

June 13, 2013

Leaders: Margaret & Richard Essenberg

Bike: 11 miles, 100 ft. (Easy)

SINCE THE NATIONAL WEATHER SERVICE'S RADAR IMAGES indicated that the rain, to which the voyagers awoke, would finish passing over Eugene by mid-morning, we gathered with rain gear at the Sun in Alton Baker Park. We toured the inner planets, stopping at each to contemplate its size, atmosphere, temperature, and distance from the still-visible Sun. Then we crossed the Willamette River via the DeFazio Bridge and journeyed to the gas giants, stopping at each to consider its size, moons, rings, and increasingly remarkable distance from the Sun. At Pluto, Richard explained why it has been reclassified as a dwarf planet and showed us pictures of several of its recently discovered peer dwarf planets. We crossed the Owasso Bridge, stopped for soup and coffee during a brief downpour, then returned via the left bank of the river to the Sun. Members: Margaret Essenberg, Richard Essenberg, Helen Martz, Barb Revere, Pat Soussan. Nonmembers: Lei Lu.



Climbs

Diamond Peak, Graduation Climb

May 11, 2013

Leader: Danneille Harris

Climb: 8 miles, 3,750 ft. (Difficult)

NINE CLIMBERS GATHERED at the Thurston Albertson's for the first of this year's Climb School graduation climbs. Most were graduates doing their first mountaineering summit. Good weather was forecast and all were excited to put their new climbing skills to the test. We piled into two vehicles and headed up Hwy 58 to the trailhead. We greeted fellow Obsidian Brian Hamilton and his dogs, there for a solo ascent. The trail was free of snow until just before the plateau and remained sparse until well up the ridge. Once off the trail, the lack of snow occasionally slowed us down as we climbed over logs and pushed through the low brush. Further up the ridge we made better time kicking in steps and occasionally crossing bare rocky patches. At the south summit, one climber opted to sit and rest in a well protected cubby with a snow bank on one side and large rock on the other. Most folks left their snowshoes here—we had not used them. On the ridge between the south and main summit, we passed Brian headed back down. It was fun watching the smiles on everyone's faces as they took in the great views on their first summit. The team took time to eat and take lots of pictures before going back down. A few chose to glissade occasionally and we passed several other climbers headed up. Once below tree line, we paused occasionally to check the compass and were soon back on the trail. We made quick time back to the cars, arriving about 8 hours after we began. On the way home, we stopped at the Dairy Queen in Oakridge for some well deserved treats. It was a good time with a fun group of enthusiastic climbers. Thanks to Charlie and Rick for driving. Thanks to Rick for assisting and being trail sweep. Members: John Cooper, Charles Couture, Danneille Harris, Rick Harris. Nonmembers: Iley McCready, Daniel Hartnell, Bruce Tufts, Walter Hurst, Amanda MacLeod.

Mt. St. Helens

May 12, 2013

Leader: Marci Hansen

Climb: 9 miles, 4,600 ft. (Difficult)

DUE TO A DUBIOUS WEATHER REPORT, we decided to move the trip to Saturday, May 1, instead of Sunday. Ivan, Maria, Beth, and Shellie and I met at the trailhead at 5:30 AM and were hiking by 5:50 AM. The mountain was crowded and had a festive, party-like feel. We heard from a rang-

er that there were 600 permits issued that day. The weather was partly cloudy and about 40 degrees when we began. Our group was well matched, no one was too fast or slow. We summited exactly 5 hours later at about 11 AM. There were at least 100 people at the summit. We never used crampons or snowshoes, though we carried them. The skies were clear, we had an AWESOME view down into the crater and of Adams, Rainier, and Hood. On the way down, we glissaded a lot. The snow conditions were perfect! It took us 2 hrs, 45 min to descend. The weather stayed warm and clear. It was really a perfect day. Members: Marci Hansen, Beth Machamer, Ivan Paskalev, Shellie Robertson. Nonmembers: Maria Gulemetova.

Mt. Hood

June 2, 2013

Leader: Brian Hamilton

Photographer: Julie Polhemus

Climb: 7.2 miles, 5,200 ft.

WE BEGAN DISTRIBUTING GROUP GEAR at 11:30 PM Saturday night, finished loading back packs, and put on boots for a 12:30 AM start. Having arrived at the trailhead an hour earlier, we hardly had time for any sleep that night. From the beginning, there was a fierce, cold wind with 35 mph



gusts. After five hours of climbing, we were at the bottom of Devil's Kitchen where we tried to get out of the wind for a short rest behind a round, manmade snow wall. The temperature was 20 degrees. Looking ahead, we could see a few climbers passing the bergshroud on the east and ascending through the Pearly Gates, but the 12-foot-wide chute looked too steep and icy for our liking. We divided into two rope teams (the jackrabbits and the normal people) for the traverse west to the bottom of the Old Chute. Crossing the traverse meant dodging small chunks of ice kicked loose by climbers or falling from the crenellated walls above. It was best to be a jackrabbit in this stretch. Setting pickets for snow anchors for protection in the chute helped ease our minds and nobody slipped to give the system a test. We reached the summit by 8:30 AM, where it was far

too cold and windy to spend much time. There must have been 200 climbers on the route that day, but we did not experience many delays waiting for others. It was like a smoothly operating assembly line. We descended straight down from the Old Chute to the Hot Rocks, and then held our breath while crossing back over to the hog'sback to avoid the stink of sulfur released from the fumaroles. Upon reaching the hog'sback, the sun was well up, the winds had calmed, and we were cooking in our warm clothes. We shed layers and crampons for a nice descent with several opportunities for glissading. The long day, warm sun, and lack of sleep began to take their toll as we slogged through soft snow next to the groomed ski runs during the final two hours. We reached the vehicles at 12:30, making it a 12-hour, car-to-car climb. After removing boots, packs, and other gear, we had a short rest before beginning the most dangerous part of the trip which was the long drive home while trying to stay awake. I'm happy to report that we all survived that part too! Members: Brian Hamilton, Danneille Harris, Julie Polhemus, Randall Sinnott. Nonmembers: Jeffery Gordon, Alexander Ellis.

Mt. Thielsen, Graduation Climb
June 8, 2013
Leader & Photographer: Sue Sullivan
Climb: 10 miles, 3,800 ft.

WHEN JOHN MOWAT AND I SCOUTED the peak on the Tuesday before the climb, there was a lot of snow on the



route, and a returning climbing party reported that the gully just below Chicken Ledge was choked with ice. They reported that they had to turn back for lack of crampons, and they had used ice axes in several places on the ascent. So, as a precaution, the group headed out with ice axes and I was prepared to put a rope up below Chicken Ledge if necessary to get through that spot. However, four days of warm weather and sunshine made the story completely different when we went up on Saturday. The snow on the lower part of the ridge actually made the ascent (and descent!) easier than usual, and the ice had all melted out of the gully. We were practically the only people on the mountain in windless, sunny and warm weather. A fixed line was put in from Chicken Ledge to the summit block, and we enjoyed the view for a few minutes before beginning the descent. All in all a fine day! Members: Sue Sullivan, Dalen Willhite. Nonmembers: Chris Melton, Bill Lowder, Marge Huseman, Amanda MacLeod, Bryce Mason.



Trail Maintenance

Spencer Butte Trail Maintenance
April 27, 2013
Leader: Matthew Bell
Trail Maintenance: 3 miles, 500 ft. (Moderate)

OUR WORK TO IMPROVE THE TIE TRAIL continued this month. After meeting up at the Fox Hollow trailhead we hiked up the Tie Trail to continue to clear and improve drainage. Our group of volunteers worked to clean the drainage ditches on the uphill sides of the sections of raised turnpike as well as clear the downhill drainage channels. This work included Jim and Janet working very hard to try to re-establish drainage that had multiple logs fall on it during the bad winter storms during the past few years. Dan worked to bury rocks in a wet spot of the trail to create a surface that will shed water rather than collect it. Autumn, Chyanne, and Roberta worked to de-berm the outside edges of the trail so that water will drain off and not be caught, causing puddles and mud holes. We worked along the Tie Trail all the way to the junction with the main Spencer Butte Trail, getting the trail in pretty good shape for the summer and early fall. Members: Jennifer Baer, Matthew Bell, Roberta Chord, Autumn Edwards, Chyanne Edwards, Clara Emlen, Dan Gilmore, Janet Jacobsen, Dave Predeek, Pat Soussan, Jim Whitfield. Nonmembers: Ann Dittmer, Casey Allbritten.

Spencer Butte Trail Maintenance
May 29, 2013
Leader: Matthew Bell
Trail Maintenance: 2 miles, 500 ft. (Moderate)

FOR OUR FIRST EVENING OUTING we had a special task. We salvaged plants from along the new summit trail route to help with the replanting and restoration projects that will follow the project. The bulk of our group headed up the main trail at 5 PM. with Christer LaBrecque of the Parks and Open Space Division. Another separate group headed up the West Trail at 5:30 and by the time we reached the top, the first group had finished the salvage work. Our groups united, we hiked down the main trail picking up litter along the way. Back at the trailhead, we worked to put the salvaged plants in pots. Members: Matthew Bell, Rob Castleberry, Roberta Chord, Autumn Edwards, Trenton Edwards, Clara Emlen, Dan Gilmore, Janet Jacobsen, Todd Larsen, Pat Soussan, Jim Whitfield.

Spencer Butte Trail Maintenance

June 26, 2013

Leader: Matthew Bell

Trail Maintenance: .5 miles, 200 ft. (Moderate)

FOR THIS MONTH'S OUTING we worked independently to prepare the West Trail in Spencer Butte Park for its anticipated increased use this summer while the main trail is closed. Our stalwart Obsidian volunteers were joined by two nonmembers, Nathaniel and William, who were interested in finding out about the club but ended up being put to work instead. We hiked up the West Trail, clearing drainage, placing brush to help keep illicit trail and shortcuts from continuing to form, pounding in protruding rebar, burying exposed cable, and cleaning and improving the steps. As a special treat, Autumn and Roberta were able to watch a deer pass by and use the trail they'd just been working on. Clara did an exquisite job cleaning off the concrete steps at the trailhead and also removed blackberries along the parking lot. Members: Matthew Bell, Roberta Chord, Autumn Edwards, Clara Emlen, Dan Gilmore, Janet Jacobsen, Todd Larsen, Jim Whitfield. Nonmembers: Nathaniel Eagleson, William Rike.



Bus Trips

North Umpqua Bus Trip

June 18, 2013

Co-Leaders: Verna Kocken & Ray Jensen

Photographer: Sharon Cutsforth

ON TUESDAY, JUNE 18, twenty nine Obsidians and guests took a bus trip up the North Umpqua River. Leaving from Shopko promptly at 8 AM, we stopped at Whistler's Bend Park, just west of Glide, for our morning coffee break. We had easy access to the riverfront and beautiful views of the river, park and adjacent hills. Our next stop was the Colliding Rivers at the entrance of Glide. Here

is a unique situation of rivers intersecting head-on. Little



River flows under the highway bridge to collide with the North Umpqua at this view point. Sign boards tell of Indian history at this spot, and the 1938 CCC (Civilian Conservation Corps) constructed original ranger station serves as a visitor center with a host of brochures and pamphlets about the North Umpqua highway scenic area.

Our next stop was a narrows with a boat ramp just above Idleld Park. Colorful bobbers lined up midstream from both sides of the bank. We saw some big fish jump, but while we were there, they managed to elude the hooks. We stopped at the newly constructed Tioga Bridge, walking across to see the tiny falls and the river trail on the other side. We then went the short distance to Susan Creek Park. This lovely riverside picnic area was perfect for accommodating our group and many of us crossed the road after lunch to make the 0.8-mile hike to the falls. We found the trail very easy going. It is even designated handicapped accessible.

We followed the *Fly Fish Only* portion of the river past Steamboat Rock to the Steamboat Inn. The views of this stretch of the river must be among the most beautiful in the world. We left Steamboat Inn at about 3:30, retracing our route until intersecting with the North Bank Road to Wilbur, to I-5, and back to Shopko.

Attending were members: Tom Adamcyk, Bill Arthur, Don Baldwin, Barbara Beard, Paul Beard, Paula Beard, Mary Lee Cheadle, Sharon Cutsforth, Barbara Flanders, Dennis Flanders, Marge Hislop, Margit Hollerud, Mary Ann Holser, Kess Hottle, Verna Kocken, Ray Jensen, John McManigal, Lenore McManigal, Liz Reanier, Mary Ellen West, and nonmembers: Pat Bitner, Bernie Claypool, Betty Dickerman, Dawne Dougherty, Jo Floyd, Mary Hawkes, Tom Holser, Barbara Hottle, Michele Tetley.

Ridgeline Celebration and National Trails Day Saturday, June 1, 2013

(Photo by Darko Sojak)

IT STARTED WITH AN 8:00 AM RIDGELINE CAR SHUTTLE HIKE for guests, from Spring Boulevard back to the



Spencer Butte parking lot. By 11:00, the Obsidian table, with displays of historical and trail maintenance photos, was in place with other organizational booths. We had 50 snack bags of raisins to entice people to the display. Matt Bell was on hand with his one-year-old son, Oliver, to lead trail stewardship hikes about volunteer trail maintenance. The weather was perfect for visiting not only with hikers but also with folks staffing the other booths. It was fun! Carrie Karl, Volunteer Coordinator for the Parks and Open Space, and chief organizer of the event, estimated that 150 or more hikers passed by and around 75 actually stopped.

Thanks to Susan Sanazaro for dishing out raisins for the snack bags; John Jacobsen and Elle Weaver for driving the shuttle cars; Janet Jacobsen, Jorry Rolfe, Darko Sojak and Elle Weaver for leading the hike; Darko for putting up the display table and stringing banners around a tree, Pat Sossan and Roberta Chord for hosting; Matt, Janet and Jorry for packing everything away until the Eugene Celebration.

Upcoming Bus Trips

Southern Oregon Coast

Date: Tues. July 16

Leaders: Mary Ellen West, Rick Ahrens

Cost: \$48 (\$50 nonmembers)

Payment: Janet Speelman by July 10

WE WILL LEAVE SHOPKO PARKING LOT AT 8 AM. Beautiful scenery, flowers, marine animals and history are the focus of this Coos Bay area trip. The updated Coos Historical and Maritime Center will introduce us to the history and culture of the region. A leisurely visit to Shore Acres State Park will allow time for lunch (bring your own) and wandering the extensive gardens and shore.

Our final stop will be at Cape Arago State Park. Its offshore island rocks and reef are part of the Oregon National Wildlife Refuge. Expect to see marine mammals. Rick Ahrens will be our naturalist guide.

Ashland Shakespeare Theater & Crater Lake

Date: Sept. 10–11 (Tues-Wed)

Leader: Verna Kocken

Cost: \$190 (\$194 nonmembers) (limit 25 tickets)

Payment: Liz Reanier by Aug 7

WE WILL DEPART SHOPKO AT 8 AM, with a coffee stop at an I-5 rest area, and lunch on your own in historic Jacksonville. We will check into the Best Western Motel in Medford to stow luggage and then board the bus again to Ashland, where we will have dinner on our own. We will attend the free show on the (theater) green, and the performance of *A Midsummer Night's Dream* (\$60 tickets included) in the Elizabethan thea-

ter. We will return to the hotel overnight, with an included continental breakfast, or breakfast on your own at the nearby Black Bear Restaurant. We will load the bus at 9 AM. We return via Crater Lake—with lunch on your own there. We will leave Crater Lake by 2 PM to be back at Shopko by 5–5:30 PM.

End of Summer BBQ

Date: Sept. 24 (Tues)

Leaders: Barbara & Paul Beard

Cost: \$60 (\$62 nonmembers)

Payment: Barbara Payne by Sep. 10

WE WILL LEAVE SHOPKO PARKING LOT AT 8 AM for a trip on the McKenzie River to our destination at Paradise Campground for a full BBQ with all the trimmings: hamburgers, hot dogs, chicken and ribs, with fabulous salads, desserts, chips and dip, and of course, s'mores.

Our trip will take us along McKenzie View Drive to Hayden Bridge, with a stop at Hendrick's Bridge along the way for a view, and on to Leaburg Lake, with a coffee break at the EWEB park. We will make several stops along the river before we arrive at our destination of Paradise Campground and our BBQ lunch. There will be plenty of time to sit around the campfire in your folding chair (provided by you) or for a stroll or hike along the river, while the Beards prepare the BBQ. After lunch, we will travel the 5-mile distance upriver to Belknap Hot Springs for a bit of a walk across the McKenzie, to stroll the beautiful gardens located just above the hot springs. This is a great place to walk off some of the BBQ. Bring your favorite folding chair, a friend, and a big appetite. All costs are included in your fees. Let's have a great time!

Upcoming Activities



Friends of Buford Park & Mt. Pisgah

Indigenous Land Management and Cultural Geography of Mt. Pisgah.

Wednesday, July 17, 6:00 to 8:30 PM

JOIN DAVID HARRELSON, TRIBAL MEMBER AND CULTURAL PROTECTION SPECIALIST for the Confederated Tribes of Grand Ronde, for a presentation on the Kalapuya people and their traditional land management practices. Plants of cultural value being grown at the Native Plant Nursery for restoration will be specifically discussed. In addition, indigenous ways of knowing, known commonly as Traditional Ecological Knowledge, will be shared.

Spirited Meadow Walking with Carolyn Scott Kortge

Sunday, July 21, 9:00 to 11:00 AM

and Thursday, July 25, 5:30 to 7:30 PM

TAKE A MINDFUL WALK WITH CAROLYN SCOTT KORTGE, AUTHOR OF *THE SPIRITED WALKER* AND *HEALING WALKS FOR HARD TIMES*, through Buford Park's South Meadow. Inspired by Henry David Thoreau, Carolyn invites you to 'come to your senses' as you walk. Light refreshments and a chance to talk with Carolyn and connect with the other walkers will follow.

Because space is limited on the tours, registration is required. For more information or to register, go to www.bufordpark.org/tours or call 344-8250.

Help Wanted: Obsidians for Obsidian Trail

EVER HAD AN ITCH TO PERFORM TRAIL MAINTENANCE HIGH UP IN THE CASCADES OVER THE COURSE OF A WEEKEND? After a multi-year hiatus, we'll be leading a trail maintenance activity into the Obsidian area off of McKenzie Pass on the first weekend in August (2nd-4th). We'll have a 6-mile backpack early that Friday morning into the Three Sisters Wilderness across lava fields and beautiful meadows where we'll set up a base camp for our weekend adventure. The rest of the weekend will be spent working on a restoration project given to us by the Forest Service and taking in the stunning views of the Three Sisters.

Tools and on-the-job training will be provided by wilderness rangers. For more information email trails@obsidians.org.

Commemorate our Community at the 31st Annual Eugene Celebration: Volunteers Needed!

The Obsidians are again going to have a booth in the Community Causeway, Saturday, August 24 and Sunday, August 25 from 11 AM-5 PM at the Eugene Celebration. We need your volunteer help working our booth. Please think about scheduling a two-hour shift at 11 AM, 1 PM or 3 PM either Saturday or Sunday. Here is what some members have said who worked the booth: "It was fun. The weather was ideal. Within two hours, Saturday noon to two, I spoke with 22 enthusiastic people of all ages," and, "It was great to see so much interest! The group has a lot of exposure in both the *Eugene Weekly* and the *RG*."

This year, here are some of our ideas to draw attention to our booth...

1. A quiz. We will be placing several photos of mountains and climbers on our display, labeled with this question: Can you name these Oregon peaks?

2. Our old items from our 80+ year history. Old and new photos, and perhaps old and new equipment: a pair of old skis, alpenstock, old snowshoes, old pack—and current climbing equipment like crampons, rope, harness, new pack.

Contact Jorry Rolfe 206-9501 or jorry.rolfe@gmail.com. See you downtown at the celebration!

In Living Color

Nola Nelson

THE *BULLETIN* IS CHOCK-A-BLOCK FULL OF INFORMATION AND PHOTOS. Now that a camera will fit in the palm of your hand, we have a wealth of pictures members have taken and shared with us. But have you only seen them printed out in black and white? Then treat yourself to a visit to our website, Obsidians.org, and look in the left column for *The Obsidian Bulletin* link. There, you can view not only the current issue, but bring up past issues, all in gorgeous, living color.



Now that you have a taste for those brilliant blue skies and blazing wild flowers, check out the new online photo gallery, wa-a-ay over to the left side of the screen. Click on the *Gallery* link, and you can browse hundreds of pictures. Check out the postings of trips, complete with links to the official trip reports. Then have fun looking at pictures of past adventures—we

even have Sue Sullivan's account of the trek to Nepal undertaken by her and John Mowat in 2006.

Suggestion: If you are not comfortable fishing around on web sites and online photo albums, or if your internet access is a two-inch square phone screen, consider getting together for coffee and brownies with someone who has a nice big desktop screen.

Thanks to everyone who has contributed to living, growing history—in color!

For Sale

YAKIMA CARTOP HARDWARE FOR ONE WATERCRAFT:

pair of *HullyRollers*, pair of *Mako Saddles*, 4 universal *Mighty Mount* adapters for your crossbars, plus tie downs. Worked great on the Subaru: \$100. Contact Nola at 942-5326 or nolag-nelson@yahoo.com



Obsidian Calendar

July

10 Wed	Mt. Pisgah Trail Run M Beardsley	357-0630
13 Sat	Middle Pyramid Hike M Adkins	344-4163
13 Sat	Glacier Peak Climb Deeter	954-0924
16 Tue	The South Coast Bus West	343-5492
17 Wed	Mt. Pisgah Trail Run M Beardsley	357-0630
20 Sat	Olallie Mountain Hike M Terry	345-0720
20 Sat	Tidbits Mountain Hike M Whitfield	937-2364
21 Sun	Horsepasture Mt. Hike D Stockdale	767-3688
21 Sun	The Twins Hike M Gisein	554-4162
22 Mon	Mt. Pisgah Sunset Hike Musselwhite	461-3296
24 Wed	Mt. Pisgah Trail Run M Beardsley	357-0630
24 Wed	Substitute Point Hike M Johnson	520-2470
27 Sat	Mt. Adams - Mazama Glacier Climb Sullivan	342-6546
27 Sat	Duffy Lake Hike M Strahon	689-0753
27 Jul	North Sister Climb Deeter	954-0924
27 Sat	Canyon Creek Meadows Hike M Funkhouser	206-2303
28 Sun	French Pete Creek Hike D Colgan	485-2787
31 Wed	Mt. Pisgah Trail Run M Beardsley	357-0630
31 Wed	Spencer Butte Trail Maintenance M Bell	503-884-8829

August

2 Fri	Orchard Point Bike E Esch	338-8280
2 Fri	Pine Lakes-Wallowa Mtns Bk Pk D Sullivan	683-6837
2 Fri	Obsidian Limited Access Trail Mnt Larsen	509-949-0034
3 Sat	Three Fingered Jack Climb Harris	729-3460
4 Sun	Lowder Mountain Hike M Terry	345-0720
4 Sun	PCT Big Lake to Hwy 242 Hike Blumm	343-8830
5 Mon	NE OR, SW WA Bus Cutsforth	746-4929
5 Mon	Mt. Jefferson Climb D Hamilton	343-6550
9 Fri	So. Matthieu Lake Bk Pk E Lipton	736-7498
10 Sat	Carl Lake Hike M Funkhouser	206-2303
17 Sat	Row River Bike M Strahon	689-0753
17 Sat	Three Fingered Jack Climb Deeter	954-0924
18 Sun	Black Crater Hike D Wolling	345-2110
18 Sun	Mt. Washington Climb Deeter	954-0924
19 Mon	Leavenworth Ext Trp Christensen	343-8941
20 Tue	Mt. Pisgah - Full Moon/Sunset Jacobsen	343-8030
25 Sun	Black Crater Hike M Baer	431-0767
28 Wed	Spencer Butte Trail Maintenance.. Bell	503-884-8829
29 Thu	Red Butte Hike D Smythe	757-6357
31 Sat	Marie Lake Hike M Duncan	343-8079

September

1 Sun	Arrowhead Lake Loop Hike D Harrison	556-3654
5 Thu	Women's Waldo Lake Canoe E Esch	338-8280
5 Thu	Mirror Lake/Eagle Cap Bk Pk D Stockdale	767-3668
7 Sat	Four-In-One Cone Hike M Tucker	344-8371
8 Sun	Fuji Mountain Loop Hike D Wilken	343-3080
8 Sun	South Sister Climb Blumm	343-8830
10 Tue	Shakespeare & Crater Lake Bus Kocken	736-5180
11 Wed	Matthieu Lakes Hike M Duncan	343-8079
14 Sat	Mt. Hubris Climb Reiter	521-8472
17 Tue	TBA	ExploraTalk
19 Thu	Mt. Pisgah Moon/Sunset Hike M Jacobsen	343-8030
21 Sat	Coyote Creek Canoe E Musselwhite	461-3296
21 Sat	Broken Top Climb Harris	521-5807
22 Sat	The Twins Hike M Duncan	343-8079
22 Sat	Green Lakes Hike M James	683-7488
24 Mon	Barbecue Bus Beard	994-2337
27 Fri	Divide Lake Hike M Colgan	485-2787
28 Sep	Spencer Butte Trail Maintenance Bell	503-884-8829



Sunset rainbow from Mt. Pisgah—photo by Cindy Rust

July/August 2013



RETURN SERVICE REQUESTED

OBSDIANS, INC.
P.O. BOX 51510
EUGENE, OR 97405



OBSDIANS, INC. IS A NON-PROFIT ORGANIZA-

PRESORTED STANDARD
US POSTAGE
PAID
EUGENE, OR
PERMIT 803