



Inside This Issue

Ten Peak Leader	1
Tips for Trips	2
Where is Myron Cook?	2
Yosemite	3
Trip Reports	4-13
Potluck	14
ExploraTalk	14
Upcoming	15
SOLV Beach Clean-up	15
Lifestream of the Nation	15
Calendar	15
Picture of the Month	16

Dates to Remember

October 15	ExploraTalk
October 25	Potluck
November 2	Bulletin deadline
November 6	Board Meeting

Complete current schedules at:
www.observians.org or
Register-Guard – Outdoors – Tuesday

Dues Renewal!

Thanks to so many of you who have already sent in your renewal dues!

Please remember to update any contact information so that it will be included in the upcoming directory.

Brian Hamilton Receives Ten Peak Leader Award

Janet Jacobsen

BRIAN HAMILTON WAS PRESENTED WITH THE TEN PEAK LEADER AWARD at the October 11th Annual Meeting. It is the hardest and most challenging award to earn in our club. Leading a group of climbers safely to the top takes a multitude of skills and grit. Brian is currently the chair of the Climbs Committee and was president of the Obsidians in 2008.

We caught up with Brian to ask him a few questions about his achievement.

What was the hardest part of leading the climbs of the ten major peaks?

My first leads were easy. I started with walk-ups like Diamond Peak and South Sister. Progressing to roped climbs was more difficult. First I climbed each of the peaks with an experienced leader so that I could be familiar with the route. Then it was a matter of finding the time to lead the trips and having decent weather for the climb. One of the hardest parts was getting the weather to cooperate. Another hard part was that I was getting older each year and the most difficult climbs came last. I led #10, Mt. Hood, this year at age 62.

What kind of training did you need?

Training involved taking the Obsidians/EMR climb school, learning to read maps and compass, and practice. Joining Eugene Mountain Rescue and participating in that group's training and practices also helped. I led Diamond Peak as my first climb in 2005.

Were there any mishaps?

Mishaps include being forced off a mountain by a thunderstorm, having a basketball-size rock hit a fellow climber, and having to turn around because one of our group developed hypothermia.

What mountain caused the most problems?

Mt. Hood was the most difficult to climb with regards to weather. Ideally, I would live closer to the mountain so we could leave for a climb at a moment's notice. The reality is that I work fulltime and have to plan for upcoming weekends. It doesn't help me if there is a clear weather-window day in the middle of the week and I have to wait until the weekend.

Would you do it again?

If I could do it all over again, I would, but I would start when I was much younger instead of waiting until I was 51 to begin climbing.

The reward?

I love to climb mountains for the sense of accomplishment, the unique effect high altitude has on the senses, the views, and being outdoors. Leading climbs means that I get to introduce others to those same rewards and I get to pick which mountains to climb and do it on my schedule.

Congratulations, Brian! Thanks for keeping everyone safe on those climbs!

Editor's note: Other members who have received this award are Wayne Deeter 2008, Doug Nelson 2003, John Pegg 1998. Deceased: Dick Moffitt 1980, Lee Hatch 1979, Frank Moore 1978. Inactive: Ken Ball 1992, Bud Proctor 1988.

Tips for Late Summer Trips

Summer Trips Chair Tom Musselwhite

FALL BRINGS WITH IT NEW VISTAS IN THE OUTBACK. Leaves falling from trees open scenes unseen during months of full foliage. The season poses additional challenges too. Cold wet weather is an invitation for hypothermia! Consider these tips during late season trips, and always be prepared.

1. Someone in the group should carry a waterproof (closed cell) foam sleeping pad for insulation from the heat sink effects of cold ground. If someone severely twists an ankle, or worse, the injury is not as likely to gravely threaten their health as is the cold.

2. Carry a good space blanket, and extra rations.

3. Carry cord or lightweight cam-buckle straps for lashing poles if needed.

Leaders, there is still time to schedule another summer trip. Send your trip request to summertrips@obsidians.org.

Obsidians Summer Trips season ends as the Winter Trips season begins, on November 15. Anne Bonine will be continuing as Winter Trips Chair.

Where is Myron?

Darko Sojak

I VISITED MYRON COOK, OUR FELLOW OBSIDIAN, on August 22, 2013 after finding his address from Janet Jacobsen. Myron has lived the last couple of years at a foster home in Springfield. His home that he calls a miniature paradise is shared with three women residents, his son Ben, and a very nice lady-homeowner and caregiver. Myron was happy to see pictures from recent hikes that I brought to him on my laptop. We happily spent an hour sharing stories. Myron enjoys Wednesday's chess parties and meditations. Almost daily, he takes 45-minute walks in his huge backyard to keep him in good shape. I promised to keep an eye on the schedule since he would like to attend some easy hikes.

We will keep in touch my friend!



THE OBSIDIANS FACEBOOK PAGE www.facebook.com/

OBSIDIANS, INC

P.O. Box 51510, Eugene, OR 97405

Website: www.obsidians.org

Board of Directors

Elle Weaver, President

Matt Bell, Vice President

Susan Wanser, Secretary

Stewart Hoeg, Treasurer

Sharon Cutsforth, Pat Esch, John Jacobsen,
Tom Musselwhite, & Nancy Whitfield

*Board meetings are held at 6 PM the first
Wednesday of each month, except October
when it is the Wednesday after the Annual
Meeting, and no meeting in August.*

Committee Chairpersons

Byways By BusLiz Reanier
Climbs.....Brian Hamilton
Concessions.....Patty McAfee
Conservation/SciEdJoella Ewing
EntertainmentSusan Wanser
Extended Trips.....Chris Stockdale
Finance.....Stewart Hoeg
Librarian/Historian.....Lenore McManigal
Lodge Building.....Doug Nelson
Lodge GroundsJohn Jacobsen
Membership.....Elle Weaver
OnlineWayne Deeter
PublicationsLou Maenz
PublicityJorry Rolfe
SafetyPat Esch
Summer CampLana Lindstrom
Summer TripsTom Musselwhite
Trail MaintenanceMatt Bell
Winter TripsAnne Bonine

THE OBSIDIAN Bulletin

© 2013

Published monthly, except August and December. Articles, story ideas, letters to the editor and other editorial submissions should be emailed to:

bulletin@obsidians.org

For reprint rights, contact:

The Obsidian Bulletin

P.O. Box 51510, Eugene, OR 97405

Deadline

for November/December Bulletin

Saturday, November 2, 2013

Assembly/Mailing Team

For September Bulletin

Assembly & Mail Manager - Lou Maenz

Assembly Team - Tom Adamczyk, Sharon

Cutsforth, Yuan Hopkins, Vi Johnson,

John & Lenore McManigal and

Margaret Prentice

Editorial Team

Writing & Editorial Staff - Bea Fontana,

Joanne Ledet, Lou Maenz and Ethel

Weltman

Copy Editors - Ethel Weltman, Jan Jacobson

Graphics Design & Desktop Publishing -
Stewart Hoeg

A Yosemite Experience to Remember

Lyndell Wilken

FOUR OBSIDIANS, JAN AND RICH ANSELMO, JOHN HEGG AND LYNDELL WILKEN, were looking forward to completing their last leg of the 220-mile John Muir Trail that they had been working on three previous hiking seasons. Their final piece of the trail was going to be between Mammoth Lakes and Yosemite Valley. The logistics for this backpack appeared to be easier than previous trips because we could park our car at Mammoth Lakes and begin our hike at Devils Postpile, hike the 54 miles to Yosemite Valley and catch the YARTS (Yosemite Area Regional Transportation System) bus back to our car without having to do the shuttle around the Sierras ourselves.

The first we heard of the Yosemite Rim Fire was the morning of our departure as we prepared our gear in the motel at Mammoth. We saw where the fire was located on the map and figured if the trails were going to close someone would let us know, so off we went. Luckily we had eight great days of backpacking and day hiking with clear, smoke-free skies and perfect High Sierra weather. We could not have wished for more except we could have done without the bear that was interested in Rich's pack at 6 AM on the morning of the last day. We did see a large bank of smoke on occasion off in the distance and John watched the fire from Tuolumne Meadows at dark and he described it as an amazing array of colors. Still there were no restrictions for the remaining 20 miles of trail to Yosemite Valley.

er bus came by and I asked them if the 5 PM bus would be on time. The driver just looked at me and said, "I knew people would get trapped in Yosemite." Well, I knew right away we were going to be up a creek without a paddle. It turned out the fire fighters had started a backburn along the Tioga Pass road and had closed the road at noon that day. Our options seemed to be dismal. We had one night we could stay in the Yosemite backpacker campground using our backcountry permit, but the road was going to be closed indefinitely.

After much back and forth discussion with bus drivers, ourselves and bystanders, we decided to purchase a \$4 ticket to Mariposa outside the park, where we found a motel. It was a late night trying to figure out what we needed to do to get back to Mammoth on the opposite side of the mountain range. There were no rental car places in the small towns that would let us drive one way so we took advantage of our senior status and tested California's mass transit systems. This is how we got back. We caught a 6:40 AM bus the next morning to Merced for another \$4. The bus stopped at Amtrak where we took the train for \$15 to Sacramento, then a city bus for a \$1 to the airport to pick up a rental car for \$29 a day to drive the 256 miles to Mammoth. Amazingly we never waited for more than 20 minutes at any stop and we arrived in Mammoth just before dark. We drove the car back to Sacramento the next day arriving in time to get the one-day rental rate. Despite the interruption of our original plan we all had a great time experiencing the many modes



After reaching Yosemite Valley we found a shower at the Curry Village tent cabins, had a good lunch and took the bus to the YARTS bus stop at the visitor center. Little did we know another adventure was about to unfold. Our bus back to Mammoth was scheduled to leave at 5 PM. An earli-

of transport and were encouraged to see a transit system that worked in our favor. For any of you wanting to do this backpack we highly recommend it, and if you should get stuck in Yosemite Valley now you know how to get back.

Trip Reports & Other Activities



Trail Running

Ridgeline Trail

June 5, 2013

Leader: Dave Beardsley

Trail Run: 3 miles, 500 ft. (Moderate)

WE STARTED OUR RUN FROM THE FOX HOLLOW TRAILHEAD UNDER SUNNY SKIES. We started down Martin Street, then across to Powerline Trail. Up to Dillard Road and return via the Ridgeline Trail back to Fox Hollow. Nice varied loop with all types of surfaces imaginable. Members: Dave Beardsley, Diana Masarie. Nonmembers: Sheila Guildler, Calvin Beardsley.

Mt. Pisgah

June 12, 2013

Leader: Dave Beardsley

Trail Run: 3 miles, 500 ft. (Moderate)

WE STARTED FROM THE MT PISGAH MAIN PARKING LOT and ran north on the closed gravel road to the bridge, then up to the north trail head. We ran up Trail #3 around the north butte and turned east on Trail #4. We then turned onto the new Trail #34, to #3 and to the bench, then across to the small cairn and down Trail #35 to the Arboretum. It was a cool day- perfect for a trail run. Members: Dave Beardsley. Nonmembers: Calvin Beardsley, Gavin Bronaugh.



Hikes

Dog Mountain

June 1, 2013

Leader: Becky Lipton

Hike: 6 miles, 3,000 ft. (Difficult)

THE PARKING LOT WAS PACKED when we arrived at the trailhead to participate in one of the largest and greatest wildflower treks in the Northwest. We met folks all the way from Seattle to eastern and southern Oregon, all eager to conquer the mountain and see for themselves the acres of flowers, featuring sunflower-like balsamroot. Nine happy hikers reached the summit and enjoyed the warm sun and the view, along with many dozens of other folks. No one wanted to leave, but alas,

we admitted that we must return to Eugene and the real world. Members: Lisa Grissell, Jennifer Haynes, Holger Krentz, Becky Lipton, Kate Parrish, Sarah Praskievicz. Nonmembers: Juliana Cichy, Malissa Bare, Tom Giesen.

Chi Gong & Meditation Hike

June 8, 2013

Leader & Photographer: Becky Lipton

Hike: 6.7 miles, 1,400 ft. (Easy)

FOURTEEN HIKERS INTERESTED IN A SPECIAL ADVENTURE joined the Obsidian Chi Gong & meditation hike. This hike was along the gorgeous and energizing Brice Creek east of Cottage Grove and included hiking up to and behind Trestle Creek Falls. This unique experience involved learning and practicing various walking and standing meditation and Chi Gong (energizing) techniques to bring greater consciousness and awareness to one's personal relaxation and inner rejuvenation process, while hiking and enjoying nature. All participants were willing to hike in silence for periods of time to practice their meditation and Chi Gong lessons. The group participated in several group sharings and further lessons at several points along the route. Chi Gong techniques were taught by Don Cross, Chi Gong and martial arts instructor for over 40 years.



Meditation was taught by Becky Lipton, who has studied meditation and healing arts for over 25 years. Members: Jennifer Baer, Rob Castleberry, Don Cross, May Fogg, Anne Hollander, Becky Lipton, Nola Nelson, Chris Shuraleff. Nonmembers: Katie Geiser, Mona Bronson, Rebecca Coulterpark, Melda DeSalvo, Jeremy Jones, Brian Brush.

McKenzie River Trail

June 8, 2013

Leader: David Morris

Hike: 8 miles, 700 ft. (Moderate)

SIX OF US HIT THE TRAIL AROUND 10 IN THE MORNING. Right from the start it was a warm sunny day. All of the hikers were strong hikers and quickly made it to Blue Pool. After a

short break everyone was ready to continue. We quickly were away from the river hiking through the old growth cedars. It was suggested that my trip description might be a little more accurate if I said big old trees instead of old growth forest— isn't that pretty much the same thing? By the time we got to Carmen Reservoir we were ready for a good rest. It was about 80 out and real nice. When we got near Koosah falls we were hit by a blast of cold air, kind of like from an air conditioner. After a short break we continued on to Sahalie falls and found several kayakers portaging around the falls. When we learned that they were going to kayak over Koosah falls, we made a U turn and watched three kayakers plunge over the falls. It made an exciting end to the hike. Members: Verlean McCoy, David Morris, Sarah Praskievicz, Gary Spizizen, Bill Watson. Non-members: Jean Stover.

Amazon Headwaters/Spencer Butte

August 14, 2013

Leader: Janet Jacobsen

Hike: 6 miles, 1,300 ft. (Moderate)

RICK SANFORD, ON HIS 3RD QUALIFYING HIKE, led the way to the top in record time. He even had time to spot a large owl perched high up in a tree. The hardest part was picking up litter thrown in poison oak bushes and stinging nettles. Members: May Fogg, Janet Jacobsen, Ed Lichtenstein. Nonmembers: Rick Sanford.

Mt. Pisgah - Full Moon/Sunset

August 20, 2013

Leader: Janet Jacobsen

Hike: 3 miles, 1,000 ft. (Moderate)

NOT ONLY DID WE VIEW THE FULL MOON appearing shortly before 8:00 and the sunset at 8:08, but we were fortunate to hear Peter Helzer share the story of how he created the Sighting Pedestal. Leading a tour for Friends of Buford Park, Peter was able to include all of the hikers who were watching the celestial events. Peter described a winter solstice sunrise hike just after a snowfall, the first time he saw the sun bursting through the slot. Perhaps we can recruit a leader for a December solstice hike! Members: Rick Ahrens, Brad Bennett, Marianne Camp, Carl Hassman, Richard Hughes, Janet Jacobsen, Ed Lichtenstein, Lana Lindstrom, Judy Ness. Nonmembers: Dana Furgerson, Barbie Zinn, Jimmy Murphy.

Amazon Headwaters/Spencer Butte

August 22, 2013

Leader: Janet Jacobsen

Hike: 6 miles, 1,300 ft. (Moderate)

A FEW RAIN DROPS AT THE BEGINNING OF THE HIKE did not keep three of us from hiking in muggy weather. Members: Janet Jacobsen, Lana Lindstrom, Gary Spizizen.

Lookout Creek, H. J. Andrews Forest

August 24, 2013

Leader: Tom Giesen

Photographer: Holger Krentz

Hike: 7.6 miles, 1,850 ft. (Moderate)

WE HAD EXCELLENT WEATHER—sunny, cool at first, then comfortable. I measured climbing with my wrist altimeter at 1,850 feet versus the 1,200 feet I projected. As I explained to the hikers “I was ONLY 54% off!” This was an experimental silent hike—we were to talk only at breaks and lunch. We prac-



ticed silence in that manner for half the hike—but there was some furtive whispering going on. The hikers said they liked the silence, but agreed that whispering was OK. It seems it was a different experience with silence—it was easier to focus on the experience of being in the forest. I liked it much better—I often get annoyed by loud conversations that have nothing to do with the hike environment. I will schedule another silent hike in the next few months. The old-growth forest is really magnificent—to be in it for 3.8 miles (one way) was wonderful. At a break, we sat munching snacks and someone (Lisa, I think, or Nancy) noticed a shiny metal object down in the roots of a hemlock. I fished it out and found it was a square soft metal tag of a kind often used in the woods, nailed to trees. This one said (scratched into the metal) “End of trail layout. June 8th, 1977. Franklin and Lewis. 3,400 feet” I think that was a tag placed by the eminent forest ecologist Dr. Jerry Franklin, who was, at the time, at OSU, and working in the H. J. Andrews forest on OG research. I took the tag home and mailed it to Jerry, who is a friend, with an explanation re: finding it. Members: Tom Giesen, Lisa Grissell, Holger Krentz, Nancy Matthews. Nonmembers: Shinju Flynn.

Black Crater

August 25, 2013

Leader: Jennifer Baer

Hike: 8 miles, 2,500 ft. (Difficult)

NO NEED FOR SUNSCREEN ON THIS DAY! There was a steady rain on our way to the trailhead, but as we dropped down on the east side of 242 the rain stopped. Occasionally the clouds parted and we got some views. The rumbles of thunder were distant initially, but as we neared the summit were nearly upon us; most of the group turned around or stopped. Andy reported whiteout conditions and sleet at the summit. After heading down, the weather quickly cleared and we took advantage of some brief sunshine to enjoy lunch. Back at the trailhead, very few cars remained. Some of us stopped at Dee Wright on the way home to enjoy the blustery conditions, and the full brunt of the storm arrived minutes later with soaking rain and more lightning and thunder. Thanks to the group for being flexible with our hiking plans on this unusual summer day. Members:

Jennifer Baer, Marianne Camp, Dick Hildreth, Daphne James, Andrew McIvor, Brian Popowsky.

Amazon Headwaters/Spencer Butte

August 28, 2013

Leader: Janet Jacobsen

Hike: 6 miles, 1,300 ft. (Moderate)

GARY SPIZIZEN STOPPED BY BEFORE THE HIKE to share his fig ricotta cheese pancakes. This was in response to our begging for a taste when he mentioned them on our last hike. Tommy Young stopped by to cancel and also enjoyed the pancakes. We were sorry that May Fogg couldn't join the Pancake Feast for her last hike before she heads for Spain and the El Camino. We welcomed Judy Sinnott on her first hike with the club. Members: Janet Jacobsen. Nonmembers: Rick Sanford, Judy Sinnott.

Red Butte

August 29, 2013

Leader: Robert Smythe

Hike: 11.8 miles, 1,800 ft. (Difficult)

THE WEATHER FORECAST WAS NOT ENCOURAGING (chance of rain near 100%), but five of us gathered anyway for the walk up to Mowitch Lake. To our surprise and delight, the weather was remarkably good, and we made the short climb from Mowitch Lake to the summit of Red Butte and enjoyed excellent views. The rain caught up with us on the last half hour of the descent, but at that point no one much cared, and by 4 PM we were back at the cars. Members: Brad Bennett, Robert Smythe, Chris Stockdale. Nonmembers: David Hawkins, Janel Erickson.

Marie Lake

August 31, 2013

Leader & Photographer: Jim Duncan

Hike: 5.8 miles, 1,060 ft. (Moderate)

MARIE AND ROCKPILE LAKES ARE REMOTE but beautiful little lakes near Diamond Peak. Our group of 11 got an early start and arrived at the trailhead in about two hours. The hike is uphill for the first mile or more, then levels off around Diamond Rockpile. At the summit of the hike we had beautiful vistas to the south where we could see Summit Lake, about three miles away, along with Cowhorn Mountain, Sawtooth Mountain, and in the distance, Mt. Thielsen. We descended to visit Rockpile



Lake, then continued to Marie Lake where we stopped for lunch. The day was warm and the breezes blowing off the lake were refreshing. Dave was the only participant to take the waters at Marie Lake, and found them to his liking. After a leisurely lunch, we returned by the same route to our cars. On the way home, we stopped briefly at Indigo Springs. It was a good day to be in the mountains with a very congenial group. Members: Jim Duncan, Sharon Duncan, Holger Krentz, Ed Lichtenstein, Nancy Matthews, Verlean McCoy, Dave Predeek, Lamonte Smith, Nancy Whitfield. Nonmembers: Jean Stover, Michelle Formatin.

Hendricks Park to Whilamut Loop

September 1, 2013

Leader: Janet Jacobsen

Photographer: Holger Krentz

Hike: 4.5 miles, 350 ft. (Easy)

OUR HIKE INCLUDED THE RHODODENDRON GARDEN, Pre's Rock and views of the sculpture (*The River*) on the Whilamut Passage Bridge through the fence on Birch Lane and from the Knickerbocker Bridge. Whilamut means where the river ripples



and runs fast. The story of Willie Knickerbocker and how the bridge was named was coincidentally in the *Register Guard* that morning. Thanks to Holger Krentz, we found the commemorative plaque for Willie in some brush near the north end of the bridge. As we walked east on the trails, we took note of two new Kalapuya Talking Stones (Gudu-Kut and Duucu-Ba) and the planned spaces for sculpture and tiles near the Canoe Bridge. Our 2-1/2 hour hike was an enjoyable amble through a variety of landscapes. Members: Daniele Delaby, Yuan Hopkins, Janet Jacobsen, Holger Krentz, Ruth Romoser, Susan Sanazaro, Barbara Schomaker, Michelle Tambellini. Nonmembers: Barbara Sutherland, Roy Whang.

Amazon Headwaters/Spencer Butte

September 4, 2013

Leader: Janet Jacobsen

Hike: 6 miles, 1,300 ft. (Moderate)

OUR GROUP OF HIKERS had experiences to share about the Peace Corps, International Schools, and volunteer work in Africa. Members: Janet Jacobsen, Susan Sanazaro, Nancy White,

Kris Wolters, Tommy Young. Nonmembers: Craig Molitor, Shaundele Leatherberry, Judy Sinnott, Nancy Roberts.

Four-In-One Cone

September 7, 2013

Leader: Clare Tucker

Hike: 8.6 miles, 1,500 ft. (Moderate)

PERFECT DAY AND A PERFECT GROUP—nine of us: Brian Popowsky, Holger Krentz, Dick Hildreth, Nola Nelson, David Hawkins, Susan Sanazarto, Brenda Kameenui, Clare Tucker, and Chris Shaffner, who completed her third trip to qualify for new membership! The beginning of mushroom season was evident on the recently dampened forest floor, and a couple of large boletus were brought back to Eugene. Our lunch was enjoyed on the top of the cinder cone with the large ants seemingly everywhere, and a beautiful clear view of the Cascade summits. Members: Dick Hildreth, Brenda Kameenui, Holger Krentz, Nola Nelson, Brian Popowsky, Susan Sanazarto, Clare Tucker. Nonmembers: Chris Shaffner, David Hawkins.

Fuji Mountain-Upper Island Loop

September 8, 2013

Leader: Lyndell Wilken

Hike: 16 miles, 2,556 ft. (Difficult)

TWO OBSIDIANS ENJOYED CLEAR SKIES AND GREAT WEATHER CONDITIONS on the ascent of Fuji Mountain. Ripe huckleberries on the way to the top gave us a reason to stop, rest and enjoy. We were not alone on the trail as mountain bikes and a handful of hikers had already been to the top when we arrived at noon for lunch. With the recent rain we could see all the way to Mt. Hood. The temperature was warm, but pleasant for most of the trip. Waldo Lake was a beautiful blue against the blue sky. On the descent we decided not to continue to the Upper Island Loop, which would have been an additional 4 miles, so we settled for 12 miles on the day. Members: Sheila Guildler, Lyndell Wilken.

Ribbon Trail

September 8, 2013

Leader: Jorry Rolfe

Hike: 2.5 miles, 300 ft. (Easy)

THE PLEASANT HIKE ON THIS CITY TRAIL was a great way to acquaint two nonmembers with the club and the lodge. The history of the Ribbon Trail was explained before we set off for Hendricks Park at a moderate pace. Easy conversation and plans shared for future hikes highlighted the morning's activity. Members: Jorry Rolfe, Randall Sinnott. Nonmembers: Judy Sinnott, Judy Garwood.

Matthieu Lakes

September 11, 2013

Leader: Sharon Duncan

Photographer: Jim Duncan

Hike: 6 miles, 800 ft. (Moderate)

IT WAS A WARM DAY IN EUGENE, but a beautiful day in the mountains. Our group of nine left Eugene and met Greg at the trailhead just past Dee Wright Observatory. We took the upper



loop trail, stopping to look at several fly aminitas and other mushrooms along the way. At higher points along the trail, we looked back for great views of Belknap Crater, Mt. Washington, Three Fingered Jack, Mt. Jefferson, and in the distance, Mt. Hood. We enjoyed a leisurely lunch at South Matthieu Lake facing North and Middle Sister. The two Barbaras, Marlene, Mary, and Greg braved the cool water for a refreshing swim. After lunch we continued on the loop trail, stopping briefly at North Matthieu Lake, then continued on past the long ridge of lava, and back to the trailhead. The lakes and vistas were beautiful, the day was perfect, and everyone seemed to enjoy this outing. Members: Barbara Aten, Marlene Drescher, Jim Duncan, Sharon Duncan, Yuan Hopkins, Mary Livingston, Nancy Whitfield, Tommy Young. Nonmembers: Barbara Dumesnil, Greg Vaughn.

Amazon Headwaters/Spencer Butte

September 11, 2013

Leader: Janet Jacobsen

Hike: 6 miles, 1,300 ft. (Moderate)

RICK SANFORD MADE A RECORD BREAKING TRIP to the top in one hour. Craig Molitor and I followed 30 minutes later. Members: Janet Jacobsen, Rick Sanford. Nonmembers: Craig Molitor.

Amazon Headwaters/Spencer Butte

September 18, 2013

Leader: Janet Jacobsen

Hike: 6 miles, 1,300 ft. (Moderate)

SIX OF US WITH ONE CARRYING A 30 POUND PACK made it to the top in an hour and a half. The recent rain dampened the dusty trail and gave freshness to the vegetation. It was Craig Molitor's third trip and we signed his application. Members: Janet Jacobsen, Jorry Rolfe, Tommy Young. Nonmembers: Barbie Zinn, Craig Molitor, B. Johnson.

Mt. Pisgah - Full Moon/Sunset

September 19, 2013

Leader: Janet Jacobsen

Hike: 3 miles, 1,000 ft. (Moderate)

THE HIGHLIGHT OF THE EVENING was the first glimpse of red of the Harvest Moon, the closest moon to the autumnal equinox. It quickly rose becoming a huge pumpkin as we snapped photos and enjoyed the warm evening. One person remarked, "I can see why people want to do this hike every year." Members: Marianne Camp, Jim Duncan, Sharon Duncan, Janet Jacobsen, John Jacobsen, Branden Johnson, Jorry Rolfe. Nonmembers: Hazel Jones, Alex Fiori, Dan Udovic, Wolf Aulenbacher, Roy Whang, Judy Garwood.

Erma Bell Lakes September 21, 2013

**Leader: Joella Ewing, Assistant: Tom Musselwhite
Hike: 5.6 miles, 500 ft. (Easy)**

WE GATHERED AND TRAVELED FROM SEHS during a fairly heavy rain. We were so glad we didn't cancel because we arrived at the trailhead under partly sunny skies, which followed us most of the day. We were sprinkled on lightly only a few times. A birding organization asked us to count birds since they didn't have anyone counting at the Erma Bell Lakes elevation of 4,500 feet. Nancy Matthews, the only birder among us, filled in the count sheet we'd been given with a total of 41 birds of 12 different varieties. In addition to birds, we saw salamanders, otters at play (when are they not?) and a pika. Two first timers with us are anxious to complete their membership requirements and one nonmember completed her requirements and will join at the annual meeting. All nine of us enjoyed the day that ended with food and drink at the Union Local 180 in Oakridge. Members: Roberta Chord, Joella Ewing, Holger Krentz, Nancy Matthews, Tom Musselwhite. Nonmembers: Lynne Eichner-Kelley, Fumiyo Tao, Judy Sinnott, Sara Bergsund.



Climbs

Mt. Hood June 9, 2013

**Leader: Danneille Harris
Climb: 7.2 miles, 5,200 ft. (Difficult)**

FOUR CLIMBERS PILED IN FOR THE CARPOOL from Springfield to Timberline with a stop at DQ in Sandy for the mandatory pre-climb calorie load. After a few hours of sleep we started up the mountain about midnight. Many other groups were also out braving the mountain. The forecast had called for possible heavy wind and unfortunately that held true. After struggling to the top of the Palmer lift, two climbers opted to head back down. As summiting seemed unlikely the remaining two climbers sent the rope and pickets back down the mountain with the rest of the team and decided to continue on up to the Hogsback for the sake of a good workout. The wind was so fierce at times we were often in danger of being blown over but they diminished somewhat in the Crater Rock area. We briefly enjoyed the sunrise and some chocolate chip cookies before heading back down arriving back at Timberline around 7:30 AM. We were a little disappointed in not making

the summit but overall it was a good experience and a fun team. Members: Dave Beardsley, Danneille Harris, Rick Harris. Nonmembers: Bruce Tufts.

Three Fingered Jack August 16, 2013

**Leader: Danneille Harris, Assistant: Rick Harris
Climb: 11 miles, 3,000 ft. (Difficult)**

A 4:30 AM START HAD OUR GROUP OF SIX AT THE CRAWL BY 8:30. Cool morning temps and a light breeze had most donning jackets while the fixed line across the crawl was being set. Smoke from Douglas and Camp Sherman fires occasionally obscured the views but most smoke drifted away by afternoon. Climbers listened to gypsy music (courtesy of the Bulgarian contingent of our climbing team) while waiting their turn to climb the chimney and get belayed out to the true summit. After a quick snack all were headed back down by 1:30. Most everything went fairly smoothly for this my first lead of Three Fingered Jack. Special thanks to my assistant, Rick Harris, for belaying, recent route beta, advice, and support. Members: Ted Glick, Danneille Harris, Rick Harris, Ivan Paskalev. Nonmembers: Boyan Dobrev, Svetoslav Dobrev.



Backpacks

South Matthieu Lake August 9, 2013

**Leader: Becky Lipton
Backpack: 3 miles, 800 ft. (Easy)**

FIVE EAGER BACKPACKERS took to the trail in spite of forecasts for possible afternoon showers for the weekend. After having gone through the hottest and driest summer in decades, it was difficult to imagine that we would encounter much moisture. They say that the high peaks create their own weather patterns and indeed, the clouds did gather around the Three Sisters and did provide an impressive booming and echoing of thunder with a shower on Friday afternoon as we arrived at South Matthieu Lake. We took refuge on the dry side of some trees and made friends with numerous other hikers and backpackers, who were doing the same. On Saturday, the group hiked to Opie Dildock pass and to the overlook onto Collier Glacier at the North Sister. The return hike from the North Sister was quite drenching and this time there were no dry spots to socialize in upon our return to camp. Most folks headed for their tents to wait out the rain. Some of us hung out in the rain by the PCT, trading stories with dripping through hikers—those hardy souls walking from Mexico to Canada. I don't know about the others, but I certainly felt quite wimpish as these cheery through hikers were coming by with their minimalist 12 pound backpacks, with hardly any clothes on and appearing to be drenched through and through. Brrrrrr!!!!!! It helps to be young and have a good circulatory system! The next day we packed up all our soaked clothing and tents and headed out, enjoying a day hike at lower elevations, well away from the showers occurring up near the

peaks again. Members: Mari Baldwin, Keiko Bryan, Becky Lipton, Sam Tracer. Nonmembers: Joan Skarda.

Mirror Lake/Eagle Cap

September 4, 2013

Leader & Photographer: Chris Stockdale

Backpack: 17.3 miles, 4,000 ft. (Difficult)

THE TRIP STARTED OFF WITH A BANG—or actually, numerous bangs—as we were pummeled by a raging thunderstorm. Fortunately, the group had already erected its tents at the Two Pan Trailhead up the Lostine Valley. We woke the following morning to rain, but the group remained cheerful as it packed up soggy gear and started off on the East Fork Lostine River Trail. Within a fairly short time, the rain ceased as we entered a spectacular long meadow with views of Eagle Cap at the far end. Upon arrival at Mirror Lake, we started our search for the ‘perfect’ camp spot, but then had to hurry our decision as black clouds loomed and rumbles of thunder echoed around the lake. Sure enough, another storm passed over, but left early enough that we could enjoy a beautiful evening by the lake. The next day the six of us climbed Eagle Cap, one of the highest mountains in Oregon at 9,572 feet. The day was perfect, with sun and a few clouds, and we were kept cool with a stiff breeze. Nobody else was on the mountain so we had the summit to ourselves. The 360-degree view was spectacular; we could look down at several lakes, including the vividly green Glacier Lake. After returning to our campsite for lunch, we headed out for a 5-mile loop in the Lake Basin area that took us past more gorgeous lakes, including Moccasin, Douglas and Crescent Lakes. On our third day, we climbed over the Ivan Carper Pass and headed down to Minam Lake. This was a relatively short hike, but included considerable elevation gain and loss. After finding a perfect campsite at the lake, including a fire ring (Minam is one lake that allows campfires), we hiked up to the gorgeous Blue Lake, a smaller lake nestled in a cirque formed by towering granite walls. A couple of our braver companions took the plunge into the chilly waters, but quickly dried off in the sunshine. That evening we enjoyed a campfire that was most welcome as temperatures dropped dramatically once the sun went down. Three of the participants had already decided they were not going to go home on the designated day, but would stay on for another two nights to make the most of the perfect weather and other trails that needed to be explored. So



in the morning, Laurie, Jeanine and Betty headed down the West Fork Lostine River Trail to the trailhead (Laurie taking over as trip leader), while Scott, Brad and Chris headed for the Copper Creek trail. While taking a break from the steady climb up, we met a couple of horsemen, one of whom told us about the old trapper’s cabin that was in the area; he had visited it when a kid with his father, but wasn’t quite sure how to get there. Brad spotted a red roof across the valley and the horseman confirmed that it was the cabin. After the three of us found another perfect campsite right by a crossing of Copper Creek, we set off to try to find the cabin. Somehow we stumbled across a rough trail which indeed took us up to the granite slab on which perched this allegedly 100-year old structure. That was a real bonus for us as we explored the cabin and the surrounding meadow where obviously hunters camp as there were several fire rings. The next day we hiked up through beautiful Alpine valleys and up rocky trails to a ridge overlooking the badly named Swamp Lake. This is one of the most beautiful lakes we had seen. The trail down was steep but we all agreed we needed to visit the shoreline. After lunch and exploring the lake, we climbed back up and headed down to our camp, finding another lake on our way down. During the whole day, we met only three other backpackers. It was hard leaving the next day as we woke to a cloudless sky, but commitments in Eugene gave us no option but to hike the five miles back to the car and head home. Brad tracked our footsteps on his GPS and announced at the end of the extended trip that we had done about 50 miles—considerably more than the advertised 17-mile loop. We are already planning a return trip to the Eagle Cap Wilderness in 2014. Members: Brad Bennett, Laurie Funkhouser, Betty Grant, Scott Hovis, Chris Stockdale, Jeanine Taylor.



Trail Maintenance

Spencer Butte Trail Maintenance

March 30, 2013

Leader: Matthew Bell

Trail Maintenance: 2 miles, 500 ft. (Moderate)

WE MET UP AT THE FOX HOLLOW TRAILHEAD to continue our work to improve the Tie Trail. We started where we left off during last month’s outing. We continued to work to widen and re-grade the trail and build rock retaining walls from found and hauled in rock. This time we also were able to bring in gravel using the power-wheelbarrows to form a nice surface for hikers to hike on. Dan worked especially hard selecting the right rocks for the outer retaining walls. Autumn and Chyanne were especially helpful spreading gravel. Autumn and Roberta also worked together to create a perfect rolling drain dip in the trail to drain water off the trail to keep a wet muddy spot from recurring next year and undoing the work we had done in this section over the last two outings. Dave and Ed hiked further up the Tie Trail and worked to improve drainage.

Members: Matthew Bell, Roberta Chord, Larry Dunlap, Autumn Edwards, Chyanne Edwards, Clara Emlen, Dan Gilmore, Holger Krentz, Todd Larsen, Ed Lizewski, Dave Predeek, Jim Whitfield. Nonmembers: David Saul, Austin Friedner.

Obsidian Limited Access Area

August 2, 2013

Leader: Todd Larsen

Trail Maintenance: 12 miles, 1,500 ft. (Moderate)

WE MET UP WITH A COUPLE OF OTHER FOREST SERVICE VOLUNTEERS at the ranger station bright and early Friday morning. The previous day's thunderstorms had pulled our wilderness ranger onto fire duty, but we were left with the instructions and tools for our project. We hiked into our first meadow project early on Friday and began building check dams over an old trail that cuts through the meadow. After creating over 35 of them, we began a late afternoon hike up to Obsidian Falls for our base camp. Luckily we arrived after the storm clouds had passed on. On Saturday, we finished up the previous day's meadow with an additional five dams before moving on to the next area. At our second project location, we installed almost 100 check dams; we really got the system down! Sunday was spent hiking out, and performing some light maintenance in Sunshine Meadow as well as obliterating several fire rings. Members: Betty Grant, Todd Larsen.

Spencer Butte Trail Maintenance

August 28, 2013

Leader: Matthew Bell

Trail Maintenance: 2 miles, 500 ft. (Moderate)

OUR GROUP MET UP AT THE MAIN PARKING LOT and got tools to get ready to improve the Main Trail and the upper section of the Tie Trail. We hiked up the main trail checking culverts and clearing drainage ditches and we did the same at the top of the Tie Trail. We'd packed in a couple of machetes to help us cut back the clump of blackberries near the top of the Tie Trail. In addition to hacking back blackberries we cut back over-growing plants from along the sides of the trails. We also began picking up garbage along the way, a task we continued doing all the way to the summit eventually collecting a half garbage can full. In the newer section of switchbacks we added a lot of branches to re-block one of the switchbacks that people continue to cut and remove the branches we add. Hopefully, what we added will take a while to be removed. Members: Matthew Bell, Roberta Chord, Larry Dunlap, Autumn Edwards, Laurie Funkhouser, Dan Gilmore, Janet Jacobsen, Todd Larsen, Pat Soussan, Jim Whitfield. Nonmembers: Roy Whang.

Spencer Butte Trail Maintenance

September 28, 2013

Leader: Matthew Bell

Trail Maintenance: 2 miles, 500 ft. (Moderate)

WE MET AT THE WILLAMETTE AND 52ND TRAILHEAD for our first Saturday morning after our summer schedule. The plan was to armor the sides of ditches and culverts to help prevent the trail edges from sloughing into them and prevent flowing water from eroding the trail and culverts. We hiked up

from the trailhead to where Christer and Josh of Parks and Open Space had staged the power-wheelbarrows, tools, rock, and gravel. We divided up the tasks and equipment and headed up the Ridgeline Trail to just below the switchbacks and began working to line the trail edge along the drainage ditches. After adding the rocks we began to bring up gravel to improve the trail bed. In preparation for further gravel by the NW Youth Corp we built up gravel and the trail over places that cause power-wheelbarrows to tip and roll. Members: Matthew Bell, Roberta Chord, Chyanne Edwards, Trenton Edwards, Clara Emlen, Dan Gilmore, Pat Soussan, Jim Whitfield. Nonmembers: Jane Moore, Ian Kwasowski.



Bus Trips

The South Coast

July 16, 2013

Leader: Mary Ellen West

Assistant and Photographer: Rick Ahrens

THIRTY-FIVE OBSIDIANS AND FRIENDS enjoyed this trip to the coast. Our route took us to Coos Bay via I-5 and Highway 38, showcasing the beautiful Umpqua River and the Dean Creek Elk viewing area. We spotted small herds of both bull and cow elk, peacefully grazing in their separate fields. Coming home we drove up the coast to Florence and home on Highway 126, always a pretty drive. First stop was the Coos Historical and Maritime Museum located at Simpson Park in North Bend. Our outstanding guide, Steve Greif, gave a brief



talk about the displays. This small museum is well organized to showcase displays of local history: from Native American culture to the timber industry, fishing and maritime activities. The collection of Indian basketry is notable. Also of interest is the fully restored *Merci* boxcar given to the State of Oregon following WWII. The French people gave one of these boxcars, filled with gifts, to each of the states in gratitude for the American citizens relief efforts following the war. Steve was very excited to announce that on the day of our visit, construc-

tion was beginning on a new, much larger museum to be located on the waterfront. As we approached the actual coast line, we became more aware of the moist, chilly coastal wind – quite a change from the hot Willamette Valley. Choosing the most sheltered area available, we had our lunch at Sunset Bay picnic area. This also provided a chance to visit with some of our new riders. Next stop was the Simpson Reef and Shell Island overlook which is part of the Oregon Islands National Wildlife Refuge. This is home, at times, to northern elephant seals, harbor seals, California sea lions and stellar sea lions. All four species were present on this day and we witnessed two young male elephant seals practicing their sparring skills. Rick Ahrens added interest to this stop by sharing his knowledge of the sea mammals and birds of the area, as well as setting up his spotting scope to provide closer views. After a quick drive through at Cape Arago, where we were delighted to see a young deer grazing, we reached our final stop at Shore Acres State Park. This delightful setting was once the Simpson family estate. This well to do family played a major role in the development of the Coos Bay/North Bend area. The large gardens are impressive, with different kinds of flowers blooming in different seasons. The lovely rose garden is an official All American Rose Selection display site. Some of us took a short walk along the coast line of the former Simpson estate, noting that erosion of the cliff wall has reached one corner of the former family tennis court. Members: Thomas Adamcyk, Rick Ahrens, Ethel Allen, Bill Arthur, Barbara Beard, Paul Beard, Paula Beard, Ray Cavagnaro, Mary Lee Cheadle, Sharon Cutsforth, Clara Emlen, Barbara Flanders, Dennis Flanders, Ray Jensen, Sandra Larsen, Barbara Payne, Don Payne, Virginia Prouty, Liz Reanier, Ginny Reich, Susan Sanazaro, Janet Speelman, Richard Speelman, Mary Ellen West, Cristy White, Robert York. Nonmembers: Geri Nelson, Doug Hughes, Maxine Hughes, Betty Dickerman, Mary Hawkes, Mary Lou Letsom, Marilyn Lynch, Dorothy Shoop, Jim Shoop.

**Ashland Shakespeare Theater—Crater Lake
September 10–11, 2013
Leader: Verna Kocken
Photographer: Sharon Cutsforth**

OUR BUS LEFT EUGENE AT 8:00 AM and headed south on I-5. We enjoyed a coffee break at the rest area just north of Roseburg, resumed travel and arrived at Jacksonville about 11:30 AM. The group of 24 had lunch on our own. Several of us rode the trolley tour and saw the creek where gold was discovered, heard the stories of the two town bells, and enjoyed the historic brick buildings of the town center and residences.

We checked into a Medford Best Western Motel for an afternoon rest, then left for dinner and exploration of Ashland. A contemporary band provided a concert on the green in front of the Elizabethan Theater. Our play, *A Midsummer Night's Dream*, was a production full of color—from the costumes, to the projected lighting, to the groups of intertwining characters and sub-plots. Thoroughly enjoyable and done with verve.

Though our theater night did not get us back to the motel until about 11:30 PM, our group was loading and ready to go at 8:45 AM. We visited three spectacular Rogue River parks, lunched at Annie Creek Restaurant, and entered Crater Lake



National Park. Our visit to Crater Lake was brief, but we saw the lake at its stunning best.

We exited Crater Lake Park through the north entrance and traveled the North Umpqua Highway, with a pie and ice cream stop at the Steamboat Inn. We arrived back at the Shopko parking lot at a little after 6:00 PM.

Attending were Obsidian members: Tom Adamcyk, Bill Arthur, Don Baldwin, Barbara Beard, Paul Beard, Paula Beard, Mary Lee Cheadle, Sharon Cutsforth, Barbara Flanders, Dennis Flanders, Marge Hislop, Verna Kocken (leader), Pat Jeffries, Barbara Payne, Don Payne, Liz Reanier, Mary Ellen West. Nonmembers: Judy Adamcyk, Betty Dickerman, Edith Pattee, Robert Pattee, Terri Pattee, Judy Phelps, Jan Sears.

**End of Summer BBQ
September 24, 2013
Leaders: Barb and Paul Beard
Photographer: Janet Jacobsen**

HAVE YOU EVER SEEN THE RAIN?, by Credence Clearwater Revival, seemed to be the theme song for 31 Obsidians and friends, plus one bus driver, enjoying the experience and fighting with Mother Nature as we set out for our destination of Paradise Campground on the beautiful McKenzie River. We took the back roads from McKenzie View Drive via Camp Creek Road to Deerhorn Road, all with excellent views of the McKenzie before arriving at Leaburg. The spirit of these hardy Obsidians was not dampened as we arrived at Leaburg Lake and the beautiful shelter recently constructed by EWEB, equipped with natural wood slab tables, beautiful architecture and rafters so unique to keep birds from settling inside the pavilion. A video of the McKenzie, recreation, fishing and boating, along with overhead music was just too good to be true. The coffee and goodies for our break was just great also. The ducks, dam area, and fish hatchery near the pavilion is a must see next time you are in the area of Leaburg Lake. It is also a great place to yak.

Trekking on from Leaburg Lake to Paradise campground it continued to pour but it let up long enough to pitch four big shelter tents, light fires, set tables, and begin cooking. On the menu was everything from appetizers of sockeye salmon on a

stick to salads, desserts, hamburgers, ribs, and kabobs, with baked beans, too. Of course, s'mores wrapped up our BBQ. All of us were stuffed and pretty dry considering how much liquid dropped out of the sky.

As we took down food tents and shelters to head out for



Belknap Springs, the sun peeked out for a few minutes to give us time to load the bus. Belknap Springs was a welcome sight with an indoor gift shop and snacks. Janet Jacobsen and Judy Newman spent time in the swimming pool while the rest of the group walked across the river to enjoy the pools, waterfalls, and pavilion.

We were fortunate to have relatives of Sharon Cutsforth from Wisconsin joining us for the day. Our trip was great fun even in the rain, and again we found out—rain or shine—Obsidians are handy, resourceful, and full of energy.

Another highlight was Don Payne receiving his 25 Leader patch. He also received a Counting Noses certificate for keeping track of everyone on bus trips. He joined the club in 1970 and was president in 1975. He has previously received his Ten Peak award and his 100 patch award.

Members: Tom Adamecyk, Ethel Allen, Bill Arthur, Barbara Beard, Paul Beard, Louise Behnke, Mary Lee Cheadle, Sharon Cutsforth, Rosemary Etter, Barbara Flanders, Dennis Flanders, Janet Jacobsen, Pat Jeffries, Verna Kocken, John McManigal, Lenore McManigal, Judy Newman, Barbara Payne, Don Payne, Virginia Prouty, Liz Reanier, Dick Spellman, Jane Spellman, Christy White. Nonmembers: Judy Adamecyk, Bill Austin, Linda Austin, Tina Behnke, Lloyd Bissell and Judy Phelps. Our driver was Augie.

Extended Trips

John Day River Float
May 10—May 14
Leader: Barb Revere

THIS TRIP WAS THE SUBSTITUTE FOR THE OWYHEE RIVER TRIP on the same dates, which was cancelled due to

low water. We put in at the Clarno Boat Ramp, NE of Madras, and takeout was at the Cottonwood Bridge, SE of Wasco. A consolation trip it was not! We had summer weather in May. There were few other boaters on the river, and we all enjoyed a mellow float through 70 miles of the deep and ever changing John Day River Canyon. It was just lovely, too beautiful for words, magnificent, fabulous and absolutely spectacular! When we ran out of new superlatives, we just repeated ourselves. Wildlife spotted included: red-winged blackbirds, canyon wrens, ouzels, magpies, mergansers, mallards, porcelain ducks, Canada geese, wild chukar partridges (introduced as game in 1951), red tail hawks, osprey, bighorn sheep, and mule deer. A young golden eagle sitting calmly beside the river, almost within reach, was a first sighting for a few of us. Obsidians Scott Hovis, Carol Carver, Andy McIvor, Mike Piehl and Barb Revere were joined by guests Mary Carver from North Carolina, Scott and Kimbrough Elstad from the Portland area. Bill from Lake Oswego joined the group as an 'independent' with Ouzel Outfitters. The river guides, Neely, Jarrod and Tim, were impressive, providing tasty and nourishing meals as well as geologic commentary and wildlife spotting. Each morning chukars in nearby brush announced a wakeup call at first light. A match held to *The Blaster* signaled that coffee was soon ready. There was plenty of fun for our adventurous gang with inflatable kayaks along for those who wanted a break from the paddle rafts. Swimming and hiking rounded out the evenings, as did watching the guides prepare great meals with perfect choreography. Everyone was talking up a proposed 2014 Owyhee River float as we unloaded at Cottonwood Bridge. Thanks to Pat Esch who organized, and did most of the work for the original Owyhee trip. Barb Revere took an easy hand-off and led the John Day trip.

Women's Waldo Lake Canoe/Kayak
September 5, 2013
Leader: Patricia Esch
Photographer: Nancy Whitfield
Canoe: 0 ft. (Easy)

THURSDAY AFTERNOON, fourteen kayakers moved into Islet Campground at Waldo Lake, and the weather moved in with us. Inch sized hail pelted us, and then it rained and blew and misted until noon the following day. Out came the rain gear. Fortunately



ly, we had canopies to protect our kitchen and dining tables, so we didn't get too wet scampering between them. A lovely fire after the *Yum* meal with apple bars took the chill off before bed. Any thought of kayaking in the morning on Friday was dashed by blowing mist across a gray lake. No Waldo blue here. The boats stayed under cover, and out came the hiking boots. The avid hikers did The Twins, a pair of cinder cones, a 6-1/2 mile climb with 1,600 feet elevation gain and a great view of the Cascade peaks above the cloud sitting on the lake. They reported that it was clear on the east side of the mountains! Another group chose to hike south along the shore trail, protected from the blowing mist by the trees. In the late afternoon, when the storm let up a bit, a few of us braved the water in our kayaks, paddling around in the bays to avoid the rough waves blowing up from the south. Fantastic hors d'oeuvres, salmon burgers, Cadillac cookies and a fire rounded out day two. Yes! A clear, windless day for perfect kayaking on Saturday. We semi-broke camp and rushed (sort of) to the now blue lake. Some of the boaters opted to paddle along the north shore and part crossed toward the northeastern end, and then back along the shore, with a couple of swimming forays along the way. The infamous Waldo wind stayed away, leaving mirrored surface for our one perfect day. Special thanks to Nancy for helping me as an unofficial assistant, Pat S. for a second canopy, Jorry for providing games to pass the wet time and everyone for fun and cooperation. Members: Barbara Aten, Anne Bonine, Jake (Gail) Bradshaw, Clara Emlen, Patricia Esch, Joella Ewing, Sharon Friedland, Mary Livingston, Lou Maenz, Helen Martz, Judy Newman, Jorry Rolfe, Pat Soussan, Nancy Whitfield.

Leavenworth Camping & Hiking

August 19, 2013

Leader: Dan Christensen,

Assistant & Photographer: Jim Duncan

Extended Trip

SEVENTEEN OBSIDIANS JOURNEYED 400 MILES to Eightmile Campground on the Icicle River near Leavenworth, WA for a late summer Extended Trip. We camped for four nights and had three full days for hiking either in the adjacent Alpine Lakes Wilderness or in the area surrounding Stevens Pass, about 40 miles from our camp. Two or three moderate to difficult hikes went out every day to a number of beautiful lakes in the area. Colchuck and Stuart Lakes in the Alpine Lakes Wilderness and Lake Valhalla on the Pacific Crest Trail near Stevens Pass were some of the favorites. At the end of a good day of hiking, Jim Whitfield's newly constructed solar shower units proved to be a big hit. Happy hour each evening was popular as usual, and for dinner, three different groups of campers collaborated to provide tasty and plentiful meals for the first three nights. On the fourth night, most of us traveled into Leavenworth to soak up the Bavarian atmosphere that the town is famous for, and for dinner, drinks and singing to the music of an accordionist dressed in lederhosen at a Bavarian restaurant, King Ludwig's. Later in the evening, many attended a performance of *The Sound of Music*, staged in a beautiful outdoor setting with the mountains as a backdrop. The reviews by those who attended were uniformly positive. The weather was perfect, the campsite was accommodating, and our friendly and congenial group made for a wonderful trip to a very beautiful area. Members: Anne Bonine, Keiko Bryan, Dan Christensen, Jim Duncan,



Sharon Duncan, Bea Fontana, Mary Livingston, Frank Lulich, Helen Martz, Valerie Metcalfe, Nola Nelson, Jack O'Donnell, Jorry Rolfe, Randall Sinnott, Chris Stockdale, Jim Whitfield, Nancy Whitfield.



Bike Trips

Row River

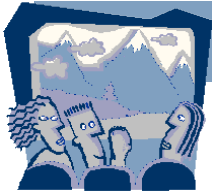
August 17, 2013

Leader: Guy Strahon

Bike: 30 miles, 300 ft. (Moderate)

ON SATURDAY, AUGUST 17TH, a group of 15 enthusiastic cyclists enjoyed a gorgeous day by biking on the Row River Trail to Wildwood Falls. A post in the middle of the trail jumped out and knocked one of our cyclists down, but she was not injured. Another member of our party was enjoying the wind whistling through his silver hair, when we hollered to remind him that he forgot his helmet after a brief stop. We arrived at the falls at noon for lunch. We were entertained at the falls, first by a group of young men in swim suits jumping off the 12' cliffs into the water, and then as we were leaving a group of young women doing the same. The scenery was spectacular, and the falls looked good as well. After lunch it was 15 miles downhill to our starting point for a traditional watermelon feast. A tasty end to a lovely day! Members: Anne Bonine, Barbara Bruns, Jim Clarkson, Patricia Esch, Kitson Graham, Peter Graham, Kathy Hoeg, Holger Krentz, Lana Lindstrom, Guy Strahon, Judy Terry. Nonmembers: Barbara Gunther, Alice Krentz, Jean Stover, Don Orton.

At The Lodge



POTLUCK

Friday, October 25 at 6:30 PM

America's Best Rainbow:

An Insider's Look at Rainbow Bridge National Monument, Utah

RAINBOW NATURAL BRIDGE is located in the rugged canyon country and red rock desert of the American Southwest. It is one of the world's greatest singular geologic wonders, yet Rainbow Bridge remained hidden to the outside world until well into the 20th century. Who took the first photographs of Rainbow Bridge? How was it first mapped? How are natural bridges formed and what is its geologic story?

Eugene resident Doug Crispin worked as a National Park Service ranger during the centennial year of Rainbow Bridge as a National Monument in 2010. He commuted over 3,000 miles by motorboat, hiked 91 times into the Monument, and got to experience the many moods of the desert Southwest.

Join us as Ranger Doug shares an exclusive insider's look at this scenic treasure.

October Potluck

Friday, October 25, 2013

Social hour, 6 PM Potluck, 6:30 PM Program, 7:30 PM

Obsidian Lodge

Bring your favorite potluck dish to share...along with plates, utensils and cups... plus \$1 to help cover club expenses.



ExploraTalk

Tuesday October 15 at 7 PM

Southeast Alaska's Remote Tebenkof Bay Wilderness

THE OCTOBER 15 EXPLORATALK, featuring southeast Alaska's extremely remote Tebenkof Bay Wilderness, will be presented by science writer Valerie Rapp, who explored it on a kayak expedition in June. Valerie was invited on the expedition to be a visiting writer in Alaska's *Voices of the Wilderness* program.

Tebenkof Bay Wilderness, part of a larger wilderness complex of islands and straits sprawling across the waistline of the Tongass National Forest, is so remote that no more than 50 people visit it a year. There are zero miles of hiking trails, but it does have abundant sea otters, bald eagles, and humpback whales. Valerie will use the story of her trip to

start a discussion about who will be the future constituency for Tebenkof and other little-known wildernesses, and what we want our legacies to be fifty years from now in terms of wilderness values.

Valerie is the author of six books, including *What the River Reveals* (2008, ValGene Press), and numerous scientific publications. She has also collaborated with artist Jennifer Williams on educational installations using images and words to explore healing our wounded watersheds, ecological recovery at Mt. St. Helens, and the importance of salmon.

Upcoming

Beach Cleanup Rescheduled

THE SOLV BEACH CLEANUP, rained out in September, has been rescheduled for Sat., October 26. We will meet at 8 AM at Lowe's on West 11th to carpool to Washburn State Park. See September *Bulletin* and sign-up sheet for details.

SAVE THE DATE

Owyhee Rafting Trip—5 days May 10-14, 2014

\$1,105 members; \$1,110 nonmembers
More details in the November newsletter
Contact: Diane Schechter, 687-1887

Canyon de Chelly Extended Trip

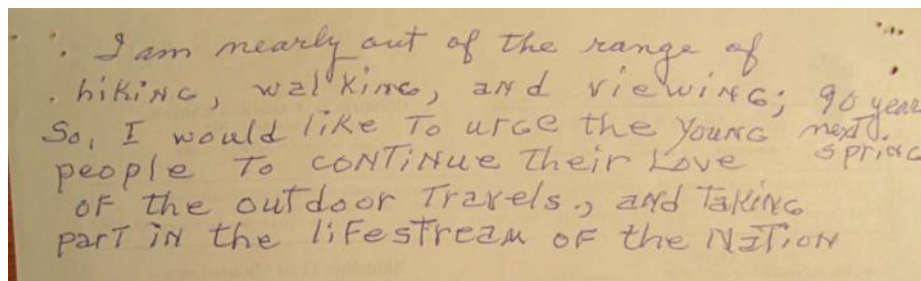
Lana Lindstrom

IN MAY, RICHARD HUGHES AND I were fortunate to join ten others on a Chemeketan Extended Trip to Canyon de Chelly National Monument in NE Arizona. For almost a week, every day, we hiked 6-10 miles above and through this beautiful canyon, admired ancient rock art on red sandstone, became acquainted with three generations of a Navajo family, and camped under clear, starry skies. The only way one can explore this treasure is with a Navajo guide, so staying at a base camp in the monument was perfect. It was such a great experience that I was tempted to lead an Extended Trip there for the Obsidians. But then, I thought, why would I do this when someone else is willing to do it again...for the 27th year!

Hardin King is once again leading this trip, May 25 - 31, 2014. The cost is \$400 which includes daily guided hikes and camping fees. Transportation to the area and food is additional. For more detailed information, contact Hardin at 503-845-9340, or me at 683-1409.

Lifestream of the Nation

WHEN I ARRIVED TO SANTA CLARA'S FRED MEYER TODAY to replace the old Obsidians Monthly Calendar on the bulletin board for a new one, I found a surprise. Somebody wrote a nice message for me and I would like to share it with all Obsidians.



I am nearly out of the range of hiking, walking, and viewing; 90 years. So, I would like to urge the young people to continue their love of the outdoor travels, and taking part in the lifestream of the Nation.

Darko Sojak

Obsidian Calendar

October

15 Tue Tebenkof Bay Wilderness ExploraTalk
15 Tue Fall Color Bus Jensen 345-5366
17 Thu Oregon Gardens Ext Trp M Lindstrom 683-1409
18 Fri Spencer Butte Sunset/Moonrise Hike Sojak 525-1124
25 Fri America's Best Rainbow Potluck
26 Sat Spencer Butte Trail Maintenance Bell 503-884-8829
26 Sat Tamolitch Pool to Clear Lake Hike Lipton 736-7498
27 Sun McKenzie View-Bottom Loop Bike Strahon .. 689-0753
27 Sun North Fork Willamette Hike E Hackett 953-7046

November

09 Sat Eel Creek Hike M Hackett 953-7046
30 Sat Spencer Butte Trail Maintenance Bell 503-884-8829

December

10 Tue Obsidian Lodge for the Holidays Bus
17 Tue TBA ExploraTalk

SAVE THE DATE

Obsidian Summer Camp Strawberry Mountain Wilderness Area (OR) August 1-6, 2014

OBSIDIAN MEMBERSHIP REPORT

Active Members	449
Associate Members	19
Honorary Members	5
Junior Members	10
Life Members	15



OBSIDIANS, INC. OBSIDIANS, INC. IS A NON-PROFIT ORGANIZATION
P.O. BOX 51510
EUGENE, OR 97405
RETURN SERVICE REQUESTED

PRESORTED STANDARD
US POSTAGE
PAID
EUGENE, OR
PERMIT 803



October 2013



Waldo Lake—photo by Pat Soussan (See trip report on page 12.)