

Inside This Issue

Annual Meeting	1
Due Renewal	1
Fall Beach Cleanup	1
Obituary	2
Forest Roads	2
Board Nominees	3
Board Notes	4
Trip Reports	5-21
Potluck	22
ExploraTalk	22
Upcoming Bus Trips	23
Welcome New Members	23
Calendar	23
Picture of the Month	24

Dates to Remember

September 16	ExploraTalk
September 26	Potluck
October 4	Bulletin deadline
October 10	Annual Meeting
October 15	Board Meeting

Complete current schedules at:
www.observians.org or
Register-Guard – Outdoors – Tuesday

Awards... and Free Dessert Come to the 2014 Annual Meeting

MEMBERS ARE INVITED TO THIS YEAR'S ANNUAL MEETING on Friday, Oct. 10. We will have light refreshments at 6:30 followed by the meeting at 7 PM at the Lodge. Committees will give brief summaries of their activities and new board members for 2015 will be elected. Read about our new Board nominees on page three.

Awards for trips, leaders, and climbs will be presented. Special awards will also be presented. Members are encouraged to come to cast their votes for the new board members.

Dues Renewal Time!

PLEASE COMPLETE THE ENCLOSED RENEWAL FORM and return it with your \$30 check as soon as possible. Online banking checks are welcome, too. Please include any contact changes on the form. Thanks for renewing your membership!

Fall Beach Cleanup

September 27

Leader: Joella Ewing

At Oregon Dunes National Recreation Area

THIS YEAR WE OBSIDIANS WILL CLEAN A BEACH at the Oregon Dunes National Recreation Area near Reedsport on Saturday, Sept. 27. We will meet at South Eugene High School at 7:30 AM to be at the beach by the 10 AM SOLV check-in time.



Wear or bring clothing for all kinds of weather, no matter what the forecast, and bring a large reusable cloth collecting bag, gloves, and a sieve for sifting small plastic particles that can kill birds and fish if ingested. Lunch, snacks and water are always a must on Obsidian trips, though some may want to eat out and spend more time at the beach. Drivers will declare their preference.

Obituary

Clare Tucker 1942–2014

MEMBER CLARE TUCKER PASSED AWAY ON JULY 4TH after a brief illness. Her first trip with the club was in 1991 and she continued to be quite active until very recently. She earned the 25 leader award and participated in 130 activities with the club. Perhaps her favorite hike to lead was Four In One Cone. She led it 15 times and was scheduled to lead it again in September. Clare especially enjoyed cross country skiing and also attended four summer camps, most recently in 2007 at Yellowstone. She is survived by her husband, Obsidian member Chuck Mitchell, and a son.

A Celebration of Life was held at the Lodge in August.

Editor's Note: An obituary for Clare can be found in the July 13 issue of The Register-Guard.

Forest Service Roads: Your Input Needed For Long-Term Strategy

Joella Ewing

FOREST SERVICE ROADS ARE IMPORTANT for almost every activity on National Forests: managing fire, hiking and fishing, timber harvest, hunting, ecological restoration, firewood, Christmas tree cutting, and more. With an aging road system and limited maintenance budget, the Willamette National Forest is working on a road investment strategy to help guide road management decisions into the future.



The Willamette National Forest will be hosting an open house and road investment presentation soon. In the meantime, you can learn more about the Willamette National Forest's road investment planning, and let them know which destinations are most important to you for continued maintenance, by visiting www.fs.usda.gov/goto/willamette/roads.

THE OBSIDIANS FACEBOOK PAGE www.facebook.com/#!/theobsidians

OBSIDIANS, INC

P.O. Box 51510, Eugene, OR 97405

Website: www.obsidians.org

Board of Directors

Matt Bell, President
Don Colgan, Vice President
Susan Wanser, Secretary
Stewart Hoeg, Treasurer
Sharon Cutsforth, Pat Esch, Tom Musselwhite, Shellie Robertson & Elle Weaver

Board meetings are held at 6 PM the first Wednesday of each month, except October when it is the Wednesday after the Annual Meeting, and no meeting in August.

Committee Chairpersons

Byways By Bus Liz Reanier
Climbs Brian Hamilton
Concessions Patty McAfee
Conservation/SciEd Joella Ewing
Entertainment Susan Wanser
Extended Trips Chris Stockdale
Finance Stewart Hoeg
Librarian/Historian Lenore McManigal
Lodge Building Doug Nelson
Lodge Grounds John Jacobsen
Membership Elle Weaver
Online Wayne Deeter
Publications Lou Maenz
Publicity Mary Hamilton
Safety Pat Esch
Summer Camp Lana Lindstrom
Summer Trips Tom Musselwhite
Trail Maintenance Matt Bell
Winter Trips Anne Bonine

⁷⁴ OBSIDIAN Bulletin

© 2014

Published monthly, except August and December. Articles, story ideas, letters to the editor and other editorial submissions should be emailed to:

bulletin@obsidians.org

For reprint rights, contact:

The Obsidian Bulletin

P.O. Box 51510, Eugene, OR 97405

**Deadline
for October 2014 Bulletin
Saturday, October 4, 2014**

Assembly/Mailing Team For July/August Bulletin

Assembly & Mail Manager - Lou Maenz
Assembly Team - Tom Adamczyk, Sharon Cutsforth, Clara Emlen, Yuan Hopkins, John & Lenore McManigal, and Margaret Prentice

Editorial Team

Writing & Editorial Staff - Bea Fontana, Joanne Ledet, Lou Maenz and Ethel Weltman
Copy Editors - Ethel Weltman & Nancy White
Graphics Design & Desktop Publishing - Stewart Hoeg

2015 Board Nominees

JOHN COOPER: I have been a member of the Obsidians for almost 15 years. Through Obsidian mountaineering classes and climbs I have been able to pursue my love of the mountains. I have also participated in trail maintenance projects and I am on the Winter Trips Committee. I now have the time to more fully participate with the Obsidians. I am a former owner of a café and bakery. I was a child welfare social worker for the state and more recently was a bus driver for people with disabilities. I was on the board of a hiking club when I lived in Ireland. It would be an honor to serve on the board.



SHARON CUTSFORTH: I have enjoyed serving on the Board for the past three years and appreciate the nomination to continue for another three. Learning about the work and the challenges of other committees has been helpful in relation to serving on the Bus Committee. As a Bus Committee member I have worked on trip planning and hospitality, and serve as secretary and trip leader. I enjoy creating the bus trip flyers and appreciate the work of the Publicity Committee in helping promote our trips. I have also been on the Membership Committee and assisted with preparing mailings of the *Obsidian Bulletin*.

My goals for the upcoming term would be to support the activities of all committees and maintain a close tie between the Bus Trips Committee and the overall Obsidians organization. I joined the Obsidians after retirement in 2005, have gone on 66 bus trips and served as leader on nine. On these bus trips, I have made many new friends, saw many beautiful places in Oregon and surrounding

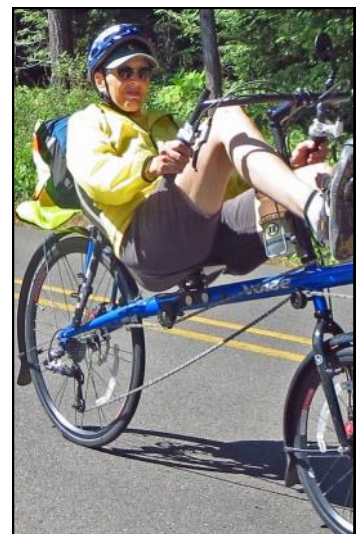
states and had the opportunity to learn about many things I might not otherwise have heard of. I am impressed by the number and scope of activities available through the Obsidians and the dedicated volunteer effort that makes the organization a success. As Obsidians we are blessed to have a beautiful Lodge (and grounds) in which to hold meetings and social events, and the opportunity to meet many interesting people. My intent is to remain involved as long as I am able and to serve to the best of my ability.



PAT ESCH: Now that I have been on the Board for one term, I generally know how it works and what is expected. So for the next three years I will feel more relaxed with my duties.

Canoeing was my first love growing up in Wisconsin. My father and I owned a white Old Town canoe together, on which I painted red stripes with a zebra head on the bow. Since I seemed to have artistic talent, I studied art in college and glassblowing in grad school. I moved to Colorado to set up a studio where I sold my glass work through shops, shows and craft fairs, and gave glassblowing demonstrations. I returned to Wisconsin in 1974 and began a new career, starting out as a dishwasher in a friend's restaurant and moving up the ranks to pastry chef, learning on the job. But something was missing, so I took classes at the local technical college in furniture making to satisfy my artistic bent, and have been having lots of fun making my

own furniture. At last came retirement and my move away from constant mosquitoes to Eugene to be near family. In the land of hiking, biking and kayaking, I joined every outdoor club I could find and did my obligatory three Obsidian trips in two weeks. Alas, it turned out to be too many clubs and not enough time. Un-joining a few clubs left me with plenty of time for the Obsidians and leading social bike rides to interesting places.



September Board Notes

By Susan Wanser

President Matt Bell called the meeting to order. Other Board members present: Don Colgan, Sharon Cutsforth, Pat Esch, Stewart Hoeg, Tom Musselwhite, Shellie Robertson, Susan Wanser and Elle Weaver. Also present were: John Cooper, Joella Ewing, Janet Jacobsen, and Lenore McManigal. The Board approved the minutes of the July 2014 meeting.

Treasurer's Report: Stewart Hoeg reviewed the Budget-vs-Actual Report and the Balance Sheet. The Board approved payment of the bills.

COMMITTEE REPORTS

Summer Trips (Tom Musselwhite): Ninety-two trips have been completed this season. Twenty-one trips remain on the schedule.

Climbs (Brian Hamilton): During the last two months, two climbs were cancelled, two were rescheduled, and eight were completed. Of the eight completed climbs, two did not make it to the summits. Five climbs are left on the schedule for the season.

Trail Maintenance (Matthew Bell): There were five trails outings in July and August. Each month there was an outing in Spencer Butte Park and another in the Obsidian Limited Entry Area. There was one trip to log-out the Maxwell Butte Trail in July.

Highways and Byways By Bus (Liz Reanier): July and August bus trips were successfully completed. The July trip to Mount St. Helens included 22 members and 8 nonmembers. The August Back to the Coast trip included 13 members and 6 nonmembers. The September 11 bus trip has been cancelled.

Summer Camp (Lana Lindstrom): The 2014 Summer Camp in the Strawberry Wilderness Area was very successful. 94 campers participated in various hikes and excursions.

Conservation, Science, & Education (Joella Ewing): The July ExploraTalk was attended by seventy-two people.

Entertainment (Susan Wanser): The next potluck will be on September 26 and will feature Mike Wolf speaking about bicycling in Cuba.

Membership (Elle Weaver): Eleven new member applications were presented. Currently there are 472 members.

Publicity (Mary Hamilton): Event Tent Purchase—A white, used 10'x10' event tent (with 4 removable sides) was generously donated to the Obsidians by local artists, Susan & John Siwinski, of Clay Dimensionals. We are considering this to be a temporary tent. Mary contacted many local businesses to find someone who could silk screen/paint/stitch the Obsidian logo directly to the valance (or to the tent peaks). Unfortunately, she could not find a local business willing or able to do this. The committee is considering ordering a removable banner with the Obsidian logo to (somehow) attach to the front valance on the tent or ordering a new tent, as originally approved by the Board.

Concessions (Patty MacAfee): Concession items were sold at Summer Camp; male Sport Tek t-shirts and whistles were pop-

ular items.

Online (Wayne Deeter): There are now 3,494 photos in 244 albums in the Obsidian photo gallery, up from 2,869 photos in 208 albums in July.

Library/Historian (Lenore McManigal): All of the trips featured in the July 2014 Bulletin have been recorded. Two bus trips which were done this summer have also been recorded.

Lodge Building (Doug Nelson): Thanks to John Jacobsen for his help in completing the repairs to the outside faucet. Janet Jacobsen organized a work party on 8/25 to mop floors and clean the Lodge in preparation for the Open House on 9/7. The following is her report on the work party. "Our moppers worked from 1:00-2:00 on August 25. Yuan Hopkins and Barbara Shomaker dusted, cleaned windows and mopped the entry way and the Scherer Room. Judy Garwood and Verlean McCoy mopped the floor of the big room and wiped the moldings. Jorry Rolfe and May Fogg mopped the bathrooms and kitchen. And I kept everybody busy. We had to change the water many times!" Thank you Janet and all!

Lodge Grounds (John Jacobsen): . There were two work parties to report for the summer: July 12—Routine mowing and blowing before the ExploraTalk. Thanks to Joella Ewing, Brenda Kameenui, Gary Kirk & Randy Sinnott for helping. August 19—Routine maintenance before the Clare Tucker memorial. Thanks to Joella Ewing, Brenda Kameenui, Joanne Ledet and Jim Whitfield. Also thanks to Scott Hovis and his son for the back-breaking work of splitting, moving and stacking wood for the Lodge. I think I may have missed some helpers for one, or both of these work parties - my apologies if I did. We moved all the grounds equipment, tools and supplies into their new home in the new storage building.

Safety (Pat Esch): The Safety Committee will be offering the Outdoor First Aid Course three Thursday evenings, January 8, 15 and 22, 2015. Laurie Monico will be teaching.

NEW BUSINESS

The Board approved all applicants for new membership.

There will be a "Thank You Pizza Party" to recognize the volunteers who worked on the storage shed to be held before the October Board meeting.

OPEN DISCUSSION

Oregon Parks and Recreation Department will hold Regional Trails Planning Workshops on October 30. Matt (or another Obsidian in his place) will attend in order to help present the needs/concerns of hikers.

The bypass trail to Mount Baldy is under construction. This will eliminate the current stretch of road-walking along the Ridgeline Trail.

ANNOUNCEMENTS

The Annual Meeting will be on October 10 at 7 PM, preceded by a dessert social at 6:30 PM.

The October Board Meeting will be on October 15 at 6 PM.

The meeting adjourned for food at Taste of India.

Trip Reports & Other Activities



Climbs

Mt. St. Helens

May 11, 2014

Leader: Marci Hansen

Climb: 10 miles, 4,600 ft.

THERE WERE JUST THREE OF US that ended up climbing Mt. St. Helens on Sunday, May 11. We drove to Cougar, Washington, arriving at 7:00 PM. We stood in line for about forty-five minutes to get our climbing permits, where we found out that nine hundred fifty people had purchased permits to climb and that the snow level was three miles above the trail-head. We camped at the Marble Mountain Sno-Park with hundreds of other people Saturday night. We started hiking at 5:30 AM. Maryanne and Jenn wore skis and I chose to leave my skis behind and hike. We all wore dresses along with ninety percent of the hikers in honor of Mother's Day. The weather was perfect with low winds and virtually no clouds. We summited in five hours. The snow conditions were great on the way up and we never needed crampons. The views into the crater and over to Mt. Rainier and across to Mt. Hood were gorgeous. With hundreds of people at the top all dressed up, the yelling and singing made it feel like a giant party. Definitely NOT a wilderness experience. Jenn and Maryanne skied down while I glissaded a full 2,500 feet. The snow was super soft and perfect glissading conditions. I met up with Jenn and Maryanne at the end of the snow and we walked back to the parking lot. It took us eight and one-half hours round trip. Jenn and Maryanne said the skiing was good in the middle, too icy at the top, and too slushy at the bottom. We had a great time. Maryanne declared this was the nuttiest climb she's ever done. Members: Marci Hansen, Maryanne Reiter. Nonmembers: Jennifer Bugley.

Mt. Hood

May 31, 2014

Leader & Photographer: Dave Beardsley

Climb: 7.2 miles, 5,200 ft.

ON SUNDAY, JUNE 1, eight climbers set out to climb the Old Chute route on the south side of Mt. Hood. The team included six members and two nonmembers. The climbers on this trip were interesting for two reasons. First, there were two sets of fathers and sons on this climb—Dave Beardsley and son Calvin, and Steve Johnson and son Justin. Both fathers had climbed Mt. Hood before, but this was a first for their boys. Calvin completed the climb at the age of fifteen. Second, only three of the eight climbers had summited Hood before this trip, so this climb was a first for five of the climbers! The standard south side route on Mt Hood was, until a couple of years ago, through the Pearly Gates to the east of our route, but still within



the crater rim. A snow ridge called the Hogsback led up to the base of the final short but steep and icy gate to the summit. Winds of change have shifted the Hogsback to the west which has left the old route wind scoured and rockier, so few climb this route today. The new standard route is to the west of the Hogsback and ascends through what was called the Old Mazama route. For some reason, it is called the Old Chute today. This route avoids the infamous bergshrund hazard on the old route, but adds a long, steep run-out snow slope and a final 60-foot steep icy chute at the top. We had an excellent time, great weather and seven out of the eight climbers summited. Members: Dave Beardsley, Danneille Harris, Marge Huseman, Steven Johnson, George Williamson. Nonmembers: Justin Johnson, Calvin Beardsley, Michael Morris.

South Sister

June 7, 2014

Leader: Wayne Deeter, Assistant: Danneille Harris

Photographer: Wayne Deeter

Climb: 17.3 miles, 5,000 ft.

WE CAMPED SATURDAY NIGHT not far from the northern part of the Green Lakes. Starting our climb only an hour before sunrise got us to the Prouty Glacier too late to do the headwall route due to the rock fall. The group decision was to divert to the



normal Prouty route. At that point, I had Danni move to the front and lead us over the bergschrunds. By the time we reached the summit, quite a few skiers were coming up from the south side, including Obsidians John and Lisa Manotti. We descended via the Green Lakes route in several long glissades. Members: Wayne Deeter, Danneille Harris, Rick Harris, Doug Orwick.

Mt. Hood

June 15, 2014

Leader: Danneille Harris

Climb: 7.2 miles, 5,200 ft.

COLD WIND AND CLOUDS WITH MISTY RAIN greeted us as we left the Timberline parking area a little after 1:00 AM on our bid for the summit of Mt. Hood. Not quite what the weather people had predicted. We remained optimistic and were rewarded when we climbed above the cloud cover near the top of the Palmer ski lift. Though not strong enough to stop us, the wind remained through the rest of the climb. All four of us made slow but steady progress to Crater Rock where we roped up. Crowding from other parties on the route was the most difficult part of the upper mountain ascent. All climbers reached the summit about 8:00 AM and celebrated the views for a few minutes on top. We would be the last party to enjoy the grand vista this day as clouds swiftly took over the mountain and visibility dropped dramatically. At times we could not see from one end to the other of a forty-four meter rope. Below Crater Rock, we navigated by compass and did get in a few good glissade runs on the descent. More rain on the lower mountain made the going slow, sloppy and soggy but not enough to dampen spirits. Reaching Timberline at noon, we changed to dry clothes and piled back in the car. After a quick stop for the traditional post-climb milkshakes at the DQ in Sandy, we were on the road again. Rotating drivers was necessary as we fought fatigue on the long drive home. After a few failed attempts for some, along with the challenging weather, this summit was particularly hard won. Congrats to Rick, Bill, and Ron on their first Hood summits. Thanks to Rick for assisting. Members: Danneille Harris, Rick Harris. Nonmembers: Ron Unger, Bill Lowder.

Mt. Washington Graduation

June 29, 2014

Leader: Brian Hamilton, Assistant: Alexander Ellis

Climb: 10.5 miles, 3,000 ft.

THE NIGHT BEFORE THE CLIMB, we arrived at the trailhead and were met by wind, threat of rain, noisy off-road vehicles, and the mosquito welcoming committee. In the morning, we got ready quietly to avoid waking the mosquitoes, started hiking at 5:20 AM, and waded through a bumper crop of bear grass along the trail. Since it was early in the season, there was still plenty of snow to obscure the upper half of the climbers' trail and block the usual route to the saddle below the rappel station. On the other hand, it made for great plunge-stepping and glissading on our descent down the west face of the mountain which is much safer than scree-skiing and getting clobbered with rocks from above. We followed some footprints and red flagging over the snow on our ascent to the north ridge until we realized that red flagging doesn't necessarily mark the trail; it just

means that someone else wanted to be sure they didn't get lost on their way back. We all reached the summit by 1:50 PM. The clouds had cleared, the wind died down, and it turned out to be a beautiful day. Once back on the Pacific Crest Trail, we hurried in an attempt to outrace mosquitoes and got back to the trailhead by 7:30 PM. Members: Rebecca Eastwood, Alexander Ellis, Brian Hamilton, Shawn Prime, Jennifer Rogers, Jim Woodard.

Middle Sister

July 9, 2014

Leader & Photographer: Roy McCormick

Climb: 18 miles, 5,300 ft.

TWO OBSIDIANS HEADED INTO THE OBSIDIAN LIMITED ENTRY area from Obsidian Trailhead on a lovely Wednesday morning. The bear grass and mosquitoes were near their peak



but we quickly climbed above their favored habitat and made camp on the snow near Sisters Springs. A 4:00 AM wakeup call on Thursday morning, breakfast, crampons on, and we headed up the Renfrew Glacier route in perfect conditions around 5:10 AM. There was lots of snow above 6,500 feet this year so we didn't have to take off the crampons until reaching the col between North and Middle Sister. Bob elected to stay and rest there while I ascended the last stretch to the windless summit, reaching the top around 10:15 AM. Some glissading was possible on the way down and we made good progress back to camp where we had lunch, packed up, and trudged back to the trailhead, arriving at the car before 5:00 PM. Another great trip and my tenth peak with the club. Members: Bob Harrison, Roy McCormick.

Mt. Washington

July 12, 2014

Leader: Alexander Ellis

Climb: 10.5 miles, 3,000 ft.

WE STARTED AT 6:00 AM FROM THE PCT TRAILHEAD. Our hiking pace was fast, leaning stands of bear grass stained our pants, and a recently super moon lit our way. Lucky route-finding along the climbers' trail provided us good footing and a reasonably direct course to the crest of the ridge, where we took our first longer break. Mosquitoes swarmed. While working our way along the ridge, we enjoyed occasional backward glances at Mt. Jefferson towering over little Jack. These peaks

were in our thoughts—most of us had recent or upcoming trips in the area and the view encouraged storytelling and sharing of plans. The base of the summit block was still empty when we arrived. The three rock pitches went smoothly (and, of course, loosely). No one fell. A more direct line up the second pitch would have probably been more fun. All five climbers reached the summit, where snacks were shared in the heat. After waiting nearly an hour to let two summit-bound parties pass us as our descent reached the top of the first pitch, the hike down was fast, dry and hot. We were all parched by the time we reached the parking lot, where a motorcade of Polk County Search and Rescue ATVs rolled through, covering us head to toe in brown dirt that stuck fast to our sweaty faces. A great trip with a great group! Members: Alexander Ellis, Marge Huseman, George Williamson. Nonmembers: Richard Partridge, Matt Mallet.

Mt. Jefferson

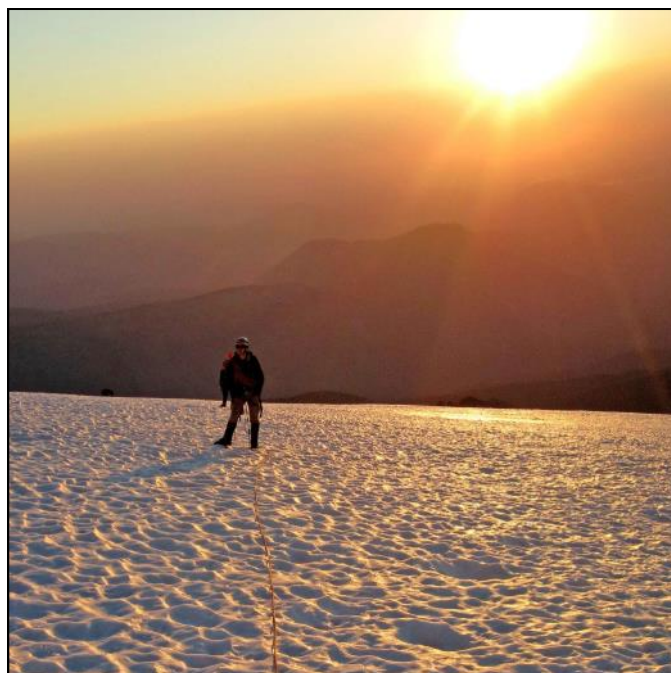
July 14, 2014

Leader: Brian Hamilton, Assistant: Randall Sinnott

Photographer: Brian Hamilton

Climb: 12 miles, 7,000 ft.

THE APPROACH TO OUR BASE CAMP started at the Whitewater Creek trailhead. There were few people on the trail and after a couple of miles we began seeing many wildflowers including



columbine, avalanche lily, penstemon, and cat's ear. Much of Jefferson Park was still buried under snow and we stopped at a small pond next to the Pacific Crest Trail to take a break before heading up the slopes of the mountain. We had just covered almost five miles on a well maintained trail and gained about 1,800 feet of elevation. The second part of our approach hike, also with a 1,800 foot elevation gain, was only about a mile long but was entirely off-trail. When we reached the edge of the Whitewater Glacier, we spent some time searching for the Beach. We did not bring enough fuel to melt snow for all of our water needs, so we needed a source of water. We finally found a small pond at the base of the glacier, a few hundred feet below us and over a quarter of a mile away. By 9:00 PM, our tents

were up and we tried to sleep before the next day's climb. At 4:30 AM, we roped up and started across the glacier. One climber was feeling under the weather so he stayed in camp and made arrangements to meet us at the trailhead. The three remaining team members spent two hours ascending the glacier and staying clear of crevasses when it became clear that the previous day's hike and lack of sleep had taken its toll on the leader. We turned around, descended back to camp, packed up, and hiked out. We met our fourth climber back at Jefferson Park and hiked out to the trailhead. Members: Brian Hamilton, Danneille Harris, Randall Sinnott, George Williamson.

Mt. Thielsen

July 20, 2014

Leader: Dalen Willhite

Climb: 10 miles, 3,800 ft.

WE CAMPED ABOUT A QUARTER MILE UP THE TRAIL the night before and were hiking by 4:00 AM to avoid the heat and crowds. All climbers summited on a beautiful, sunny day and we were on our way back down before noon. Members: Andrew McIvor, Dalen Willhite, George Williamson, Jim Woodard. Nonmembers: Michael Morris, Richard Partridge.

North and Middle Sisters

August 16, 2014

Leader: Alexander Ellis, Assistant: Dalen Willhite

Climb: 17 miles, 6,710 ft.

TRAILHEAD STROKE WAS HIGH. Our initial hike in was fast, reaching the first lava ridge in an hour and camp at Arrowhead Lake in under three hours. Along the way, we encountered some filthy PCT thru hikers. Richard, a former member of that peripatetic tribe, served as liaison. The cold water at Obsidian Spring was a boon under the hot sun. Most of the camp sites at Arrowhead Lake were closed for rehabilitation. After setting up camp and eating dinner, evening activities included swimming and staring over cliffs at a fiery sunset. Alarms were set for 4:00 AM the next morning. We were hiking just after 5:00 AM towards North Sister along a climbers' trail. We crossed the edge of the Collier Glacier on hard névé and descended to the notch between North and Middle Sisters, looking for the easiest way up the imposing scree field above us. Gaining the ridge through that mess was just as unpleasant as it had looked from below, but once on the (comparatively) solid rock above, we were moving well again. After some route-finding challenges weaving through notches and gendarmes, we reached the edge of a small snowfield along the so-called Terrible Traverse shortly before noon. Alex had a two or three foot slip just before leading the traverse. Though short, it was enough for an errant picket to lacerate his armpit. Dalen (and later Marge and Mike) assisted with cleaning and dressing the wound; lots of gauze and duct tape was necessary before a stable dressing was in place. On the traverse itself, hard snow made for loudly driven pickets. The rock quality made a charming irony of the mountain's former name, Faith. By 1:00 PM, five of us stood on the summit of North Sister—one climber decided to stay lower on the ridge. It was clear we did not have time to bag Middle Sister as well. To do so we would have needed to camp higher, make better route finding choices, and perhaps start earlier. Our descent back to camp took half the time of the way up, for a

total of twelve hours camp to camp. We were back to the parking lot two and a half hours later. Those of us that had previously done the approach from Pole Creek Trailhead felt that the Obsidian Trailhead approach had nicer scenery and better camping but worse scree low on the ridge. Everyone climbed well and brought excellent shared treats. Members: Alexander Ellis, Marge Huseman, Dalen Willhite, George Williamson. Nonmembers: Michael Morris, Richard Partridge.

Three Fingered Jack

August 24, 2014

Leader & Photographer: Brian Hamilton

Climb: 11 miles, 3,000 ft.

A **BATTALION OF MAZAMAS** left the Santiam Pass trailhead at 3:30 AM, followed by Obsidians at 4:30, and Chemeketans at 5:30. We caught up with the Mazamas and waited an hour for their leader to set a fixed rope over the Crawl. By then, the



Chemeketans had also reached the rope-up point. We fixed our own rope over the Crawl and proceeded to the bottom of the chimney. The Chemeketans followed on our rope and we all waited another two hours for the seven Mazamas to top out and come back down. To save time, we teamed up with the Chemeketans and used their rope up the chimney to the summit and our rope back across the Crawl. All of our group reached the summit on their first attempt of Three Fingered Jack on a beautiful, nearly windless day and made it back to the trailhead by 5:45 PM. Members: Rebecca Eastwood, Brian Hamilton, Shawn Prime, Jennifer Rogers. Nonmembers: Iryna Yavorska.



Fish Lake

June 21, 2014

Leader: Ellen Sather

Water: 1 miles, 0 ft. (Easy)

Kayak Trips



Backpacks

Blacklock Point

May 30, 2014

Leader: Scott Hovis

Photographer: Tommy Young

Backpack: 8 miles, 200 ft. (Moderate)

THE SOUTH COTTAGE GROVE EXIT IS STILL BEING WORKED ON. This was the construction that caused two-hour delays last Memorial Day. Trail maintenance is very good, including



some large tree removal. The snowy plover beach warning signs have been removed. I was surprised to see so few windsurfers at Floras Lake Saturday. The beach has very little trash on it—someone is doing a great job of removing most of it. The creeks in the area seem very low for this time of the year. Enjoy and never turn your back on the ocean! Members: Lisa Grissell, Scott Hovis, Nola Nelson, Jan Pylar, Tom Rundle, Tommy Young.

Trout Creek Mountains

June 13, 2014

Leader: Bill Sullivan

Backpack: 11 miles, 2,500 ft. (Difficult)

THIS MOUNTAIN RANGE IS SO REMOTE that most Oregonians have never heard of it. Maps sometimes call the portion we explored the Oregon Canyon Mountains. To get here, you drive two hours beyond Steens Mountain towards Utah. I led my 16th annual Salem Chemeketan/Eugene Obsidian joint backpack here while updating my guidebook, *100 Hikes in Eastern Oregon*. We found a treeless, upside-down mountain range, where you park at a high plateau and then hike downhill into a rugged canyon of rimrock pinnacles. We saw owls and beavers near our camp beside Whitehorse Creek—a creek that appears and disappears as you hike along the canyon. Our goal was Death Trap, an official place name for a slot canyon where cattle probably once died. It was less lethal now that fires and floods had reamed out the canyon and revived masses of wildflowers. On the drive back from our trailhead at Mud Spring, we blew one tire and nearly had to call a tow truck from Winnemucca or Burns (200 miles either way) before we managed to change it. Then we all stopped at Willow Creek Hot Springs for a desert soak before the long, long drive home. Members: Scott Hovis, Bill Sullivan. Nonmembers: John Halpern, Gary Jones, Sharon Wright, Nick Spoerke, Joanna Picchi, John Coyier, Ian Sullivan.



Byways By Bus

More Food III

June 18, 2014

Leader: Mary Ellen West

Photographer: Sharon Cutsforth

THE FOOD TRIP THIS YEAR INVOLVED FOOD, DRINK, AND FLOWERS (always a good combination). Our first stop was at the Camas Country Farm, where we gathered in the historic one-room Alvadore School House—recently moved to the farm property. This old school is being completely refurbished and will become an onsite education center. With former student names written on the interior walls, the antique ceiling fan, and other memorabilia, this was a perfect spot for our coffee break and a lesson in the history of the school and its students. Sue Hunton took us on a short tour of the nearby growing fields, showing us the differences in several varieties of wheat. We

then moved on to the actual mill where Stephanie Powers introduced us to the mill stone process. As of early this year, they have produced two million bags of flour since April 2011. Attached to the mill is their Camas Country retail store with a multitude of their products for sale. Of course, we did some shopping. We then drove on into Monroe for a tour of the *Hard Times Distillery* and a lesson on making flavored vodkas. Dudley Clark showed us the spirits producing process with names like *Sweet Baby Moonshine* and *Apple Shine* from Detering's apples. *Hard Times Distillery* was recently written up in the



Register-Guard as they have opened a tasting room in Eugene. We were allowed a private tasting at the distillery. Then it was up the road to Corvallis for lunch at the New Morning Bakery & Deli. This is always a favorite spot for good food and a beautiful display of fresh baked goods. After lunch, we visited the Lawrence Nursery on Starr Road just north of Monroe. This seasonal nursery is a small family-owned farm. The plants are grown on site and nurtured by Jeanne Lawrence and her son and daughter-in-law, Jack and Mary Lawrence. The bonus was seeing Mary's specialty of raising German Hunt Terriers (Jagdterrier) and Jack's collection of seven varieties of prize pigeons. Oh yes—several of us bought plants to take home for our gardens. Our final stop for the day was at the Harrisburg Dari Mart for locally made LochMeade ice cream. All in all, this was a lovely day for touring the countryside, learning about and sampling locally produced products. Members: Thomas Adamcyk, Ethel Allen, Bill Arthur, Barbara Beard, Paul Beard, Paula Beard, Mary Lee Cheadle, Sharon Cutsforth, Clara Emlen, Dennis Flanders, Mary Hawkes, Kess Hottle, Janet Jacobsen, John McManigal, Lenore McManigal, Rose Marie Moffitt, Barbara Payne, Don Payne, Virginia Prouty, Marian West, Mary Ellen West, Cristy White. Nonmembers: Margit Hollerud, Mindy Hollenbeck, Barbara Hottle, Judy Phelps, Jo Floyd, Pete Ferrero, Al Monce, Nita Monce.

Mount St. Helens

July 15, 2014

Leader: Sharon Cutsforth, Assistant: Bill Arthur

Photographer: Sharon Cutsforth

On the road again! Everyone was so prompt and well prepared that we left Shopko ahead of our scheduled 7:30 AM departure time. First stop was our coffee break at the Wilsonville rest area. First time riders were impressed. This is a lovely area with picnic tables under the towering fir trees. It was a nice

sunny day so we got glimpses of Mount Hood as we passed through the Portland area. As we started up the Spirit Lake Highway, developed areas soon gave way to young forests, mostly planted by Weyerhaeuser after the eruption. It was fun to spot the signs telling the year of planting. This is a beautiful drive; the areas of Noble Fir trees are especially lovely. We made three stops along the way: the Forest Learning Center, Johnston Ridge Observatory, and Hoffstadt Bluffs Visitor Center. Each of these buildings is an impressive structure built in the late 1990s and offers interesting educational information on the Mount St. Helens eruption and the forest recovery process.



They all overlook the north Toutle River valley and allow great views of Mount St. Helens. The Forest Learning Center focuses on the destruction of the forest, replanting, growth and harvesting of timber through pictures, videos and the written word. There are some lovely bronze sculptures on the grounds. Johnston Ridge Observatory is closest to the mountain and has two excellent videos about the force of the eruption and recovery of the immediate area. We learned that the current north Toutle River valley floor is now 150 feet higher than it was prior to the eruption. Here we were able to see part of Spirit Lake. Hoffstadt Bluffs Visitor Center is one of the largest post and beam structures on the west coast, truly a beautiful building. When we arrived at the Mill Village Motel in Eatonville for the night, we were delighted to see we had a beautiful view of Mt. Rainier right from the parking lot. After check-in, we all headed off to find some dinner. Several went to Bruno's next door to try their buffalo burgers, which were very good. Upon returning to the motel, many of us watched the sunset turn the snow on Mr. Rainier to pink—a lovely sight. Wednesday, we arrived at Northwest Trek Wildlife Park at opening. We were greeted by the admissions staff and guided down to the tram for the first tour of the day. We had an up close look at a family of caribou—it seemed they wanted to go on the tram tour as well. Our delightful tour guide, Angela, gave us an excellent and informative tour of the grounds, locating all the animals for us as we drove along. Along with the caribou, we saw bison, elk, mountain goats, bighorn sheep, deer, and lots of geese—some of which brought the tram to a stop until they decided to get off the road. Following the tram ride, people headed off in different directions to view the predatory animals, walk the nature trails, visit the gift shop, and find a spot for lunch. Early afternoon found us heading towards I-5 via back roads bordered by farms, ranches, and small communities. As we were passing through the land of

Alpacas of America, the bus decided to make an unscheduled stop so we could have a closer look at some of the 1,600 alpacas raised on this ranch. They were as curious about us as we were about them. Meanwhile, Jay, our driver, was busy making phone calls and receiving instructions and soon we were on our way again with no further incidents. As we were traveling along on this trip, we had great views of Mt. Hood, Mount St. Helens, Mt. Adams, and Mt. Rainier as well as several rivers. In spite of our extra stop, we arrived back at Shopko around 7:00 PM as anticipated. Great weather, great scenery, and a great group of people! Members: Thomas Adamcyk, Rick Ahrens, Bill Arthur, Barbara Beard, Paul Beard, Paula Beard, Mary Lee Cheadle, Sharon Cutsforth, Wendy Dame, Don Doerr, Clara Emlen, Rose Mary Etter, Dennis Flanders, Donna Halker, Marge Hislop, Janet Jacobsen, John Jacobsen, Ann Lichtenstein, Ed Lichtenstein, Craig Molitor, Margaret Prentice, Virginia Prouty, Cristy White. Nonmembers: Judy Adamcyk, Connie McIndoo, Judy Phelps, Lee Altschuler, Betty Dickerman, Joanna Molitor, Denise Wilson.



Bike Trips

Brownsville - Corvallis Loop

June 15, 2014

Leader: John Hegg

Bike: 51 miles, 200 ft. (Moderate)

WITH OVERCAST SKIES, a group of three Obsidian bicyclists met in the town of Brownsville and started a leisurely ride to Corvallis. We proceeded northwest through back country roads with little traffic, crossing over the Willamette River and headed over to the local bakery in Corvallis to replenish carbs. On the return ride, we swung more easterly, stopping at the Thompson Mill for a rest stop. Now a state heritage site, it is the oldest water powered mill in Oregon. After a brief tour inside the mill, we headed back, passing briefly under an isolated storm cloud, arriving in Brownsville on dry pavement. Members: John Hegg, Harold Thompson, Charlie Van Deusen.

Parvin Covered Bridge

July 4, 2014

Leader: Patricia Esch

Bike: 25 miles, 250 ft. (Moderate)

Ten riders met in Pleasant Hill for a leisurely ride on a beautiful day. We peddled past the back door to Mt. Pisgah making use of the facilities since Ray's Grocery has closed. Fields, homes, and shade trees entertained us on the way by Jasper Park and on past Elijah Bristow Park. Crossing Highway 58 was an exercise in patience. We enjoyed Dexter and the environs beyond to get to the covered bridge, where we stopped to chat and turn around. The route included a good view of Parvin Butte (shorter now) on the way to Elijah Bristow for lunch. Peddling back, we spotted the Oreo cows! The return ride to

Pleasant Hill seemed longer because it was definitely warmer and there was that namesake hill to go up to get back to the parking lot. Members: Anne Bonine, Patricia Esch, Kathy Hoeg, Jonathan Jost, Don Kindt, Lana Lindstrom, Jack O'Donnell, Joe Sanders, Lynn Stearney. Nonmembers: Richmond Cross.

Siuslaw Falls

July 18, 2014

Leader: Patricia Esch

Photographer: Darko Sojak

Bike: 24 miles, 200 ft. (Moderate)

IT WAS A COOLER THAN EXPECTED MORNING as we biked in and out of shade on our way to Siuslaw Falls with Darko stopping frequently and crouching beside the road to take pictures.



There was very little traffic except for a few of the ubiquitous logging trucks who slowed down politely. Going a little beyond the entrance to the falls to make the ride a little longer gave us a view of the hill that I did not want to go down, thinking of the return. We peddled back to Siuslaw Fall's entrance road and on to picnic tables under some trees for lunch which were still cool from the night. We explored the area to get a view of the falls and debated about the function of the cement spillway on the other side. No one elected to swing out over the pond on the tempting rope dangling from a tree. The return ride anticipated a visit to the Lorane Store and ice cream. Members: Anne Bonine, Barbara Bruns, Patricia Esch, Kitson Graham, Peter Graham, Kathy Hoeg, Stewart Hoeg, Jack O'Donnell, Darko Sojak, Michael Wolf. Nonmembers: Moshe Rapaport.



Hikes

Heceta Head/Hobbit Trail

June 8, 2014

Leader: Becky Lipton

Photographer: Holger Krentz

Hike: 6.7 miles, 400 ft. (Moderate)

EIGHT HAPPY HIKERS trekked up to the Heceta Head lighthouse. Everyone learned about the recent extensive reno-

vation of the lighthouse as we toured through it, led by State Park volunteers or staff. Then we hiked over the windy bluff and down the Hobbit Trail to the beach. The clouds were very low that day and condensing on the needles of trees around us. With the wind whipping the clouds through those tall trees so quickly, we experienced significant water dripping like rain from trees on the high point of the bluff. After fighting the wind up the beach to Washburne State Park, we opted to return to our starting point through the sheltered forest. Members: Jane



Allen, Holger Krentz, Becky Lipton, Judy Ness, Brian Popowsky, Tom Rundle, Mike Smith. Nonmembers: Jimmy Murphy.

Amazon Headwaters/Spencer Butte

June 18, 2014 through August 13, 2014

Leaders: Jorry Rolfe (June 18), Tom Rundle (July 16), Janet Jacobsen (all other dates)

Hike: 6.2 miles, 1,530 ft. (Moderate)

THE HIKERS BY DATE WERE: **June 18**—Members: David Cooper, Chris Gordon, Barbara Gunther, Craig Molitor, Jorry Rolfe, Tom Rundle, Mike Smith, Gary Spizizen. Nonmembers: Gary Ladenes, Janice Smith. **June 25**—Members: Jennifer Baer, Alan Curtis, May Fogg, Barbara Gunther, Janet Jacobsen, Jorry Rolfe, Tom Rundle, Gary Spizizen. Nonmembers: Caroline Moore, Carla Lyon. **July 2**—Members: David Cooper, May Fogg, Barbara Gunther, Janet Jacobsen, Sue Meyers, Craig Molitor, Jorry Rolfe, Mike Smith, Gary Spizizen, Tommy Young. Nonmembers: Caroline Moore. **July 9**—Members: Jennifer Baer, May Fogg, Barbara Gunther, Janet Jacobsen, Craig Molitor, Tom Rundle, Mike Smith, Gary Spizizen, Tommy Young. Nonmembers: Carla Lyon, Janice Smith. **July 16**—Members: David Cooper, Barbara Gunther, David Reinhard, Tom Rundle, Mike Smith. Nonmembers: Carla Lyon, Janice Smith. **July 23**—Members: Jennifer Baer, David Cooper, May Fogg, Chris Gordon, Barbara Gunther, Anna Hougardy, Christiane Hougardy, Janet Jacobsen, Craig Molitor, Tom Rundle, Mike Smith. Nonmembers: Caroline Moore. **July 30**—Members: Jennifer Baer, David Cooper, May Fogg, Barbara Gunther, Janet Jacobsen, Bob Johnson, Tom Rundle, Mike Smith, Gary Spizizen, Tommy Young. Nonmembers: Caroline Moore, Miriam Fults. **August 13**—Members: Rob Castleberry, David Cooper, Barbara Gunther, Janet Jacobsen, Bob Johnson, Craig Molitor, Mike Smith, Gary Spizizen. Nonmembers: Marilyn Odell, Caroline Moore.

Cascadia Cave Rock Shelter

June 20, 2014

Leader: Joella Ewing

Photographer: Tom Musselwhite

ExploraTalk: 2.5 miles, 200 ft. (Easy)

COYOTE, IN ALMOST ALL NATIVE AMERICAN LEGENDS, refers not to the physical animal, but to the deity or life force in and around everything. This we learned from our USFS guide, who led us from Cascadia State Park on Highway 20 to Cascadia Cave Rock Shelter. A USFS archaeologist, Tony Farque, stopped several times along the South Santiam River trail to point out and tell stories about the various trees and water features along the way. Upon arriving at the rock shelter, he gave us a printout showing more clearly the petroglyphs he pointed out along the walls, of what is reputed to be the largest collection west of the Cascades. We ate our lunches in the shadow of this sacred place, where we were permitted to look but not touch. After lunch, Tony gave us the fascinating theoretical history and meanings of the cave and the writing on the wall proposed by various archaeologists. The fresh eyes of a nine-year-old Indian girl finally saw the huge outline of a salmon not etched, but shaped by nature into the wall upon which the small



drawings were etched. Tony finished with a series of legends leading up to the final, and presumably correct meaning of the cave. We learned that petroglyphs with the same basic seven symbols, including hatch marks, circles, triangles, and wavy lines are found in caves in Africa, Australia and Europe, as well as North and South America, some as old as 77,000 years, with no cross-pollination. This particular cave rock shelter is carbon dated at 11,500 years old. Thirty-five hikers, Tony's maximum number, participated in this hike. Members: Mari Baldwin, Keiko Bryan, Rob Castleberry, Roberta Chord, David Cooper, Chyanne Edwards, Clara Emlen, Joella Ewing, Bea Fontana, Kitson Graham, Peter Graham, Jennifer Haynes, Anne Hollander, Ken Kodama, Mary Livingston, Lou Maenz, Helen Martz, Tom Musselwhite, Judy Ness, Effie Neth, Jorry Rolfe, Karen Sieradski, Randall Sinnott, Chris Steele, Guy Strahon, Jeanine Taylor, Judy Terry. Nonmembers: Steve Cordon, Allan Sieradski, Nancy Raymond, Barbara Dumesnil, Pam McLellan, Marjorie Mountainsong, Daishin Sieradski, Mina Sieradski.

Mt. Pisgah Sunset/Moonrise

June 21, 2014

Leader: Janet Jacobsen

Photographer: Gary Haliski

Hike: 3 miles, 1,000 ft. (Moderate)

WEDDING MUSIC FROM THE WHITE OAK PAVILION serenaded us at the beginning and end of our solstice hike. On top, a group celebrating a birthday shared brownies with us. It was a festive atmosphere to watch the sunrises shine through the slots on the Mt. Pisgah sighting pedestal. Enthusiastic



photographers, Cindy, Holger, Gary Haliski and others captured the celestial events. It was so pleasant to enjoy the afterglow, but reluctantly we started down. Back at the parking lot, we watched the wedding couple drive out of the parking lot with the containers on the back of the car ringing and banging away amidst cheers from the guests. Members: Rick Ahrens, Anne Hollander, Christiane Hougardy, Mark Hougardy, Janet Jacobsen, John Jacobsen, Holger Krentz, Dave Predeek, Cindy Rust, Jim Whitfield. Nonmembers: John Hale, Gary Haliski, Jennifer Haliski, Becky Howard, Dani Amtmann.

Three Mile Lake

June 22, 2014

Leader: Scott Hovis

Photographer: Darko Sojak

Hike: 8 miles, 200 ft. (Moderate)

MOST FOLKS USE THE TAHKENITCH CAMPGROUND TRAILHEAD to get to Three Mile Lake. I prefer to drive past it five or so miles and turn right on Sparrow Park road. The dirt road is bumpy in places, but if you go two to three miles, you'll find



the trailhead that has new signs up to mark the beginning of the trail. The hobbit trail that takes you from the dunes to the middle of Three Mile Lake has had someone remove the overgrown branches. The beaches are pleasantly plastic-free for the most part. Wind was coming out of the north as usual. We saw snowy plover warning signs about nesting, requiring that you walk on the wet part of the beach. There was little moisture in the dunes and walking was hard in the sand. Raccoons were doing a lot of digging in the sand—are they looking for truffles? The lake is low, already splitting in half like it does every summer. NEVER turn your back on the ocean. Members: Keiko Bryan, Scott Hovis, Holger Krentz, Brian Popowsky, Tom Rundle, Darko Sojak, Tommy Young. Nonmembers: John Halpern.

Browder Ridge

June 22, 2014

Leader: Tom Giesen

Photographer: Chris Stockdale

Hike: 8.4 miles, 2,200 ft. (Difficult)

ELEVEN OF US MADE THE TRIP to the trailhead for Browder Ridge and there were some cars there when we arrived. Apparently, the word is out that Browder Ridge is an excellent, less



crowded hike than Iron Mountain, which is just across Highway 20 to the northwest. We had a bit of excitement driving up. Becky Lipton was in the center seat in the back of a brand new RAV4 when she felt her seatbelt harness tighten. The seatbelt continued to tighten, then tighten even more. Becky released the seatbelt and then connected it anew hoping it would not repeat the attack. She had maybe thirty seconds before the seatbelt assembly began to squeeze her again, feeling perhaps like the automatic securing straps in an electric chair. I was in the other car, and we got a frantic cell call from Becky. We stopped and we took poor Becky in our car. Fortunately, no one else's seatbelt behaved maliciously. Thereafter, Becky claimed the front right car seat for the rest of the day in order to escape easily if the need arose. The climb for the first 1.7 miles is difficult: It is, per Sullivan's new book, 1,150 feet. We rested at the first overlook and then pressed on. We were a week or two early. As we passed the last junction, there was snow in heavily shaded areas and the flowers such as trillium were early season. It was a clear day and an excellent day for the broad views at the top. Members: Mari Baldwin, Rob Boese, Tom Giesen, Kitson Graham, Peter Graham, Jennifer Haynes, Becky Lipton,

Lynn Meacham, Nola Nelson, Chris Stockdale. Nonmembers: Mary Lou Radice.

Iron Mountain

June 26, 2014

Leader: Marianne Camp

Hike: 8 miles, 1,800 ft. (Moderate)

THE WEATHER REPORT FOR THE DAY indicated rain and that's just what happened to our group of six hikers. We were a hardy group with no complaints. The wildflowers were abundant and the pleasant temperatures made hiking easier than a hot sunny day. We pretty much had the trail to ourselves and once on top at the lookout platform, the sun and blue skies appeared for a chance to finish our lunch without the rain. The rain returned and we arrived back at the car soaked but happy. Members: Marianne Camp, Chris Gordon, Jennifer Haynes, Tom Rundle, Dan Udovic. Nonmembers: Jade Isa.

Sweet Creek-AlphaBit Cafe

June 27, 2014

Leader: Joella Ewing

Photographer: Tom Musselwhite

Hike: 3 miles, 350 ft. (Easy)

ONLY FOUR OF US HIKED SWEET CREEK FALLS on a rainy Friday, but our return attests to our not being too sweet to melt. Following the walk, we went to the fixed-menu, fixed-price Friday dinner at Alpha-Bit. Great friendships can be made on Obsidian trips, and the delightful Peggy Wacks from Massachusetts, who was here for three weeks visiting her son, will



become an occasional Obsidian on her future trips here. Peggy is so taken with all the beauty that is Oregon. Members: Clara Emlen, Joella Ewing, Tom Musselwhite. Nonmembers: Peggy Wacks.

Iron Mountain

June 28, 2014

Leader: Becky Lipton

Hike: 8 miles, 1,800 ft. (Moderate)

SIX EAGER HIKERS enjoyed the lovely and varied wildflower hike and views from the old fire lookout location at the top of Iron Mountain. Low clouds moving through the mountains created extra drama in the views. Members: David Cooper, Becky

Lipton, Nola Nelson, David Reinhard, Nancy Whitfield. Nonmembers: Kim Davidson-Ruby.

Macduff Mountain

June 28, 2014

Leader: Janet Jacobsen

Photographer: Darko Sojak

Hike: 4.5 miles, 1,260 ft. (Moderate)

OUR THIRD ANNIVERSARY June 28 hike up Macduff Mountain was much shorter and damper than the hike Florence Ogden Sims described of her hike on June 28, 1931: She wrote *It was 9 long, steep, hot miles up MacDuff Mt. and I mean up. 8 girls and 16 men comprised the group. Mr. Taylor of the Forest Service rode his horse and they furnished a pack horse to carry the Bronze Plaque and tools to mount it. About half way up we all*



*were tired and hungry. Someone brought up the subject, food for lunch. I made the remark my lunch contained real wild black berry pie. Mr. Taylor overheard and he said he 'would let anyone ride his horse for a piece of black berry pie'. The trade was made. After riding about a half mile, I gave up the horse to another girl. From then on all the girls had a ride except Margaret Thompson. It was her last qualifying hike. She stepped every foot of those long miles. A picture is worth a thousand words! Check out the *Members Only* photo album to see the steep one-lane road and then hikers eating blackberry brownies on top. For directions on how to get to Macduff, see the trip report in the July, 2012 *Bulletin*. Members: Barbara Aten, May Fogg, Chris Gordon, Janet Jacobsen, Steven Johnson, Holger Krentz, Tom Rundle, Mike Smith, Darko Sojak. Nonmembers: Karen Rich.*

Crescent Mountain

June 29, 2014

Leader: Randall Sinnott

Photographer: Mike Smith

Hike: 8.6 miles, 2,200 ft. (Moderate)

AN EXCELLENT DAY FOR A HIKE. All hikers were on time for an 8:00 AM start. At the trailhead, the temps were nearing 60 degrees with mostly sunny skies. We hiked up pleasant Maude Creek just over a mile before the trail began to climb. Several switchbacks led into meadows of wildflowers almost to the top of Iron Mountain. There were no crowds. The trail was free of snow, the clouds were dissipating, and the range of peaks visible included Diamond, The Sisters, Washington, Three Fingered Jack, and the heavily snow-mantled pinnacle of Jefferson. The summit afforded 360-degree views of central Oregon and



the heart of many Obsidian adventures. We lunched for an hour, took in the panorama and began a leisurely return hike. This trail is a gem that offers a clear creek supporting a population of small trout, unlogged conifer stands with open understory, flower-rich meadows and spectacular views. Members: Mari Baldwin, Lisa Grissell, Janet Jacobsen, Jorry Rolfe, Tom Rundle, Randall Sinnott, Mike Smith, Gary Spizizen. Nonmembers: Janel Erickson.

Obsidian Loop

July 4, 2014

Leader: Betty Grant

Hike: 12 miles, 1,800 ft. (Difficult)

LITTLE BELKNAP CRATER was substituted for the Obsidian Trail just thirty-six hours before the hike when the trip leader scouted the first three miles of the hike and saw there was still significant snow on the trail. Six willing participants instead enjoyed a trek up to Little Belknop in perfect weather with a nice breeze for clear views from Mt. Jefferson in the north, Three Fingered Jack, Mt. Washington, North and Middle Sister, Husband, and all the way to Diamond Peak. Even Broken Top was peeking around the east side of North Sister. Quite spectacular indeed! Members: David Cooper, Chris Gordon, Betty Grant, Christiane Hougardy, Mark Hougardy, Daphne James.

Lowder Mountain

July 5, 2014

Leader: Judy Terry

Photographer: Darko Sojak

Hike: 5.6 miles, 900 ft. (Moderate)

PERFECT WEATHER FOR A HIKE UP LOWDER MOUNTAIN. Some of the nice things about this trail are the facts that it moves in and out of sunny-shady areas, and it alternates from level trail to switchbacks a few times. It is never a total exposure, or a hot trudge to the top. Numerous varieties of flowers were present in small groupings. Although hikers were warned of possible mosquitoes, there was no threat from those pests! At the top, we were thrilled to see a very clear view of the Cascade range—Mt. Hood and the entire lineup south to Diamond Peak. We were also fortunate to get a brief description of the geological formation of the Lowder Mountain basin by Tom Rundle. Thanks, Tom. Members: Anne Bonine, Brian Popowsky, Jorry



Rolfe, Tom Rundle, Carolyn Sojak, Darko Sojak, Guy Strahon, Judy Terry, Nancy Whitfield. Nonmembers: Steve Cordon, Robert Crook, Camilla Rice.

Matthieu Lakes

July 6, 2014

Leader & Photographer: Betty Grant

Hike: 6 miles, 800 ft. (Moderate)

SNOW CONDITIONS WERE NOT CERTAIN even on the morning of the hike, so we all went with the knowledge it may be only an out and back hike, going as far as it seemed safe and reasonable in the snow. The stretch to North Matthieu Lake was thought to be snow-free, so off we went in that direction. We found it essentially snow-free, but unfortunately not bug-free. Layers of bug juice slowed the ravenous mosquitoes just



enough to keep walking, but not enough to stop and enjoy the beauty of North Matthieu Lake, which we passed by with only a brief respite. As we climbed to South Matthieu Lake, the mosquitoes thankfully stayed behind. A leisurely lakeside lunch was enjoyed by all with North Sister close by to the south. Four hardy (or is that foolish?) souls enjoyed a swim in the lake—Kay Cosby, Jan Pylar, first-time Obsidian hiker Avie Crombie, and Betty Grant. The water was amazingly warm in this pristine alpine lake. Just before we slung back on our packs, Tom Rundle encouraged us to join him for an unobstructed view of Yapoah Crater on the side of North Sister and

we were treated to a short lesson on volcanic history. Very interesting—thank you, Tom! Back on the trail, we headed south along an open volcanic slope. When we crested the first ridge, there was Mt. Washington and Three Fingered Jack. A few more steps brought Mt. Jefferson into view and finally, just a bit further, we could see all the way to Mt. Hood. What a wonderful, sunny, mosquito-free afternoon treat! The gentle downhill slope back to the parking lot required only a few steps across the fast-melting final remnants of snow, enabling us to finish the full circle hike without any difficulty. Members: Carla Cooper, David Cooper, Chris Gordon, Betty Grant, Lana Lindstrom, Jan Pylar, David Reinhard, Tom Rundle. Nonmembers: Barbara Kay Cosby, Gary Haliski, Avi Crombie.

French Pete Creek

July 11, 2014

Leader: Don Colgan

Photographer: Gary Haliski

Hike: 8 miles, 1,000 ft. (Moderate)

WHAT HAD THREATENED TO BECOME AN UNCOMFORTABLY HOT DAY stayed very tolerable. Six of us drove up to the trailhead in two cars. The hike itself was a lot of fun. We ended up with a total round trip of about eight miles. The four river crossings (two each way) went very well—everyone forded the



medium-sized stream without incident, and there were even some logs available for those with a keen sense of balance. The French Pete trail winds through a fabulous stand of old growth preserved about thirty-five years ago as part of the Three Sisters Wilderness. What I liked about today's hike was the degree to which we walked in relative silence in order to enjoy the majesty of this forest. Members: Marianne Camp, Don Colgan, Steven Johnson, Tom Rundle, Dan Udovic. Nonmembers: Gary Haliski.

Eugene Skinner Walk

July 11, 2014

Leader: Richard Essenberg, Ass't: Janet Jacobsen

Hike: 4 miles, 250 ft. (Easy)

THIS PRE-RUN FOR THE UPCOMING SYMPHONY GUILD VERSION of our downtown art, architecture and history walk took place on a lovely morning. We chose to run it backwards because of the Oregon Country Fair making the area of the downtown bus station a bit crowded, which caused some of our explanations,

now going in reverse order, not to work as well as in the usual order. But a good time was had by all. Members: Margaret Essenberg, Richard Essenberg, May Fogg, Janet Jacobsen, Mike Smith, Tommy Young. Nonmembers: Janel Erickson, Carla Lyon, Janice Smith, Michelle Wood, Nancy DeBoarck.

Middle Pyramid

July 12, 2014

Leader: David Adkins

Photographer: Holger Krentz

Hike: 6 miles, 1,800 ft. (Moderate)

THE WEATHER CALLED FOR HOT TEMPERATURES, with chance of showers or thunderstorms. Fortunately, the weather was dry, with just a few cumulus clouds building over the Cascade crest. The hike had a handful of fallen tree crossings. Each hiker was faced with the decision of which way was it easier to get around the obstacle—to go over, under or around. There were some mosquitoes, but not nearly as bad as mid-summer hikes in the high Cascades. The wildflowers were in good form this year, both in the forest and the rocky clearings.



As mentioned above, it was warm, which added to the challenge of the 1,800 foot elevation gain, but all summited. On the top, the party enjoyed the sweeping views of the Cascades—from Diamond Peak in the south to Mount Adams in the north, and to the west, the Coast Range. One of our participants gave a very informative talk on the local geology and volcanology. The hike down was enjoyable with great views of the surrounding county in the clearings. The group broke up the drive home for ice cream or treats at the McKenzie Bridge Blue Sky Market. Upon returning to the city, thunderclouds were building over the Cascades. I thought to myself, what great timing for such a great hike. Members: David Adkins, Jennifer Baer, Marianne Camp, Rebecca Eastwood, Holger Krentz, David Reinhard, Tom Rundle, Nancy Whitfield.

Mt. Pisgah Sunset/Moonrise

July 12, 2014

Leader: Janet Jacobsen

Photographer: Darko Sojak

Hike: 3 miles, 1,000 ft. (Moderate)

WE CELEBRATED THE SUNSET with blackberry brownies and then waited for the Super Moon to show its face through the



clouds. Holger was the first to spot the red rim and photographers went to work. Our encounter was brief as the moon quickly disappeared behind the clouds. Join us for the next super moons, September 8 and October 9. Members: David Cooper, Anna Hougardy, Christiane Hougardy, Mark Hougardy, Janet Jacobsen, Holger Krentz, Lana Lindstrom, Darko Sojak.

Opal Creek

July 26, 2014

Leader: Becky Lipton

Photographer: Holger Krentz

Hike: 10 miles, 500 ft. (Difficult)

SIX ADVENTUROUS HIKERS enjoyed exploring and photographing numerous aspects of the rushing Opal Creek trail, including rusting machinery and vehicles from a 1930s era



sawmill and mining industry, as well as Jawbone Flats, with well-preserved buildings of a 1930s mining town, which is now an old-growth forest research center. We also enjoyed waterfalls, dramatic cliffs, a scenic gorge, turquoise pools, and several ancient 500 to 1,000-year-old red cedars where tree-sitters resisted logging efforts in the late twentieth century. Members: Rob Boese, Chris Gordon, Holger Krentz, Becky Lipton. Nonmembers: Marissa Athens, Sharon Smith.

Jefferson Park

July 26, 2014

Leader & Photographer: Randall Sinnott

Hike: 10.2 miles, 1,800 ft. (Difficult)



AN EXCELLENT DAY TO BE IN THE WILDERNESS. We began at Whitewater trailhead just before 10:00 AM. The weather was mild, 55 degrees at the start and sunny. No smoke was visible from area fires that had been in the news recently. The air was pristine judging from the crystal clear views of Mt. Jefferson that soon came into view and continued along the near-level trail that hugs Sentinel Ridge. Wildflowers were less showy than two weeks earlier, but still a welcome addition to the rocky clearings above and below the trail. We saw fewer hikers and campers than the number of cars at the trailhead would suggest, and I suspect they dispersed throughout the sizable acreage of the park. Several campers we passed were families with young children. No parties of climbers were visible on Jefferson's northernmost glacier. Some trails were visible on the high snowfields. After an hour on the shoreline of Russell Lake, where one of our more adventurous hikers took a dip, we started out. By our arrival at the trailhead, the temperatures had climbed to 85 degrees. Insects were not a problem. Members: Brad Bennett, Jonathan Jost, Jorry Rolfe, Tom Rundle, Randall Sinnott, Mike Smith. Nonmembers: Benjamin Pellegroni.

Baker Beach

July 27, 2014

Leader: Scott Hovis

Hike: 7.3 miles, 100 ft. (Moderate)

SEVEN PARTICIPANTS ESCAPED THE HEAT OF EUGENE for a gorgeous day at the coast. We left one car at the North Jetty, the southern terminus of our hike, and shuttled north to the Baker Beach parking lot. The first segment from the parking lot across the dunes is frequented by many equestrians who leave evidence along the way that we stepped around and over reaching the beach. Winds from the north took us along at a brisk pace and carved out fascinating shapes in the sand. The bright blue sky was dotted with thin fluffy clouds. Signage indicated protected snowy plover nesting grounds about midway through the hike but we didn't see any of the birds. We encountered one shallow stream crossing along the way, and

Dick led us along it and around dunes to a lunch spot shielded from direct wind. We ate a leisurely lunch after which several of us sought bladder relief—not so easy for the women due to the absence of trees or grasses rising to any significant height. The dunes are stabilized by picturesque grasses which waved rhythmically with the winds. As the jetty came into view, fog appeared on the beach providing an interesting contrast to the bright sunshine we'd experienced up until then. Huge piles of driftwood were thrown onto one segment of the jetty, kites from five kite surfers were blowing just beyond the south jetty, and several people and dogs were out enjoying the day. We stopped at Alpha Bits for a bit of socializing before heading back to Eugene. A special thanks to Jan Pylar for being my ghost writer. Members: May Fogg, Dick Hildreth, Yuan Hopkins, Scott Hovis, Jan Pylar, Tom Rundle, Diane Schechter.

Obsidian Loop

July 28, 2014

Leader: Betty Grant

Hike: 12 miles, 1,800 ft. (Difficult)

A GREAT GROUP OF EIGHT HIKERS, a beautiful sunny day and a gorgeous trip. We were seven Obsidian members and one first-time Obsidian hiker. Although the Obsidian Trail is optimal for wildflowers in mid-August into September, it is still a great trip in late July. Bear grass with its tall stance and sweet scent welcomed us through the first stretch of trail from parking lot to lava flow. As we reached the first rise on the lava flow, North and Middle Sisters delighted and beckoned us on. The crossing of White Branch Creek was perfect for drenching hats and shirts for a cool-down. The two mile stretch of trail going forward toward Obsidian Falls pops in and out of the woods, skirts meadows, and crosses creeks. Lupine, Indian paintbrush, a bit of penstemon and splashes of yellow flowers paved our way. We surveyed trail restoration work from Todd Larsen's Obsidian crew of a year ago, appreciating how the land was filling back in, quickly in some places, more slowly in others. We viewed the falls and climbed just beyond to the source in the alpine meadow, its meandering creek emerging from cliffs below the Sisters. Here we took a well-deserved lunch break with time to explore the origins of the creek seeping out from rock cliffs and snow and bubbling up from small pools. From this meadow, we continued south on the PCT with obsidian glass glittering under our feet, and emerged beyond the cliffs to a return of North and Middle Sisters, this time almost close enough to reach out and touch. Then to follow was a clear view south to Mt. Washington, a bit of Three Fingerted Jack, Mt. Jefferson and way off in the distance, Mt. Hood. Amazing! We momentarily passed beyond our return trail to view Sunshine Meadow (alas without its glorious show of flowers) and confirmed that a new trail restoration sign had been put up the day before by Todd Larson and forest ranger Dylan to close the shortcut trail which bisected the meadow. Just a bit further on down the Glacier Creek trail, we admired Todd and Dylan's work again, where the two of them spent five hours cutting through a three to four foot in diameter tree crossing the trail and rolling the cut section off into the woods. We would have had quite a climb to get over this! Way to go guys!! From here it was back to White Branch Creek, up and over the lava flow, a final good-bye to the two Sisters, and back through the woods to the trailhead. Tired feet, thirsty bodies, happy spirits. Members: David Cooper, Chris Gordon, Betty Grant, Barbara Gunther, Jennifer Haynes, David Reinhard, Cindy Rust. Nonmembers: Jennifer Olsen.

Wassen Creek
August 8, 2014
Leader: Gordon Sayre
Photographer: Tom Musselwhite
Hike: 4 miles, 500 ft. (Difficult)

AS PART OF THE OBSIDIANS' CELEBRATION of the 50th anniversary of the Wilderness Act, I asked Oregon Wild staff member Chandra LeGue to lead a hike into the proposed Devil's Staircase Wilderness. This is the largest remaining contiguous tract of old-growth forest in the Oregon coast range, with almost 25,000 acres along both sides of Wassen Creek, between the Umpqua River and the Smith River. The BLM logging roads are poorly marked on maps, but the area is surprisingly easy to access from Eugene. We met at SEHS and drove via Wolf Creek Road to the Smith River Road and past the Vincent Creek recreation site. Only the last two miles or so are on gravel, a



densely overgrown but smooth route up to an unmarked trail head. Our group of thirteen included three kids and seven nonmembers, aged 11 to 74. The hike is short but very challenging. There are no developed trails or trailheads in this proposed wilderness, and Chandra led us on a very steep route just barely perceptible from use by elk, bear, and other hikers. Sturdy boots and long pants are strongly recommended, and wet weather would make travel much more difficult. Happily, we had a dry and cool day and all members of the party stepped carefully and stayed together. We hiked for a little more than four hours. The hike led to Wassen Creek and to the Dark Grove of remarkably large and old trees. The Devil's Staircase waterfall has been adopted as icon and namesake for the proposed wilderness, but it is farther from the roads and very difficult to reach. This area should be enjoyed holistically as a trail-less old growth area, where one can appreciate the density of the rainforest and all its processes of decomposition and resurrection. Thanks to Chandra LeGue for leading this trip. I hope to revisit the area with other Obsidians in the future. Members: Keiko Bryan, Tom Giesen, Gordon Sayre. Nonmembers: Joshua Sayre, Ardas Calhoun, Karen Rich, Liz Bohls, Phebe Lowell Bowditch, Andrew Sibley, Elizabeth Sibley-Bowditch, Melissa Aubin, Hannah Sayre.

Mt. Pisgah Sunset/Moonrise
August 10, 2014
Leader: Janet Jacobsen
Hike: 3 miles, 1,000 ft. (Moderate)

BEFORE I COLLECTED FEES AND SIGNATURES, thunder and lightning to the west quickly persuaded us to cancel the super moon hike. Disappointed, we quickly devoured blackberry brownies, posed for a photo, and then headed for home.

Obsidian Loop
August 10, 2014
Leader: Mike Smith
Hike: 12 miles, 1,800 ft. (Moderate)

WE COMPLETED THE OBSIDIAN LOOP TRAIL counterclockwise. Good trip, no incidents, great people, lunch at Obsidian Falls. A lot of interest was shown in the trail leaving to the east headed up into the Sisters. All cars (three) returned to SEHS at about the same time. Members: Jennifer Baer, May Fogg, Holger Krentz, Michael Moffitt, Ernst Schwintzer, Mike Smith, Jim Woodard, Tommy Young. Nonmembers: Janel Erickson.

Opie Dilldock
August 11, 2014
Leader: Steven Johnson
Photographer: Holger Krentz
Hike: 14 miles, 2,500 ft. (Difficult)

WE BEGAN HIKING AT THE OBSIDIAN TRAILHEAD with overcast skies and the threat of thunder showers later in the day. As the day progressed, the clouds broke up and the predicted thunderstorms never materialized giving us perfect hiking weather and spectacular views from our lunch spot on the Collier glacier terminal moraine. After lunch we continued on north and took another break at Mini Scott Springs, where we filled our water bottles with the very cold and clear water bubbling up from the spring. We also had a chance to talk to four PCT



hikers that had been hiking north from Mexico since April—many of us left some extra snacks for them before we headed on to Scotts trail. We then stopped at the trail junction for Four-In-One Cone and had a short discussion to decide if anyone had the energy to make the trip up to the top. Eventually ten of us decided to take the ten minute hike up to the summit and we were again rewarded with some of Oregon's best scenery. We finished our hike after eight hours and almost sixteen miles at the Obsidian trailhead, where Janet Jacobson had some homemade apple crisp waiting in a cooler for all of us. Thanks Janet. Members: Keiko Bryan, Marianne Camp, Chris Gordon, Lisa Grissell, Janet Jacobsen, John Jacobsen, Steven Johnson, Holger Krentz, Rich Romm, Tom Rundle, Jim Whitfield.

Middle Fork Willamette
August 14, 2014
Leader: Jim Duncan
Photographer: Carla Cooper
Hike: 8 miles, 500 ft. (Moderate)

OUR TRIP UP THE MIDDLE FORK TRAIL got off to a great start,

because everyone who originally signed up for the trip showed up, and ahead of our departure time! We drove past Oakridge



and Hills Creek Reservoir in light rain to our departure site, Sacandaga Campground on the Middle Fork of the Willamette River. Before hiking, we walked down to view Rigdon Meadows, an important site on the old Oregon Central Military Wagon Road. We hiked the first 1.2 miles on the track of the old road by which time the light rain had stopped; the trail then veers off to follow the river more closely. The Middle Fork Trail winds through giant Douglas firs and red cedars, and the forest canopy is dense. Our destination for lunch was Indigo Springs, but about a quarter of a mile before the springs, we found our path blocked by the ruins of the bridge over Indigo

Creek. An adjacent downed log across the stream was a possibility for crossing, but it looked perilous given the tremendous volume and speed of the water rushing down, with little margin for error. Discretion proved the better part of valor, so we declared victory and ate our lunch by the rushing stream. We returned to our cars by the same route.

Thanks to a very congenial group for helping make this a nice hike through the woods. Members: Carla Cooper, David Cooper, Jim Duncan, Sharon Duncan, May Fogg, Judy Garwood, Barbara Gunther, David Hawkins, Nola Nelson, Brian Popowsky, Tom Rundle, Nancy Whitfield.

Three Mile Lake

August 16, 2014

Leader: Jane Hackett

Photographer: Darko Sojak

Hike: 6 miles, 900 ft. (Moderate)

GREAT TRIP. PERFECT WEATHER, a little overcast on the hike out to the beach. No wind, and a good walking temperature. We stopped and had lunch just before re-crossing the dunes to pick up the trail at the north end of Three Mile Lake. The sun came out and the breeze picked up which kept us cool on the hike back to the top of the dunes. Three Mile Lake was full of water. Last time I was there, the north end was all meadow. We then had a great hike back to the cars. Lots of mushrooms starting to peek out. There were blue skies and a lot of huckleberries, fat and sweet to eat on the way. Members: Jane Hackett, Tom Rundle, Darko Sojak. Nonmembers: Terry Magness, Tom Magness.



Camp Bell Goes Well

Lana Lindstrom

NINETY-FOUR CAMPERS PARTICIPATED AT CAMP BELL in the Strawberry Mountain Wilderness area from August 1—6, 2014. We were based at Lake Creek Lodge, about 35 miles southeast of John Day. It was a lovely setting—the tents were very dispersed among the trees and a nearby stream cooled hot feet. About 25 people stayed in one of ten cabins. We had flush toilets, hot showers, and a lodge to hang out in when the storms rumbled through. The staff was very accommodating, transporting our gear when

we first arrived, having ice water and lemonade in the afternoon, and doing their best to prepare food for and serve hungry hikers.

The most popular hikes were High Lake and the ridge above it, Strawberry Mountain, and Strawberry Lake. Almost everyone descended down to High Lake, admiring the stunning lupines, monkey flowers, and paintbrush along the way. Several folks swam in the lake; others just relaxed. Many hiked up to the far ridge, where the crags of Rabbit Ears and Strawberry Mountain are very visible. A number

of folks were able to spot goats on the opposite rim, one group seeing 24 of them! An impressive sixty hikers walked to the top of 9,038 foot Strawberry Mountain. Most campers drove to Prairie City and then continued to Strawberry Lake, Falls and/or Slide Lake, many enjoying the relatively warm waters of Strawberry Lake.

Others hikes were the East Fork Canyon Creek Trail, Canyon Mountain Trail, Malheur River (key swap), Wildcat Basin (hard to find trail), Buckhorn Meadows Trail (much more strenuous than expected), Monument Rock, Little Strawberry Lake, and Arch Rock.

Hikes which did not quite pan out as expected included the North Fork Malheur River which was closed due to fires, Reynolds Creek (now an unmaintained trail) and Lake Creek. The latter trail had at least 110 downed trees in the first three miles which precipitated a song entitled *We can't see clearly now; the trail is gone*.

We were grateful that several of the hikes are described in detail in Bill Sullivan's book, although dismayed that a couple of them had a number of downed trees due to previous fires. Bill and his wife, Janell Sorensen, joined us for dinner one night and heard detailed updates about the trail conditions!

Most participants stopped at the Kam Wah Chung Museum before, during, or after Camp. Free docent-led tours are offered in the 1860s restored structure which has an abundance of interesting artifacts.

Thanks very much to all the drivers and to the leaders. The excursion leaders were:

Led four trips: Chris Stockdale

Led three hikes: Richard Essenberg, Scott Hovis, Janet Jacobsen, Laurie Marshall

Led two hikes: Jen Barnes, Matt Bell, Jane Hackett, Diane Jeffcott, Lana Lindstrom, Susan Wanser

Led one hike: Marjean Austin, Dan Christensen, Margaret Essenberg, Laurie Funkhouser, Betty Grant, Brenda Kameenui, Steve Olson, Dave Reinhard, Camilla Rice, Diane Schechter, Chris Shuraleff, Nancy Whitfield

The evening campfires included trip reports, a bona fide fire which was used by a dozen folks to create s'mores, and of course, the President's Tea. President Matt Bell, who had never attended camp before and therefore had no idea what to expect, was honored by a procession bearing laurels and a crown, several poems and songs (see inserts that follow) and many creative gifts. As part of the ritual, an organic necklace worn by many previous presidents was presented to him.

Thanks to all the enthusiastic, congenial, and flexible participants who made this an excellent camp.

Attending the 2014 camp were: Rick Ahrens, Charlie Ashmore, Barb Aten, Marjean Austin, Barbara Bakke, Cathy Barber, Jen Barnes, Betsy Bell, Mathew Bell, Oliver Bell, Anne Bonine, Keiko Bryan, Barbara Butzer, Pam Caples, Dan Christensen, Alan Curtis, Jacque Davis, Marlene

Drescher, Barbara Dumesnil, Larry Dunlap, Clara Emlen, Margaret Essenberg, Richard Essenberg, Joella Ewing, May Fogg, Bea Fontana, Laurie Funkhouser, Kathy Giesen, Chris Gordon, Kitson Graham, Peter Graham, Betty Grant, Steve Gunn, Jane Hackett, Betsy Halpern, David Hawkins, Mary Holbert, Yuan Hopkins, Scott Hovis, Richard Hughes, Janet Jacobsen, John Jacobsen, Diane Jeffcott, Brenda Kameenui, Holger Krentz, Ed Lichtenstein, Kathy Lindstrom, Lana Lindstrom, Mary Livingston, Frank Lulich, Patty MacAfee, Darlene Mancusso, Daphne Mantis, Laurie Marshall, Helen Martz, Diana Masarie, Verlean McCoy, Lynn Meacham, Sue Meyers, Colleen Milliman, Patty Morrow, Nola Nelson, Judy Newman, Steve Olson, Ken Parramore, Carol Petty, Margaret Prentice, Jan Pylar, Cheri Reinhard, Dave Reinhard, Peter Rial, Camilla Rice, Eleni Rice, Judy Riggs, Jorry Rolfe, Tom Rundle, Diane Schechter, Ed Shiman, Chris Shuraleff, Randy Sinnott, Darko Sojak, Pat Soussan, Chris Stockdale, Pam Swisher, Ron Swisher, Chuck Thomas, Greg Torland, Sam Tracer, Charlie Van Deusen, Susan Wanser, Denise Ward, Nancy White, Jim Whitfield, Nancy Whitfield, and Kris Wolters.



Summer Camp photo by Pat Soussan



Summer Camp photo by Chris Stockdale

THE HIKES THEY ARE A CHANGIN’

Come gather ‘round Obsidians
 From all over the land
 To pay our respects to Matt Bell our president.
 He’s strong and he’s handsome
 But more than that you’ll see
 He doesn’t mind swimming with us old ladies
 Matt, Betsy, and Oliver—oh what a family
 For the hikes they are a changing.
 He chases down late hikers, he clears trails for fun.
 He strips off his shirt for fun when he’s done.
 Us old dames like to see him when he goes for a run.
 His speed it is amazing
 His hiking in sandals, it can’t be outdone.
 For the hikes they are a changin’.

Written and sung by Marlene Drescher (guitar) and Barbara Dumesnil

THE ROCK FROM HELL

Now old Tom Rundle had quite a thrill
 When he spotted this rock on Strawberry Hill.
 He doesn’t know much of its complex history.
 For him it remains a subduction zone mystery.
 Here’s a rock from the bottom of the ocean,
 Uplifted by miles in a tectonic motion.
 It nearly sank to the center of the Earth.
 It was saved from that by a mountains birth.
 On the Faralon Plate it got squeezed and fried.
 It turned black and blue till it almost died.
 It kept moving up, through faults and sheers.
 Then it slept on the mountain for millions of years.
 With the rock, you’ll recall that Summer Camp scene.
 When we laughed and hiked through forests of green.
 You’ll think of the year we stayed at Camp Bell,
 With the help of this rock that went through hell.

Poem by Tom Rundle.

COOKHOUSE BELL IS RINGING

There is a president of our club
 And his name is Matthew Bell
 Here in pines and moonlight
 We have stories we can tell.

While the cookhouse bell was ringing
 In the woods of Lake Creek Camp
 Matthew Bell was all for bringing
 People to this forest sun.
 Our club’s an institution
 Matthew leads us as a young one
 He’s patient with us old folks
 And all our sophomore fun.

While the cookhouse bell was ringing
 We felt lucky he was ours
 We knew that we were bringing
 Matthew Bell to share the flowers.
 He joined our organization
 When he was but a lad
 He clears trails for recreation
 Cause that’s what makes him glad.

While the cookhouse bell is ringing
 Tis a great day in our life
 It’s a farewell we are singing
 Thankfully it’s not for life.
 And our little celebration
 Hopes for guidance from above
 May Matt’s soul find exultation
 In our great eternal love.

Tune: Chapel Bells are Ringing

Camp Lyrics: Brenda Kameenui

Final Rhythm syncs: Margaret Essenberg

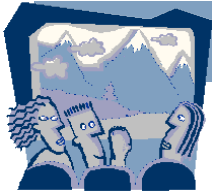
Singers: (sung by too many to recall)

*Frequent harmonious Bell Sound by 90 plus campers,
 directed by Chris Gordon*



Summer Camp Photo by Pat Soussan

At The Lodge



POTLUCK

Friday, September 26 at 6:30 PM

Two Wheels, Two Months, Two Worlds: Cycling in Cuba

WITH A DESIRE TO EXPERIENCE AN UNEDITED CUBA, Mike Wolf and his thirty-three year old daughter Kate set off in December 2011 on two wheels for a two month cycling adventure throughout the country.

Cycling through cities, villages and countryside—hiking and horseback riding in rainforests and backcountry—taking in cultural activities and leap-frogging portions of the country by bus—the end result was a sense of a unique world, lost in time, laced with miles and miles of beautiful landscapes, wonderful people and a vibrant, colorful culture.

From the outset, there were a variety of logistical snafus. As with virtually any travel experience, setting off on the sketched out plan and route was met by a need for continual adjustments on the fly.

While the evening's slide show and discussion will touch on the specifics of cycling and hiking, the emphasis will mainly be on experiences with the Cuban people, landscapes and culture.

Arrive a bit earlier than usual, around 6 PM, to enjoy a slide show of pictures from Summer Camp, organized by Laurie Funkhouser.



September Potluck
Friday, September 26, 2014
Social hour 6 PM, Potluck 6:30 PM, Program 7:30 PM
Obsidian Lodge

Bring your favorite potluck dish to share... along with plates, utensils and cups... plus \$1 to help cover club expenses.



ExploraTalk

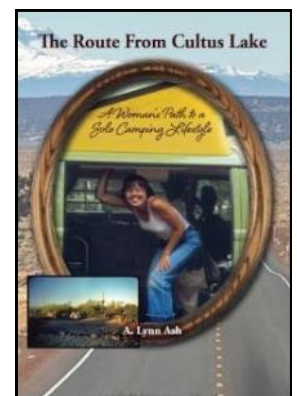
Tuesday, September 16 at 7 PM

A Woman's Path to a Solo Camping Lifestyle

WHAT WOULD MAKE SOMEONE QUIT HER JOB as a city planner in California and set off on a year-long camping journey around the U.S. and Canada? You can find out at the Tuesday, Sept. 16, ExploraTalk at the Lodge at 7 PM.

Lynn Ash, a geographer, birdwatcher and writer, will discuss her first solo adventure—rushing off to meet Edward Abbey, her idol—and her first solo camping trip to Organ Pipe National Monument. In addition to her year-long trip, she will also give an account of her childhood family camping and how her love of camping was rekindled in college.

Lynn will have copies of her book *The Route from Cultus Lake* on hand if you would like to purchase one for \$15.



Upcoming



Bus Trips

Fall Color in the Cascades

October 8, 2014

Leaders: Bill Arthur, Paul and Barbara Beard

Cost: \$45 (\$47 nonmembers) Mary Lee Cheadle, 689-1055

OVER THE RIVERS AND THROUGH THE MOUNTAINS to Sisters we will travel. The back roads to Highway 34 and Highway 20 will be vivid with color and the waters of the falls and streams crystal clear. Coffee break will be at the Calapooia State Park. Our destination, Sisters, will find us shopping and dining and walking the city sidewalks. So fill your purses and wallets with money as there will be plenty of quaint shops and cafes and trinkets for all. Come along with your fellow Obsidians and friends, join in the fun—relax on the luxury coach line and leave the driving to the driver of MTR. Loading the bus at 7:40 AM at Shopko parking lot, driving away at 8 AM. We invite you all to come share a day of pleasing sites, great fellowship and of course, good food. Bring your camera and good walking shoes. We will make some great stops along our route over the mountains and back home. Looking forward to hosting you on a beautiful day of color.

Christmas Lights at River Forks Park

Date: December 2 (Tuesday)

Leader: Verna Kocken

Cost: \$57 (\$59 nonmembers) Liz Reanier 687-1925

Welcome New Members

Butzer, Barbara
32441 W Saginaw Road
Cottage Grove, OR 97424
942-2401
bbutzer0520@gmail.com

Cordon, Steve
6794 E Street
Springfield, OR 97478
513-3452
cordon6794@msn.com

Dumesnil, Barbara
2355 Washington Street
Eugene, OR 97405
342-8127
barbaradumesnil@gmail.com

Erickson, Janel
1622 W Broadway Avenue
Eugene, OR 97402
505-6789
janelbetherickson@gmail.com

Haliski, Gary
4564 Altura Street
Eugene, OR 97404
337-1311
haliskig@hotmail.com

Partridge, Richard
1315 W 18th Avenue #4
Eugene, OR 97402

253-229-8107
partridge2spork@yahoo.com

Phelps, Judy
2774 Viewmont Avenue
Springfield, OR 97477
726-0118
judyph2007@msn.com

Rice, Camilla
PO Box 5155
Eugene, OR 97405
556-3591
csrice2@gmail.com

Rice, Eleni
PO Box 5155
Eugene, OR 97405
556-3568
erice105@gmail.com

Riggs, Judy
2904 NW Angelica Drive
Corvallis, OR 97330
757-1889
riggsj@exchangenet.net

Smith, Janice
469 Covey Lane
Eugene, OR 97401
520-460-2116
jssqjssq@gmail.com

Obsidian Calendar

September

8 Mon Mt. Pisgah Sunset-Moonrise Hike Jacobsen	343-8030
10 Wed Spencer Butte Hike E Jacobsen	343-8030
11 Thu Oregon History Bus West	343-5492
13 Sat Broken Top Climb M Hansen	360-852-2041
13 Sat Jefferson Park & PCT Hike D Lipton	736-7498
14 Sun Horse Pasture Hike M Hackett	953-7046
19 Fri Hidden Lake (Waldo) Backpack D Hovis	731-3412
20 Sat Mt. Hubris Climb Reiter	521-8472
21 Sun Fuji Mtn Loop Hike D Wilken	343-3080
21 Sun Gwynn Creek/Cooks Ridge Hike M Sojak	525-1124
25 Thu Mt. Whitney Climb Polhemus	242-3682
25 Thu Clear Lake Hike Duncan	343-8079
26 Fri Bicycling in Cuba	Potluck
27 Sat Spencer Butte Trl Mnt M Bell	503-884-8829
27 Sat Three Fingered Jack Climb Willhite	406-570-4514
27 Sat SOLV Beach Cleanup Hike E Ewing	344-9197
28 Sun Mt. Ray Loop Hike D Anselmo	782-2369

October

3 Fri South Waldo Shelter Bk Pk M Hovis	731-3412
4 Sat Detering Orchard Bike M Esch	338-8280
8 Wed Fall Color Bus Arthur	995-8294
19 Sun The Twins Hike M Miller	484-4586
19 Sun McKenzie View Bike M Strahon	221-7730
24 Fri Great Rift Valley	Potluck
25 Sat Spencer Butte Trail Trl Mnt M Bell	503-884-8829
25 Sat Silver Falls Hike M Lipton	736-7498

November

9 Sun Eel Creek Hike M	Hackett 953-7046
14 Fri Hiking San Juan Islands	Potluck
29 Sat Spencer Butte Trail Trl Mnt M Bell	503-884-8829

Obsidian Awards

CLIMB, TRIP, AND LEADER AWARDS will be presented at the Annual Meeting, Friday, October 10. To find your activity totals go to the Obsidian webpage and log in. Click on the tab *Trip Reports*. Then choose *Trip Summary* to view the totals. Lenore McManigal, club historian, and Janet Jacobsen will be checking the handwritten logs and online records, and will contact those who will receive an award. If you have any questions, contact Janet Jacobsen at bjjacobsen@comcast.net



OBSIDIANS, INC. OBSIDIANS, INC. IS A NON-PROFIT ORGANIZATION
P.O. BOX 51510
EUGENE, OR 97405

RETURN SERVICE REQUESTED

PRESORTED STANDARD
US POSTAGE
PAID
EUGENE, OR
PERMIT 803



September 2014



Photo of Trout Creek Mountains by Bill Sullivan—See trip report on page 9.