

Inside This Issue

Spencer Butte Construction	1
Car Break-ins	1
Obituaries	2
Member Spotlight	3
Board Notes	4
Trip Reports	5-11
Upcoming	12-13
Trail Mix Recipe	13
Potluck	14
ExploraTalk	14
Trips Needed	15
Welcome New Members	15
In the News	15
Calendar	15
Picture of the Month	16

Dates to Remember

May 15	Potluck
May 19	ExploraTalk
May 30	Bulletin deadline
June 3	Board Meeting

Complete current schedules at:

www.obsidians.org or

Register-Guard – Outdoors – Tuesday

Spencer Butte Summit Trail Construction

Janet Jacobsen



FROM THE WEST SIDE OF MT. BALDY the Wednesday Spencer Butte hikers watched a helicopter drop one ‘bag’ of construction materials (probably rocks and gravel) near the top of the Butte and then fly lower down to pick up a new load. The previous Sunday, on Darko Sojak’s Spencer Butte hike, we saw many of those bags filled with rocks near the reroute construction areas. The helicopter is certainly a faster and more efficient way to move the materi-

als instead of the motorized wheelbarrows we use on Obsidians trail maintenance projects. Those wheelbarrows could not have scrambled over the rocks.

An hour or so later with helicopter noise above us, a person on duty at the *Closed* sign at the Fox Hollow trailhead gave us a trail construction brochure. One sentence spoke to why I think the reroute project is so important: *The new trail is designed to blend into the natural aesthetic of the Butte and protect the natural value of this beautiful place.*

We have noticed for several years that the summit of Spencer Butte has been rapidly deteriorating due to high use. Without a clear trail to the top, hikers have damaged vegetation and created erosion issues. The new 1,460-foot trail on a stable trail bed will be able to endure heavy use and protect the ecosystem. It will also be safer for hikers. I have seen even the most capable hikers take a fall coming downhill on the rock scramble.

The Wednesday hikers miss our usual route to the summit but we know it is worth a bit of disappointment to see that Spencer Butte continues to be a spectacular hike for years to come.

Editors note: For info on closures, see www.eugene-or.gov/spencerbutte To compare 1900 and 2009 photos of Spencer Butte, see page five of the June 2009 Bulletin.

Car Break-Ins

Janet Jacobsen



AT THE MARCH 28 SPENCER BUTTE TRAIL MAINTENANCE, Clara Emlen was sweeping the paved steps and visited with a senior patrol officer monitoring the parking lot, noting cars with visible items that might encourage car break-ins. A week or so later, the author of this article received a friendly

letter from the City of Eugene Police Department that there was change (quarters for library parking) in view.

(Continued on page 2)

Obituaries

HELEN BARNARD 1918-2015

HELEN JOINED THE OBSIDIANS LATER IN LIFE and focused her interests on bus trip participation. Her first bus trip was in 1997 and she joined the club a year later. She went on a total of 28 bus trips, the last being in 2005 to Harrison Hot Springs in Canada.

She is survived by her children and their families.

Editor's Note: A complete obituary can be found in the April 5 issue of The Register-Guard.

MYRON (MIKE) STAHL 1915-2015

FORMER OBSIDIAN MEMBER MIKE STAHL passed away on March 24. Mike was the great-grandson of an 1850 Oregon Trail migrant. He was one of the first promoters of the Three Sisters Wilderness Area, helped build our Obsidian Lodge using his skill as an electrician, and then served as the president in 1952. Mike was climbs chair in 1951 and over the years led 26 trips, mainly mountain climbs. He made 30 mountain climbs and attended six summer camps. His last trip with the club was to Mary's Peak in 1990.

He is survived by his wife Dorothy, whom he met through the Obsidians, and four children.

Editor's Note: A complete obituary can be found in the April 5 issue of The Register-Guard.

(Break-ins continued from page 1)

They also sent a brochure with helpful hints on reducing the risk of a break-in:

- Don't leave anything in your car.
- Lock your vehicle every time you leave it.
- Completely close your car windows.
- Always take your keys with you. Don't hide them.
- Don't leave any sign that there might be valuables stowed out of sight.
- Park in well-lit, high activity locations—not in isolated areas.

If you must leave something in your car, think about your risk. Consider placing items in your trunk *before* arriving at your destination.

On one critical issue there is some difference of opinion among hikers ... whether to lock or not lock your car doors while on your hike or backpack. But in the May, 2006 *Bulletin* article, *Car Clouting Becoming a Major Trailhead Concern*, Marshall Kandell writes: *However, a search of National Park, National Forest, law enforcement, insurance company and outdoor organization web-sites discloses an almost unanimous urging to "lock your car and be sure the windows are closed all the way!"*

THE OBSIDIANS FACEBOOK PAGE www.facebook.com/#!/theobsidians

Just click on the link and start using/viewing today!

OBSIDIANS, INC

P.O. Box 51510, Eugene, OR 97405

Website: www.obsidians.org

Board of Directors

Matt Bell, President
Shellie Roberston, Vice President
Susan Wanser, Secretary
Stewart Hoeg, Treasurer
Don Colgan, John Cooper, Sharon Cutsforth, Pat Esch, Tom Musselwhite, & Elle Weaver

Board meetings are held at 6 PM the first Wednesday of each month, except October when it is the Wednesday after the Annual Meeting, and no meeting in August.

Committee Chairpersons

Byways By Bus Sharon Cutsforth
Climbs Maryanne Reiter
Concessions Laurie Funkhouser
Conservation/SciEd Tom Musselwhite
Entertainment Susan Wanser
Extended Trips Chris Stockdale
Finance Stewart Hoeg
Librarian/Historian Lenore McManigal
Lodge Building Doug Nelson
Lodge Grounds John Jacobsen
Membership Elle Weaver
Online Wayne Deeter
Publications Lou Maenz
Publicity Jan Jacobsen
Safety Pat Esch
Summer Camp Lana Lindstrom
Summer Trips John Cooper
Trail Maintenance Matt Bell
Winter Trips Anne Bonine

⁷⁴ OBSIDIAN Bulletin

© 2015

Published monthly except August and December. Articles, story ideas, letters to the editor and other editorial submissions should be emailed to:

bulletin@obsidians.org

For reprint rights, contact:

The Obsidian Bulletin

P.O. Box 51510, Eugene, OR 97405

Deadline

for June 2015 Bulletin

Saturday, May 30, 2015

April Assembly/Mailing Team

*Assembly & Mail Manager: Lou Maenz
Team: Tom Adamcyk, Don Baldwin, Janet Hall, Yuan Hopkins Joanne Ledet, Lenore McManigal, and Barbara Schomaker.*

Editorial Team

Writing & Editorial Staff - Bea Fontana, Janet Jacobsen, Joanne Ledet, Lou Maenz and Ethel Weltman

Copy Editors - Ethel Weltman & Nancy White

Graphics Design & Desktop Publishing - Stewart Hoeg

Member Spotlight—Judy Ness

Interviewed by Anne Hollander

RECENTLY A GROUP OF OBSIDIANS WENT TO THE LAURELWOOD GRILL to eat and hear Judy Ness's band, called *33 and the Thylds*. The *Thylds* are a trio playing a spicy blend of alt. rock, country, folk, old-timey, bluish-grass and hits from the 40s–70s. They play almost every other Friday night. 'Twas great fun!

How did you first connect with the Obsidians?

Back in the 80s I worked with Bea Fontana at the UO Bookstore. She was always going somewhere doing fun things. It was Obsidian trips. The people in the club were

I appreciate vocal stylists, those with personal voices that tell a story, conjure up images, color, and emotion: Nina Simone, Carmen McCrae, Ella, Etta, Aretha, Billie, Janis and others. If I could sing like somebody else it would be Roy Orbison.

Were you musical as a child?

I was yearning to sing in first grade. It was an amazing day to finally be part of the second grade Chancel Choir in church. Music was a way of having a voice when there was not much chance of it in other areas.



smart, positive, funny, and were happy tromping around outside. I appreciated their obvious health and vitality. They were a wonderful example of what I wanted—to live with awareness and courage, and to get outside and enjoy myself. Eventually I became a member. The Obsidians taught me to play again, and also, no matter what happens, just keep paddling.

You have many varied interests: mushrooming, hiking, weaving, yoga, tai chi, music, and more. Tell me about your music.

Our band just wants to have fun playing music and enjoy our audience. If we have fun, the audience does too. That's it.

The *Thylds* play a variety of styles. What kind of music do you like?

Tell me about your weaving?

I specialize in tapestry art for the wall, and have a special interest in Norwegian techniques and Diné (Navajo) textiles. And I teach weaving, spinning and dyeing.

What drives your interests? Do you experience a meaning or purpose in your life?

Curiosity is what drives me. I'm interested in how things work. And I have a spiritual practice that includes meditation, yoga, and tai chi that helps me be present, to become more awake and aware. My purpose is just that.

What do you consider your greatest success?

Being here at 63, and when waking in the morning, eager to find out what is going to happen today.

Thank you Judy.

Board Notes

By Susan Wanser

President Matt Bell called the meeting to order. Other Board members present: John Cooper, Sharon Cutsforth, Pat Esch, Tom Musselwhite, Shellie Robertson, Susan Wanser and Elle Weaver. Also present were: Laurie Funkhouser, Kathy Hoeg, Stewart Hoeg, Janet Jacobsen, John Jacobsen, Lana Lindstrom, Lou Maenz, Lenore McManigal, Doug Nelson and Maryanne Reiter.

The Board approved the minutes of the April 2015 meeting.

Treasurer's Report: Stewart Hoeg reviewed the Budget-vs-Actual Report and the Balance Sheet. The Board approved payment of the bills.

COMMITTEE REPORTS

Summer Trips (John Cooper): There were 31 activities completed by 215 members and 25 nonmembers. Remaining Scheduled Summer Trips – 57. Summer Trips held a Leadership Orientation Night with 25 participants. Thanks to all committee members that helped make this a successful event and thanks to the leaders that came.

Climbs (Maryanne Reiter): The 2015 Obsidians/EMR Climb School began April 6 with an introduction class. Twenty-two volunteers, including 15 Obsidians, helped teach the course. So far, there are 21 climbs on this year's schedule with peaks ranging from northern Washington to southern California.

Trail Maintenance (Matthew Bell): There was one outing this past month in Amazon Headwaters Park. We worked to cut back brush from the trail sides, reestablish the edges of the raised turnpike, clean drainage features, and clean kiosks.

Highways and Byways By Bus (Sharon Cutsforth): The Old Town Bandon and Coastal Birding trip was enjoyed by 18 members. The May 12 bus trip, A Day at the Oregon Zoo, has been cancelled due to low number of signups.

Summer Camp (Lana Lindstrom): Summer Camp 2016 will be in the Ruby Mountains, Lamoille Canyon, in NE Nevada near Elko.

Extended Trips (Chris Stockdale): The trip scheduled for the Oregon Gardens was cancelled due to lack of sign-ups.

Conservation, Science, & Education (Tom Musselwhite): April's ExploraTalk was attended by 50 people.

Publication (Lou Maenz): Publications mailed 204 Bulletins in April.

Entertainment (Susan Wanser): One hundred and seven people attended Bob Welch's presentation at the April potluck about his backpacking trip on the John Muir Trail.

Membership (Elle Weaver): Currently there are 449 members: 411 Active, 14 Associate, 6 Honorary, 7 Junior, and 11 Life.

Publicity (Janet Jacobsen): We have been working with Carrie Carl, Eugene Parks and Open Space-South Region Volun-

teer Coordinator in planning the Ridgeline Celebration/National Trails Day which will be held on Saturday, June 6 from 11:00-2:00 at the Spencer Butte Trailhead/paved lot. We have volunteered to host a display table and also sponsor a Ridgeline hike geared for guests at this event. Dave Cooper and Janet Jacobsen will co-lead a hike which will involve a car shuttle. Matt Bell will lead a trail maintenance interpretive hike. Lane County Events has asked us to lead a guided afternoon hike on the Ridgeline Trail for the Association of Bone and Joint Surgeons on July 10. A van will transport hikers from the Hilton to Fox Hollow where we will hike to Mt. Baldy.

Concessions (Laurie Funkhouser): Obsidians products were present at the Old Town Bandon Birding bus trip, Summer Trips Leader event and Potluck.

Online (Wayne Deeter): There are now 4,770 photos in 339 albums in the Obsidian photo gallery. We had 19 new people following the Obsidian page. That's a great number of new people following us. The bigger numbers this month were mostly due to Climb School happening. We had 24 students, so some excited new members were watching and interacting with the page.

Library/Historian (Lenore McManigal): All of the reports in the March *Bulletin* have been recorded.

Lodge Building (Doug Nelson): There are three rentals to report. My heartfelt THANKS to all the Obsidians who help take such good care of the building. All of you who have helped clean up after your events and gone the extra distance to care for our home are much appreciated! I would additionally like to thank Clara Emlen, May Fogg, Betsy Halpern, Yuan Hopkins, Mary Livingston, Barbara Shomaker, and Fumiyo Tao for their help in cleaning the Lodge under Janet's leadership..

Lodge Grounds (John Jacobsen): There were several work parties during the last month: April 18 – Spring cleanup. Thanks to Clara Emlen, Ron Green, Ken Kodama, Jim Whitfield and Nancy Whitfield for helping mow, weed and mulch. April 30 – Thanks to Jim Whitfield for helping with spraying the drives and parking areas. May 5 – Thanks to Brenda Kameenui, Joanne Ledet, Jim Whitfield and Nancy Whitfield for weeding and mulching.

NEW BUSINESS

The Board approved three applicants for new membership.

DISCUSSION

Doug and Laurie will do some research about how to manage the mold that has developed in the Board Room. This topic will be discussed further at a future time.

ANNOUNCEMENTS

The next Board meeting will be on June 3 at 6:00 PM.

The meeting adjourned for food at La Oficina.

Trip Reports & Other Activities



Hikes

Water Treatment/Waste Plant Tours

March 13, 2015

Leader & Photographer: Mark Hougardy

Hike: 2 miles, 0 ft. (Easy)

WHAT'S IN YOUR WATER BOTTLE? How does river water become the tap water we drink and how is wastewater made safe for wildlife and others downstream? To learn more, a small group of Obsidians spent a Friday afternoon visiting the local water intake and the wastewater facilities. Our first visit was to the Hayden Bridge Water Filtration Plant, located adjacent to the McKenzie River, in Springfield. The facility is no small operation; it serves the needs of 200,000 people on a daily basis by removing water directly from the river, treating it, and finally delivering it to our taps. Here are some observations from our hour long visit: (1) The facility is very high-tech and water quality is measured at all stages of the process both by computer and by humans with hourly lab checks; (2) Security is paramount—the plant is gated with a security fence/gate and



cameras are everywhere; (3) Our local water system has about two days of water reserves if there is a calamity; (4) On the day we visited, the facility had processed and was sending out 16 million gallons (equivalent to 24 olympic-size swimming pools) of water to the surrounding community. Next, we traveled to the Eugene/Springfield Water Pollution Control Facility in Eugene. This is where all of the waste materials that go down the drain from our households and businesses are processed. The plant is located adjacent

to the Willamette River and bordered to the north by the Beltline. Our hour and a half visit was very informative, and included: (1) More than 99% of what arrives at the facility is water; less than 1% are solid materials that need to be either removed or turned into bio-solids; (2) Most of the odoriferous gases are collected and used to power a generator that supplies 50-60% of the energy needs of the facility; (3) Waste materials can take up to ten hours, once they leave your home, until it reaches the wastewater facility; then wastewater can take another ten hours to be processed. In short, waste materials take less than 24 hours until that water is returned to the river; (4) The amount of water being cleaned and being returned to the Willamette River that day was about 15 million gallons (roughly 23 olympic-size swimming pools); (5) During the summer, the plant can process up to 70 million gallons per day (106 olympic-size swimming pools) of wastewater! Members: Anne Bonine, Roberta Chord, David Cooper, Anna Hougardy, Christiane Hougardy, Mark Hougardy, Janet Jacobsen, Helen Martz, Jack O'Donnell, Jorry Rolfe, Tom Rundle, Pat Soussan, Jim Whitfield. Nonmembers: Simona Braun, John Boren.

Amazon Headwaters/Spencer Butte

March 25, 2015 through April 22, 2015

Leader: Janet Jacobsen

Hike: 6.2 miles, 1,530 ft. (Moderate)

THE HIKERS BY DATE WERE: MARCH 25—Members: Carla Cooper, David Cooper, Hilary Fisher, Barbara Gunther, Janet Jacobsen, Bob Johnson, David Lodeesen, Craig Molitor, Caroline Moore, Jorry Rolfe, Mike Smith, Barbara Theus, Tommy Young. Nonmembers: Nikki Frank. **APRIL 1**—Members: David Cooper, Hilary Fisher, Barbara Gunther, Janet Jacobsen, Craig Molitor, Caroline Moore, Jorry Rolfe, Tom Rundle, Mike Smith, Tommy Young. Nonmembers: Beverly O'Connell. **APRIL 8**—Members: David Cooper, Hilary Fisher, Barbara Gunther, Lana Lindstrom, Caroline Moore, Gary Spizizen, Nancy Whitfield, Michael Wolf, Tommy Young. **APRIL 15**—Members: Carla Cooper, David Cooper, Hilary Fisher, Barbara Gunther, Janet Jacobsen, Lana Lindstrom, David Lodeesen, Craig Molitor, Caroline Moore, Mike Smith, Tommy Young. **APRIL 22**—Members: Barbara Gunther, Janet Jacobsen, David Lodeesen, Carla Lyon, Craig Molitor, Mike Smith, Tommy Young.

Campus River Loop

March 27, 2015

Leader: Janet Jacobsen

Hike: 7 miles, (Easy)

WALKING THROUGH THE CAMPUS DURING SPRING BREAK is a quiet opportunity to enjoy the outside ornamentation,

sculptures and flowers. Our loop walk by the river included the *Talking Stones*, the art work under the I-5 Bridge, and Autzen Stadium. We were back at the art museum around noon with three of us opting to stay for lunch and tour the new exhibits including two masterpieces on loan—a Claude Monet and a Modigliani. Members: Roberta Chord, Autumn Edwards, Chyanne Edwards, Trenton Edwards, Jane Hackett, Janet Jacobsen, David Lodeesen, Helen Martz.

SOLVE Spring Beach Cleanup

March 28, 2015

Leader: Joella Ewing

Photographer: Darko Sojak

Hike: 2 miles, (Easy)

OREGONIANS PICKED UP 62,500 LBS. OF TRASH on the 30th anniversary of this SOLVE-sponsored cleanup. It was a beautiful day on the beach with seven great folks. We collectively gathered about 100 pounds of trash, mostly small bits of styrofoam. Other trash collected included plastic products of all kinds, bottles, fireworks, tubes, coat hangers, boat seat mountings, rope and a huge plastic tarp in shreds. Lunch



after at the Bridgewater in Florence Old Town ended a perfect day. Darko made the best find with a couple of pairs of kids jeans. Members: Joella Ewing, Holger Krentz, Tom Musselwhite, Judy Newman, Barbara Schomaker, Darko Sojak, Michelle Tambellini. Nonmembers: Claire Belleau.

Browder Ridge

March 28, 2015

Leader: Randy Sinnott

Hike: 8.4 miles, 2,200 ft. (Moderate)

SPRING IS HERE, but it should not have been spring on Browder Ridge this early in the year. We set out from Gate Creek Trailhead on a steep gradient, several switchbacks until clearings began to appear. Then it began making a weak attempt to snow. Then we began encountering patches of the previous evening's snow. Clouds prevented us from seeing the valley or the distant peaks of the Cascades, but the immediate forest of old growth mountain hemlock and

fir made pleasant surroundings. The trail became snow covered and the tread was faint at times, but last year's tall bracken fern that often obscures the summer trail was dead and flattened by early season snows. Finally a rocky ridge was gained where the trail disappeared and we picked a route through snow-covered rocks until we came to an opening with a large cairn. Lunch was brief as the views were obscured and the wind and damp quickly chilled stationary bodies. The sun broke out on the return hike and the snow melting from the trees felt like a hard rain at times. But the views opened up and we finally had glimpses of Mt. Washington, the Sisters, Jefferson and Jack. This has to be a wonderful hike when fair weather and wild flowers prevail, but is a worthy trip even under wintry conditions. Members: Mari Baldwin, Alan Curtis, Ken DenOuden, Sam Miller, Jorry Rolfe, Randy Sinnott.

Hardesty Mountain

March 29, 2015

Leader: Mike Smith

Hike: 11.4 miles, 3,400 ft. (Difficult)

I DIDN'T GET COMPLAINTS that I had overrated the trip's difficulty. The whole group hung in there well, doing the 3,400 foot vertical climb to the summit and seeing a few of the Cascades during our lunch stop in bright sunshine. The only people we saw on the trail were on the last part descending. We had the top of the mountain to ourselves. I like this hike a lot, and it was great to show it to a few stalwarts who wanted a good Palm Sunday workout. Wildflowers were blooming, especially the trilliums. Members: David Cooper, Janet Jacobsen, David Lodeesen, Mike Smith. Nonmembers: Consuelo Gomez, Joel Hutchins.

Ridgeline 10-Miler

April 3, 2015

Leader: David Cooper

Photographer: Carla Cooper

Hike: 10 miles, 1,550 ft. (Difficult)

WE HAD A GOOD BREAK IN THE WEATHER for our hike



with rain the night before and starting again soon after we finished. There were lots of spring wildflowers to look at along the trail. The photographers in the group took ad-

vantage of this, getting photos of trilliums, calypso orchids, fawn lilies, baby blue eyes and more. In addition to the flowers, we also spotted a pair of blacktail deer and shared our lunch spot with a small lizard. Members: Carla Cooper, David Cooper, Janet Jacobsen, Holger Krentz, Tom Rundle, Tommy Young.

Finley Wildlife Refuge with Rick Ahrens

April 4, 2015

Leader: Jane Hackett

Photographer: Darko Sojak

Hike: 6 miles, 200 ft. (Easy)

IT WAS A DELIGHTFUL TRIP. As usual, Rick provided more information than anyone could hope for. We missed the rain and the temperature was perfect. We were able to observe both large and small birds. Darko was the only one who saw a large owl, resting in the first blind we walked up to. We think it was a Great Horned Owl, by size and color. On our



hike around Mill Hill Pond, we flushed a duck off her nest. We did not know this until Rick took a look at where she popped out of. Six perfect little duck eggs. The nest was right along the trail above the pond. The bookstore had a great selection of books. I had a couple of firsts, a Black-throated Gray Warbler and a Ring-necked Duck. Rick, unlike the rest of us, was able to identify birds by their song. Within the next week or two, most of the bigger birds will have traveled on and the smaller birds will disappear into the trees. This is still a great place to visit now, and the wild flowers are just getting started. There is a wonderful crop of poison oak, so stay in the middle of the wide trail. Members: Rick Ahrens, Judy Garwood, Jane Hackett, Yuan Hopkins, Hazel Jones, Jerry Jones, Holger Krentz, Brian Popowsky, Darko Sojak. Nonmembers: Simona Braun, Jeremy Lavagnino, Simon Venter.

Mt. Pisgah Sunset/Moonrise

April 5, 2015

Leader: Janet Jacobsen

Photographer: Darko Sojak

Hike: 4 miles, 1,000 ft. (Moderate)

WE WERE AMAZED THAT THE RAIN STOPPED just as we started hiking at 6:30 PM. We took Trail 3 and then Trail 4 to



reconnect with Trail 1 to reach the summit at 7:20 for the 7:44 sunset. It was too cloudy to see the moon but the sunset reds radiated from behind and up above the clouds. Our guest from Michigan, Jane Beckwith, had rave reviews for her first Pisgah sunset hike. We celebrated the celestial event with a supposedly symbolic three-layer cherry, chocolate cake and yogurt dessert. Members: Janet Jacobsen, Holger Krentz, Darko Sojak. Nonmembers: Jane Beckwith.

King's Valley

April 9, 2015

Leader: Dan Christensen

Hike: 4.8 miles, 1,100 ft. (Moderate)

THURSDAY WAS A BEAUTIFUL DAY FOR HIKING in the foothills of the Coast Range. Foggy, but pleasant in the morning, giving way to sunshine by mid-day. Unfortunately, Brad was the only Obsidian who took advantage of this opportunity. King's Valley is actually two separate hikes, each originating at historical sights which have become Benton County parks. The two sites are only a few miles apart on King's Valley road west of Philomath. The first hike originates at the Plunkett farmhouse, which was built in the 1860s. The hike follows Plunkett Creek east through a typical heavy vegetation Coast Range forest for about one-half mile, turns south and then west up and along a ridgeline to complete a loop hike of just over two miles, with a few hundred feet of elevation gain to return to the parking lot by the farmhouse. The second hike originates at Ft. Hoskins County Park. Ft. Hoskins was built in the 1850s to protect settlers from the local Indian tribes, then manned by volunteers during the Civil War and closed shortly afterwards. It was sold by the government to a settler in the 1860s. The original commandant's house, built in the 1850s, was moved back onto the site in 2012. The original settler's house, built in the 1860s, is also still well-preserved on the property. The hike consists of following a circular path around the fort site and then climbing and hiking along the ridgeline north of the fort site. The distance is just under three miles with a few hundred feet of elevation gain. In total, the hikes are 4.8 miles with elevation gain of 1,100 feet. The Ft. Hoskins

Park provides a nice picnic shelter should you wish to take a mid-hike break. If you leave Eugene at 8:00 AM you can be back shortly after 3:00 PM, even with a lunch break. Members: Brad Bennett, Dan Christensen.

Mt. Pisgah

April 10, 2015

Leader: Lana Lindstrom

Photographer: David Cooper

Hike: 7.5 miles, 2,400 ft. (Moderate)

IT WAS THE MOST UNUSUAL GROUP of seven persons that I've ever been with: three people with a *Cooper* surname (2 unrelated families); two *Johns*, and two nonmembers from Roseburg, who didn't realize the other person was coming!



The weather fully cooperated and we saw a variety of wildflowers including shooting stars, camas, hound's tongue, miner's lettuce, trilliums, and fawn lilies. Plus, we got a good workout while enjoying interesting conversations and the natural beauty of the area. We are so lucky to have the Mt. Pisgah and Buford Park area within a 15 minute drive! Members: Carla Cooper, David Cooper, John Cooper, Betty Grant, Lana Lindstrom. Nonmembers: John Malone, Consuelo Gomez.

Yachats to Walport

April 11, 2015

Leader: Janet Jacobsen

Photographer: Darko Sojak

Hike: 7 miles, 0 ft. (Moderate)

WHAT WERE THE THOUSANDS OF BLUE VIOLET JELLY-LIKE CREATURES THAT RESTED ON THE BEACH? Each creature had a delicate sail that seemed like a butterfly ready to fly. We didn't know that it was a massive die-off. Back home, Steve Johnson emailed us that they were *Verella* commonly called little sail, by the wind sailors, or purple sailors. Two days later in the *Register-Guard* it was reported that this massive die-off occurs each spring "when warm water and storms draw them to near shore, the wind blows them onto beaches, where they die in piles." See the photos in the members-

only gallery. Except for the surprise ten-



minute blustery wind and rain, we had a sunny walk on the beach. Members: Carla Cooper, David Cooper, Jane Hackett, Janet Jacobsen, Ellen Johnson, Steven Johnson, Ed Lichtenstein, Nola Nelson, Dave Predeek, Darko Sojak, Pat Soussan, Nancy Whitfield. Nonmembers: Kathy Randall, Lucy Nelson.

Mary's Peak (Conner's Camp)

April 12, 2015

Leader: Mike Smith

Photographer: Carla Cooper

Hike: 7 miles, 1,700 ft. (Moderate)

ELEVEN OF US HIKED UP MARY'S PEAK from Conner's Camp. While sunny in the valley, we ran into wet weather



which was melting snow from the trees. Snow level was about 3,500 feet. On top, it was cold but not windy, and we had an early lunch. The valley was somewhat cloudy, and we did not see the Sisters until the descent. Because it was April 12, Janet read a poem by Ogden Nash. Mike pointed out it was the 54th anniversary of Gagarin's orbiting the earth and the 34th anniversary of the first launch of the NASA Space Shuttle. A lot of people were ascending as we returned. This was a seven-mile round trip hike with 1,530 feet elevation gain. Members: Carla Cooper, David Cooper, Barbara Gunther, Jennifer Haynes, Janet Jacobsen, Becky Lipton, Chris Shuraleff, Mike Smith, Fumiyo Tao, Nancy Whitfield. Nonmembers: Michelle Blackwell.

Talking Stones

April 12, 2015

Leader: Jane Hackett

Photographer: Holger Krentz

Hike: 5.5 miles, 0 ft. (Easy)

IT WAS A BUSY DAY AT ALTON BAKER PARK. With the help of Holger, we found all 15 *Talking Stones*. It was sunny and they were having a 5K and 8K race/fund raiser,



which I thought would provide some competition for use of the trail. We covered about 5.5 miles, with some backtracking to reach our goal. We did not have much conflict with runners. Holger took pictures of all the stones and some of them should be in the gallery. It made for an interesting morning. Members: Jane Hackett, Holger Krentz. Nonmembers: Alice Krentz.

Angel's Rest

April 18, 2015

Leader: Jim Pierce

Hike: 4.6 miles, 1,650 ft. (Moderate)

A GLORIOUS DAY IN THE COLUMBIA GORGE. The trail to Angel's Rest was relatively dry and there were many other hikers out enjoying the shady trail. It was windy on the top of the palisades, so we had lunch in the trees. This is such a great hike, maybe we will do it again when the fall colors are out. Members: Jim Pierce. Nonmembers: Suzanne McQueen.

Carpenter Mt. /Tidbits Mt. Combo

April 18, 2015

Leader: Steven Johnson

Photographer: Holger Krentz

Hike: 6.6 miles, 2,050 ft. (Moderate)

FOR THIS TRIP, I COMBINED TWO SHORT HIKES in the Blue River area to make up a full day's adventure to the top of two great viewpoints. Our first hike was to Carpenter Mountain lookout, an active lookout that was restored in 1995. The trail up Carpenter Mt. is only 1.1 miles long, but gains 950 feet. The last bit before the summit involves a rock scramble and some exposure, but isn't too challenging. The reward is the exceptional views in all directions. If you have friends in town that would be interested in taking a short hike to a spectacular viewpoint, this is one to consider. For

our second hike, we drove an additional 20 miles of backroads to the Tidbits Mountain trailhead. On the way, we stopped to see a beautiful little waterfall I call Tidbits



Falls (see photo album). I scheduled this hike after a period of cold wet weather, so I expected some snow, but I was surprised at how much there was. We found ourselves post-holing through two feet of snow the last half mile to the summit. The lookout on Tidbits was destroyed in 1967 and all that remains is a concrete slab and some wood timbers left over from a wooden stairway to the top. The last climb to the top of Tidbits also involves a scramble on the rocks, but everyone made it to the top safely and enjoyed a late lunch and 360-degree views. Members: Janet Jacobsen, Ellen Johnson, Steven Johnson, Holger Krentz. Nonmembers: Barbara Kay Cosby, Lucy Nelson.

Eagle Creek

April 19, 2015

Leader: Jim Pierce

Hike: 4.2 miles, 1,200 ft. (Moderate)

RATHER THAN HIKE THE RELATIVELY FLAT TRAIL up Eagle Creek, we decided to make two shorter, steeper hikes on the Washington side of the Columbia Gorge—Beacon Rock and Rodney Falls. Beacon Rock is an 800-foot monolith named by Lewis and Clark. The trail is less than two miles round-trip with 47 switchbacks and 600 feet of elevation gain, according to Bill Sullivan. We saw a dozen kinds of wildflowers and a half a dozen kinds of lichens while dodging the weekend crowd on the narrow trail. The Rodney Falls trail is right across Highway 14. It was also packed with hikers. The cool of the forest and waterfalls was especially welcome on the hot day. There are several waterfalls and ALL are spectacular, especially the Wind Grotto at the top of Rodney Falls. We enjoyed the day. Members: Jim Pierce. Nonmembers: Suzanne McQueen.

Spencer Butte

April 19, 2015

Leader & Photographer: Darko Sojak

Hike: 2 miles, 600 ft. (Moderate)

ON A WARM AND HAZY DAY seven of us hiked up the steep West Route of Spencer Butte, right here in the backyard of

Eugene. We descended by the main route, which is going through a heavy trail reconstruction project. Thanks to everybody who participated in collecting litter along the trail.



Members: Roberta Chord, Carla Cooper, David Cooper, Janet Jacobsen, Holger Krentz, Darko Sojak. Nonmembers: Ean Estes.

made a quick check at Bandon Marsh to see what birds were around. Then it was a few hours of free time to enjoy the boardwalk art, shop and find some lunch. Chowder, fish & chips and chocolate were some of the favorite finds. The nature walk with interpretive signage at Coquille Point was a real joy: beautiful scenery, birds in the air, on the rocks and in the water, as well as wildflowers in bloom. Lodging for the night was at the Sunset Oceanview Motel, the rooms were spacious and comfortable. The ocean view was lovely and many of us enjoyed dinner at Lord Bennett's Restaurant, where we watched a beautiful ocean sunset. A few hardy Obsidians descended the 100+ steps down to the beach and walked back into town for dinner. Wednesday morning found us on the road again, first to Misty Meadows Jams for a great selection of home grown jams, jellies, syrups and other Oregon products plus a great display of memorabilia. Along the way, we had a good view of several cranberry bogs. Next stop was Face Rock Creamery, where we learned about the history of Bandon cheese making and the development of the Face Rock Creamery Company. Of course, we enjoyed sampling the wide variety of cheese curds, deciding which ones to bring home and having a late



Byways By Bus

Old Town Bandon Birding **April 7, 2015**

Leader: Sharon Cutsforth, Assistant: Rick Ahrens
Photographer: Sharon Cutsforth

A SMALL BUT ENTHUSIASTIC GROUP OF EXPLORERS headed out on a cool, cloudy Tuesday morning to look for birds, shopping and fun. Our big comfortable MTR motor coach and cheerful driver, Rick Johnson, made our travels very easy. We experienced some rain showers, but only while we were traveling. Each time we disembarked, it was dry and the weather in Bandon was lovely—great for walking on the beach and around town. We enjoyed our usual Obsidian coffee break at the rest area north of Roseburg before heading west on Highway 42 towards the coast. Along the way, Obsidian member and naturalist Rick Ahrens shared bits of information on a variety of topics; plants, trees, geology, birds and more. We visited the impressive Coquille Community Center, saw the Sawdust Theater and learned that the Coquille community has begun working to establish a real carousel—working with the Oregon Tourism Council to become part of an Oregon Carousel Trail project. We stopped at Bullard's Beach State Park for a close up look at Coquille Point Lighthouse and a pleasant walk on the beach. As we drove into Old Town Bandon, we



morning ice cream. As we left Bandon, we visited Bandon Marsh Ni-les'tun Wildlife Area. Unfortunately, Wednesday appeared to be birds' day off. We could hear some singing, but spotted very few birds. We did see a lovely display of California lilacs and some pretty wildflowers. We traveled north on 101, stopping at the Mill Casino for lunch and saw a great view of the bay. Here we had a good look at grebes and loons from the boardwalk behind the casino. Heading inland on 38, we stopped for a close-up look at the elk at Dean Creek Elk Viewing area. Some of the bulls are beginning to grow new antlers. We enjoyed a lovely drive along the Umpqua River—the pastures and fields are such a lush green. Cattle, horses, goats and sheep were also enjoying the new grass. Turning north on Lorane Highway took us past a herd of long-horned cattle, King Estates Winery and more pretty scenery. We arrived back at Shopko shortly before 5:00 p.m. After we completed all of our shopping stops, someone commented that perhaps we should promote our bus trips as the Obsidian economic stimulus tour. Some

of the birds spotted in various areas were blue heron, egrets, red-winged blackbirds, white-crowned sparrow, swallows, doves, Canada geese, mallards, pintails, common loon, western grebe, horned grebe, red-tailed hawk, peregrine falcon, bald eagles, gulls, pelagic and Brandt's cormorants, common murre, and buffleheads, scoters. Whales were also sighted. Special thanks to Rick Ahrens and Charles Thomas for bringing their spotting scopes and sharing their birding expertise with us. Also, thanks to Janet Jacobsen for bringing Obsidian merchandise, modeling the Obsidian ponchos for us, and for sharing the ten reasons one should have a poncho. Members: Thomas Adamcyk, Rick Ahrens, Bill Arthur, Barbara Beard, Paul Beard, Paula Beard, Barbara Bruns, Sharon Cutsforth, Donna Halker, Janet Jacobsen, John Jacobsen, Barbara Payne, Don Payne, Judy Phelps, Margaret Prentice, Susan Sanazaro, Charles Thomas, Mary Ellen West.



Bike Trips

Marion County/Ankeny Wildlife Ride

April 17, 2015

Leader: Richard Hughes

Bike: 26 miles, 602 ft. (Moderate)

ELEVEN RIDERS MEANDERED THE ANKENY WILDLIFE REFUGE on a beautiful sunny morning toward the city of Independence. We were greeted by ospreys as we crossed the Willamette River via the ferry. After sixteen miles we reached the park in Independence where we munched and lunched. Crossing back over the river, we took refuge back in our cars and shared chocolate truffles. Members: Barbara Aten, Anne Bonine, Patricia Esch, Kitson Graham, Peter Graham, Betty Grant, Richard Hughes, Jonathan Jost, Don Kindt, Lana Lindstrom, Judy Terry.

Bike/Birding West Eugene Wetlands

April 23, 2015

Leader: Anne Montgomery

Photographer: Holger Krentz

Bike: 14 miles, 50 ft. (Easy)

WE WERE SUCH A JOLLY, LITTLE GROUP that our spirits were not even dampened by an intermittent drizzle! Our ride on the West Eugene Wetlands Bike Path was decorated by the blue blooms of camas, the pink of checkermallow,



the white of daisies and the yellow of buttercups. We saw the ever-present starlings and mallard ducks in addition to the species of song sparrow, violet-green swallow, turkey vulture, Canada geese with goslings, green-wing teal, cinnamon teal, dowitcher, dunlin, scrub jay, red-winged blackbird, great egret, kestrel, yellow-legs, shoveler duck, coot, and meadowlark. That gave us a total of eighteen species, which isn't bad for a non-expert like me. My great thanks to the folks who participated on the trip as they made it such a joy for me to lead. Members: Joan Bradley, Holger Krentz, Anne Montgomery, Tom Rundle, Meg Stewart Smith. Non-members: Alice Krentz.

Summer Trips Leadership Orientation

April 22, 2015

Leader: John Cooper

THE LEADERSHIP ORIENTATION AND SUMMER TRIPS KICKOFF NIGHT STARTED WITH A POWER BAR TASTE-OFF. The top vote-getter went to Tommy Young's oatmeal seed balls. Socializing occurred, but everyone was ready to hear Judy Terry's presentation of the online sign up system. Janet Jacobsen then reviewed what needs to be said and done by the leader before leaving the parking lot for the trailhead. A first aid skit was orchestrated by Janet Jacobsen. This spurred much discussion around treating an injured hiker. There was an insightful overview of the skit by Bruce Tuff. The event was wrapped up by Don Colgan, testing everyone's memory in naming the ten essentials. A lot was covered and a lot was learned. Thanks to the Summer Trips subcommittee that put on this event and also to Laurie Funkhouser, Carla and Dave Cooper, Jane Hackett, and Roberta Chord. Also in attendance were Tom Musslewhite, John Cooper, Chyanne Edwards, Jim Whitfield, Scott Hovis, Lyndell Wilken, Keiko Bryan, Bob Theus, Judy Ness, Valerie Metcalf, Brenda Kameenui, Darko Sojak, Kathy Hoeg, David Lodeesen and Mark Hougardy.

Upcoming



Wildwood Recreation Area & Salmon River

Date: June 30 (Tuesday)

Leaders: Paul & Barbara Beard

Cost: \$48 (\$50 nonmembers)

Reservations/checks: Mary Lee Cheadle 689-1085

THIS TRIP WILL FIND OBSIDIANS AND FRIENDS traveling to the Welches area and into the Wildwood Recreation Area located off Hwy. 26. This scenic trip will include some of the best rivers and trails Oregon has to offer, especially for seniors looking for an area for short walks. The Salmon River with its excellent nature path features an underground viewing area of trout and steelhead in their natural habitat. With headwaters in the Trillium Lake and Salmon-Huckleberry Wilderness area, the river runs a short distance of 35–40 miles before its confluence with the Sandy River. Much of the river is protected wilderness with many waterfalls. For the hardy and experienced hiker, this river also has much to offer. *Oregon Field Guide* featured kayaking part of the river with some 80 foot waterfalls and beautiful pools. We will eat our sack lunches in a good picnic area with great blacktop walkways. Come and experience a beautiful summer day walking beside this pristine river. (Some trails are wheelchair accessible.) Our homeward route will take us to Hwy. 99E and the Bauman Farms at Gervais. The Oregon strawberries should still be available, so bring your cooler.

More Food IV

Date: July 16 (Thursday)

Leader: Mary Ellen West

Cost: \$50 (\$52 nonmembers)

Reservations/checks: Janet Speelman 344-3019

THIS TRIP WILL CONTINUE OUR EXPLORATION OF WILLAMETTE VALLEY FOOD PRODUCERS. Our first stop will be at Groundwork Organics, a farm on River Road that supplies many restaurants, farmers markets and its own stand. We will have our coffee break here and be able to shop for fresh produce. Then we will visit our old friend— Camas Country Mill—at the new farm store location. All of the products we have seen and enjoyed before are available here. Heading north to the Monmouth area, we will stop at Lavender Lakes Farm to enjoy the sight and smell of twelve acres of lavender. We will have lunch here (bring your own) with fresh squeezed lemonade as a treat (cost included). Their gift shop offers many lavender based items for sale, and we will have an opportunity to watch the process of distilling lavender to oil. As we begin our journey home, we plan to stop at the Willamette Valley Cheese Company near Salem. Here we will see the complete operation, from cows to cheese. They produce a wide variety of cheeses and, of course, there is a sales room. Our final food place will be

the Chocolate Decadence production facility and sales room in north Eugene. No one should come home hungry from this trip! Bring a sack lunch and a cooler (recommended) for shopping.

Fun at Yellowstone & Jackson Hole

Date: Sept 13 -19 (Sunday - Saturday)

Leader: Sharon Cutsforth

Cost: \$1,124 (\$1,138 non) Barbara Payne 746-1964

Fall Color-North Santiam & Breitenbush Rivers

Date: Oct 8 (Thursday)

Leaders: Paul and Barbara Beard

Cost: \$48 (\$50 nonmembers) Mary Lee Cheadle 689-1085

Christmas Party at the Lodge

Date: Dec 3 (Thursday) 2–4 PM

Desserts and entertainment

Contact: Liz Reanier 687-1925

Cost: \$1 (at the door)

Bus trip information is also available on the Obsidians home page: www.obsidians.org

Contact information at: bustrips@obsidians.org

Sharon Cutsforth, Bus Committee Chair, 746-4929

Whale Watch

Date: June 7

Leader: Joella

Cost: \$30

(Sunday)
Ewing



ACCORDING TO SKIPPER MIKE SORENSEN, we will have a better luck getting up close and personal with whales if we sail in June among the herd that calls the waters off Newport home, rather than trying to catch up with migrating whales in March. Thus the reason for the June 7 reservations.

The Miss Raven will sail at 2 PM, so we must arrive at the marina by 1:30 for check-in. We will leave Eugene at 9 AM and have lunch along the way, either your own sack lunch or at a restaurant, your choice.

Cost is \$30 per person plus the usual trip fee and mileage reimbursement. Please make your check out to the Newport Marina Store and Charters and mail to Joella Ewing, 2384 Washington Street, Eugene 97405, by June 1 to assure your place on the boat.

Ridgeline Celebration/National Trails Day Saturday, June 6

WATCH THE **OBSIDIAN WEBSITE**, the local newspapers and other media sources for event details for the National Trail Days and Ridgeline Celebration on Saturday, June 6 from 11:00–2:00 at the Spencer Butte parking lot. Find out about the new trail on the summit. The Obsidians



MOUNT PISGAH ARBORETUM

Festival Setup Work Party Sat, May 16, 10 AM – 1 PM

Wildflower Festival setup day. Help us set up canopies, hang signs and assist with the exhibits and other last minute preparations. Free admission to the festival on Sunday, May 17 for all volunteers who help out for two hours or more.

Wildflower & Music Festival Sun, May 17, 10 AM–5 PM

Join us for a celebration of all things wildflower related! The festival is loaded with fun things to do for the whole family. Proceeds from the Festival support the Arboretum's

table near the paved steps will display information about our club activities and how volunteers care for trails. Check *Online Signup* to see what Ridgeline/Spencer Butte hike(s) are added to the schedule. If you would like to help, contact Matt at trails@obsidians.org or publicity@obsidians.org

Trail Maintenance and Publicity Committees

work in habitat restoration and environmental education. Parking is free on festival day, and there is a free shuttle between the North parking lot and the festival entrance. Suggested donation: \$8 per person. Children under 12 free.

Baby and Family Walk Sat, May 30, 9–11 AM

Come get outside with your baby (and/or other young children) and meet other parents in the community. This is a great time of year for finding both beautiful wildflowers and aquatic critters that your little ones will be sure to enjoy. Led by the Arboretum's Education Coordinator Jenny Laxton, this walk will be stroller accessible. Meet at the Arboretum Visitor Center. \$8 per family, Members free.

Invasive Removal Work Party Sat, May 30, 10 AM–1 PM

Pulling, cutting, and digging blackberries and other invasives. Meet at the Arboretum Visitor Center. Tools, gloves, and a parking pass will be provided to volunteers (we suggest you bring along a water bottle). Please RSVP w/site@mountpisgaharboretum.org if you plan to attend.

Oatmeal Balls Win the Energy Bar Taste-off

Carla Cooper

THERE WERE MANY ENERGY CHOICES for people to try at the leader orientation April 22. Kind words were said about the flavorful *Kind* brand *Thai Sweet Chili* bar. Dark chocolate was quickly unwrapped and consumed. Dave Cooper promoted the *Picky Bars* made in Bend by professional track athletes. John Cooper's *Pecan Bars* and Tommy and Shelby Young's *Oatmeal Balls*, both homemade, were the big hits. We asked the winner, Tommy Young, if he ate one per mile. The no-bake balls are easy to make, addictive and could easily be eaten at that pace!

OATMEAL BALLS

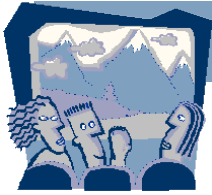
From Tommy and Shelby Young

- 1 cup oatmeal
- ½ cup raisins or mini chocolate chips
- ½ cup peanut butter or almond butter
- ½ cup ground flax seed
- ¼ cup agave or honey
- 1 tsp. vanilla extract
- Nuts (½ cup)

Keep hands moist with water to form balls, then refrigerate. You could also add coconut.



At The Lodge



POTLUCK

Friday May 15 at 6:30 PM

Ptari-tepui: North Face Climbing and Exploration

*Maikey Lopera, Federico Pisani, Ivan Calderon
and Manuel Escobar*

ON JANUARY 21 WE, A FOUR-MAN TEAM, DEPARTED CARACAS, VENEZUELA with the goal of exploring and climbing the remote Ptari-tepui in the Guyana (Guiana) Highlands of Southern Venezuela. Three days drive across half of the country placed us at the village of Kavanayen where we met our guides and porters. Three more days of jungle trek got us at the base of the unexplored north face of Ptari-tepui. Although this is the dry season for tepui climbing, conditions on this face were extremely cloudy, windy and wet. With an elusive summit and running out of time we established an 8-pitch route (sans summit) during the next 10 days. It was truly a magical and wet experience in the depths of the Guiana jungle!

May Potluck

Friday, May 15, 2015

Social hour 6 PM, Potluck 6:30 PM, Program 7:30 PM
Obsidian Lodge

*Bring your favorite potluck dish to share... along with plates,
utensils and cups... plus \$1 to help cover club expenses.*



ExploraTalk, Tuesday May 19 at 7 PM

Renaissance of Printed Guidebooks, From Word-of-Mouth to Unlimited Print

VOYAGERS TO THE AMERICAS encountered plants and animals that were radically new and unknown in Europe and Asia. How was knowledge of these American species disseminated, given that the American colonies had few or no printing industries, and it was often impossible to ship specimens across the Atlantic?

Longtime Obsidian and UO Professor of English and Folklore Gordon Sayre will answer this question and many more in a slide presentation about the development of printed guidebooks and catalogues of plant and animal species. These new guidebooks replaced face-to-face transfer

of information with high-quality illustrations that make it possible for readers to match descriptions and images with species they found in the field.

Gordon is the author of several academic books and is currently working on a project concerning Natural History writing about America in the Renaissance and the 18th century. His slide show, designed for the layman, will include many photos of botanical and ornithological paintings, drawings, and engravings from many regions of North America.

Upcoming

Summer Trips Update

THERE ARE NOW OVER 80 SUMMER TRIPS SCHEDULED. I appreciate all the leaders that have signed up for trips—offering variety and degrees of difficulty. Remaining to be scheduled are many terrific hikes that were led in the past but are not yet on the calendar. I know for some leaders it had been too early to commit to a summer or fall trip, but summer is on its way. Please be thinking of the following trips that still need leaders. You don't have to hold to this list. Lead one of your own favorite hikes.

Difficult: Dog Mountain, Black Crater, Jeff Park, Maxwell Butte, Rockpile Lake.

Moderate: Iron Mountain (a second one), Belknap Crater, Little Belknap Crater, Mt. Yoran, Divide Lake, Substitute Point, Bohemia Mountain, The Twins, Mt. June, Tire Mountain, Tam McArthur Rim, Olallie Mountain, French Pete Creek, Bachelor and Coffin Mountains, Middle Pyramid.

Easy: McDowell Creek Falls, Fuji Mt., Spirit, Moon, and Pinard Falls, Pisgah Summer Solstice, July Pisgah Sunset/Moonrise, Kentucky Falls.

John Cooper, Summer Trips Chair



Gomez, Consuelo
1439 Doerner Road
Roseburg, OR 97471
713-366-1199
Conniegom@aol.com

Randall, Kathy
4495 Corona Street,
Eugene, OR 97404
844-5916
katran23@comcast.net

Lepinski, John
4860 Whiteaker Street
Eugene, OR 97405
345-2319

Obsidians in the News

Be a Joiner with the *Obsidians* was a feature article in the April *Lane Monthly Magazine*. Reporter Joanna Bartlett joined a group of Obsidians on a Wednesday hike up Spencer Butte to check out the club and interview members. Carla Cooper's photos were used for the article. If you can't find a copy, check out the link on the Obsidian homepage.

Publicity Committee

Obsidian Calendar

May

- 15 Fri **Climbing in Venezuela** **Potluck**
- 16 Sat **Tamolitch Pool Hike E Strahon** 221-7730
- 16 Sat **Mt. Adams Climb McManigal** 503-635-9973
- 16 Sat **Mt. Hood Climb Reiter** 521-8472
- 16 Sat **Diamond Peak Grad. Climb McGlinsky** 232-0421
- 16 Sat **McKenzie River Hike D Johnson** 520-2470
- 17 May **Castle Rock Hike D Smith** 357-5208
- 19 Tue **Guidebook Renaissance** **ExploraTalk**
- 20 Wed **Spencer Butte Hike M Jacobsen** 343-8030
- 21 Thu **Pisgah-west side Hike M Colgan** 485-2787
- 22 Fri **Heceta Head Hike M Soussan** 345-3046
- 22 Fri **Creswell Environs Bike M Esch** 338-8280
- 23 Sat **Mt Pisgah (Swing Trail) Hike E Chord**... 729-4605
- 24 Sun **Diamond Peak Grad. Climb Tufts** 654-0214
- 24 Sun **Horse Rock Hike E Cooper** 344-8517
- 24 Sun **McKenzie River Hike M Hackett** 953-7046
- 26 Tue **Palmer Mt. Corvallis Hike M Theus** 510-0376
- 27 Wed **Spencer Butte Hike M Jacobsen** 343-8030
- 27 Wed **Spencer Butte Trl Mnt M Bell** 503-884-8829
- 30 Sat **Erma Bell Lakes Hike E Ewing** 344-9197
- 30 Sat **Smith Rock Climb Reiter** 521-8472
- 30 Sat **Fall Creek Hike M Hackett** 953-7046
- 30 Sat **Mt. Thielsen Climb Willhite** 406-570-4514

June

- 2 Tue **Mt. Pisgah Sun/Moon Hike M Jacobsen** ... 343-8030
- 3 Wed **Spencer Butte Hike M Jacobsen** 343-8030
- 5 Fri **Parvin Covered Bridges Bike M Esch** 338-8280
- 6 Sat **National Trails/Ridgeline M Bell** 503-884-8829
- 6 Sat **3 Mile Lake Hike M Hovis** 731-3412
- 6 Sat **Mt. Washington Grad. Climb Hamilton**... 343-6550
- 6 Sat **Sisters-Broken Top Climb D Ellis** 917-880-6744
- 6 Sat **Ridgeline Trail Hike E Jacobsen** 343-8030
- 7 Sun **Duffy Lake Hike M Terry** 345-0720
- 13 Sat **Whale Watch ExploraTalk E Ewing** 344-9197
- 13 Sat **Mt. Jefferson Climb D Ellis** 917-880-6744
- 13 Sat **South Sister Climb Deeter** 954-0924
- 14 Sun **Iron Mountain Hike M Cooper** 344-8517
- 16 Tue **To be determined** **ExploraTalk**
- 18 Thu **North Fork Willamette Hike M Hackett** 953-7046
- 20 Sat **Orcas Island, San Juans Lindstrom** 683-1409
- 24 Wed **Spencer Butte Trl Mnt M Bell** 503-884-8829
- 26 Fri **Vietnam and Cambodia Reiter** **Potluck**
- 28 Sun **Mt. Whitney Climb Hamilton** 343-6550
- 30 Tue **Wildwood Rec Area Bus Beard** 994-2337

July

- 10 Fri **Siuslaw Falls Bike M Esch** 338-8280
- 11 Sat **North Sister Climb Deeter** 954-0924
- 16 Thu **More Food IV Bus West** 343-5492
- 17 Fri **Mount Baker Climb D Ellis** 917-880-6744
- 19 Sun **Three Mile Lake Hike M Hackett** 953-7046
- 25 Sat **PCT Santiam/McKenzie Hike D Cooper** . 868-5427
- 25 Jul **Three Fingred Jack Climb Harris** 729-3460
- 29 Wed **Spencer Butte Trl Mnt M Bell** 503-884-8829



OBSIDIANS, INC. OBSIDIANS, INC. IS A NON-PROFIT ORGANIZATION
P.O. BOX 51510
EUGENE, OR 97405

RETURN SERVICE REQUESTED

PRESORTED STANDARD
US POSTAGE
PAID
EUGENE, OR
PERMIT 803



May 2015



Mt. Ptari-tepui in Venezuela—hear about climb at May Potluck