



Inside This Issue

Climb School	1
Leaders Wanted	1
Obituaries	2
Summer Camp Signup	2
New Members	2
2016 Bus Schedule	3
Board Notes	4
Trip Reports	5-10
Nearby Nature	11
Sullivan Books	11
Ad Hoc Heritage Committee	12
Thank-you Wes Prouty	12
Hardesty Logging Plan	13
Wed. and Sat. Urban Hikes	13
Potluck	14
ExploraTalk	14
Calendar	15
For Sale	15
Backpacking Class	15
Picture of the Month	16

Dates to Remember

March 15	ExploraTalk
March 25	Potluck
April 2	<i>Bulletin</i> deadline
April 6	Board Meeting

Complete current schedules at:
www.observians.org or
Register-Guard – Outdoors – Tuesday

Camp Robertson
 July 30-August 5
 See Registration Form Insert
 in printed *Bulletins*
 or at www.observians.org

2016 Climb School

Once again, the Obsidian Climbs Committee is sponsoring **Basic Climb School**. We teach the skills and get students psyched for the thrills of mountaineering. We love climbing and love helping those who want to be able to venture safely into the mountains.

The Obsidians and Eugene Mountain Rescue will teach the fundamentals of rock and glacier travel in classroom and field sessions of the 2016 Climb School, beginning March 28. We will help students learn knots, give you tips for gear, and share stories and words of advice. We will also have two field sessions where the classroom material will be put into use. For both the classroom and field sessions, we have a high instructor-to-student ratio to really help everyone with the skills. The cost is \$70 for Obsidian members or members of Eugene Mountain Rescue, and \$100 for nonmembers—an amazing deal for an extensive class like this.

Following the class, the Obsidians will be hosting graduation climbs for Climb School participants to put some of the new skills into practice. The climb fees for the graduation climbs are not included in the Climb School cost and the locations will be determined as the Obsidian climb schedule is developed.

Leaders Wanted!

IT IS AGAIN THE TIME OF YEAR that the Summer Trips Committee is seeking leaders new and old to begin submitting their trips for the 2016 season. Trips can range from local urban hikes and mountainous day hikes to extended backpacking trips. Bike and kayak/canoe trips are also needed to balance out the schedule. Trips can have a specific focus such as on geology, birds, urban art, holidays, and mushrooms. Recruiters for the Summer Trips Committee will be contacting club members who have led in the past or have indicated a willingness to lead. There is also a real need for new leaders. The committee would encourage members to sign up to lead. Wednesday, April 20 will be a Leadership Orientation to go over the steps to leading. Experienced leaders will be in attendance and can answer questions of members thinking of leading for the first time. A leader does not have to wait to be contacted and can just email summertrips@observians.org. The schedule, as it is developing, can be viewed by logging into your personal Obsidian account and clicking on the *Full Schedule* button. Leaders scheduling their trips early often get better choices. The summer schedule begins April 1 and ends Nov. 15. If you plan on leading a trip(s) this summer, email us with the following information:

- Leader's Name
- Date and day of week of trip
- Trip location/name
- Type of trip—hike, bike, walk, boat, etc.
- Round trip mileage of trip (on the trail, water, etc.)
- Elevation gain
- Skill rating—easy, moderate, difficult
- Round trip driving mileage

If help is needed using the web page or figuring out what trip to lead please email summertrips@observians.org or call John Cooper at 344-8517.

Obituaries

Janet Speelman 1938-2016

JANET AND HER HUSBAND, RICHARD, both joined the Obsidians in 1998 and her last trip with the club was in October of 2015 with a fall color trip to Sauvie Island. During that time span Janet was very involved with the bus group, participating in 138 trips. Not only did she enjoy the excursions, but she helped plan the upcoming trips, taking reservations and accepting payment for those trips. She also assisted the *Bulletin* mailing crew. Her contributions were greatly appreciated.

She is survived by Richard, also an Obsidian, two daughters and a son.

Editor's Note: A complete obituary can be found in the Feb. 28 issue of The Register-Guard.

Julia Snell 1920-2016

JULIA JOINED THE OBSIDIANS LATER IN LIFE, going on her first bus trip with the club in 2005. Her last bus trip was in October, 2012, and during those seven years she participated in 53 trips. She was an enthusiastic and energetic hiker on short walks. Julia loved adventure, having joined the US WAVES during WWII and traveling to over 25 countries with her late husband. She is survived by her children and grandchildren.

Summer Camp Signup Available March 15

CAMP ROBERTSON ONLINE SIGNUP OPENS TUESDAY, MARCH 15 at 7:00 AM. This camp is limited to the first 85 paid registrants. Obsidian members have preference for the first week of online signup. Full payment, together with the completed registration form, must be mailed within five days of registration—otherwise you will be cancelled. The registration form can be downloaded from the Obsidian web page and is also available as an insert in the mailed copy of this *Bulletin*. Information about Camp Robertson in the Ruby Mountains of Nevada can be found in the November/December 2015, January 2016 and February 2016 Obsidian *Bulletin* and at the Obsidian website, www.obsidians.org.

Welcome New Members

Adey, Steve
Eugene

Meriaho, Jorma
Dexter

Bowen, Sara
Eugene

Murray, Karen
Eugene

Judy, Caralynn
Lebanon

Northrop, Jim
Eugene

Koester, Steven
Eugene

OBSIDIANS, INC

P.O. Box 51510, Eugene, OR 97405

Website: www.obsidians.org

Board of Directors

Shellie Robertson, President
Laurie Funkhouser, Vice President
David Cooper, Secretary
Stewart Hoeg, Treasurer
John Cooper, Sharon Cutsforth, Pat Esch,
Todd Larsen & Maryanne Reiter.

Board meetings are held at 6 PM the first Wednesday of each month, except October when it is the Wednesday after the Annual Meeting. There is no August meeting.

Committee Chairpersons

Byways By Bus..... Sharon Cutsforth
Climbs..... Maryanne Reiter
Concessions TBA
Conservation/SciEd.....John Pegg
Entertainment... Lana Lindstrom/Judy Ness
Extended Trips..... Lana Lindstrom
Finance..... Stewart Hoeg
Librarian/Historian..... Lenore McManigal
Lodge Building Doug Nelson
Lodge Grounds John Jacobsen
Membership Laurie Funkhouser
Online Wayne Deeter
Publications Lou Maenz
Publicity..... Jan Jacobsen
Safety..... Pat Esch
Summer Camp John Jacobsen
Summer Trips John Cooper
Trail Maintenance.....Matt Bell
Winter Trips.....Anne Bonine

~OBSIDIAN Bulletin

© 2016

Published monthly except August and December. Articles, story ideas, letters to the editor and other editorial submissions should be emailed to:

bulletin@obsidians.org

For reprint rights, contact:
The Obsidian Bulletin

P.O. Box 51510, Eugene, OR 97405

Deadline

for April 2016 *Bulletin*

Saturday, April 2, 2016

February Assembly/Mailing Team

Assembly & Mail Manager: Clara Emlen
Team: Tom Adamcyk, Don Baldwin,
Sharon Cutsforth, Yuan Hopkins, Joanne Ledet, Lenore McManigal, Margaret Prentice & Martha Welches.

Editorial Team

Writing & Editorial Staff - Bea Fontana,
Janet Jacobsen, Joanne Ledet, Lou Maenz and Ethel Weltman

Copy Editors - Ethel Weltman & Nancy White

Graphics Design & Desktop Publishing - Stewart Hoeg & Carla Cooper

THE OBSIDIANS FACEBOOK PAGE www.facebook.com/#!/theobsidians

Just click on the link and start using/viewing today!

2016 Bus Schedule



Byways By Bus

Champoeg, Oregon, USA Beginning

Date: March 22, (Tuesday)

Leader: Mary Ellen West

Cost: \$53 (\$55 nonmembers)

Reservations & checks: Mary Lee Cheadle 689-1085

COME SEE WHERE OREGON BECAME AMERICAN. Champoeg State Park preserves the location of the 1843 vote where French Canadians, loyal to the Hudson Bay Company, and American settlers agreed in a very close vote to seek provisional government from the United States. Champoeg became a small village in a desirable agriculture area. Unfortunately in 1861 a still record flood washed most buildings down the river. The Robert Newell house, higher on the hill, survived and we will do a tour of the Pioneer Village. This complex is maintained by the DAR and gives a good picture of early settlement. The Newell house, built in 1852 is decorated in the 1860s style. It is lovingly filled with furnishings donated by Oregon pioneer families. The second floor has an outstanding exhibit of the gowns worn by wives of Oregon governors. We will have lunch here (*bring your own*) in a lovely room overlooking the Champoeg area. Also on our tour in the complex is the pioneer mother's cabin, the Butteville Academy—a one-room school of the 1860s, and the 1840s Butteville jail. Time permitting, we will visit the nearby Oregon State Park (Champoeg) Visitor Center, a jewel in itself. *Remember to bring a sack lunch.*

A Day at Wildlife Safari

Date: April 12, (Tuesday)

Leader: Judy Phelps

Cost: \$56 (\$58 nonmembers)

Reservations & checks: Mary Lee Cheadle 689-1085

OUR TRIP TODAY TAKES US TO WINSTON for tours of Wildlife Safari. If you have never been to this wild animal park, you are in for a treat. This is a drive-through park where the animals are free to roam and you are in a cage (vehicle). Perhaps we will even see some baby animals. Leaving Shopko at 8, we travel south on I-5, stopping along the way for our coffee break. Upon arriving at the park, we will be joined by a step-on guide for our first tour. The guide will have interesting information to share about the animals and their habitat. We will then have some free time for lunch, browsing the gift shop and checking out the animals and birds in the walk-through area. Lunch is on your own; you can purchase lunch at the village café or bring a sack lunch with you. We will then make a second tour through the park on our own. We may see different animals up close this time. Time permitting we will drive the back roads home, planning to be back at Shopko around 5 PM.

New Coastal Museum & Aquarium

Date: May 19, (Thursday)

Leader: Mary Ellen West

Cost: \$60 (\$62 non) Mary Lee Cheadle 689-1085

Birding at Summer Lake

Date: June 7-9 (Tuesday-Thursday)

Leader: Sharon Cutsforth

Cost: \$290 (\$296 nonmembers) Judy Phelps, 726-0118

More Food V

Date: July 14 (Thursday)

Leader: Mary Ellen West

Cost: \$49 (\$51 nonmembers) Barbara Payne, 746-1964

An Oregon Coast Adventure

Date: September 11-17, (Sunday-Saturday)

Leaders: Barbara & Paul Beard

Cost: \$1,045 (\$1,059 non) Barbara Payne, 746-1964

Fall Color & Harvest Time

Date: October 6 (Thursday)

Leader: Sharon Cutsforth

Cost: \$54 (\$56 nonmembers) Judy Phelps, 726-0118

Willamette Queen Dinner Cruise

Date: December 1 (Thursday)

Leaders: Barbara & Paul Beard

Cost: \$98 (\$100 nonmembers) Barbara Payne, 746-1964

Bus trip information is also available on the Obsidians
home page: www.obsidians.org

Contact information at: bustrips@obsidians.org

Sharon Cutsforth, Bus Committee Chair, 746-4929

March Board Notes

By Dave Cooper

President Shellie Robertson called the meeting to order. Other Board members present: Matt Bell, David Cooper, Sharon Cutsforth, Pat Esch, Laurie Funkhouser, Todd Larsen, and Maryanne Reiter. Also present were: Stewart Hoeg, John Jacobsen, Judy Ness, Doug Nelson.

The Board approved the minutes of the February 2016 meeting.

Treasurer's Report: Stewart Hoeg reviewed the Budget-vs-Actual Report and the Balance Sheet.

The Board approved payment of the bills.

OLD BUSINESS

Ad Hoc Memberships Class Review (Laurie Funkhouser): The Board was presented with background information and the recommendations of the committee. After discussion the Board voted to support the proposed changes of eliminating the Associate Membership class, changing the Bus Trips membership requirement from three to two trips, and simplifying the language regarding Junior Membership. The Board also authorized the Ad Hoc committee to investigate the issue of membership termination and make a recommendation. A fuller explanation of proposed changes will be made available before a vote by the membership at the annual meeting.

Membership/Participation Data: John Jacobsen presented graphs showing trends in membership, kinds of activities, and number of leaders. There was discussion of the need to recruit new leaders.

Still no volunteer to chair the Concession Committee but seems to be working well as a collective effort.

COMMITTEE REPORTS

Summer Trips (John Cooper): The committee met in February to start planning for Summer Trips 2016. Early leader recruiting by Janet Jacobsen has started for April and May trips. So far there are 39 trips on the 2016 calendar.

Winter Trips (Anne Bonine): During February there were 20 hikes, 2 cross-country ski and 2 snowshoe trips.

Climbs (Maryanne Reiter): The Climbs Committee launched another Climb school on February 16, 2016 with registration filling up in about a week. The committee continues to develop a list of Climbs for 2016 and recruit leaders for the upcoming season.

Trail Maintenance (Matthew Bell): There was one outing this past month in the Wild Iris Ridge area helping to construct new trail and remove scotch broom.

Highways and Byways By Bus (Sharon Cutsforth): The February Bus Trips Rally was attended by approximately 35 people. Trip sign-ups are off to a really good start and we look forward to a great year.

Summer Camp (John Jacobsen): Planning continues for Camp Robertson. The contract has been signed and camp fees paid for Camp Lamoille in the Ruby Mountains of Nevada. A caterer has been selected. Online signup for Sum-

mer Camp will begin March 15 for Obsidian members and March 22 for nonmembers. The Summer Camp Rally is scheduled for May 13

Publication (Lou Maenz): The bulletin committee mailed 423 copies of the *Bulletin* and included the directory in the necessary ones.

Entertainment (Judy Ness & Lana Lindstrom): 120 people attended the February potluck. Bill Sullivan presented the new edition of *Eastern Oregon Hikes*.

Membership (Laurie Funkhouser):

Six membership applications have been received for Board approval.

Publicity (Janet Jacobsen): We accepted an invitation from Chandra LeGue, Oregon Wild Western Field Coordinator, to participate in an Outdoors Celebration at Ninkasi Administration Building Thursday, April 28. We will share tables in the courtyard with other outdoor groups and authors from 6-7 PM. At 7, Bill Sullivan will emcee a free presentation by *Women in the Wild* author, Ruby McConnell.

Online (Wayne Deeter): There are now 6,774 photos in 481 albums in the Obsidian photo gallery.

Library/Historian (Lenore McManigal): All of the activities from the February bulletin have been recorded.

Lodge Building (Doug Nelson): There is a rental scheduled for a private party on Saturday, April 9.

Lodge Grounds (John Jacobsen): We had several work parties during the month, the last one on February 25 prior to the February Potluck. Had the first mowing of the year in addition to our normal ongoing cleanup operations. Thanks to Clara Emlen and Jim Whitfield. And a second special thanks to Clara for coming by the Lodge on her own and working on clearing the blackberries and cleaning out the area along the west side of our entry road.

Safety (Pat Esch): Lyndell Wilken and Pat Esch have inventoried and restocked the first aid kits from the Y, the store room and Climbs. Safety had their annual meeting in February. Among other things, we reviewed the Safety Manual and discussed having the First Aid Course in January 2017.

NEW BUSINESS

The Board approved Tom Rundle as a member of the Membership Committee.

The six candidates for membership were approved.

ANNOUNCEMENTS

Get Your Axe to Oakshire!! Oakshire Inspires for Obsidian climbers. Oakshire Public House, 207 Madison St, Eugene. Wed, March 16, 11 AM-10 PM.

Meeting adjourned for food at The Pub at Laurelwood Golf Course.

Trip Reports & Other Activities



Byways By Bus

The Bus Rally

February 21, 2016

Hosted by the Bus Committee

Photographer: Darko Sojak

THIS WAS A PLEASANT WAY to spend a Sunday afternoon. The Lodge was warm and refreshments were yummy as the Bus Committee presented the eight trips scheduled for 2016. It was nice to see so many familiar faces and to welcome several newcomers. Even though attendance numbers



were down a little from last year, enthusiasm was high and signups for all of the trips are really good. The Concessions Committee added to the fun by displaying all of their neat Obsidian merchandise. The Bus Trips schedule is posted on the website and there are hard copies available at the Lodge. There is currently space available on all trips.



Snowshoe Trips

Odell Overlook

January 23, 2016

Leader: Scott Hovis

Photographer: Dave Lodeesen

Snowshoe: 3.5 miles, 500 ft. (Moderate)

FOUR OBSIDIANS MET AT SEHS to carpool to Gold Lake Sno-Park early on a Saturday morning. It was 45 degrees in Eugene and raining when we left. The rain stayed with us until well past Oakridge, where we gained elevation and the rain turned to snow before we reached the sno-park.

At the start of the trail, the snow pack was 4 feet thick with a foot of fresh powder on top. We hiked a mile to the Westview warming shelter, where we adjusted our clothing by removing a layer because it was 30 degrees with no wind and actually felt warm. From there we hiked on to the Odell Lake Overlook, which offered very limited views because of the falling snow increasing in intensity. At the overlook, several hungry gray jays actually landed on us begging for food. We offered up a few crumbs. From there, we hiked up to the Diamond Peak Viewpoint, but again the views were obscured by falling snow. The snow was much heavier here with the base probably exceeding 6 feet. We judged that by looking at the blue diamonds, which were only 3 or 4 feet above the trail and knowing that they are really 10 feet or more above the ground. So we hiked back to the Westview



Warming Shelter to eat lunch. There was a nice warm fire burning in the wood stove as we ate our lunch and chatted with a Boy Scout group. As we got ready to head back to the sno-park, about 15 people in a group arrived at the warming shelter. We squeezed out and got back on the trail. On the final mile back to the parking lot, we came upon 25 or 30 other folks just starting out for the day. We were lucky that we got here early before the crowds descended upon the trails. A lesson learned here is to come early if you want to avoid crowds on the weekend. It probably isn't this busy during the week if you can get out here. Overall, we had a wonderful time with no mishaps. Members: May Fogg, Scott Hovis, David Lodeesen, Tom Rundle.

Odell Overlook

January 30, 2016

Leader: John Cooper

Photographer: Holger Krentz

Snowshoe: 3 miles, 300 ft. (Easy)

THE TEN SNOWSHOERS IN THREE FOUR-WHEEL DRIVE VEHICLES made it up the snowy pass to the Gold Lake parking lot, which was minimally plowed. We made a hasty departure to stay warm in the moderate snow fall that we had for most of our trip. First to the West View Shelter and then east through several intersections to the PCT and the Odell Overlook. Again we were hurried along by the snow and took a

short break. We still had plenty of time so we did the Diamond View Loop before backtracking to the shelter and the



car park. Some of us had lunch at the Ski Patrol cabin before heading back. No panoramic views to be had, but the woods were beautiful in drifts of new fallen powder. Members: John Cooper, May Fogg, Holger Krentz, Kathy Randall, Mike Smith, Darko Sojak. Nonmembers: Jane Bartell, Kathie Carpenter, Deborah Sinnott, Monica Ozwoeld.

Salt Creek Falls
February 6, 2016
Leader: Scott Hovis
Photographer: Darko Sojak
Snowshoe: 3.5 miles, 500 ft. (Moderate)

EARLY ON SATURDAY MORNING, 17 Obsidian trip participants left Eugene and carpooled to Salt Creek Falls, east of Oakridge to snowshoe a 3.5-mile loop with about 500 feet of



elevation gain. With the temperature at 45 degrees when we left Eugene, and a lot of rain the previous week, we weren't sure what the snow conditions would be like. We arrived at the sno-park to find the temperature had dropped only to 37 degrees there at the 4,100-foot level. We donned our snowshoes in slushy conditions and hiked the access road to the entrance of the trail. Our first view point was spectacular Salt Creek Falls, which is the second highest in Oregon at 286 feet. We took plenty of time to take in this awesome sight and posed for many pictures. We continued on the trail of firm crunchy snow and estimated the base at 3 - 4 feet thick. Crossing a couple of foot bridges, we had to take care

because the packed snow was nearly up to the top of the hand rails. We hiked to a rise that offered up an open view of the surrounding mountains, where we could see the upper runs at the Willamette Pass Ski Resort. On we hiked to the also spectacular Diamond Creek Falls. There, we kicked back for a while and ate our lunch while the falls provided the perfect backdrop. After lunch, we hiked the other loop trail back to the park entrance. All the Obsidians performed like pros and agreed that this was a fun snowshoe experience. Conditions were a bit warm and the sky overcast, but it was a trip not to be missed. Members: Keiko Bryan, Rebecca Eastwood, May Fogg, Scott Hovis, David Lodeesen, Lynn Meacham, Darian Morray, Kathy Randall, Tom Rundle, Mike Smith, Darko Sojak. Nonmembers: Kathie Carpenter, Kathy Sullivan, Deborah Sinnott, Monica Ozwoeld, Fran Calciano, Karen Morray.



Ski Trips

Berley Lakes
January 24, 2016
Leader: Randy Sinnott
Photographer: Darian Morray
Xski: 8 miles, 750 ft. (Difficult)

THE SANTIAM SNO-PARK WAS ALL BUT EMPTY when six of us set out for the ski-in to Berley Lakes. The only track visible soon tacked off toward Booth Lake leaving us no option but to strike off unassisted for one of Oregon's most elusive destinations. Even Bill Sullivan has gotten lost in this wintery *Bermuda Triangle* on the west flank of Three Fingered Jack. Visibility was about half a mile, so we had some periodic help using landmarks; but keeping even close to on course required frequent reference to GPS. Most of this ski trip is through an old burn and on clear days offers great views of Washington and later Jack. We were not so lucky. In the first quarter mile, I noted ice clumping on my



skis and thought it an unpropitious omen, but a single application of Maxiglide kept me ice free the rest of the trip. The final half mile of this ski is the crux. There is no quick and easy way into Lower Berley Lake. It's surrounded on three

sides by the butte in which it's nestled, possibly an old volcanic spatter cone. The *easy way in* is defended by a slope covered with stunted conifer growing in an expansive thicket, forcing the skier between tree wells and over tenuous snow bridges. I believe most trips fail not because the lakes are so well hidden, but rather because the last quarter mile demands such gymnastic exertion. It was snowing lightly when we turned back. It seemed a degree or two colder, which was good because it was above freezing when we started. The snow conditions were mostly good, enabling many good runs on the return. The trip, car to car, took about 5 hours. It was a good workout we all agreed. Members: Brian Hamilton, Becky Lipton, Darian Morray, Randy Sinnott, David Strutin. Nonmembers: Jorma Meriaho.

Booth Lake Loop

February 6, 2016

Leader: Brian Hamilton

Photographer: Jorma Meriaho

Xski: 7 miles, 1,580 ft. (Difficult)

THE MORNING'S FORECAST OF A CHANCE OF SNOW before 10:00 followed by a clear sky turned out to be inaccurate. Instead, there was a nearly continuous light mist and we never saw anything but a light gray sky. It was too warm for rain gear, so the mist tried its best to creep deep into our



layers of clothing. We left Santiam Sno-Park at 10:00 and reached the highest point of our ascent within two hours. The leader's GPS was malfunctioning so we resorted to group route-finding, using compass & map, another GPS, and references from memory. Getting ready to drop off the ridge, we were hoping to point out Booth Lake below as a rendezvous after the steep downhill run, but the fog was too thick to see more than a hundred yards. After negotiating a break in the snow cornice on the edge of the ridge, the more advanced skiers enjoyed beautiful Telemark turns and then waited for the slower skiers to catch up. Skiing through the B&B burn is wonderful! There is so much room to move from side-to-side down a slope and still be able to keep track of others in the group. After an 800-foot drop, we reached Booth Lake, turned south toward Square Lake, and the snow began to turn to wet mush. We skirted the west edge of Square Lake and then turned west and travelled parallel to the highway to return to the sno-park at about 3:30. Congratulations to Jorma Meriaho for completing his third Obsidians trip! Members: Brian Hamilton, John Hartman,

Gordon Sayre, Randy Sinnott, David Strutin, Harold Thompson. Nonmembers: Jorma Meriaho.



Hikes

Blanton Heights to Spencer Butte

January 16, 2016

Leader: Laurie Funkhouser

Hike: 9 miles, 1,900 ft. (Moderate)

UNDER GRAY CLOUDS, the crew started along the Ridge-line trail from the Blanton Heights trailhead with Janet Jacobsen noting the colorful doggie-do bags at the trailhead kiosk. Upon reaching the summit of the first section, we peeled a layer and headed onward. With a steady pace, we timely reached the junction to take the trail to the top of the Butte. High dark clouds threatening rain were noted at the top, but we still had clear sky views of the valley. Within a few minutes the chill set in prompting us to descend the trail to the tree cover. Upon reaching the Willamette Street kiosk, the thunder rolled and the drenching rain came for just a few minutes. When the rain lightened a hair, we dashed onto the final segment reaching our warm, cozy vehicles. Janet loaded the colorful bags for proper disposal - always setting an example! Members: Laurie Funkhouser, Betty Grant, Janet Jacobsen, John Jacobsen, Holger Krentz, David Lodeesen, Tom Rundle.

Amazon Headwaters/Spencer Butte

January 27 - February 17, 2016

Various Leaders: Mike Smith, Dave Lodeesen

Hike: 6.2 miles, 1,530 ft. (Moderate)

THE HIKERS BY DATE WERE: JANUARY 27—Mike Smith (leader) Members: Mari Baldwin, David Cooper, Janet Jacobsen, David Lodeesen, Carla Lyon, Marlene Malone, David Reinhard, Jorry Rolfe, Tom Rundle, Mike Smith. Nonmembers: Kathie Carpenter, Michael King, David Schroeder, Deanna Campbell, Vern Marsonette. **FEBRUARY 3**—Mike Smith (leader) Members: David Cooper, May Fogg, Janet Jacobsen, David Lodeesen, Marlene Malone, Darian Morray, David Reinhard, Jorry Rolfe, Tom Rundle, David Strutin, Fumiyo Tao. Nonmembers: Kathie Carpenter, David Schroeder, Jim Northrop, Steven Koester, Blue Wesley. **FEBRUARY 10**—David Lodeesen (leader) Members: Brad Bennett, Keiko Bryan, David Cooper, Hilary Fisher, Barbara Gunther, Janet Jacobsen, Lana Lindstrom, Marlene Malone, Caroline Moore, Jorry Rolfe, Tom Rundle, Art Skach, Mike Smith, Fumiyo Tao, Blue Wesley. Nonmembers: Marilyn Odell, Michael King, David Schroeder, Deanna Campbell. **FEBRUARY 17**—Mike Smith (leader) Members: David Cooper, Hilary Fisher, Janet Jacobsen, David Lodeesen, Marlene Malone, Caroline Moore, Darian Morray, Jorry Rolfe, Tom Rundle, Art Skach. Nonmembers: David Schroeder, Jim Northrop.

Cummins Creek Out and Back

January 23, 2016

Leader: Mike Smith

Hike: 11.6 miles, 1,700 ft. (Moderate)

THIS HIKE HAD BEEN CANCELLED TWICE BEFORE, and the chance of a little rain was not enough for me to cancel it a third time. Unfortunately, everybody else did, so I hiked by myself. For some time, I have wanted to transplant a small Sitka Spruce to the coast range, so the hike was a good excuse to plant it without having to make a special trip to the coast. It was not cold but it was foggy, and nobody was out there. Rain pants were a must for the wet vegetation. I reached the east end of the wilderness shortly after 11 and had a quick lunch. The return was uneventful except for meeting two people who asked me about the loop. I told them there was no loop. A glance at the man's jeans also had me comment that he needed rain bottoms or he was going to be very uncomfortable. They continued east, and I returned west, to the car. It rained the last half mile. It was a nice day to be out in the Cummins Creek Wilderness, and it remains one of my favorite places. Members: Mike Smith.

Blanton Heights to Spencer Butte

January 23, 2016

Leader: Laurie Funkhouser

Photographer: Darian Morray

Hike: 9 miles, 1,900 ft. (Moderate)

A PROMPT CREW SET OFF UNDER CLOUDY/GRAY SKIES and mild temperatures (about 50 degrees) to reach the summit of Spencer Butte. Several runners were out this morning. We



quickly arrived at Willamette Street to continue the hike on the next section of Ridgeline Trail. Again, primarily encountering runners until the last few yards where we were greeted by two ladies with three happy dogs. Upon climbing to the summit, we could not help but comment on the quality of the trail. The rock steps and defined trail are appreciated. Several younger hikers were leaving the summit as we arrived. A brisk cool wind kept our viewing time short—but the valley was cloudy with small holes of blue sky and dark, snowy-

looking clouds to the east. With a steady pace on the way back, we arrived at our cars with time to spare before the noon hour. Enjoyed the company of all on the trip. Members: Carla Cooper, David Cooper, Laurie Funkhouser, Janet Jacobsen, John Jacobsen, Darian Morray. Nonmembers: Karen Morray.

North Bank Deer Preserve

January 24, 2016

Leader & Photographer: Darko Sojak

Hike: 8 miles, 1,800 ft. (Moderate)

OUR FAST GROUP HAD A FUN HIKE IN THE LOW 40s, intermittently rainy and windy weather. According to Dave



Lodeesen this was the *Sound of Music* hike—the beautiful untamed hills in wild, rough country. Members: Janet Jacobsen, Daphne James, Holger Krentz, David Lodeesen, Kathy Randall, Jorry Rolfe, Tom Rundle, Darko Sojak. Nonmembers: Vern Marsonette.

Full Ridgeline Out/Back

January 31, 2016

Leader: David Cooper

Photographer: Dave Lodeesen

Hike: 12.6 miles, 2,120 ft. (Difficult)

THE FORECAST WAS FOR CLOUDY SKIES, but we had plenty of sun. It was a perfect day for a winter hike. Our group of fast-paced hikers covered the 12.6 miles in 5 hours with plenty of time for short stops at trailheads and lunch in the sun on Mt Baldy. Members: Carla Cooper, David Cooper,



Laurie Funkhouser, Betty Grant, Janet Jacobsen, Ann Kloos, David Lodeesen, Jorry Rolfe, Chris Stockdale, Elle Weaver. Nonmembers: Steve Adey.

Groundhog Day Hike

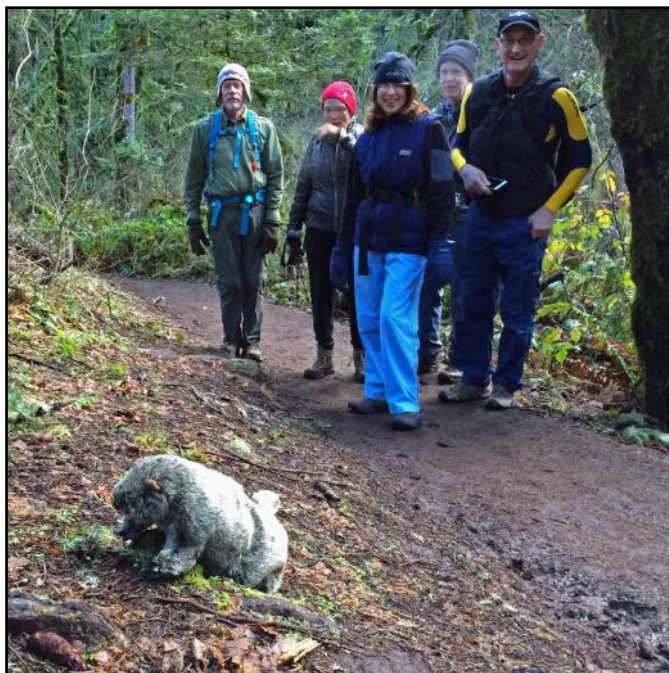
February 2, 2016

Leader: Janet Jacobsen

Photographer: Dave Lodeesen

Hike: 4 miles, 300 ft. (Easy)

MIKE SMITH, OUR CLEVER HORNSWOGGLER, was the first to spot the groundhog basking in the sun. He pointed and gave a silent sign to the next hiker, Dave Lodeesen as he came



around the bend. Dave couldn't believe his eyes. A real groundhog! Since it was the day after the Iowa Caucus, he thought I said *cornswoggled*. For more details about the humorous sighting, you will need to talk with someone on the hike. After our loop hike to Baldy (2½ hours), we visited the Raptor Center. It was the first visit for several. One hiker asked about celebrating National Skunk Day. It is June 14, but I will won't be leading a *smellabrate* hike. Members: Janet Jacobsen, Sandra Larsen, David Lodeesen, Marlene Malone, Tom Rundle, Janice Smith, Mike Smith. Nonmembers: Vern Marsonette.

River/Campus Loop

February 7, 2016

Leader: Janet Jacobsen

Hike: 7 miles, 0 ft. (Moderate)

PARKING IS FREE ON SUNDAY and at 8:30 AM, we had no problem finding parking places near the Knight Library, where our Shakespeare theme walk began. Our first challenge was to locate the Shakespeare head in the North frieze on the front of the Library. After our two-hour river loop hike, we stopped at the Erb Memorial Union for a snack and coffee in the Fish Bowl. We then joined the crowd at the Museum of Art taking advantage of free admission for the last day of the exhibit: *First Folio! The Book that Gave Us*

Shakespeare. Then it was lunch at the Museum Café. Members: Keiko Bryan, May Fogg, Barbara Gunther, Jane Hackett, Janet Jacobsen, Holger Krentz, David Lodeesen. Nonmembers: Alice Krentz.

Oregon's Birthday Hike

February 14, 2016

Leader: Janet Jacobsen

Photographer: Darko Sojak

Hike: 8 miles, 300 ft. (Easy)

SIXTEEN OF US BEGAN OREGON'S BIRTHDAY CELEBRATION with snacks: the state nut (filbert) and state fruit (pear). Everyone was asked to bring an Oregon trivia fact to share. That information evolved into much laughter. As we left Dorris Ranch, we viewed six deer and a flock of turkeys. They didn't count since we were looking for the state animal (beaver). At our first stop, Willamette Heights Park, we found a sad beaver on a worn out totem pool. With technical help from Mike Smith, we actually heard the state bird (meadowlark). We then walked down through Cemetery Park to Main Street to view the Homer Simpson mural where another beaver in a better condition grinned back at us. The Oregon Flag on top of the Springfield Museum hovered over us in the parking lot while we identified the 43 subjects in the Oregon Trail Mural. The nutria in the canal was not on our list! Back at Dorris Ranch, we discovered the state fish (salmon) painted on one of the buildings. Ten of us continued our walk on the Middle Fork Trail before we went for lunch at Plank Town where we drank water, not the state beverage (milk). We took time to plan the next Obsidian hike with a theme. Members: Carla Cooper, David Cooper,



May Fogg, Jane Hackett, Janet Jacobsen, Ellen Johnson, Steven Johnson, Ann Kloos, David Lodeesen, Kathy Randall, Ruth Romoser, Tom Rundle, Mike Smith, Darko Sojak, Nancy Whitfield. Nonmembers: Deborah Sinnott.

Dorris Ranch/Clearwater Park

February 15, 2016

Leader: Ruth Romoser

Photographer: David Lodeesen

Hike: 8 miles, 0 ft. (Easy)

MONDAY WAS A PERFECT DAY for the Dorris Ranch to Clearwater Park hike! It did not rain and there were sun breaks, along with great views of the river. After the hike,



some of the group had lunch at Plank Town. Members: David Lodeesen, Vern Marsonette, Evelyn Nagy, Jorry Rolfe, Ruth Romoser, Karla Rusow, Susan Sanazaro. Nonmembers: Steve Adey.

Mt. Pisgah
February 16, 2016
Leader: Evelyn Nagy
Hike: 2.8 miles, 1,000 ft. (Moderate)

WHAT FUN FOR A SMALL GROUP OF PEOPLE with different hiking levels. We lucked out with no rain and little mud on the trail. View always awesome on Pisgah and much appreciated. Spring is in the air! Members: Carla Cooper, David Cooper, David Lodeesen, Vern Marsonette, Evelyn Nagy, Ruth Romoser.




Trail Maintenance

Amazon Planting
January 30, 2016
Leader: Matthew Bell
Photographer: Pat Soussan (Picture below)
Trail Maintenance: 0.5 miles, 1 ft. (Moderate)

FOR THIS MONTH'S OUTING we returned to the Martin Street Trailhead of the Amazon Headwaters Trail for our third planting project in our continuing attempt to revegetate it. We worked with EPOS' Dev Cochrane to plant about 30 plants including maple trees, ocean spray, Oregon grape, etc. After completing the planting portion in about 10 minutes, we worked to place wood chips around all the newly planted plants as well as the surviving plants from previous plantings. Our volunteers forked into wheelbarrows, pushed wheelbarrows, and spread about 25 yards of wood chips over the remaining nearly 3 hours. Todd and Dev worked to place wire cages around the newly planted plants to protect them from the ravages of hungry deer. As we worked we were passed by a surprising number of familiar faces which included current and former City staff and Obsidians. Members: Matthew Bell, Keiko Bryan, David Cooper, Clara Emlen, Dan Gilmore, Mark Hougardy, Janet Jacobsen, Todd Larsen, David Lodeesen, Pat Soussan, David Strutin.



Upcoming



Nearby Nature Spring New Volunteer Orientation

WANT TO HELP CONNECT KIDS AND NATURE NEARBY? Learn all about leading school nature walks in Alton Baker Park, as well as other Nearby Nature volunteer opportunities (from gardening to restoration work to special events) on Wed., March 9, from 6:30 - 8 PM in the Tykeson Room at the Eugene Public Library. No experience needed—training provided in April. Questions? Call Nearby Nature at 687-9699, email info@nearbynature.org or see www.nearbynature.org/volunteer.

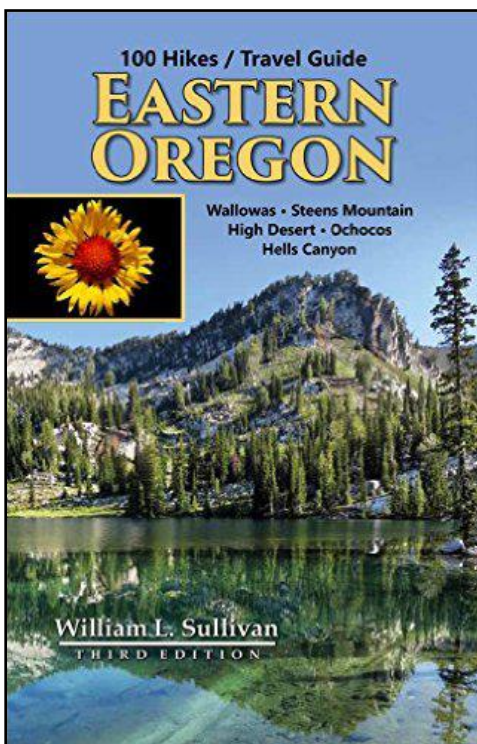
100 Hikes / Travel Guide: Central Oregon Cascades William Sullivan, Fourth Edition, 2015-2016

Janet Jacobsen

IT WAS DEFINITELY TIME TO REPLACE MY WELL USED 2013 COPY with the new *100 Hikes/Travel Guide: Central Oregon Cascades*, packed with pages of color photos. I opted for the printed version instead of the advantages and convenience of the iPad, iPhone, or Kindle! The colorful Travel Guide includes a new section—A Visit to the Bend Area—followed by information about Eugene, Salem, Hot Springs, Winter Sports and Wildflowers. The history, culture, museums, breweries and new hikes in the Bend area beckon one to organize an extended trip for next spring. The Chemekatans, an outdoor club in Salem, had their summer outing in the Bend area last summer. Who wouldn't want to explore Bend's South Canyon, Lava Cast Forest and Cave, Badlands, Whychus Creek and Canyon?

The new edition includes the latest trail updates. Fortunately Sullivan has made it easy for readers/hikers to find trail updates for past editions on his website at www.oregonhiking.com/oregon-adventures/trail-updates. Be sure to scroll down to the edition you need.

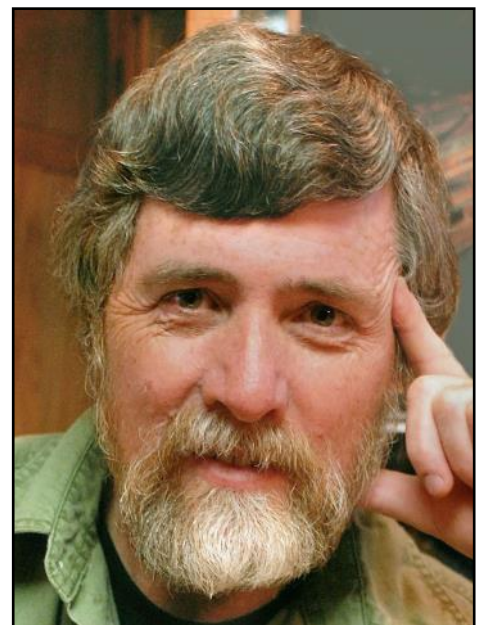
More New Sullivan Books



Judy Ness, Entertainment Chair, estimates that 120 people attended the February potluck to hear Bill Sullivan's program *New Hikes in Eastern Oregon*. That included two young men from Corvallis who read about the event on Sullivan's website. It was standing room only by the time they found the lodge. The third edition of *100 Hikes/Travel Guide: Eastern Oregon* released March 31, 2015 includes the (dozen) new hikes featured in his slide show.

Sullivan's new book—*100 Hikes: Oregon Coast and Coast Range*—is due out later this month.

To see his calendar of upcoming slideshows check out his website www.oregonhiking.com. The first one in Eugene is scheduled April 19 at REI.



Ad Hoc Art Heritage Committee: Final Report and Updates

Jim Duncan, Committee Chair

THIS COMMITTEE WAS APPROVED BY THE BOARD at the March 2015 meeting in response to the \$500 bequest to the Obsidians from the estate of former president Ray Cavagnaro, and a matching \$500 donation from the Scherer family. Committee members included Janet Jacobsen, John Jacobsen, Sharon Duncan, Rick Ahrens, Peter Graham, Doug Nelson, and Jim Duncan (chair).

Over the summer we purchased and installed a picture hanging system in the Scherer Room, which allows our permanent collection of paintings to be hung on the west wall, and rotating exhibits of paintings and photographs by various members of the Obsidians on the south wall. The first exhibit last fall featured the artwork of Scott Hovis.

The Scherer Room has a new photography exhibit featuring photos by Carla Cooper, Holger Krentz, Kathy Randall, and Darko Sojak. The new library bookshelf, now holds a small collection of outdoor books for members to borrow on the honor system. You are welcome to contribute a book that is current and in good condition. This is not a permanent collection—some books eventually will be donated to the Friends of Eugene Public Library. Take time to visit the Scherer Room and view the photos at the March Potluck. If you have questions or would like to display your photos/art, contact Jan Jacobsen at bjjacobsen@comcast.net

A Ray Cavagnaro memorial bookcase was handmade by Wes Prouty, also a former president, and was placed in the Scherer Room. The small brass plaque on the bookcase reads *In Memory of Ray Cavagnaro, Obsidians President 1950*. A 3-ring binder containing photographs and information about Ray Cavagnaro and the Scherer family will be placed in the bookcase.

We also had an additional plaque made to recognize the enormous woodworking contributions to the Obsidians, made over many years, by Wes Prouty. That plaque reads *In Recognition of Wes Prouty for his Woodworking Contributions to the Obsidians* and was hung in the main hall of the lodge.

To enhance the Bryan Ryan painting in the main hall, a collage of photographs with a brief biographical sketch and separately, Ryan's climbing log, were both framed and hung below the painting on the fireplace wall of the lodge.

Finally, to recognize the Catherine Jones bequest to the Obsidians, which paid for the new storage building, we had a cast bronze plaque made which is hanging next to the door of the building. It reads *The Obsidians Storage Building – Built November 2013 Thanks to a Generous Gift from Catherine Jones*. The cost of this plaque was paid for from the Contingency Fund.

In addition, Janet and John Jacobsen, and Sharon and Jim Duncan have agreed to help with the hanging and placement of future art exhibits in the lodge.



Special Thanks to Wes Prouty

DO YOU KNOW WHO BUILT THE OBSIDIAN LODGE DINING TABLES, THE FIREPLACE MANTLE, THE STORAGE VAULT, THE BOARDROOM CABINETS, THE TWENTY-SIX HERITAGE JUNIPER PICTURE FRAMES, THE BOOKCASES, AND THE MAGAZINE STAND? At summer camp, have you assembled tables, or studied the information board, or watched the president receive a special name board? The incredibly skilled cabinet maker is Wes Prouty who, since he joined in 1970, has given his time and energy to not only contribute his woodworking skills but also to lead 86 of his 304 trips. In 1969 he backpacked in eight miles for his first summer camp at



Lower Caribou Lake in the Trinity Alps. He was climbs chair, summer camp chair, president in 1973, and in 2002 was awarded Honorary Membership. Long overdue, there is now a plaque on the east wall of the main hall to show our appreciation. Wes, now eighty-five years old, lives in eastern Oregon. In 2013 he made the large frame for the restored Ryan painting and then brought it to the lodge to help with the installation. When he left to make the long drive back home, he said he was happy to make the frame—it was time for him to make a contribution to the club. Thank you, Wes.

Art Heritage Ad Hoc Committee

Opinion:

Clearcutting Planned for Mt. June / Hardesty Mountain Roadless Area

David Adkins

A CLEAR-CUT IS PLANNED IN THE HARDESTY MOUNTAIN ROADLESS AREA. The timber sale *John's Last Stand* would take place on BLM land next to the Mt. June trail and ½ mile from Mt. June itself. The precise location is northwest of where the Sawtooth trail intersects with the Mt. June trail.

This is a popular area for hikers as well as mountain bikers to enjoy the gem of a relatively wild area in Eugene's own backyard. There are Obsidian hikes in this area on a yearly basis. In fact, the author's first Obsidian hike was to the top of Mt. June via the upper section of the Eagle's Rest trail on June 15, 1974. This area is valued by many for its easy access from the Willamette Valley, with an opportunity for a quiet walk through the forest to the top of Mt. June with its 360-degree panoramic view. The *John's Last Stand* clear-cut would surely compromise this experience.

Oregon Wild, Cascadia Wildlands and Many Rivers Group Sierra Club have filed a 76-page protest with the BLM. I urge all Obsidians who care about preserving the Mt. June/Hardesty Mountain Roadless Area to join them by contacting their representatives.

Cascadia Wildlands has an online form to "call upon our political leaders to prevent this reckless logging scheme from proceeding." I can be contacted at dv_adkins@hotmail.com for more information or the exact website address to submit the comment with your representatives.

Wednesday And Saturday Morning Hikes

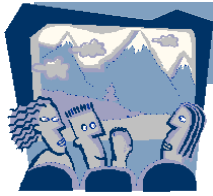
Janet Jacobsen

THE WEDNESDAY MORNING AMAZON HEADWATERS/ SPENCER BUTTE CONDITIONING HIKE celebrated its third anniversary February 24. I led the first one on February 27, 2013, when a new member asked if we could have more hikes during the week so that she could train for a 500-mile walk in Spain. Since then I estimate that there have been 137 hikes and 35 nonmembers who have used the hikes to join our club. In the last several months, hikers have stepped up to take turns leading, some for their first lead. Laurie Funkhouser has just started regular Saturday nine mile hikes from Blanton Heights to Spencer Butte. The rewards are many for these weekly hikes—it's aerobic, cuts down on greenhouse gas emissions, prepares one for those long hikes in the mountains and builds friendships. Join us.

Soon-to-be member David Schroeder on Spencer Butte.
Photo by David Lodeesen on February 17.



At The Lodge



POTLUCK

Friday March 25 at 6:30 PM

Bucket List: Kilimanjaro, Zanzibar and the Serengeti
Peter Baxter—African adventure guide, author and historian

HAVE YOU DREAMED OF STANDING AT THE PEAK OF ONE OF THE SEVEN SUMMITS? Or experiencing one of earth's last and largest natural areas teeming with wildlife? Stepping back in time to the origins of mankind in Olduvai Gorge? Diving into the crystalline waters of the Indian Ocean along the ancient Spice Routes?

Your bucket list is about to get real!

At the March potluck with Peter Baxter you'll learn how to prepare and train to wind your way through four distinct habitats to reach the fabled 19,341-foot Uhuru Peak. You'll follow that high point by exploring the cultural richness, natural history and wildlife of the Serengeti plains, and wrap up this once-in-a-lifetime experience on the beaches of exotic Zanzibar.

Peter will share insights and inspiration from his long career guiding hikers, history buffs and nature lovers in this fascinating and quickly changing part of the world.

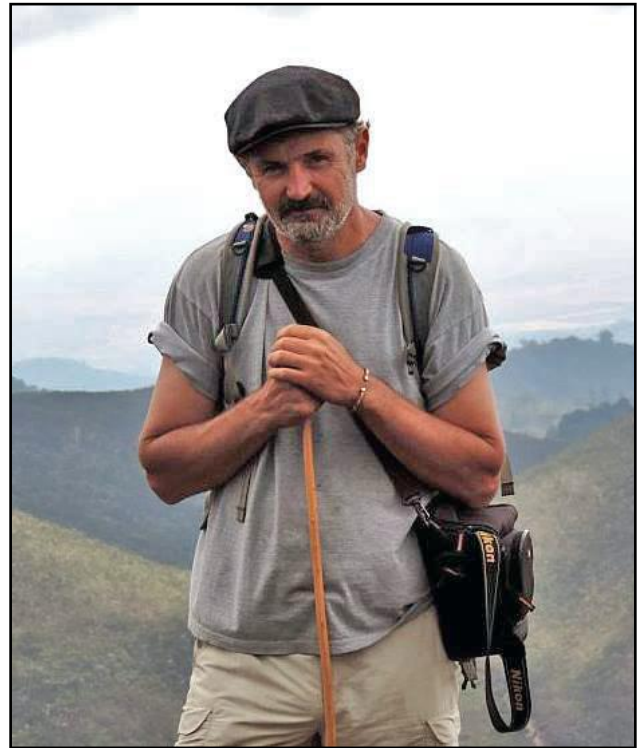
March Potluck

Friday, March 25, 2016

Social hour 6 PM, Potluck 6:30 PM, Program 7:30 PM

Obsidian Lodge

Bring your favorite potluck dish to share... along with plates, utensils and cups... plus \$1 to help cover club expenses.



Tuesday March 15, 2016 at 7 PM



ExploraTalk

Adventuring in the Brooks Range
Mountains and Rivers

JOIN RIVER GUIDES AND OUTDOOR ENTHUSIASTS Jason Rice and Tim Thoren on Tuesday, March 15 at the Obsidian Lodge for a slideshow and talk about the Brooks Range in Alaska. This vast area, above the Arctic Circle, is one of the most remote, wild, and undisturbed places in the United States. You will be fascinated with their stories and photos of the wildlife, rivers, and mountains of this unique area of the world.



Obsidian Calendar

March

7 Mon Tait's Loop Snowshoe D Wilken.....	343-3080
9 Wed Spencer Butte Hike M Cooper	868-5427
12 Sat Blanton/Spencer Butte Hike M Funkhouser	206-2303
13 Sun Arrowhead Lake Xski D Cooper	344-8517
13 Sun Maxwell Butte Back Pack Snowshoe D Hovis....	731-3412
14 Mon Pi Hike Hike E Jacobsen	206-1251
15 Tue Adventuring in the Brooks Range	ExploraTalk
16 Wed Spencer Butte Hike M Lindstrom.....	683-1409
19 Sat Marys Peak from Conner's Camp Hike M Smith.....	357-5208
19 Sat Blanton/Spencer Butte Hike M Funkhouser	206-2303
20 Sun Mt. Pisgah/Spring Equinox Hike M Jacobsen	206-1251
21 Mon Portland Exploration Ext Trip M Lindstrom	683-1409
22 Tue Champoeg: Oregon, USA Beginning Bus West ..	343-5492
22 Tue Mt. Pisgah under the Full Moon Hike M Smith..	357-5208
23 Wed Spencer Butte Hike M Lodeesen.....	214-709-0352
25 Fri Peter Baxter: African Adventure	Potluck
26 Sat Beach Clean Up with SOLVE Hike E Sojak	525-1124
26 Sat Spencer Butte Trail Mnt M Bell	503-884-8829
27 Sun Castle Rock Hike D Smith.....	357-5208
28 Mon 2016 Climb School Climb Reiter	521-8472
30 Wed Spencer Butte Hike M Smith.....	357-5208

April

2 Sat Blanton/Spencer Butte Hike M Funkhouser	206-2303
3 Sun Kentucky Falls Hike M Jacobsen	206-1251
6 Wed Spencer Butte Hike M Malone	503-488-0825
9 Sat Short Mountain Landfill Hike E Hougardy	505-7031
9 Sat Blanton/Spencer Butte Hike M Funkhouser	206-2303
10 Sun North Bank Deer Preserve Hike M Jacobsen.....	914-1132
12 Tue A Day at Wildlife Safari Bus Phelps	726-0118
12 Tue Wetlands Bike & Birding Bike E ..Montgomery	688-7025
13 Wed Spencer Butte Hike M Cooper	868-5427
16 Sat Rooster Rock Hike D Smith	357-5208
16 Sat Blanton/Spencer Butte Hike M Funkhouser	206-2303
17 Sun Yachats to Walport Hike M Sojak.....	525-1124
20 Wed Spencer Butte Hike M Lodeesen.....	214-709-0352
21 Thu Mt. Pisgah under the Full Moon Hike M Smith ..	357-5208
22 Fri Roadside Geology of Oregon	Potluck
23 Sat Blanton/Spencer Butte Hike M Funkhouser	206-2303
24 Sun Harlesty Mountain Hike D Smith	357-5208
27 Wed Spencer Butte Hike M Smith.....	357-5208
30 Sat Spencer Butte Trail Mnt M Bell	503-884-8829
30 Sat Backpacking Rendezvous at Lodge Hougar dy..	505-7031
30 Sat Blanton/Spencer Butte Hike M Funkhouser	206-2303

May

1 Sun Yachats Hike M Jacobsen.....	206-1251
4 Wed Hiking the Columbia Gorge Ext Trip Martz.....	345-6229
4 Wed Spencer Butte Hike M Jacobsen.....	206-1251
11 Wed Spencer Butte Hike M Rolfe	206-9501
15 Sun Owyhee Rafting Trip Ext Trip Schechter	687-1887
18 Wed Spencer Butte Hike M Cooper	868-5427
19 Thu New Coastal Museum & Aquarium Bus West ...	343-5492
20 Fri Alpenstocks to Ice Axes	Potluck
22 Sun Horse Rock Hike E Sojak	525-1124
25 Wed Spencer Butte Trail Mnt M Bell	503-884-8829
25 Wed Spencer Butte Hike M Smith.....	357-5208
28 Sat Dog Mountain Hike D Pierce	206-902-7326

June

3 Fri Smith Rock Ext Trip D Sojak	525-1124
4 Sat National Trails Day Trail Mnt M Bell	503-884-8829
5 Sun Crescent Mountain Hike D Smith.....	357-5208
7 Tue Birding at Summer Lake Bus Cutsforth.....	746-4929
20 Mon Mt. Pisgah Solstice Hike M Jacobsen.....	206-1251
24 Fri TBD	Potluck
26 Sun Dome Rock & Tumble Lake Hike M Randall	844-5916
29 Wed Spencer Butte Trail Mnt M Bell	503-884-8829

July

9 Sat Crater Lake Hiking/Camp CarCamp Hougardy.....	505-7031
14 Thu More Food V Bus West.....	343-5492
16 Sat Hwy. to Hwy. Hike D Cooper	868-5427
17 Sun Browder Ridge Hike M Randall	844-5916
19 Tue Mt. Pisgah Full Moon Hike M Smith	357-5208

August

19 Fri Duffy Lake Back Pack M Randall.....	844-5916
31 Wed Spencer Butte Trail Mnt M Bell.....	503-884-8829

September

11 Sun Charlton Lake & beach clean up Hike E Sojak...	525-1124
11 Sun An Oregon Coast Excursion Bus Beard.....	994-2337
23 Fri Bugs, Birds & Butterflies of S Texas	Potluck
24 Sat Natl. Public Lands Day Trail Mnt M Bell.....	503-884-8829

For Sale

72-inch ELAN Gateway Cap Skis with bindings

Contact: Darko Sojak

darchey@comcast.net or 525-1124

Save the Date

Orientation for Summer Leaders
Wednesday, April 20, 6:30 - 8:00 PM
At the Lodge

Save the Date

Backpacking Rendezvous
Saturday, April 30, 3:00–5:00 PM
At the Lodge

NEEED PRACTICAL IDEAS about lightweight backpacking while staying well fed, safe, and comfortable?

Join us on Saturday, April 30 at the Obsidian Lodge for a *Backpacking Rendezvous*—a gathering by backpackers for backpackers to help you do more with less. Bring your questions, tips, and suggestions.

The public is welcome to attend. If you have questions or would like to help, contact Mark Hougardy at mark@letsgoexploring.com.



OBSIDIANS, INC.
P.O. BOX 51510
EUGENE, OR 97405

OBSIDIANS, INC. IS A NON-PROFIT ORGANIZATION

RETURN SERVICE REQUESTED

PRESORTED STANDARD
US POSTAGE
PAID
EUGENE, OR
PERMIT 803



March 2016



Springfield Mural (See trip report on page 9) Photo by Darko Sojak

SUMMER CAMP 2016 REGISTRATION FORM

Camp Robertson - Ruby Mountains Saturday, July 30 – Friday, August 5, 2016

*Each camper must signup online at www.obsidians.org and complete/mail this registration form.
Please read the information and directions on the reverse side!*

Are you? Obsidian Member Nonmember

Name: _____ Phone: _____

Address: _____ Email: _____

City, State, Zip _____ Age, if under 18: _____

Camp Fees

Members:	Adults and children ages 12 and above	\$230 (Hardship cases: subtract \$50 – members only)
	Children ages 5-11	\$180
	Children under 5	Free
Non-members:	Adults and children 5 and older	\$270
	Children under 5	Free

Full payment must be included for **each** registration. The cancellation policy is on the reverse side.
Within 5 days of registering online, mail a check payable to **Obsidians Inc** to:

Obsidian Summer Camp Registration
PO Box 51510
Eugene, OR 97405

Is this your first Summer Camp? Yes No

Please indicate your dietary preferences: No restrictions Fish & chicken only; no red meat Vegetarian
Note: **No accommodation can be made for other dietary needs such as gluten or dairy intolerant.**

Do you plan to stay in a: Tent A-frame Vehicle/RV

Nine wood A-frames are unfurnished with bare wood floors. They can accommodate up to 4 people each – first come, first served. If you plan on an A-frame it might be wise to have a backup tent, just in case the A-frames are all taken.

If you plan to camp in an RV, van or trailer, what type of vehicle is it? **Type** _____ **Length** _____ ft.

Note: Carpooling to Camp is encouraged. When you sign up online, please indicate whether or not you want riders or need a ride. Individuals are responsible for making their own arrangements.

RECOGNITION OF RISK AND RELEASE OF LIABILITY

I, THE UNDERSIGNED, am aware that outdoor activities can be dangerous and present occasional hazards not encountered in everyday life. I am prepared to deal with and accept all risks of this activity and associated activities as my own responsibility. I am responsible for providing my own equipment, including first aid supplies and medicines. In consideration of OBSIDIANS, INC. sponsoring and granting permission for me to participate in this activity, I release OBSIDIANS, INC., its officers, agents and members from all claims on account of my death or injury resulting from any act, or failure to act, even if negligent, during my participation in this activity, including travel to and from the activity, and any associated activities.

By your signature below, you certify that you have read and understand all the conditions listed above and on the reverse side.

Signature: _____ Date: _____

For minor under 18, parent or guardian must sign instead.

SUMMER CAMP 2016 - REGISTRATION INFORMATION

(Complete the front side of this registration form.)

Signup/Registration/Payment: Registration is a two-step process:

- 1) Signup **online** at www.obsidians.org (click 'Online System Access' - bottom right corner of web page). Online signup for summer camp will be available on Tuesday, March 15 about 7:00AM. Obsidian members have priority for signing up for one week before nonmembers. Nonmembers may sign up starting March 22.
- 2) Complete the front side of this form, **one form per person**. **Within 5 days** of signing up online, mail the form along with the full amount due. You may submit one check for multiple registrations (double check your addition) in the same envelope. Make the check payable to **Obsidians Inc** and send to:

<p style="text-align: center;">Obsidian Summer Camp Registration PO Box 51510 Eugene, OR 97405</p>

Waiting List: Camp Robertson is limited to 85 persons. The names over 85 will have a *Wait List* status on the online signup sheet. If you are on the Waiting List, do not mail a registration form or check until your status changes to *Signed Up*; please monitor the website periodically to check your status.

Cancellation Policy: The Summer Camp Committee recognizes that sometimes cancellations are unavoidable; however, due to fixed costs, and in fairness to those who may be on the Waiting List, the policy is as follows:

- ▶ \$35 of total camp fee is nonrefundable for all cancellations.
- ▶ Registrants who cancel online by May 31 will receive a full refund, less the \$35.
- ▶ Registrants who cancel online on or after June 1, but before July 1: if your vacancy is filled, the full fee, less the \$35, will be refunded after camp. If your vacancy is not filled, no refund will be made until after all camp expenses have been paid in full. At that time, funds permitting, a percentage of your fee will be refunded.
- ▶ Registrants who cancel online on or after July 1 will not receive a refund.

Summer Camp Rally: The rally will be held **Friday, May 13, 7:00 PM** at the Obsidian Lodge. This **is not** a potluck. We'll discuss camp logistics and show slides of the camp, the area, and recreational opportunities.

Booklets: A Camp booklet containing detailed information regarding the campsite, the area, what to do, what to bring, etc. will be provided to registrants who have paid in full at the May 13 Rally. Those on the Waiting List will not receive a booklet at this time.

Camp Check-in: Campers are welcome to arrive after 3:00 pm on Saturday, July 30 – please do not arrive earlier. All food will be provided beginning with dinner the first night and ending with breakfast on the last day.

Questions: Camp Treasurer – Don Doerr
Camp Boss – John Jacobsen

541-954-8064
541-914-1132

donrdoerr@comcast.net
johnwjacobsen@comcast.net